



Chipsmall Limited consists of a professional team with an average of over 10 year of expertise in the distribution of electronic components. Based in Hongkong, we have already established firm and mutual-benefit business relationships with customers from,Europe,America and south Asia,supplying obsolete and hard-to-find components to meet their specific needs.

With the principle of "Quality Parts,Customers Priority,Honest Operation,and Considerate Service",our business mainly focus on the distribution of electronic components. Line cards we deal with include Microchip,ALPS,ROHM,Xilinx,Pulse,ON,Everlight and Freescale. Main products comprise IC,Modules,Potentiometer,IC Socket,Relay,Connector.Our parts cover such applications as commercial,industrial, and automotives areas.

We are looking forward to setting up business relationship with you and hope to provide you with the best service and solution. Let us make a better world for our industry!



Contact us

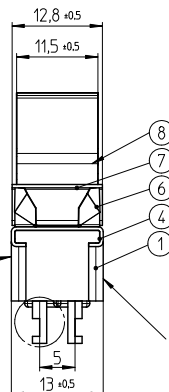
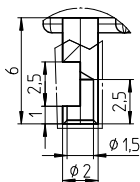
Tel: +86-755-8981 8866 Fax: +86-755-8427 6832

Email & Skype: info@chipsmall.com Web: www.chipsmall.com

Address: A1208, Overseas Decoration Building, #122 Zhenhua RD., Futian, Shenzhen, China



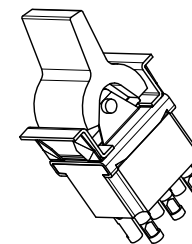
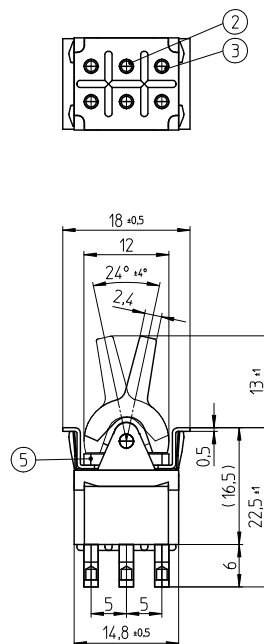
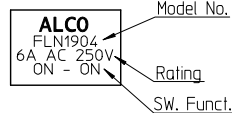
Detail A
Scale 5:1



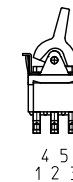
Detail A

Date Code Printing
last digit of year
A-L = January to December
Day

Printing of
Logo and Rating

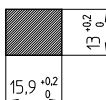


Function Chart



TE PN	Button	Part	Terminals 1 and 2 4 and 5	Terminals 2 and 3 5 and 6
2-6437630-6	white	FLN1904	ON	ON
3-6437630-7	black	FLN1904	ON	ON
2-6437630-7	red	FLN1904	ON	ON

Panel Cutout
thickness 1 to 2.5mm



Specifications

TE PN	Part	Rating	Initial Contact Resistance	Insulation Resistance	Dielectric Strength	Endurance
2-6437630-6 3-6437630-7 2-6437630-7	FLN1904	AC 125V 6A AC 250V 6A	MAX 10 milliohms at DC 2 ~ 4V 1A	MIN 1000 M Ohms at DC 500V	AC 1kV/1min (AC 1.2kV/1sec)	electrically 50,000 cycles at 20 cycles/minute (rated load resistive) mechanically 100,000 cycles at 20 cycles/minute

Materials Chart

Part No.	Part Name	Material/Surface	Optional Description
1	Case	Polyester Resin	Black
2	Common	C3602BD	Ep-Cu/Ni 3,Au F b
3	Fixed contact	C3602BD+Ag	Ep-Cu/Ni 3,Au F b
4	Frame	SUS	
5	Mounting Sleeve	C3602BD	Ep-Cu/Ni 3 b
6	Leaf spring	SUS	
7	Plate	SUS	
8	Button	Nyron Resin	

PART NO:		PART NAME:		MATERIAL/SURFACE:		OPTIONAL DESCRIPTION:	
PART LIST							
TOLERANCES UNLESS OTHERWISE SPECIFIED ACCORDING TO ISO 8015 and ISO 2768-1							
DIMENSIONS: mm							
Test dimen. / Prüfmaß: □; auxiliary dimen. / Hilfsmaß: (); theor. dimen. / theor. Maß: □; production control dimen. / Fertigungsmaß: [] ; dimen. for measure. technology / messtechn. rel. Maß: [] ;							
DRAWER		D&E		DATE		DRAWING NO.	
CHECKED		04.01.2007		SA008712		1968521	
APPROVED						Customer Drawing	
ECR-NO:		DATE		NAME		INFO	
SCALE:		NAME:		DWG NO:		OPTIONAL NO:	
REPLACEMENT FOR:		DWG LOC NO: IF		SHEET: 1 OF 1		REVISION: A A 2	

THIS INFORMATION IS CONFIDENTIAL AND PROPRIETARY TO TYCO ELECTRONICS AUSTRIA GMBH AND ITS WORLDWIDE SUBSIDIARIES AND AFFILIATES. IT MAY NOT BE DISCLOSED TO ANYONE OTHER THAN TYCO ELECTRONICS PERSONNEL, WITHOUT WRITTEN AUTHORIZATION FROM TYCO ELECTRONICS AUSTRIA.