



Chipsmall Limited consists of a professional team with an average of over 10 year of expertise in the distribution of electronic components. Based in Hongkong, we have already established firm and mutual-benefit business relationships with customers from,Europe,America and south Asia,supplying obsolete and hard-to-find components to meet their specific needs.

With the principle of "Quality Parts,Customers Priority,Honest Operation,and Considerate Service",our business mainly focus on the distribution of electronic components. Line cards we deal with include Microchip,ALPS,ROHM,Xilinx,Pulse,ON,Everlight and Freescale. Main products comprise IC,Modules,Potentiometer,IC Socket,Relay,Connector.Our parts cover such applications as commercial,industrial, and automotives areas.

We are looking forward to setting up business relationship with you and hope to provide you with the best service and solution. Let us make a better world for our industry!



## Contact us

Tel: +86-755-8981 8866 Fax: +86-755-8427 6832

Email & Skype: info@chipsmall.com Web: www.chipsmall.com

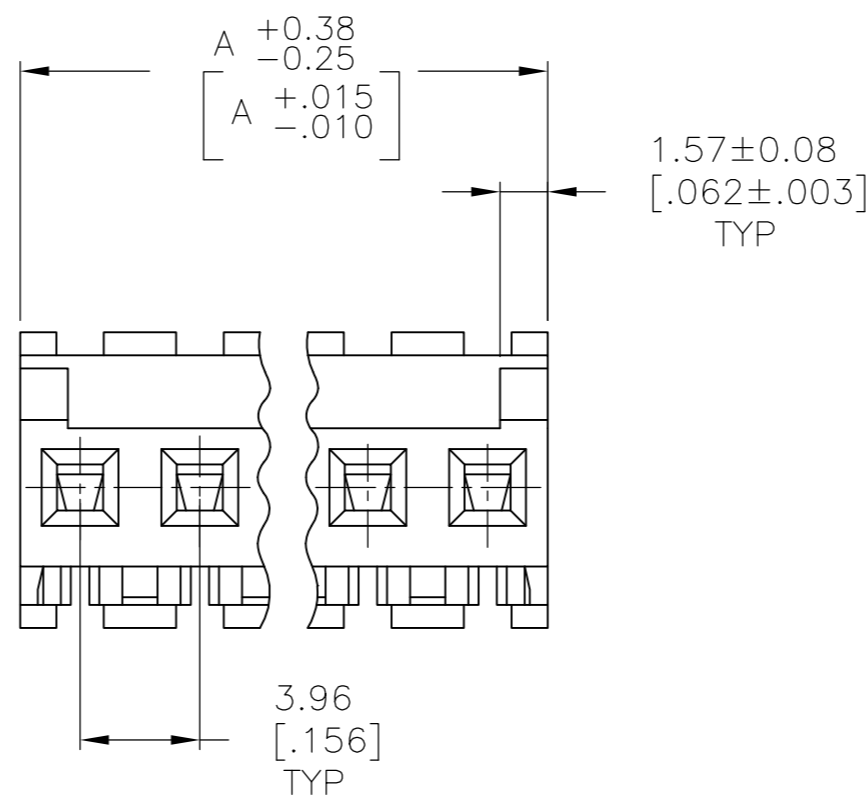
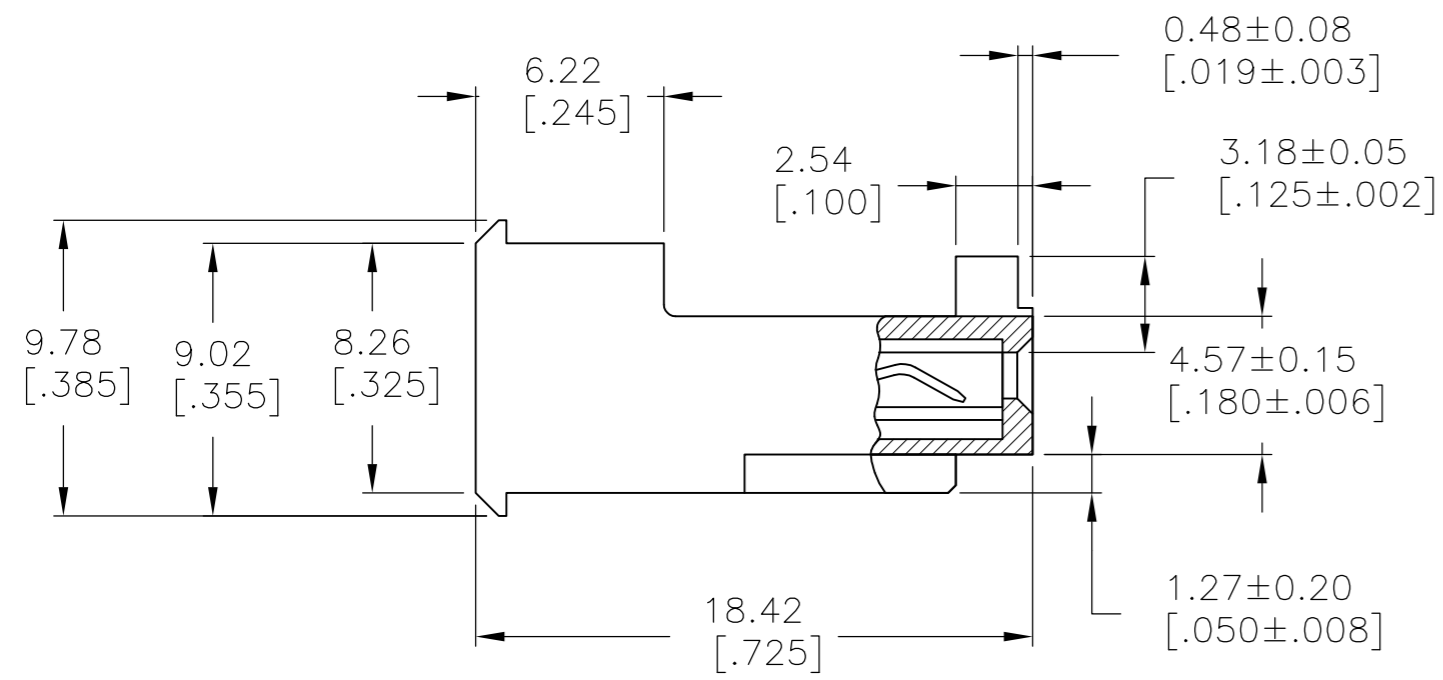
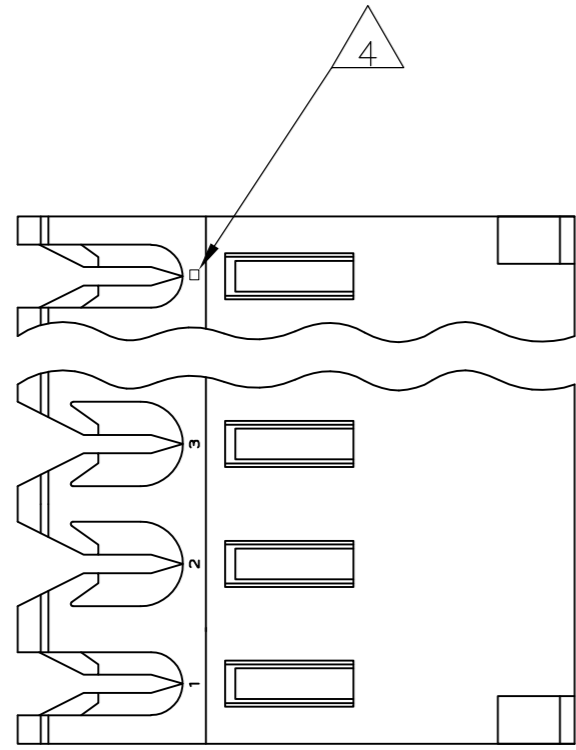
Address: A1208, Overseas Decoration Building, #122 Zhenhua RD., Futian, Shenzhen, China



THIS DRAWING IS UNPUBLISHED. RELEASED FOR PUBLICATION  
 © COPYRIGHT - By - ALL RIGHTS RESERVED.

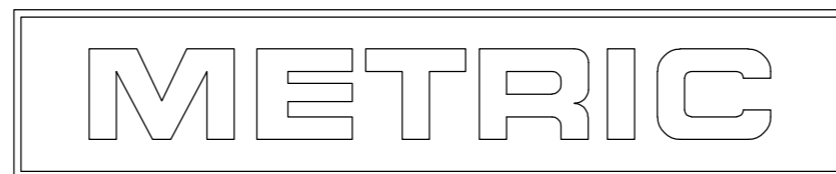
LOC	DIST	REVISIONS					
		P	LTR	DESCRIPTION	DATE	DWN	APVD
CM	54		D	REVISED PER ECO-12-007611	03AUG12	KH	SM

- 1 MATERIAL: CONNECTOR - NYLON UL94V-2  
 CONTACTS - 0.30[.012] THICK COPPER ALLOY  
 (BRIGHT TIN-LEAD 0.00203[.000080] MIN. THICK FOR CONTACTS 644471-2 THRU 1-644471-4)  
 (MATTE WHISKER MITIGATED TIN 0.00203[.000080] MIN THICKNESS OVER NICKEL UNDERPLATE FOR 3-644471-2 THRU 4-644471-4).
- 2 CONTACTS ACCEPT 22 AWG WIRE WITH 2.41[.095] MAX INSULATION DIAMETER.
- 3 CONTACTS MUST ACCEPT 1.14±0.03[.045±.001] SQUARE POST AND REMAIN LOCKED IN POSITION.
- 4 IDENTIFICATION NUMBER FOR LAST CIRCUIT MAY NOT APPEAR ON ALL ASSEMBLIES.
- 5 DIMENSIONS IN BRACKETS ARE IN INCHES.
- 6 HOUSING FEATURES ARE: FEED-THRU WITHOUT LOCKING RAMP AND WITH POLARIZING TAB.
- 7 OBSOLETE PARTS: OBSOLETE CIS STREAMLINING PER D.RENAUD/D.SINISI
- 8 RED COLOR STRIPE ON HOUSING (NOT SHOWN) MAY RUN DOWN BETWEEN RIBS



	55.47 [2.184]	14	4-644471-4	
	51.51 [2.028]	13	4-644471-3	
	47.55 [1.872]	12	4-644471-2	
	43.59 [1.716]	11	4-644471-1	
	39.62 [1.560]	10	4-644471-0	
	35.66 [1.404]	9	3-644471-9	
	31.70 [1.248]	8	3-644471-8	
	27.74 [1.092]	7	3-644471-7	
	23.77 [.936]	6	3-644471-6	
	19.81 [.780]	5	3-644471-5	
	15.85 [.624]	4	3-644471-4	
	11.89 [.468]	3	3-644471-3	
	7.92 [.312]	2	3-644471-2	
7	SUPERSEDED	55.47 [2.184]	14	1-644471-4
7	SUPERSEDED	51.51 [2.028]	13	1-644471-3
7	SUPERSEDED	47.55 [1.872]	12	1-644471-2
7	SUPERSEDED	43.59 [1.716]	11	1-644471-1
		39.62 [1.560]	10	1-644471-0
7	SUPERSEDED	35.66 [1.404]	9	644471-9
		31.70 [1.248]	8	644471-8
7	SUPERSEDED	27.74 [1.092]	7	644471-7
7	SUPERSEDED	23.77 [.936]	6	644471-6
		19.81 [.780]	5	644471-5
7	SUPERSEDED	15.85 [.624]	4	644471-4
7	SUPERSEDED	11.89 [.468]	3	644471-3
7	SUPERSEDED	7.92 [.312]	2	644471-2
	DIM A	NO OF CIRCUITS	PART NO	

644471



THIS DRAWING IS A CONTROLLED DOCUMENT.

DWN B. LEWIS 12 FEB 91  
 CHK R. SWING 12 FEB 91  
 APVD D.R. CLARK 20 FEB 91

TE Connectivity

MTA 156 CONNECTOR ASSEMBLY, 22 AWG, STANDARD

108-1051  
 114-1020

SIZE A2 CAGE CODE 00779 DRAWING NO C-644471 RESTRICTED TO -

WEIGHT - SCALE 4:1 SHEET 1 OF 1 REV D

CUSTOMER DRAWING