



Chipsmall Limited consists of a professional team with an average of over 10 year of expertise in the distribution of electronic components. Based in Hongkong, we have already established firm and mutual-benefit business relationships with customers from,Europe,America and south Asia,supplying obsolete and hard-to-find components to meet their specific needs.

With the principle of “Quality Parts,Customers Priority,Honest Operation,and Considerate Service”,our business mainly focus on the distribution of electronic components. Line cards we deal with include Microchip,ALPS,ROHM,Xilinx,Pulse,ON,Everlight and Freescale. Main products comprise IC,Modules,Potentiometer,IC Socket,Relay,Connector.Our parts cover such applications as commercial,industrial, and automotives areas.

We are looking forward to setting up business relationship with you and hope to provide you with the best service and solution. Let us make a better world for our industry!



Contact us

Tel: +86-755-8981 8866 Fax: +86-755-8427 6832

Email & Skype: info@chipsmall.com Web: www.chipsmall.com

Address: A1208, Overseas Decoration Building, #122 Zhenhua RD., Futian, Shenzhen, China

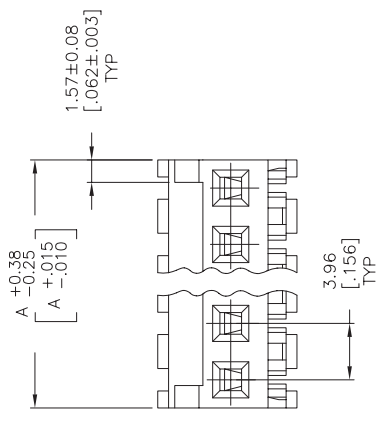
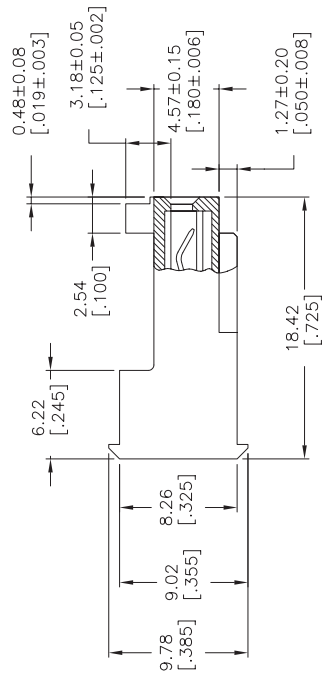
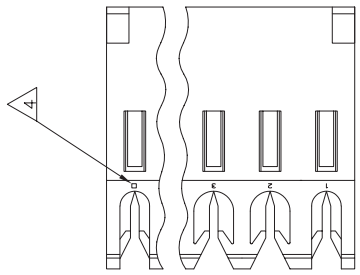


THIS DRAWING IS UNPUBLISHED.
 © COPYRIGHT BY TYCO ELECTRONICS CORPORATION. ALL RIGHTS RESERVED.

RELEASED FOR PUBLICATION
 BY TYCO ELECTRONICS CORPORATION.

LOC CM 54
 DIST 54
 P LTR D
 ECO-07-012863

REVISIONS
 DESCRIPTION DATE
 13JUN07 KW DB



1. MATERIAL: CONNECTOR - NYLON UL94V-2 (WHITE).
 CONTACTS - 0.30[.012] THICK COPPER ALLOY
 BRIGHT TIN-LEAD 0.00203[.000080] MIN THICK FOR CONTACTS
 644472-2 THRU 1-644472-4
 MATTE WHISKER MITIGATED TIN 0.00203[.000080] MIN THICKNESS
 OVER NICKEL UNDERPLATE FOR 3-644472-2 THRU 4-644472-4
2. CONTACTS ACCEPT 24 AWG WIRE WITH 2.41[.095] MAX
 INSULATION DIAMETER.
3. CONTACTS MUST ACCEPT 1.14±0.03 [.045±.001] SQUARE
 POST AND REMAIN LOCKED IN POSITION.
4. IDENTIFICATION NUMBER FOR LAST CIRCUIT MAY
 NOT APPEAR ON ALL ASSEMBLIES.
5. DIMENSIONS IN BRACKETS ARE IN INCHES.
6. HOUSING FEATURES ARE: FEED-THRU WITHOUT
 LOCKING RAMP AND WITH POLARIZING TAB.

DIM	NO OF	CIRCUITS
55.47	2.184	14
51.51	2.028	13
47.55	1.872	12
43.59	1.716	11
39.62	1.560	10
35.66	1.404	9
31.70	1.248	8
27.74	1.092	7
23.77	.936	6
19.81	.780	5
15.85	.624	4
11.89	.468	3
7.92	.312	2
55.47	2.184	14
51.51	2.028	13
47.55	1.872	12
43.59	1.716	11
39.62	1.560	10
35.66	1.404	9
31.70	1.248	8
27.74	1.092	7
23.77	.936	6
19.81	.780	5
15.85	.624	4
11.89	.468	3
7.92	.312	2
55.47	2.184	14
51.51	2.028	13
47.55	1.872	12
43.59	1.716	11
39.62	1.560	10
35.66	1.404	9
31.70	1.248	8
27.74	1.092	7
23.77	.936	6
19.81	.780	5
15.85	.624	4
11.89	.468	3
7.92	.312	2
55.47	2.184	14
51.51	2.028	13
47.55	1.872	12
43.59	1.716	11
39.62	1.560	10
35.66	1.404	9
31.70	1.248	8
27.74	1.092	7
23.77	.936	6
19.81	.780	5
15.85	.624	4
11.89	.468	3
7.92	.312	2
DIM A		
NO OF CIRCUITS		

THIS DRAWING IS A CONTROLLED DOCUMENT.		REV B	12 FEB 91
DESIGNED BY	SWING	12 FEB 91	
APPROVED BY	CLARK	20 FEB 91	
PRODUCT SPEC	108-1051		
APPLICATION SPEC	114-1020		
WEIGHT			
CUSTOMER DRAWING	AZ 00779	SCALE	4:1
MATERIAL		FINISH	
DIMENSIONS:		mm [INCHES]	
TOLERANCES UNLESS OTHERWISE SPECIFIED:			
F	PLC	±	
M	PLC	±	
H	PLC	±	
A	ANGLES	±	
MATERIAL		FINISH	
CUSTOMER DRAWING		SCALE	4:1
CUSTOMER DRAWING		SHEET	1 OF 1
CUSTOMER DRAWING		REV	D

