



Chipsmall Limited consists of a professional team with an average of over 10 year of expertise in the distribution of electronic components. Based in Hongkong, we have already established firm and mutual-benefit business relationships with customers from,Europe,America and south Asia,supplying obsolete and hard-to-find components to meet their specific needs.

With the principle of "Quality Parts,Customers Priority,Honest Operation,and Considerate Service",our business mainly focus on the distribution of electronic components. Line cards we deal with include Microchip,ALPS,ROHM,Xilinx,Pulse,ON,Everlight and Freescale. Main products comprise IC,Modules,Potentiometer,IC Socket,Relay,Connector.Our parts cover such applications as commercial,industrial, and automotives areas.

We are looking forward to setting up business relationship with you and hope to provide you with the best service and solution. Let us make a better world for our industry!



## Contact us

Tel: +86-755-8981 8866 Fax: +86-755-8427 6832

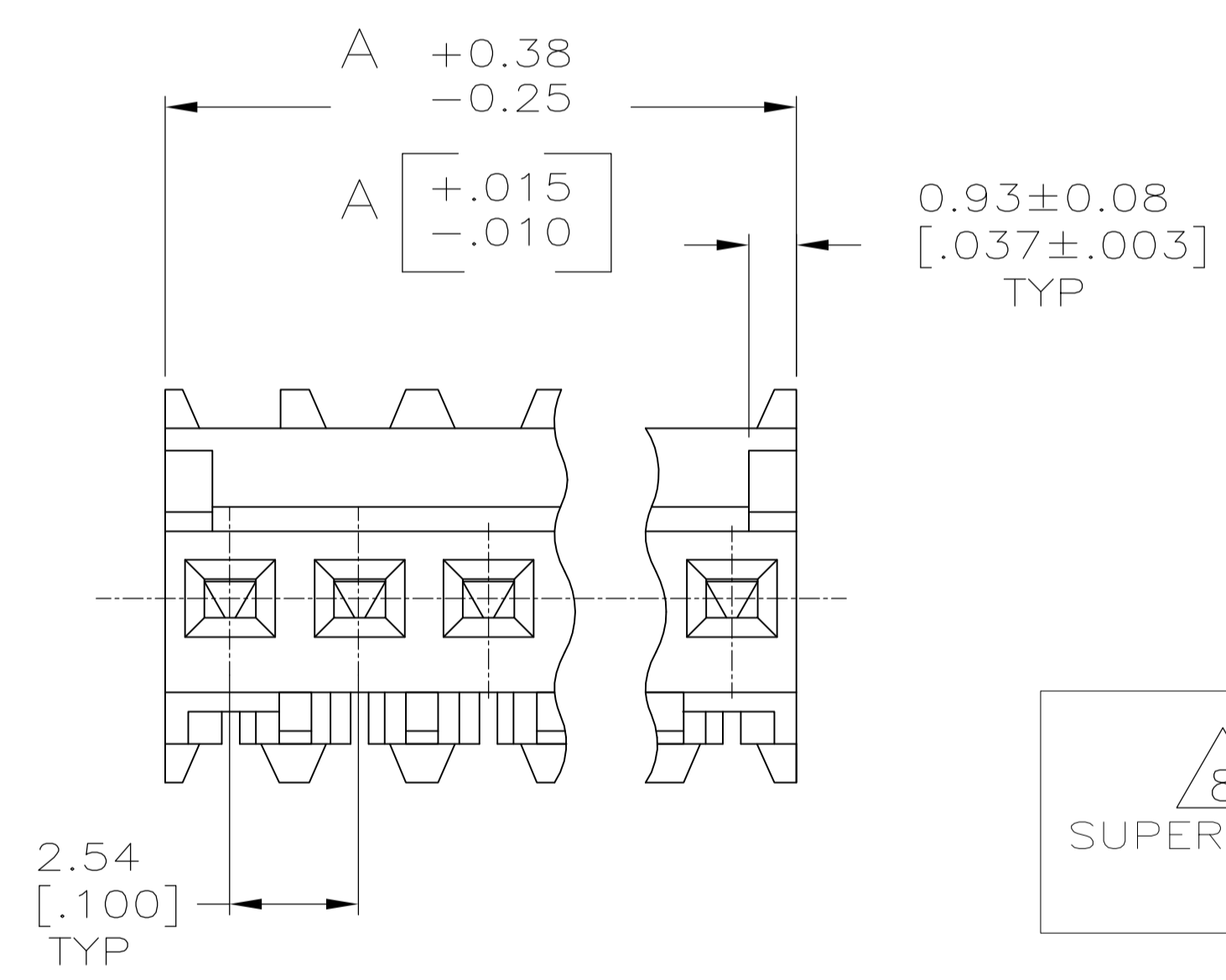
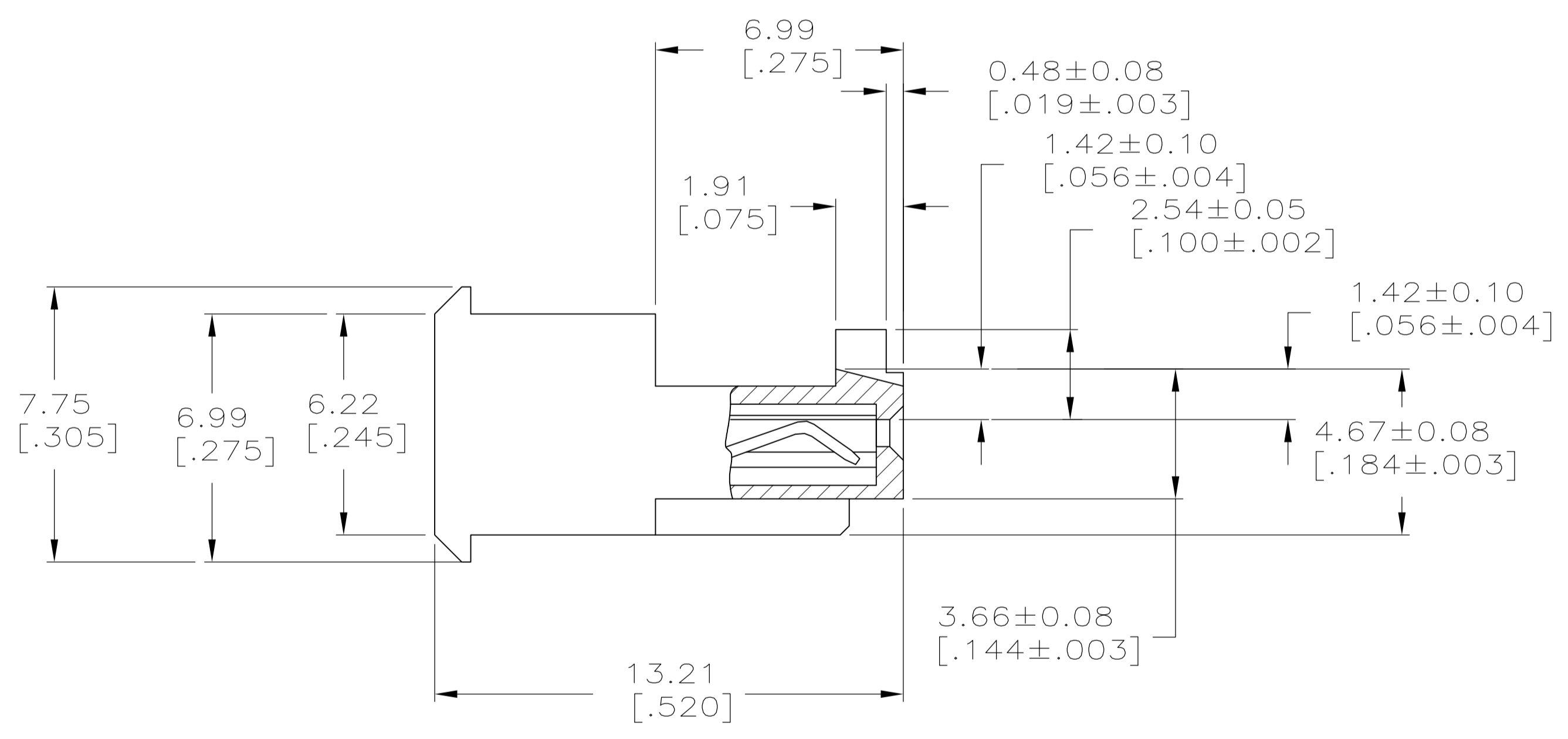
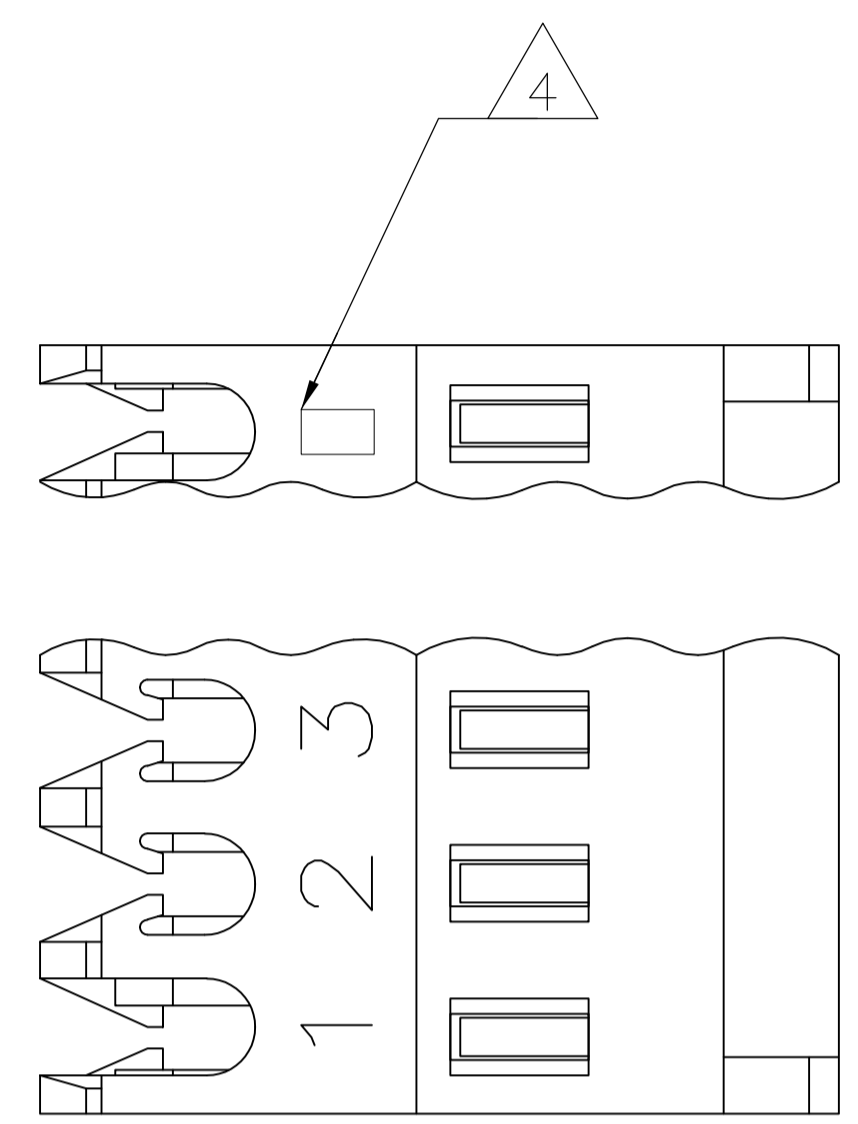
Email & Skype: info@chipsmall.com Web: www.chipsmall.com

Address: A1208, Overseas Decoration Building, #122 Zhenhua RD., Futian, Shenzhen, China



LOC		DIST		REVISIONS			
CM	00	REV	DATE	BY	APPV	DATE	BY
L	REVISED PER ECO-12-007504		03AUG12	KH	SM		

- 1 MATERIAL: CONNECTOR - NYLON UL94V-2.  
 CONTACTS - 0.30[.012] THICK COPPER ALLOY  
 0.00076[.000030] GOLD OR 0.00076[.000030]  
 TOTAL GOLD FLASH OVER PALLADIUM NICKEL,  
 PER TE CONNECTIVITY'S DISCRETION, IN CONTACT AREA  
 WITHBRIGHT TIN-LEAD SLOT AREA FOR 644702-2  
 THRU1-644702-6  
 OR MATTE WHISKER MITIGATED TIN FOR 3-644702-2
- 2 THRU 4-644702-6 OVER NICKEL UNDERPLATE.
- 3 CONTACTS ACCEPT 22 AWG WIRE WITH 1.52 [.060] MAX INSULATION DIAMETER.
- 4 CONTACTS MUST ACCEPT 0.64±0.03 [.025±.001] SQUARE POST AND REMAIN LOCKED IN POSITION.
- 5 IDENTIFICATION NUMBER FOR LAST CIRCUIT MAY NOT APPEAR ON ALL ASSEMBLIES.
- 6 DIMENSIONS IN BRACKETS ARE IN INCHES.
- 7 HOUSING FEATURES ARE: FEED THRU WITH LOCKING RAMP AND POLARIZING TAB.
- 8 OBSOLETE PARTS: OBSOLETE CIS STREAMLINING PER D.RENAUD/D.SINISI
- 9 RED COLOR STRIPE ON HOUSING (NOT SHOWN) MAY RUN DOWN BETWEEN RIBS.



TIN	40.64	[1.600]	16	4-644702-6
TIN	38.10	[1.500]	15	4-644702-5
TIN	35.56	[1.400]	14	4-644702-4
TIN	33.02	[1.300]	13	4-644702-3
TIN	30.48	[1.200]	12	4-644702-2
TIN	27.94	[1.100]	11	4-644702-1
TIN	25.40	[1.000]	10	4-644702-0
TIN	22.86	[.900]	9	3-644702-9
TIN	20.32	[.800]	8	3-644702-8
TIN	17.78	[.700]	7	3-644702-7
TIN	15.24	[.600]	6	3-644702-6
TIN	12.70	[.500]	5	3-644702-5
TIN	10.16	[.400]	4	3-644702-4
TIN	7.62	[.300]	3	3-644702-3
TIN	5.08	[.200]	2	3-644702-2

8 SUPERSEDED	TIN-LEAD	40.64	[1.600]	16	<del>1-644702-6</del>
	TIN-LEAD	38.10	[1.500]	15	<del>1-644702-5</del>
	TIN-LEAD	35.56	[1.400]	14	<del>1-644702-4</del>
	TIN-LEAD	33.02	[1.300]	13	<del>1-644702-3</del>
8 SUPERSEDED	TIN-LEAD	30.48	[1.200]	12	<del>1-644702-2</del>
	TIN-LEAD	27.94	[1.100]	11	<del>1-644702-1</del>
	TIN-LEAD	25.40	[1.000]	10	<del>1-644702-0</del>
	TIN-LEAD	22.86	[.900]	9	<del>644702-9</del>
8 SUPERSEDED	TIN-LEAD	20.32	[.800]	8	<del>644702-8</del>
	TIN-LEAD	17.78	[.700]	7	<del>644702-7</del>
	TIN-LEAD	15.24	[.600]	6	<del>644702-6</del>
	TIN-LEAD	12.70	[.500]	5	<del>644702-5</del>
8 SUPERSEDED	TIN-LEAD	10.16	[.400]	4	<del>644702-4</del>
	TIN-LEAD	7.62	[.300]	3	<del>644702-3</del>
	TIN-LEAD	5.08	[.200]	2	<del>644702-2</del>

FINISH	DIM A	NO. OF POSN	ASSEMBLY

THIS DRAWING IS A CONTROLLED DOCUMENT. **STE** TE Connectivity

DIMENSIONS: mm [INCHES]	TOLERANCES UNLESS OTHERWISE SPECIFIED:	0 PLC ±	1 PLC ±	2 PLC ±	3 PLC ±	4 PLC ±	ANGLES ±

THIS DRAWING IS A CONTROLLED DOCUMENT.	DIN S. HOOVER 28-DEC-2004	APPROV D. ROSSI 28-DEC-2004	NAME
PRODUCT SPEC	108-1050	APPLICATION SPEC	114-1019
MATERIAL	FINISH	WEIGHT	SCALE 8:1
1	1	A1 00779 644702	SHEET 1 OF 1

CUSTOMER DRAWING