



Chipsmall Limited consists of a professional team with an average of over 10 year of expertise in the distribution of electronic components. Based in Hongkong, we have already established firm and mutual-benefit business relationships with customers from,Europe,America and south Asia,supplying obsolete and hard-to-find components to meet their specific needs.

With the principle of “Quality Parts,Customers Priority,Honest Operation,and Considerate Service”,our business mainly focus on the distribution of electronic components. Line cards we deal with include Microchip,ALPS,ROHM,Xilinx,Pulse,ON,Everlight and Freescale. Main products comprise IC,Modules,Potentiometer,IC Socket,Relay,Connector.Our parts cover such applications as commercial,industrial, and automotives areas.

We are looking forward to setting up business relationship with you and hope to provide you with the best service and solution. Let us make a better world for our industry!



Contact us

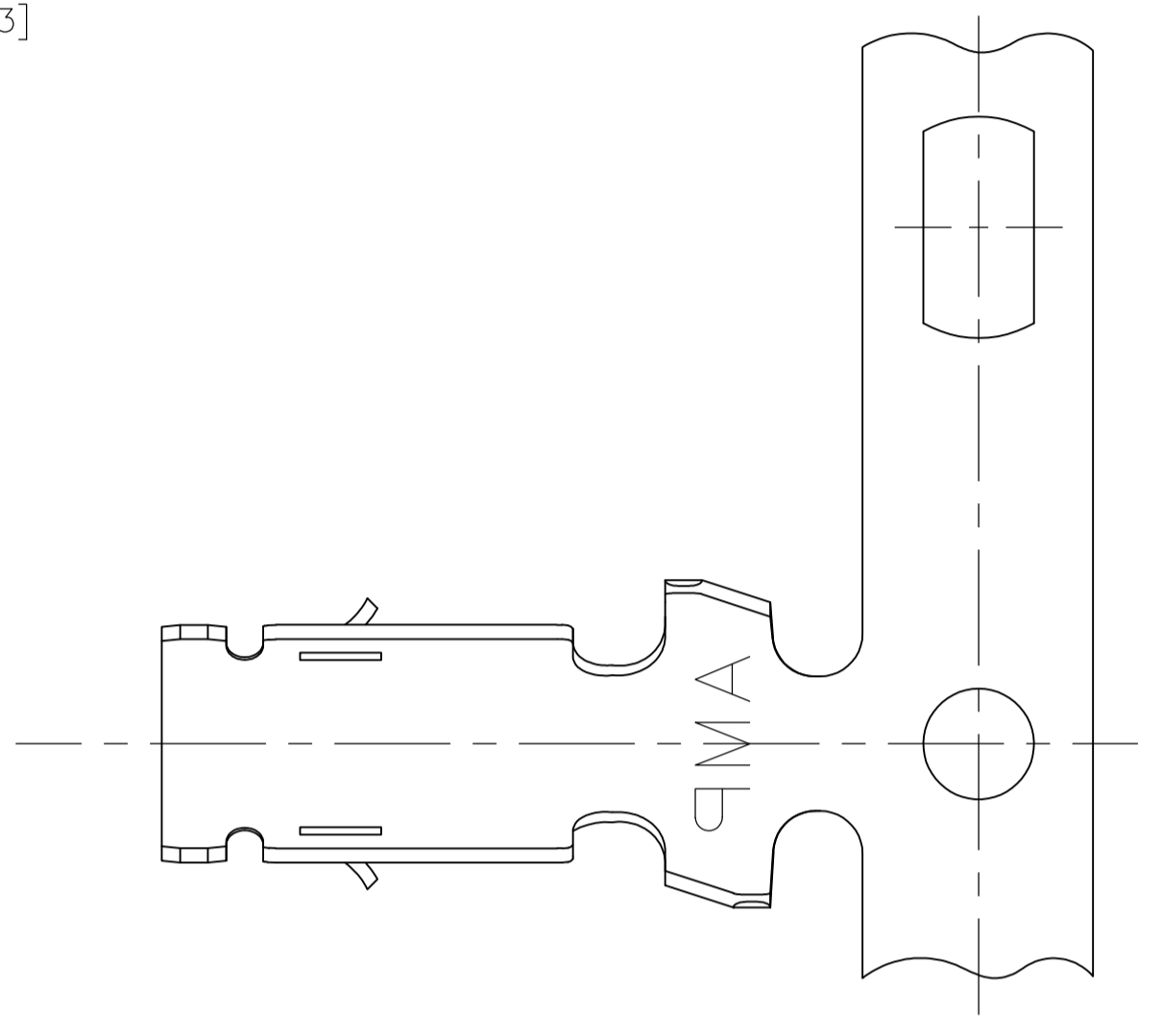
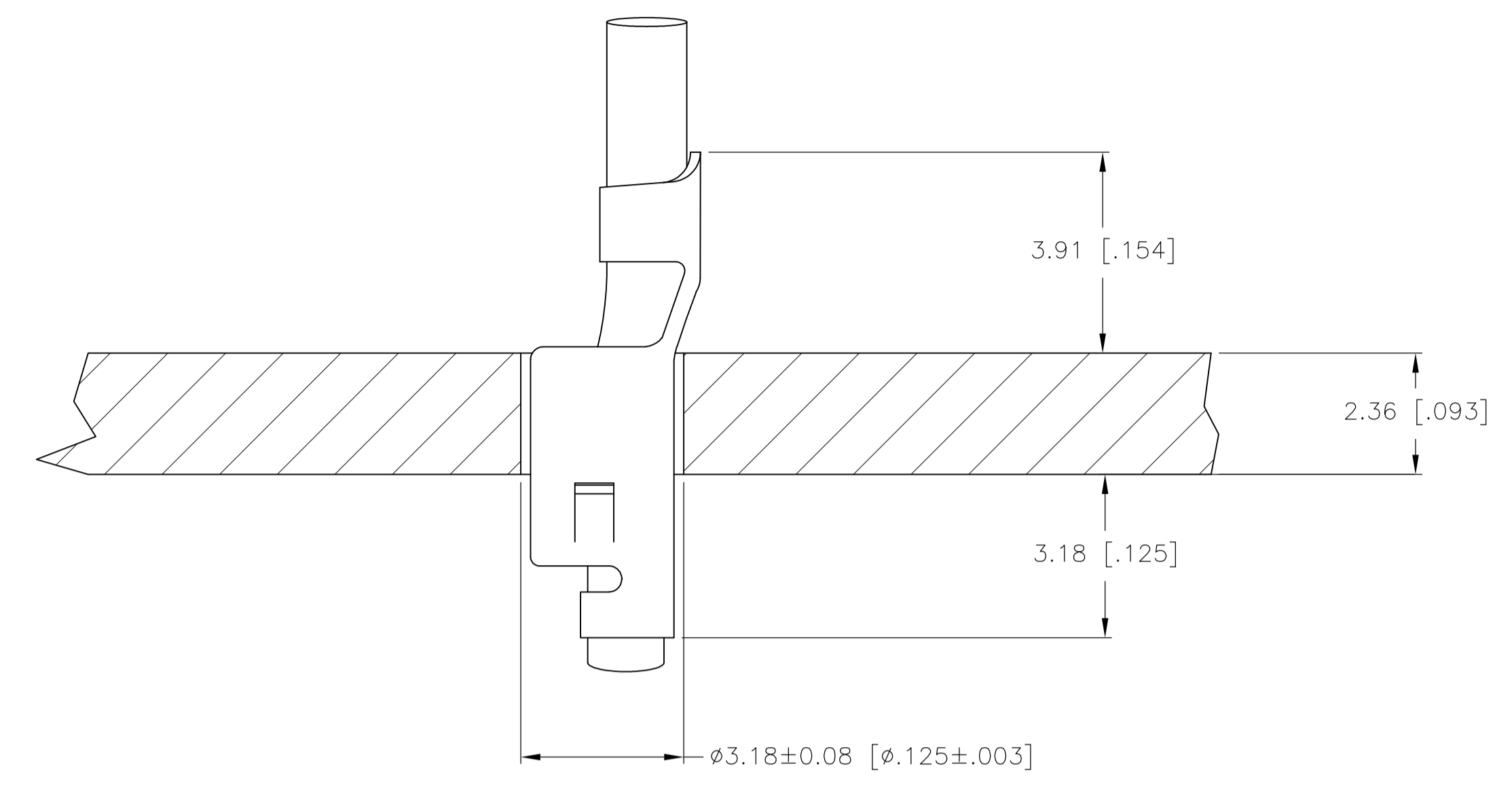
Tel: +86-755-8981 8866 Fax: +86-755-8427 6832

Email & Skype: info@chipsmall.com Web: www.chipsmall.com

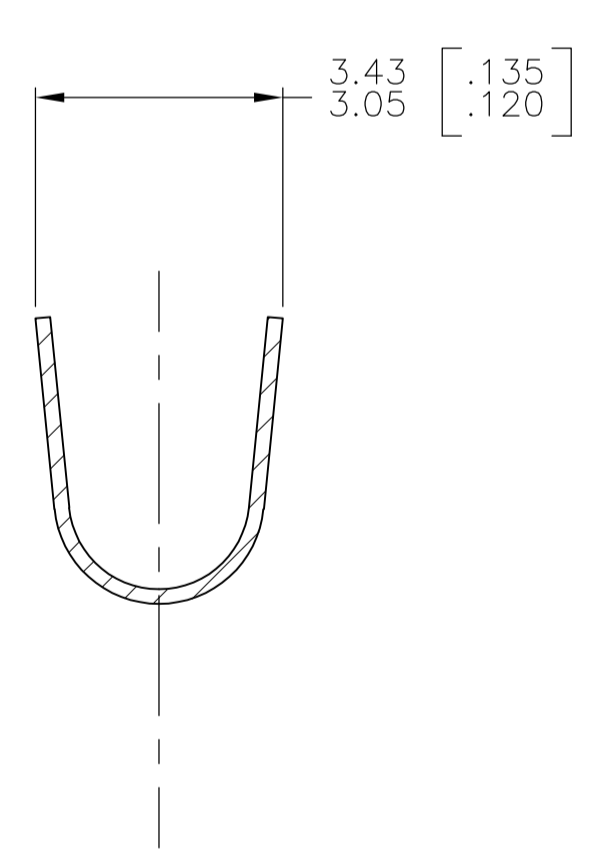
Address: A1208, Overseas Decoration Building, #122 Zhenhua RD., Futian, Shenzhen, China



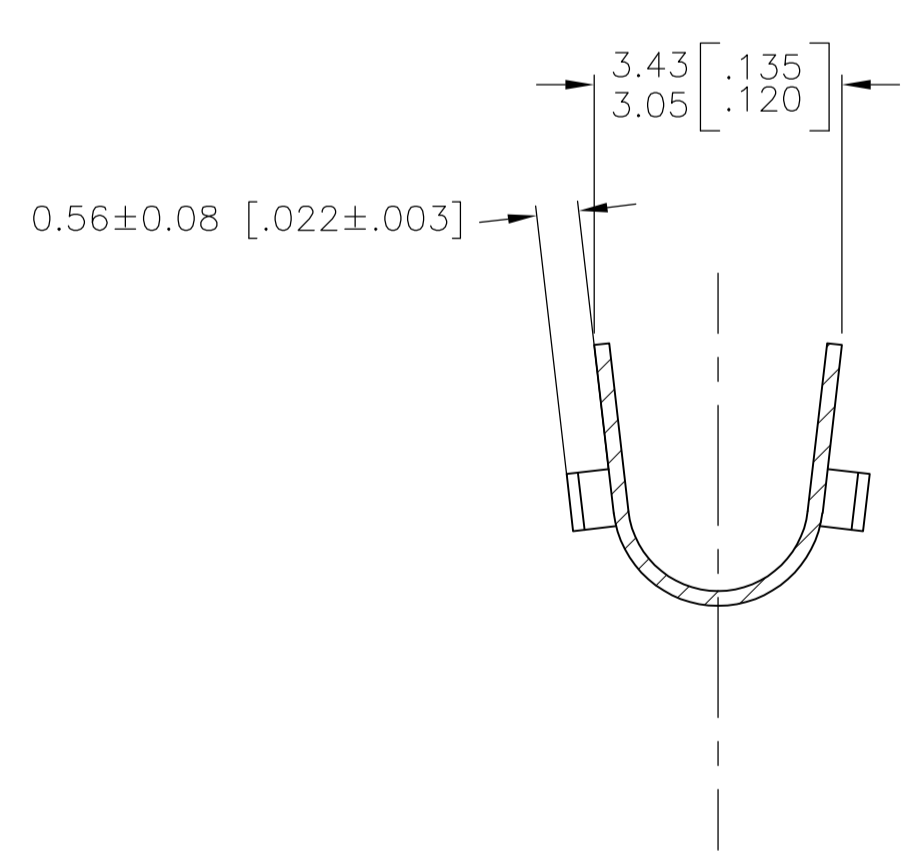
LOC		DIST		REVISIONS			
P	LYR	DESCRIPTION	DATE	DNW	APVD		
A		REVISED PER ECR-14-015450	18OCT2014	NK	GJ		



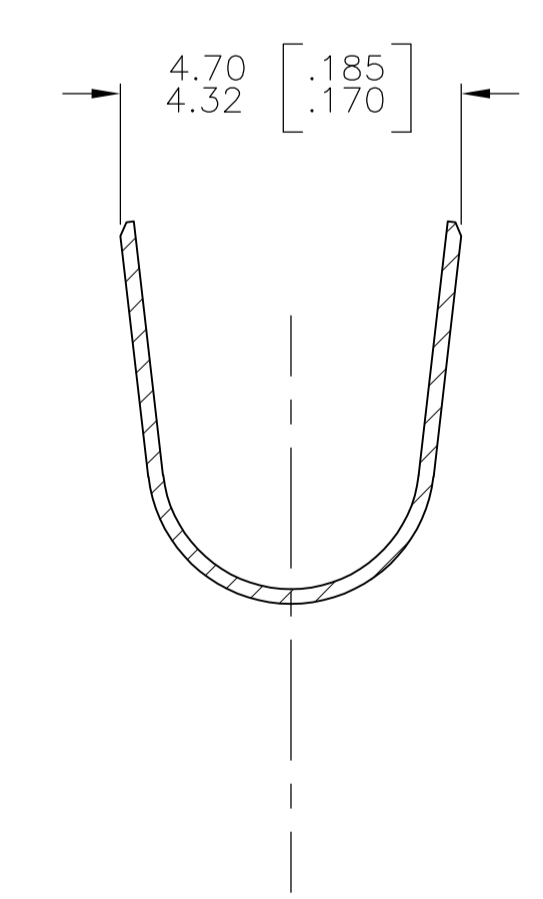
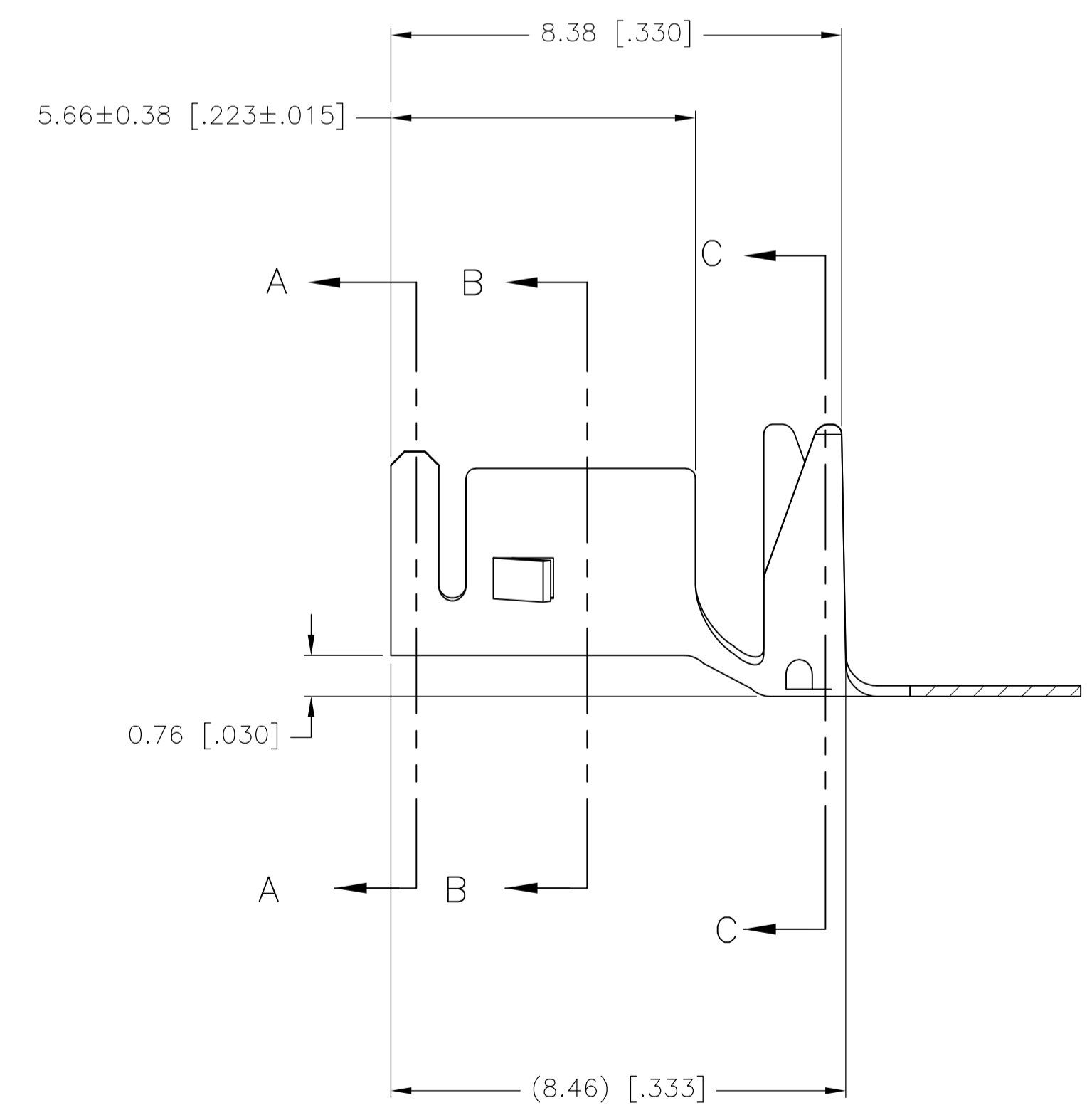
- 1 PARTS MUST MEET TE SOLDERABILITY SPEC. 109-11-3.
- 2 PART FITS IN 3.18±0.076 [.125±.003] DIAMETER HOLE IN P.C. BOARD.
- 3 PRE-PLATED 0.005008 [.000200] MINIMUM BRIGHT TIN-LEAD.
- 4 ACCEPTS (2) SOLID 16 AWG WIRE OR (1) 2.0 mm² STRANDED WIRE PROVIDED THE SOLDER PROCESS FILLS ALL GAPS.
- 5 CRIMP APPLICATOR WIDTH: WIRE BARREL .110 F TYPE, STABILIZER .110 O TYPE, INSULATION BARREL .155 O TYPE.
- 6 CRIMP HEIGHTS:
 (2) 16 AWG SOLID WIRES: WIRE BARREL .073 ±.002", STABILIZER BARREL .115 ±.003"
 (1) 2.0 mm² STRANDED WIRE: WIRE BARREL .050 ±.002", STABILIZER BARREL .115 ±.003".
- 7 PRE-PLATED 0.005008 [.000200] MINIMUM BRIGHT TIN.



SECTION A-A



SECTION B-B



SECTION C-C

OBSOLETE	7	3-647505-1
	3	647505-1
	FINISH	PART NUMBER

THIS DRAWING IS A CONTROLLED DOCUMENT.		DIN S. HAMM 05-APR-2001		TE Connectivity NAME: TERMINAL, MINI AMP-IN 2.36 [.093] THICK P.C. BOARD, SPECIAL	
DIMENSIONS: mm [INCHES]		TOLERANCES UNLESS OTHERWISE SPECIFIED:			
0 PLC ± 1 PLC ± 2 PLC ± 3 PLC ± 0.13 [.005] 4 PLC ± ANGLES ±		FINISH: 3		APPLICATION SPEC: A1 00779 C=647505	
MATERIAL: 0.198[.0078] PH BRZ		WEIGHT: 10:1		SCALE: 10:1 SHEET 1 OF 1 REV A	