



Chipsmall Limited consists of a professional team with an average of over 10 year of expertise in the distribution of electronic components. Based in Hongkong, we have already established firm and mutual-benefit business relationships with customers from,Europe,America and south Asia,supplying obsolete and hard-to-find components to meet their specific needs.

With the principle of “Quality Parts,Customers Priority,Honest Operation,and Considerate Service”,our business mainly focus on the distribution of electronic components. Line cards we deal with include Microchip,ALPS,ROHM,Xilinx,Pulse,ON,Everlight and Freescale. Main products comprise IC,Modules,Potentiometer,IC Socket,Relay,Connector.Our parts cover such applications as commercial,industrial, and automotives areas.

We are looking forward to setting up business relationship with you and hope to provide you with the best service and solution. Let us make a better world for our industry!



Contact us

Tel: +86-755-8981 8866 Fax: +86-755-8427 6832

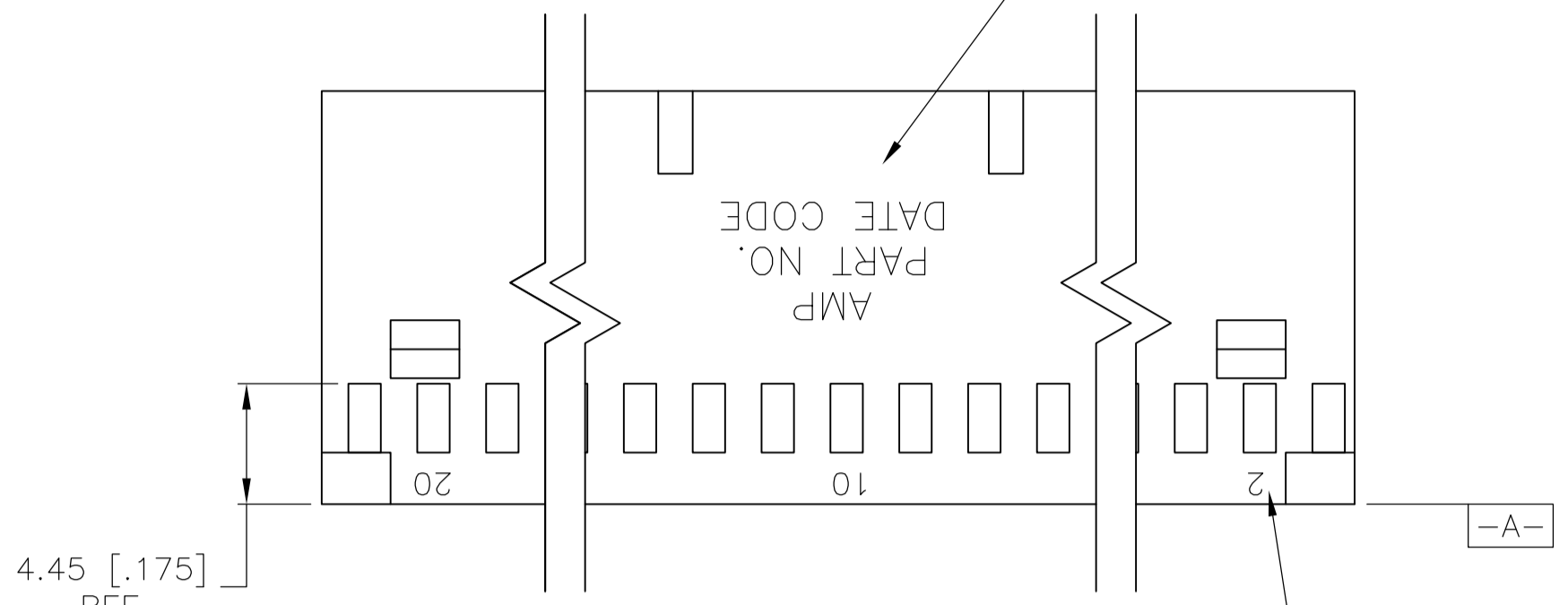
Email & Skype: info@chipsmall.com Web: www.chipsmall.com

Address: A1208, Overseas Decoration Building, #122 Zhenhua RD., Futian, Shenzhen, China

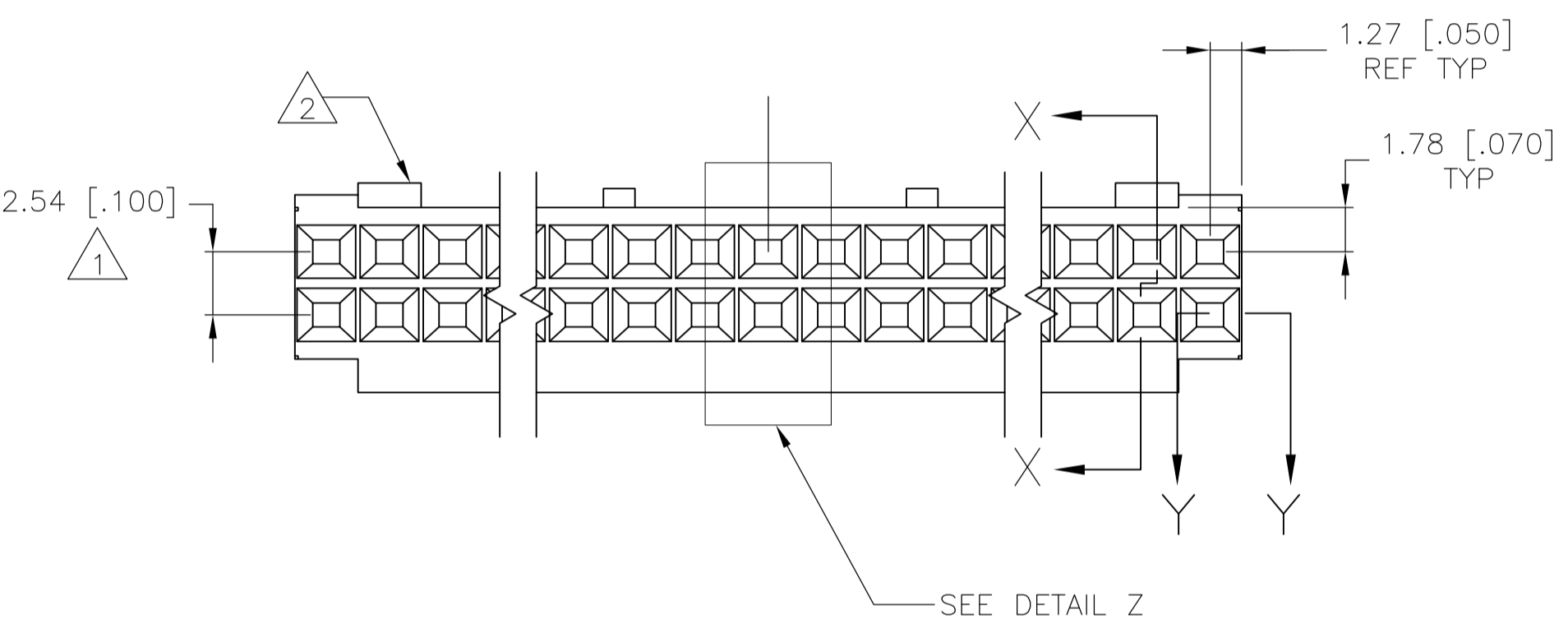


| LOC | | DIST | | REVISIONS | | | | |
|-----|----|------|-------------|---------------|---------|-----|------|--|
| AD | 00 | P | LTR | DESCRIPTION | DATE | DMN | APVO | |
| | | W4 | REVISED PER | ECO-13-004115 | 07MAR13 | KH | JO | |

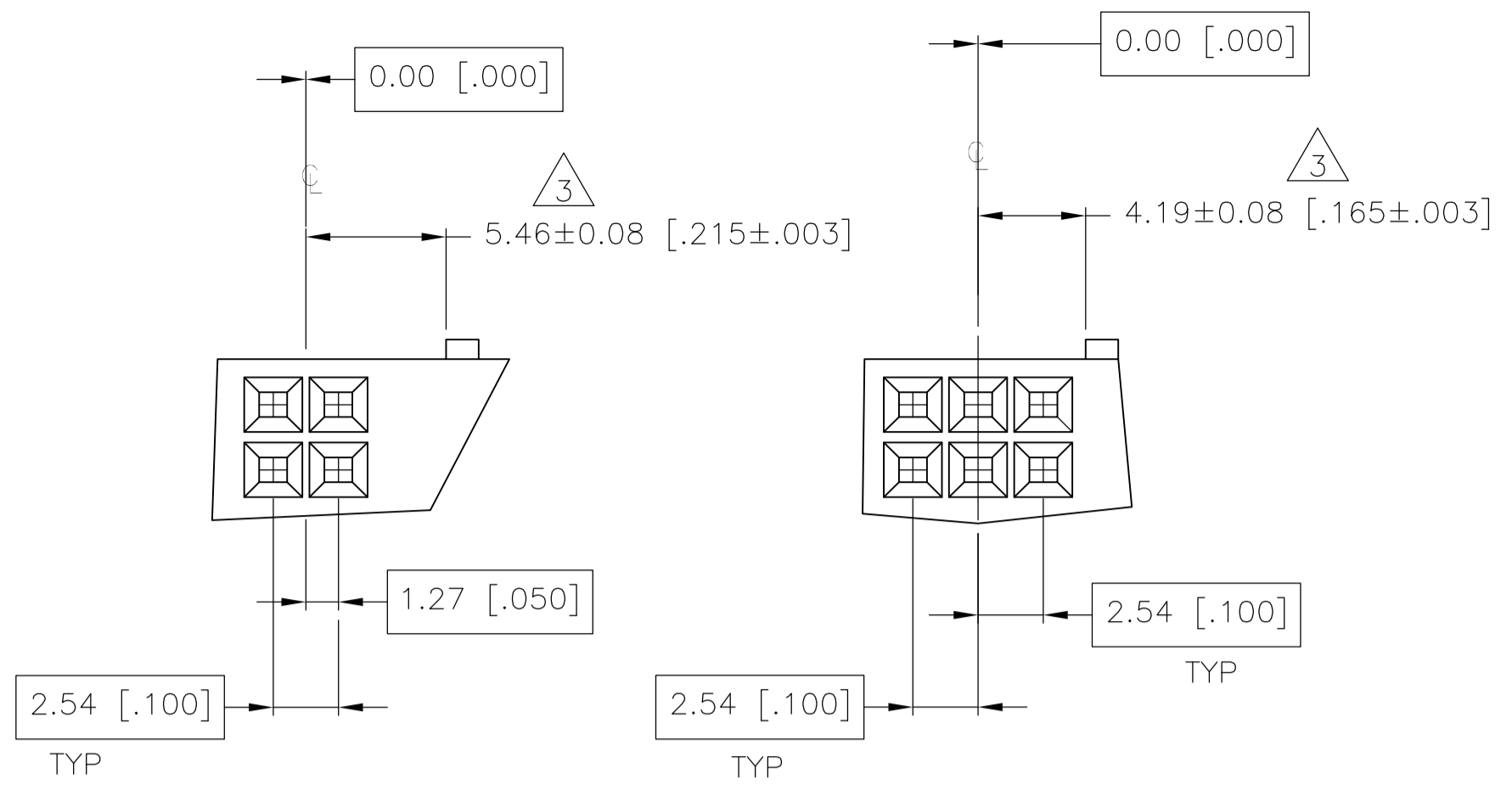
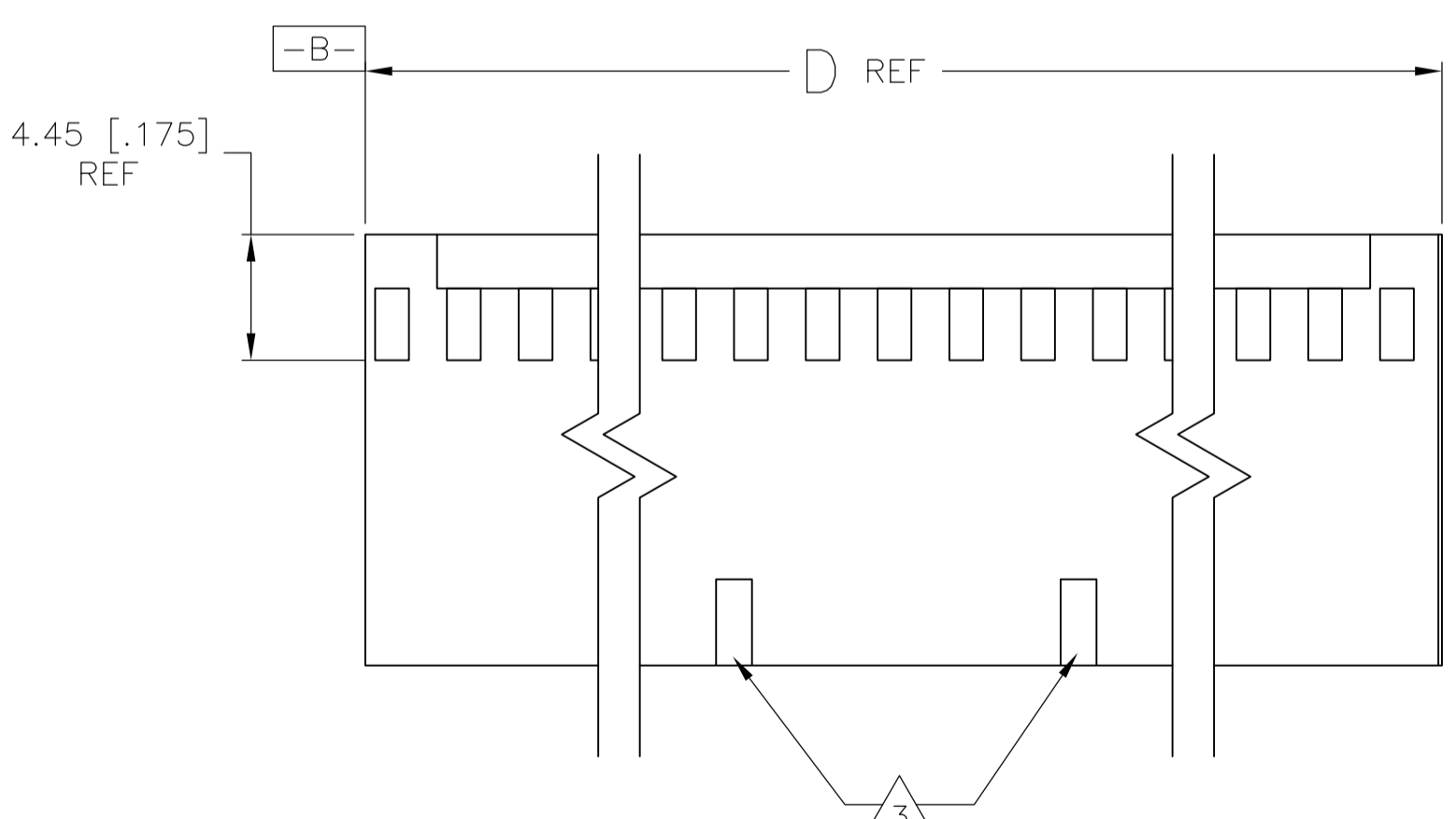
"AMP", PART NO. & DATE CODE
 MARKED (WHITE) 1.58±0.38 [.062±.015] HIGH CHARS.
 IN AREA SHOWN WHEN HOUSING SIZE PERMITS



CAVITY IDENT. MARKED (WHITE)
 1.17±0.38 [.046±.015] HIGH CHARS. SECOND AND
 EVERY FIFTH CAVITY, ONE SIDE.



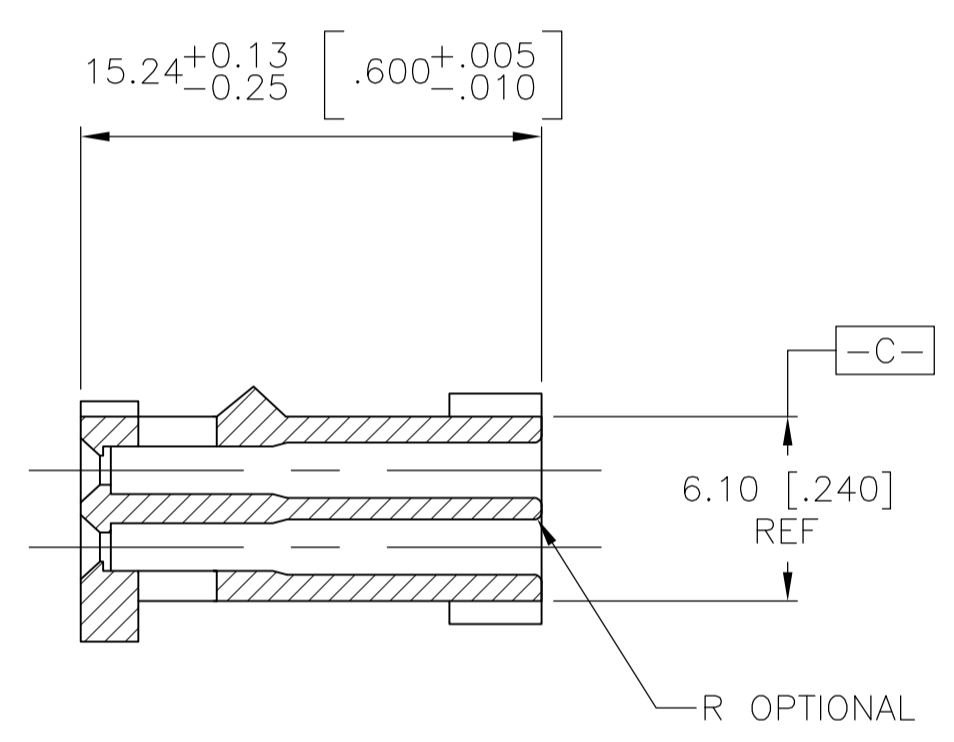
SEE DETAIL Z



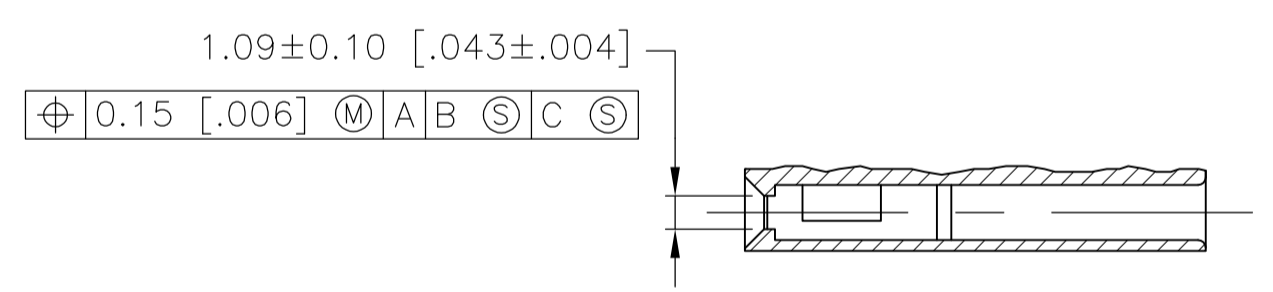
BASIC DIMENSION FOR
 ODD NUMBER OF SPACES
 (SEE THE TABLE)

BASIC DIMENSION FOR
 EVEN NUMBER OF SPACES
 (SEE THE TABLE)

DETAIL Z



SECTION X-X



SECTION Y-Y
 ROTATED 90° CLOCKWISE

- 2 SEE TABLE FOR NUMBER OF DETENTS. DETENT ON THIS SIDE FOR HOUSINGS WITH ONE DETENT.
- 3 STRAIN RELIEF LOCATORS WILL APPEAR ON 20 POSITION AND LARGER HOUSINGS.
- 4 USE EXTRACTION TOOL 91052-1 TO REMOVE RECEPTACLE CONTACTS.
- 5 THESE HOUSINGS ARE COMPATIBLE WITH ANY MOD II SHROUDED HEADER.
- 6 HOUSINGS WILL ACCOMMODATE ALL MOD IV, IV.5 AND MOD V CONTACTS.
- 7 MATERIAL: FLAME RETARDANT GLASS FILLED NYLON, COLOR: BLACK PER ASTM D4066.
- 8 OBSOLETE PARTS: OBSOLETE CIS STREAMLINING PER D.RENAUD/D.SINISI

| MARKING | NO. OF DETENTS | D | NO. OF SPACES | NO. OF POSN | PART NUMBER | |
|------------|----------------|---|---------------|-------------|-------------|-----------|
| 8 OBSOLETE | ALL | 2 | 81.28 [3.200] | 31 | 64 | 6-87631-6 |
| | NONE | 2 | 81.28 [3.200] | 31 | 64 | 6-87631-5 |
| | ALL | 2 | 73.66 [2.900] | 28 | 58 | 6-87631-4 |
| 8 OBSOLETE | NONE | 2 | 73.66 [2.900] | 28 | 58 | 6-87631-3 |
| | | | | | | 6-87631-2 |
| | | | | | | 6-87631-1 |
| | ALL | 2 | 60.96 [2.400] | 23 | 48 | 6-87631-0 |
| 8 OBSOLETE | NONE | 2 | 60.96 [2.400] | 23 | 48 | 5-87631-9 |
| 8 OBSOLETE | ALL | 2 | 88.90 [3.500] | 35 | 72 | 5-87631-8 |
| | NONE | 2 | 88.90 [3.500] | 35 | 72 | 5-87631-7 |
| | ALL | 2 | 88.90 [3.500] | 34 | 70 | 5-87631-6 |
| | NONE | 2 | 88.90 [3.500] | 34 | 70 | 5-87631-5 |
| | ALL | 2 | 83.82 [3.300] | 32 | 66 | 5-87631-4 |
| 8 OBSOLETE | NONE | 2 | 83.82 [3.300] | 32 | 66 | 5-87631-3 |
| | ALL | 2 | 76.20 [3.000] | 29 | 60 | 5-87631-2 |
| | NONE | 2 | 76.20 [3.000] | 29 | 60 | 5-87631-1 |
| | | | | | | 5-87631-0 |
| | | | | | | 4-87631-9 |
| | | | | | | 4-87631-8 |
| | | | | | | 4-87631-7 |
| 8 OBSOLETE | ALL | 2 | 68.58 [2.700] | 26 | 54 | 4-87631-6 |
| | NONE | 2 | 68.58 [2.700] | 26 | 54 | 4-87631-5 |
| | ALL | 2 | 66.04 [2.600] | 25 | 52 | 4-87631-4 |
| | NONE | 2 | 66.04 [2.600] | 25 | 52 | 4-87631-3 |
| | ALL | 2 | 63.50 [2.500] | 24 | 50 | 4-87631-2 |
| | NONE | 2 | 63.50 [2.500] | 24 | 50 | 4-87631-1 |
| | ALL | 2 | 55.88 [2.200] | 21 | 44 | 4-87631-0 |
| 8 OBSOLETE | NONE | 2 | 55.88 [2.200] | 21 | 44 | 3-87631-9 |
| | ALL | 2 | 53.34 [2.100] | 20 | 42 | 3-87631-8 |
| | NONE | 2 | 53.34 [2.100] | 20 | 42 | 3-87631-7 |
| | ALL | 2 | 50.80 [2.000] | 19 | 40 | 3-87631-6 |
| | NONE | 2 | 50.80 [2.000] | 19 | 40 | 3-87631-5 |
| | ALL | 2 | 48.26 [1.900] | 18 | 38 | 3-87631-4 |
| | NONE | 2 | 48.26 [1.900] | 18 | 38 | 3-87631-3 |
| | ALL | 2 | 45.72 [1.800] | 17 | 36 | 3-87631-2 |
| | NONE | 2 | 45.72 [1.800] | 17 | 36 | 3-87631-1 |
| | ALL | 2 | 43.18 [1.700] | 16 | 34 | 3-87631-0 |
| | NONE | 2 | 43.18 [1.700] | 16 | 34 | 2-87631-9 |
| | ALL | 2 | 40.64 [1.600] | 15 | 32 | 2-87631-8 |
| | NONE | 2 | 40.64 [1.600] | 15 | 32 | 2-87631-7 |
| | ALL | 2 | 38.10 [1.500] | 14 | 30 | 2-87631-6 |
| | NONE | 2 | 38.10 [1.500] | 14 | 30 | 2-87631-5 |
| | ALL | 2 | 35.56 [1.400] | 13 | 28 | 2-87631-4 |
| | NONE | 2 | 35.56 [1.400] | 13 | 28 | 2-87631-3 |
| | ALL | 2 | 33.02 [1.300] | 12 | 26 | 2-87631-2 |
| | NONE | 2 | 33.02 [1.300] | 12 | 26 | 2-87631-1 |
| | ALL | 2 | 30.48 [1.200] | 11 | 24 | 2-87631-0 |
| | NONE | 2 | 30.48 [1.200] | 11 | 24 | 1-87631-9 |
| | ALL | 2 | 27.94 [1.100] | 10 | 22 | 1-87631-8 |
| | NONE | 2 | 27.94 [1.100] | 10 | 22 | 1-87631-7 |
| | ALL | 2 | 25.40 [1.000] | 9 | 20 | 1-87631-6 |
| | NONE | 2 | 25.40 [1.000] | 9 | 20 | 1-87631-5 |
| | ALL | 1 | 22.86 [.900] | 8 | 18 | 1-87631-4 |
| | NONE | 1 | 22.86 [.900] | 8 | 18 | 1-87631-3 |
| | ALL | 1 | 20.32 [.800] | 7 | 16 | 1-87631-2 |
| | NONE | 1 | 20.32 [.800] | 7 | 16 | 1-87631-1 |
| | ALL | 1 | 17.78 [.700] | 6 | 14 | 1-87631-0 |
| | NONE | 1 | 17.78 [.700] | 6 | 14 | 87631-9 |
| | ALL | 1 | 15.24 [.600] | 5 | 12 | 87631-8 |
| | NONE | 1 | 15.24 [.600] | 5 | 12 | 87631-7 |
| | ALL | 1 | 12.70 [.500] | 4 | 10 | 87631-6 |
| | NONE | 1 | 12.70 [.500] | 4 | 10 | 87631-5 |
| | ALL | 1 | 10.16 [.400] | 3 | 8 | 87631-4 |
| | NONE | 1 | 10.16 [.400] | 3 | 8 | 87631-3 |
| | ALL | 1 | 7.62 [.300] | 2 | 6 | 87631-2 |
| | NONE | 1 | 7.62 [.300] | 2 | 6 | 87631-1 |

THIS DRAWING IS A CONTROLLED DOCUMENT. DIN E. BRANDBERG 09FEB94
 CHK: S. SHUEY 08NOV94
 APVD: D. DUPLER 08NOV94
 NAME: CONNECTOR, MOD IV, CRIMP SNAP-IN, WITH DETENT

DIMENSIONS: mm [INCHES] TOLERANCES UNLESS OTHERWISE SPECIFIED:
 0. PLC ± -
 1. PLC ± -
 2. PLC ± 0.13[.005]
 3. PLC ± -
 4. PLC ± -
 ANGLES ± -

MATERIAL: FINISH: WEIGHT: A1 00779 C=87631
 CUSTOMER DRAWING SCALE: 4:1 SHEET 1 OF 1 REV W4

STE TE Connectivity