



Chipsmall Limited consists of a professional team with an average of over 10 year of expertise in the distribution of electronic components. Based in Hongkong, we have already established firm and mutual-benefit business relationships with customers from,Europe,America and south Asia,supplying obsolete and hard-to-find components to meet their specific needs.

With the principle of “Quality Parts,Customers Priority,Honest Operation,and Considerate Service”,our business mainly focus on the distribution of electronic components. Line cards we deal with include Microchip,ALPS,ROHM,Xilinx,Pulse,ON,Everlight and Freescale. Main products comprise IC,Modules,Potentiometer,IC Socket,Relay,Connector.Our parts cover such applications as commercial,industrial, and automotives areas.

We are looking forward to setting up business relationship with you and hope to provide you with the best service and solution. Let us make a better world for our industry!



Contact us

Tel: +86-755-8981 8866 Fax: +86-755-8427 6832

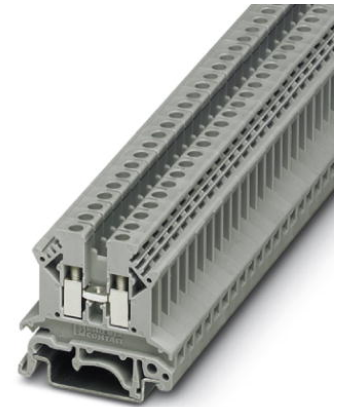
Email & Skype: info@chipsmall.com Web: www.chipsmall.com

Address: A1208, Overseas Decoration Building, #122 Zhenhua RD., Futian, Shenzhen, China



UK 2,5 B

Order No.: 3001035



<http://eshop.phoenixcontact.de/phoenix/treeViewClick.do?UID=3001035>

Feed-through modular terminal block, Type of connection: Screw connection, Cross section: 0.2 mm² - 4 mm², AWG 24 - 12, Width: 6.2 mm, Color: gray, Mounting type: NS 35/7,5, NS 35/15

Commercial data

| | |
|----------------|---------------|
| EAN | 4017918089788 |
| Pack | 50 pcs. |
| Customs tariff | 85369010 |
| Weight/Piece | 0.008138 KG |

Product notes

WEEE/RoHS-compliant since:
01/01/2003



<http://>

www.download.phoenixcontact.com
Please note that the data given here has been taken from the online catalog. For comprehensive information and data, please refer to the user documentation. The General Terms and Conditions of Use apply to Internet downloads.

Certificates / Approvals



Certification

BV, CSA, CUL, GOST, KEMA, KR, LR, RS, UL

CSA

| | |
|-----------------------|-------|
| Nominal voltage U_N | 600 V |
| Nominal current I_N | 25 A |
| AWG/kcmil | 28-12 |

CUL

| | |
|-----------------------|-------|
| Nominal voltage U_N | 600 V |
| Nominal current I_N | 20 A |
| AWG/kcmil | 30-12 |

UL

| | |
|-----------------------|-------|
| Nominal voltage U_N | 600 V |
| Nominal current I_N | 20 A |
| AWG/kcmil | 30-12 |

Accessories

| Item | Designation | Description |
|-----------------|--------------------------|--|
| Assembly | | |
| 3003224 | ATP-UK | Partition plate, Length: 56 mm, Width: 1.5 mm, Height: 59 mm, Color: gray |
| 3022218 | CLIPFIX 35 | Snap-on end bracket, for 35 mm NS 35/7.5 or NS 35/15 DIN rail, can be fitted with Zack strip ZB 8 and ZB 8/27, terminal strip marker KLM 2 and KLM, width: 9.5 mm, color: gray |
| 3001022 | D-UK 2,5 | End cover, Length: 37.6 mm, Width: 1.5 mm, Height: 30.7 mm, Color: gray |
| 3001103 | D-UK 2,5 BU | End cover, Length: 42.5 mm, Width: 1.5 mm, Height: 42 mm, Color: blue |
| 1201442 | E/UK | End clamp, for assembly on NS 32 or NS 35/7,5 DIN rail |
| 0201595 | FB-150 METER | Cross connection rail, for fixed bridging of identical inputs and outputs, made of Cu, nickel-plated, 1 m long |
| 1201028 | NS 32 AL UNPERF 2000MM | G rail 32 mm (NS 32) |
| 1201002 | NS 32 PERF 2000MM | G-profile DIN rail, material: Steel, perforated, height 15 mm, width 32 mm, length 2 m |
| 1201015 | NS 32 UNPERF 2000MM | G-profile DIN rail, material: Steel, unperforated, height 15 mm, width 32 mm, length 2 m |
| 0801733 | NS 35/ 7,5 PERF 2000MM | DIN rail, material: Steel, galvanized and passivated with a thick layer, perforated, height 7.5 mm, width 35 mm, length: 2 m |
| 0801681 | NS 35/ 7,5 UNPERF 2000MM | DIN rail, material: Steel, unperforated, height 7.5 mm, width 35 mm, length: 2 m |

| | | |
|---------|---------------------------|---|
| 1201756 | NS 35/15 AL UNPERF 2000MM | DIN rail, deep-drawn, high profile, unperforated, 1.5 mm thick, material: Aluminum, height 15 mm, width 35 mm, length 2 m |
| 2770215 | TS-KK 3 | Separating plate, Color: gray |
| 0200017 | ZSR-EX | Distance piece, metal, for branches of FB-150, with screw and thrust washer |

Bridges

| | | |
|---------|-------------|---|
| 0201155 | EB 2- 6 | Cross connector/bridge, Number of positions: 2, Color: gray |
| 0201142 | EB 3- 6 | Cross connector/bridge, Number of positions: 3, Color: gray |
| 0201139 | EB 10- 6 | Cross connector/bridge, Number of positions: 10, Color: gray |
| 0201456 | FB 2- 6-EX | Cross connector/bridge, Number of positions: 2, Color: aluminum |
| 0201469 | FB 3- 6-EX | Cross connector/bridge, Number of positions: 3, Color: aluminum |
| 0201029 | FB 5- 6 | Cross connector/bridge, Number of positions: 5, Color: aluminum |
| 0201184 | FB 10- 6 | Cross connector/bridge, Number of positions: 10, Color: aluminum |
| 0201281 | FB 10- 6-EX | Cross connector/bridge, Number of positions: 10, Color: aluminum |
| 0201524 | FB 100- 6 | Cross connector/bridge, Number of positions: 100, Color: aluminum |
| 0203250 | FBI 10- 6 | Cross connector/bridge, Number of positions: 10, Color: silver |
| 0201650 | FBI 100- 6 | Cross connector/bridge, Number of positions: 100, Color: aluminum |
| 0201867 | FBI 20- 6 | Cross connector/bridge, Number of positions: 20, Color: aluminum |
| 1302338 | IS-K 4 | Bridge bar isolator, Color: gray |
| 0301505 | ISSBI 10- 6 | Switching jumper, Number of positions: 10, Color: silver |
| 0201485 | KB- 6-EX | Cross connector/bridge, Number of positions: 1, Color: silver |
| 0202280 | LB 10-6 BU | Cross connector/bridge, Number of positions: 10, Color: blue |
| 0202358 | LB 10-6 GY | Cross connector/bridge, Number of positions: 10, Color: gray |
| 1413230 | SBRN 2-7 | Cross connector/bridge, Color: silver |
| 2303239 | USBR 2-7 | Cross connector/bridge, Color: silver |
| 2305538 | USBRJ 2-7 | Cross connector/bridge, Number of positions: 2, Color: silver |

Marking

| | | |
|---------|-------------|---|
| 1004115 | WS 3- 6 | Warning plate, with 2 plastic screws, across 3 terminal blocks, pitch 6 mm |
| 1004209 | WS 4- 6 | Warning plate, with 2 plastic screws, across 4 terminal blocks, pitch 6 mm |
| 1004403 | WS 5- 6 | Warning plate, with 2 plastic screws, across 5 terminal blocks, pitch 6 mm |
| 1050499 | ZB 6:SO/CMS | Zack strip, 10-section, divisible, special printing, marking according to customer requirements |

Plug/Adapter

| | | |
|---------|-----------------|---|
| 0309523 | KSS 3- 6 | Short circuit connector, Number of positions: 3, Color: black |
| 0301547 | KSS 6 | Short circuit connector, Number of positions: 2, Color: black |
| 3001132 | PS-UK 2,5 B/E | Test plugs, Color: red |
| 3001239 | PS-UK 2,5 B/Z-6 | Test plugs, Color: red |
| 0601292 | PSB 3/10/4 | Female test connector, Color: silver |
| 0201304 | PSBJ 3/13/4 | Female test connector, Color: silver |
| 0201647 | RPS | Reducing plug, Color: gray |

UK 2,5 B Order No.: 3001035

<http://eshop.phoenixcontact.de/phoenix/treeViewClick.do?UID=3001035>

Address

PHOENIX CONTACT Deutschland GmbH
Flachmarktstr. 8
32825 Blomberg, Germany
Phone +49 5235 3 12000
Fax +49 5235 3 41200
<http://www.phoenixcontact.de>



© 2010 Phoenix Contact
Technical modifications reserved;