



Chipsmall Limited consists of a professional team with an average of over 10 year of expertise in the distribution of electronic components. Based in Hongkong, we have already established firm and mutual-benefit business relationships with customers from,Europe,America and south Asia,supplying obsolete and hard-to-find components to meet their specific needs.

With the principle of "Quality Parts,Customers Priority,Honest Operation,and Considerate Service",our business mainly focus on the distribution of electronic components. Line cards we deal with include Microchip,ALPS,ROHM,Xilinx,Pulse,ON,Everlight and Freescale. Main products comprise IC,Modules,Potentiometer,IC Socket,Relay,Connector.Our parts cover such applications as commercial,industrial, and automotives areas.

We are looking forward to setting up business relationship with you and hope to provide you with the best service and solution. Let us make a better world for our industry!



Contact us

Tel: +86-755-8981 8866 Fax: +86-755-8427 6832

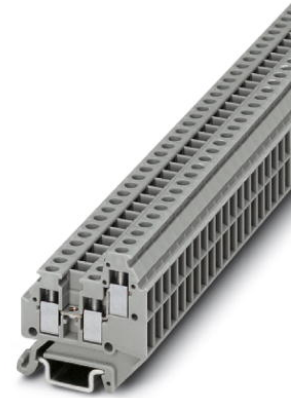
Email & Skype: info@chipsmall.com Web: www.chipsmall.com

Address: A1208, Overseas Decoration Building, #122 Zhenhua RD., Futian, Shenzhen, China



MT 1,5-TWIN

Order No.: 3001682



<http://eshop.phoenixcontact.de/phoenix/treeViewClick.do?UID=3001682>

Feed-through modular terminal block, Cross section: 0.14 mm² - 1.5 mm², AWG: 26 - 16, Connection type: Screw connection, Width: 4.2 mm, Color: gray, Mounting type: NS 15

Commercial data

EAN	4017918100858
Pack	50 pcs.
Customs tariff	85369010
Weight/Piece	0.003452 KG
Catalog page information	Page 429 (CL-2009)

Product notes

WEEE/RoHS-compliant since:
01/01/2003



<http://www.download.phoenixcontact.com>
Please note that the data given here has been taken from the online catalog. For comprehensive information and data, please refer to the user documentation. The General Terms and Conditions of Use apply to Internet downloads.

Technical data

General

Number of levels	2
Number of connections	3
Color	gray
Insulating material	PA

Inflammability class acc. to UL 94	V0
Dimensions	
Width	4.2 mm
Length	28 mm
Technical data	
Rated surge voltage	4 kV
Pollution degree	3
Surge voltage category	III
Insulating material group	I
Connection in acc. with standard	IEC 60947-7-1
Nominal current I_N	17.5 A (the maximum load current must not be exceeded by the total current of all connected conductors)
Nominal voltage U_N	400 V
Connection data	
Conductor cross section solid min.	0.14 mm ²
Conductor cross section solid max.	1.5 mm ²
Conductor cross section stranded min.	0.14 mm ²
Conductor cross section stranded max.	1.5 mm ²
Conductor cross section AWG/kcmil min.	26
Conductor cross section AWG/kcmil max	16
Conductor cross section stranded, with ferrule without plastic sleeve min.	0.25 mm ²
Conductor cross section stranded, with ferrule without plastic sleeve max.	0.75 mm ²
Conductor cross section stranded, with ferrule with plastic sleeve min.	0.25 mm ²
Conductor cross section stranded, with ferrule with plastic sleeve max.	0.75 mm ²
2 conductors with same cross section, solid min.	0.14 mm ²
2 conductors with same cross section, solid max.	0.5 mm ²
2 conductors with same cross section, stranded min.	0.14 mm ²
2 conductors with same cross section, stranded max.	0.5 mm ²
2 conductors with same cross section, stranded, ferrules without plastic sleeve, min.	0.25 mm ²

2 conductors with same cross section, stranded, ferrules without plastic sleeve, max.	0.34 mm ²
Type of connection	Screw connection
Stripping length	6 mm
Internal cylindrical gage	A1
Screw thread	M2
Tightening torque, min	0.22 Nm
Tightening torque max	0.25 Nm

Certificates / Approvals



Certification

BV, CCA, CSA, DNV, GL, GOST, KEMA, LR, UL

CSA

Nominal voltage U _N	300 V
Nominal current I _N	15 A
AWG/kcmil	28-14

UL

Nominal voltage U _N	300 V
Nominal current I _N	15 A
AWG/kcmil	30-14

Accessories

Item	Designation	Description
Assembly		
3002979	D-MT 1,5-TWIN	End cover, Length: 28 mm, Width: 1 mm, Color: gray
1401637	E/MBK	End bracket, width: 6.2 mm, color: gray
1401763	NS 15 AL PERF 2000MM	DIN rail, material: Aluminum, perforated, height 5.5 mm, width 15 mm, length: 2 m
1401682	NS 15 PERF 2000MM	DIN rail, material: steel, perforated, height 5.5 mm, width 15 mm, length: 2 m
1401695	NS 15 UNPERF 2000MM	DIN rail, material: Steel, unperforated, height 5.5 mm, width 15 mm, length: 2 m

Bridges

3001569	FBRN 4-4 N	Cross connector/bridge, Number of positions: 4, Color: aluminum
3001572	FBRN 5-4 N	Cross connector/bridge, Number of positions: 5, Color: aluminum
3001585	FBRN 6-4 N	Cross connector/bridge, Number of positions: 6, Color: aluminum
3001598	FBRN 7-4 N	Cross connector/bridge, Number of positions: 7, Color: aluminum
3001608	FBRN 8-4 N	Cross connector/bridge, Number of positions: 8, Color: aluminum
3001624	FBRN 10-4 N	Cross connector/bridge, Number of positions: 10, Color: silver
3001637	FBRN 20-4 N	Cross connector/bridge, Number of positions: 20, Color: aluminum

Marking

0803634	ZBFM 4:SO/CMS	Special printing, Zack marker sheet, flat, 100-section, divisible, marking according to customer requirements
---------	---------------	---

Tools

1205037	SZS 0,4X2,5	Screwdriver, bladed, matches all screw terminal blocks up to 1.5 mm ² connection cross section, blade: 0.4 x 2.5 mm
---------	-------------	--

Diagrams/Drawings

Circuit diagram



MT 1,5-TWIN Order No.: 3001682

<http://eshop.phoenixcontact.de/phoenix/treeViewClick.do?UID=3001682>

Address

PHOENIX CONTACT Deutschland GmbH
Flachmarktstr. 8
32825 Blomberg, Germany
Phone +49 5235 3 12000
Fax +49 5235 3 41200
<http://www.phoenixcontact.de>



© 2010 Phoenix Contact
Technical modifications reserved;