



Chipsmall Limited consists of a professional team with an average of over 10 year of expertise in the distribution of electronic components. Based in Hongkong, we have already established firm and mutual-benefit business relationships with customers from,Europe,America and south Asia,supplying obsolete and hard-to-find components to meet their specific needs.

With the principle of "Quality Parts,Customers Priority,Honest Operation,and Considerate Service",our business mainly focus on the distribution of electronic components. Line cards we deal with include Microchip,ALPS,ROHM,Xilinx,Pulse,ON,Everlight and Freescale. Main products comprise IC,Modules,Potentiometer,IC Socket,Relay,Connector.Our parts cover such applications as commercial,industrial, and automotives areas.

We are looking forward to setting up business relationship with you and hope to provide you with the best service and solution. Let us make a better world for our industry!



## Contact us

Tel: +86-755-8981 8866 Fax: +86-755-8427 6832

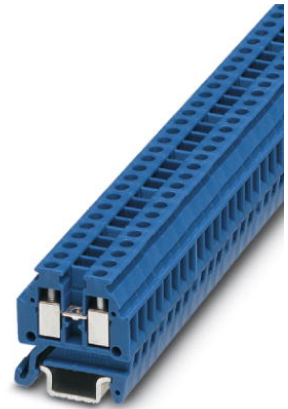
Email & Skype: info@chipsmall.com Web: www.chipsmall.com

Address: A1208, Overseas Decoration Building, #122 Zhenhua RD., Futian, Shenzhen, China




**MT 1,5 BU**

Order No.: 3003363

<http://eshop.phoenixcontact.de/phoenix/treeViewClick.do?UID=3003363>

Feed-through modular terminal block, Type of connection: Screw connection, Cross section: 0.14 mm<sup>2</sup> - 1.5 mm<sup>2</sup>, AWG 26 - 16, Width: 4.2 mm, Color: blue, Mounting type: NS 15

**Commercial data**

|                          |   |
|--------------------------|---|
| GTIN (EAN)               |  |
| sales group              | A100  |
| Pack                     | 50 pcs.   |
| Customs tariff           | 85369010  |
| Catalog page information | Page 428 (CL-2009)  |

**Product notes**

WEEE/RoHS-compliant since:  
01/01/2003



<http://www.download.phoenixcontact.com>  
Please note that the data given here has been taken from the online catalog. For comprehensive information and data, please refer to the user documentation. The General Terms and Conditions of Use apply to Internet downloads.

**Technical data****General**

|                       |      |
|-----------------------|------|
| Number of levels      | 1    |
| Number of connections | 2    |
| Color                 | blue |
| Insulating material   | PA   |

|  |   |
|--|---|
| Inflammability class acc. to UL 94   | V0  |
| <b>Dimensions</b>  |   |
| Width  | 4.2 mm  |
| Length   | 22 mm   |
| <b>Technical data</b>  |   |
| Maximum load current   | 17.5 A (with 1.5 mm <sup>2</sup> conductor cross section) |
| Rated surge voltage  | 4 kV  |
| Pollution degree   | 3   |
| Surge voltage category   | III   |
| Insulating material group  | I   |
| Connection in acc. with standard   | IEC 60947-7-1   |
| Nominal current I <sub>N</sub>   | 17.5 A  |
| Nominal voltage U <sub>N</sub>   | 400 V   |
| Open side panel  | ja  |
| <b>Connection data</b>   |   |
| Conductor cross section solid min.   | 0.14 mm <sup>2</sup>                                      |
| Conductor cross section solid max.   | 1.5 mm <sup>2</sup>                                       |
| Conductor cross section stranded min.                                      | 0.14 mm <sup>2</sup>                                      |
| Conductor cross section stranded max.                                      | 1.5 mm <sup>2</sup>                                       |
| Conductor cross section AWG/kcmil min.                                     | 26  |
| Conductor cross section AWG/kcmil max                                      | 16  |
| Conductor cross section stranded, with ferrule without plastic sleeve min. | 0.25 mm <sup>2</sup>                                      |
| Conductor cross section stranded, with ferrule without plastic sleeve max. | 0.75 mm <sup>2</sup>                                      |
| Conductor cross section stranded, with ferrule with plastic sleeve min.    | 0.25 mm <sup>2</sup>                                      |
| Conductor cross section stranded, with ferrule with plastic sleeve max.    | 0.75 mm <sup>2</sup>                                      |
| 2 conductors with same cross section, solid min.                           | 0.14 mm <sup>2</sup>                                      |
| 2 conductors with same cross section, solid max.                           | 0.5 mm <sup>2</sup>                                       |
| 2 conductors with same cross section, stranded min.                        | 0.14 mm <sup>2</sup>                                      |
| 2 conductors with same cross section, stranded max.                        | 0.5 mm <sup>2</sup>                                       |

|   |                      |
|---|----------------------|
| 2 conductors with same cross section, stranded, ferrules without plastic sleeve, min. | 0.25 mm <sup>2</sup> |
| 2 conductors with same cross section, stranded, ferrules without plastic sleeve, max. | 0.34 mm <sup>2</sup> |
| Type of connection  | Screw connection     |
| Stripping length  | 6 mm                 |
| Internal cylindrical gage   | A1                   |
| Screw thread  | M2                   |
| Tightening torque, min  | 0.22 Nm              |
| Tightening torque max   | 0.25 Nm              |

### Certificates / Approvals



Certification

CCA, DNV, GOST, KEMA

### Accessories

| Item            | Designation          | Description   |
|-----------------|----------------------|---|
| <b>Assembly</b> |                      |   |
| 3025529         | D-MT 1,5 BU          | End cover, Length: 22 mm, Width: 1 mm, Color: blue                                |
| 1401637         | E/MBK                | End clamp, width: 6.2 mm, color: gray   |
| 1401763         | NS 15 AL PERF 2000MM | DIN rail, material: Aluminum, perforated, height 5.5 mm, width 15 mm, length: 2 m |
| 1401682         | NS 15 PERF 2000MM    | DIN rail, material: steel, perforated, height 5.5 mm, width 15 mm, length: 2 m    |
| 1401695         | NS 15 UNPERF 2000MM  | DIN rail, material: Steel, unperforated, height 5.5 mm, width 15 mm, length: 2 m  |

### Bridges

|         |            |   |
|---------|------------|---|
| 3001569 | FBRN 4-4 N | Fixed bridge, Number of positions: 4, Color: aluminum |
| 3001572 | FBRN 5-4 N | Fixed bridge, Number of positions: 5, Color: aluminum |
| 3001585 | FBRN 6-4 N | Fixed bridge, Number of positions: 6, Color: aluminum |
| 3001598 | FBRN 7-4 N | Fixed bridge, Number of positions: 7, Color: aluminum |
| 3001608 | FBRN 8-4 N | Fixed bridge, Number of positions: 8, Color: aluminum |

|         |             |  |
|---------|-------------|--|
| 3001624 | FBRN 10-4 N | Fixed bridge, Number of positions: 10, Color: silver   |
| 3001637 | FBRN 20-4 N | Fixed bridge, Number of positions: 20, Color: aluminum |

**Marking**

|         |               |   |
|---------|---------------|---|
| 0803634 | ZBFM 4:SO/CMS | Special printing, Zack marker sheet, flat, 100-section, divisible, marking according to customer requirements |
|---------|---------------|---|

**Tools**

|         |                 |   |
|---------|-----------------|---|
| 1205037 | SZS 0,4X2,5 VDE | Screwdriver, bladed, VDE insulated, size: 0.4 x 2.5 x 80 mm, 2-component grip, with non-slip grip |
|---------|-----------------|---|

MT 1,5 BU Order No.: 3003363

<http://eshop.phoenixcontact.de/phoenix/treeViewClick.do?UID=3003363>

---

**Address**

PHOENIX CONTACT Inc., USA  
586 Fulling Mill Road  
Middletown, PA 17057, USA  
Phone (800) 888-7388  
Fax (717) 944-1625  
<http://www.phoenixcon.com>



© 2010 Phoenix Contact  
Technical modifications reserved;