



Chipsmall Limited consists of a professional team with an average of over 10 year of expertise in the distribution of electronic components. Based in Hongkong, we have already established firm and mutual-benefit business relationships with customers from,Europe,America and south Asia,supplying obsolete and hard-to-find components to meet their specific needs.

With the principle of “Quality Parts,Customers Priority,Honest Operation,and Considerate Service”,our business mainly focus on the distribution of electronic components. Line cards we deal with include Microchip,ALPS,ROHM,Xilinx,Pulse,ON,Everlight and Freescale. Main products comprise IC,Modules,Potentiometer,IC Socket,Relay,Connector.Our parts cover such applications as commercial,industrial, and automotives areas.

We are looking forward to setting up business relationship with you and hope to provide you with the best service and solution. Let us make a better world for our industry!



Contact us

Tel: +86-755-8981 8866 Fax: +86-755-8427 6832

Email & Skype: info@chipsmall.com Web: www.chipsmall.com

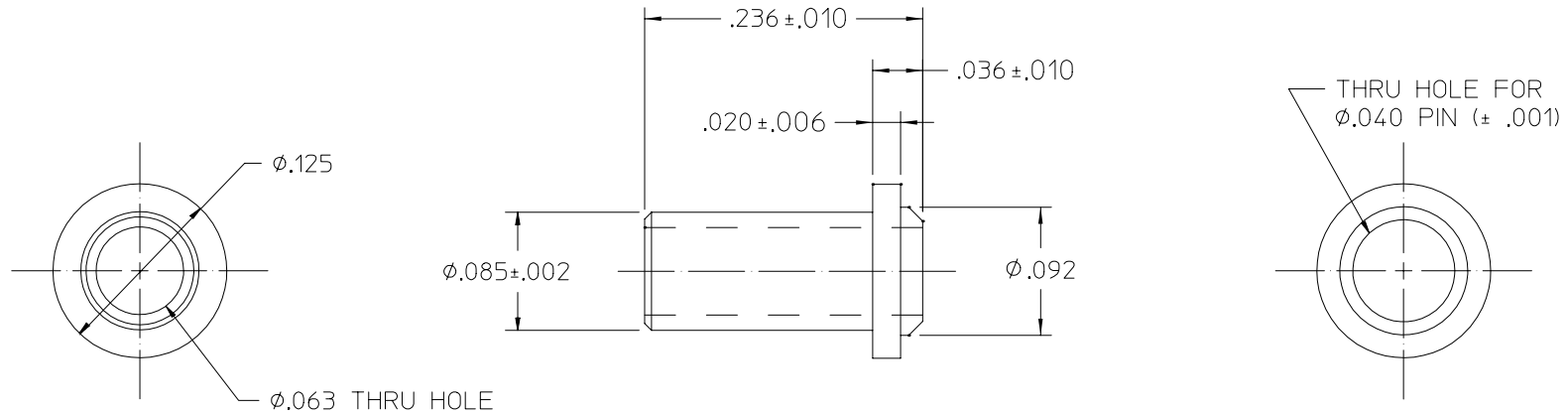
Address: A1208, Overseas Decoration Building, #122 Zhenhua RD., Futian, Shenzhen, China



VICOR CONFIDENTIAL


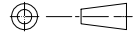
THIS DOCUMENT AND THE DATA DISCLOSED
HEREIN OR HEREWITH IS NOT TO BE REPRODUCED,
USED, OR DISCLOSED IN WHOLE OR IN PART
TO ANYONE WITHOUT PERMISSION OF VICOR CORP.

REV.	DESCRIPTION	DATE	APPROVED
1	RELEASED PER E050355 LEK	11/17/05	EF
2	REVISED PER E064280 PEI	02/23/06	ECF
3	REVISED PER E064291 PEI	03/20/06	MH



NOTES:

1. MATERIAL: BRASS QQ-B-626 ALLOY 360 1/2 HARD; ELECTRO-TIN PER ASTM B 545, OVER .0001 NICKEL PLATING, WITH BERYLLIUM COPPER SPRING INSERT CAPTIVATED.
2. CONCORD P/N 09-9002-1-06 OR APPROVED EQUIV.
3. PARTS SHALL MEET SOLDERABILITY REQUIREMENTS PER MIL-STD-202, METHOD 208 AFTER EXPOSURE TO 8 HRS STEAM AGING PER MIL-STD-883, METHOD 2003.
4. RoHS COMPLIANT, LEAD FREE PER CST-0001 LATEST REVISION.

DRAWN BY <i>P.E.IENI</i>		DATE <i>05/18/05</i>		 SOCKET, PIN .040 DIA. PC	
<small>UNLESS OTHERWISE SPECIFIED DIMENSIONS ARE IN INCHES- TOLERANCES ARE: FRACTIONS DECIMALS ANGLES +1/64 XX= +.01 ±1° .XXX=+.005</small>					
THIRD ANGLE PROJECTION 		SIZE B	FSCM NO. 67131	DWG NO 30074	REV 3
DO NOT SCALE DRAWING			SCALE NONE	SHEET 1 OF 1	