

Chipsmall Limited consists of a professional team with an average of over 10 year of expertise in the distribution of electronic components. Based in Hongkong, we have already established firm and mutual-benefit business relationships with customers from,Europe,America and south Asia,supplying obsolete and hard-to-find components to meet their specific needs.

With the principle of “Quality Parts,Customers Priority,Honest Operation,and Considerate Service”,our business mainly focus on the distribution of electronic components. Line cards we deal with include Microchip,ALPS,ROHM,Xilinx,Pulse,ON,Everlight and Freescale. Main products comprise IC,Modules,Potentiometer,IC Socket,Relay,Connector.Our parts cover such applications as commercial,industrial, and automotives areas.

We are looking forward to setting up business relationship with you and hope to provide you with the best service and solution. Let us make a better world for our industry!



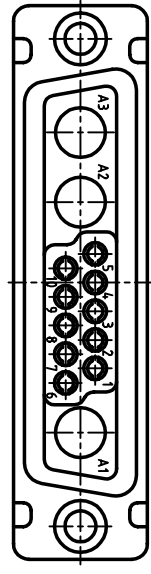
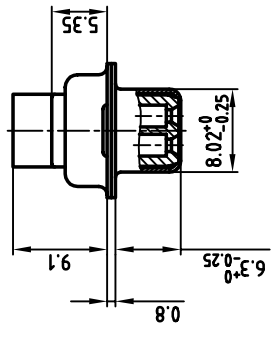
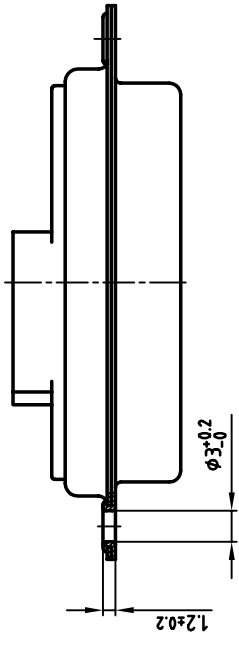
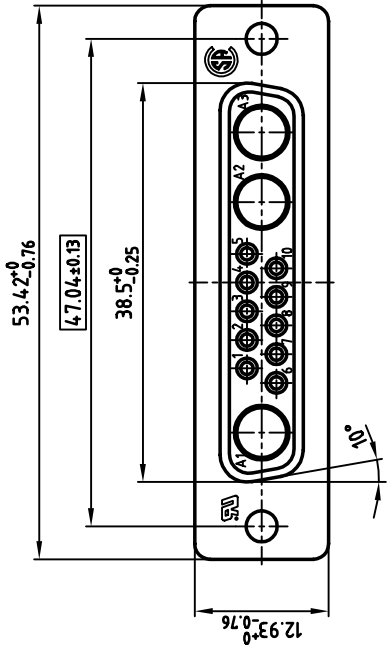
Contact us

Tel: +86-755-8981 8866 Fax: +86-755-8427 6832

Email & Skype: info@chipsmall.com Web: www.chipsmall.com

Address: A1208, Overseas Decoration Building, #122 Zhenhua RD., Futian, Shenzhen, China

used for: D-SUB COMBINATION CRIMP



NOTES:

1. METALSHELLS: STEEL; min. 320µ" TIN
2. INSULATORS: PBT GF UL 94 V-0, BLACK
3. = CRITICAL DIMENSION: SPC

Directive 2002/95/EC
„RoHS“
Compliant

DO NOT ALTER CAD DRAWING BY HAND		OWNERSHIP AND COPYRIGHT OF CONEC GMBH		THIS DRAWING MAY NOT BE COPIED OR REPRODUCED IN ANY WAY, AND MAY NOT BE PASSED ON TO A THIRD PARTY WITHOUT WRITTEN PERMISSION	
CONEC CORPORATION	BRAMPTON, ONTARIO	tolerance	2:1	scale:	SEE NOTES
rev.	description	date	name	2002	date
				drawn	29.01.
				appd.	30.01. E. Mickenbecker
				norm	
				6-old	
			dwg no: 13K1A472A AutoCAD 2000 DIN-A 3 sh: 1/1		
title: D-SUB COMBINATION FEMALE CRIMP STYLE 13W3S			part no: 3013W3SXXK99A10X		