



Chipsmall Limited consists of a professional team with an average of over 10 year of expertise in the distribution of electronic components. Based in Hongkong, we have already established firm and mutual-benefit business relationships with customers from,Europe,America and south Asia,supplying obsolete and hard-to-find components to meet their specific needs.

With the principle of “Quality Parts,Customers Priority,Honest Operation,and Considerate Service”,our business mainly focus on the distribution of electronic components. Line cards we deal with include Microchip,ALPS,ROHM,Xilinx,Pulse,ON,Everlight and Freescale. Main products comprise IC,Modules,Potentiometer,IC Socket,Relay,Connector.Our parts cover such applications as commercial,industrial, and automotives areas.

We are looking forward to setting up business relationship with you and hope to provide you with the best service and solution. Let us make a better world for our industry!



## Contact us

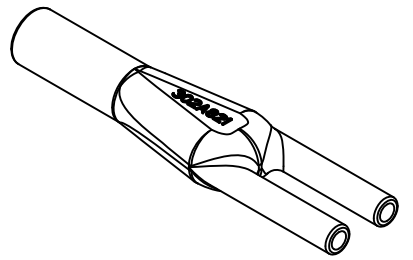
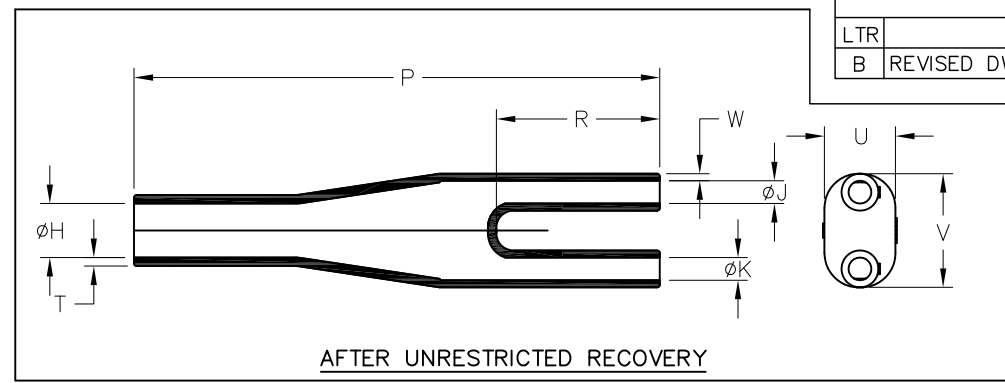
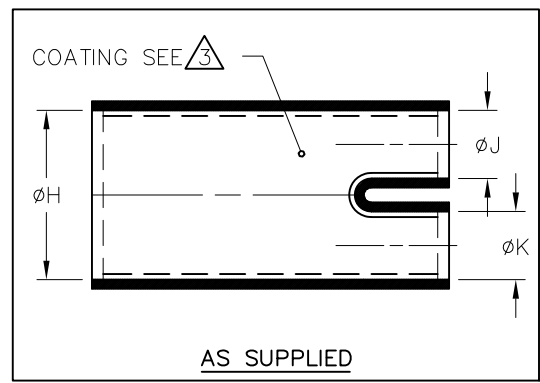
Tel: +86-755-8981 8866 Fax: +86-755-8427 6832

Email & Skype: info@chipsmall.com Web: www.chipsmall.com

Address: A1208, Overseas Decoration Building, #122 Zhenhua RD., Futian, Shenzhen, China



REVISIONS		
LTR	DESCRIPTION	DATE
B	REVISED DWG PER ECO-11-002021	01/28/2011

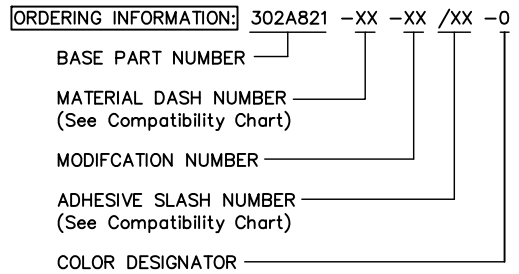


NOTES:

- ALL DIMENSIONS ARE IN:  $\frac{\text{INCHES}}{\text{MILLIMETERS}}$
- DIMENSION APPEARING IN TABLE ARE AS FOLLOWS:  
a - AS SUPPLIED  
b - AFTER UNRESTRICTED RECOVERY

3. COATING (ADHESIVE) IS OPTIONAL. AS SUPPLIED DIMENSIONS APPEARING IN TABLE ARE FOR UNCOATED PARTS. WHEN COATING IS ADDED, ENTRY DIAMETER WILL BE REDUCED BY .06 MAX.

PART DESCRIPTION	H		J & K		P	R	T	W	U	V
	MIN a	MAX b	MIN a	MAX b	$\pm 10\%$ b	$\pm 10\%$ b	$\pm 20\%$ b	$\pm 20\%$ b	REF b	REF b
302A821	1.30 [33,0]	.37 [9,4]	.69 [17,5]	.16 [4,1]	3.70 [94,0]	1.18 [29,9]	.06 [1,6]	.05 [1,3]	.50 [12,7]	.80 [20,3]



If this document is printed it becomes uncontrolled. Check for the latest revision

MATERIAL DASH No.	MATERIAL DESCRIPTION	RT SPEC	ADHESIVE COATING SLASH No.	ADHESIVE COATING "S" No.
-3	POLYOLEFIN, SEMI-RIGID	RT-301	/42, /86	S-1017, S-1048
-4	POLYOLEFIN, FLEXIBLE	RT-1304	/42, /86	S-1017, S-1048
-25	ELASTOMER, FLUID RESISTANT	RW-2070	/225	S-1206

UNLESS OTHERWISE SPECIFIED DIMENSIONS ARE INCHES. METRIC DIMENSIONS ARE IN BRACKETS.

DECIMAL TOLERANCES  
.XXX  $\pm$  0.005 [0.13 mm]  
.XX  $\pm$  0.01 [0.25 mm]  
.X  $\pm$  0.1 [0.50 mm]

ANGLE TOLERANCE  
.X  $\pm$  1 DEG.

THIRD ANGLE PROJECTION

TYCO ELECTRONICS RESERVES THE RIGHT TO AMEND THIS DRAWING AT ANY TIME. USERS SHOULD EVALUATE THE SUITABILITY OF THE PRODUCT FOR THEIR APPLICATION.

© 2010-2011 Tyco Electronics Corporation. All rights reserved.

DRAWN G.Rositano 09/13/2010  
APPROVED D.Hurrell 09/13/2010

CUSTOMER DRAWING

**Tyco Electronics** Raychem Molded Parts  
305 Constitution Dr  
Menlo Park, CA 94025

TITLE  
**TRANSITION, 3 ENTRY**

SIZE B CODE IDENT. NO. 06090 DWG. NO. 302A821

DO NOT SCALE THIS DRAWING SHEET 1 OF 1