



Chipsmall Limited consists of a professional team with an average of over 10 year of expertise in the distribution of electronic components. Based in Hongkong, we have already established firm and mutual-benefit business relationships with customers from,Europe,America and south Asia,supplying obsolete and hard-to-find components to meet their specific needs.

With the principle of “Quality Parts,Customers Priority,Honest Operation,and Considerate Service”,our business mainly focus on the distribution of electronic components. Line cards we deal with include Microchip,ALPS,ROHM,Xilinx,Pulse,ON,Everlight and Freescale. Main products comprise IC,Modules,Potentiometer,IC Socket,Relay,Connector.Our parts cover such applications as commercial,industrial, and automotives areas.

We are looking forward to setting up business relationship with you and hope to provide you with the best service and solution. Let us make a better world for our industry!



Contact us

Tel: +86-755-8981 8866 Fax: +86-755-8427 6832

Email & Skype: info@chipsmall.com Web: www.chipsmall.com

Address: A1208, Overseas Decoration Building, #122 Zhenhua RD., Futian, Shenzhen, China

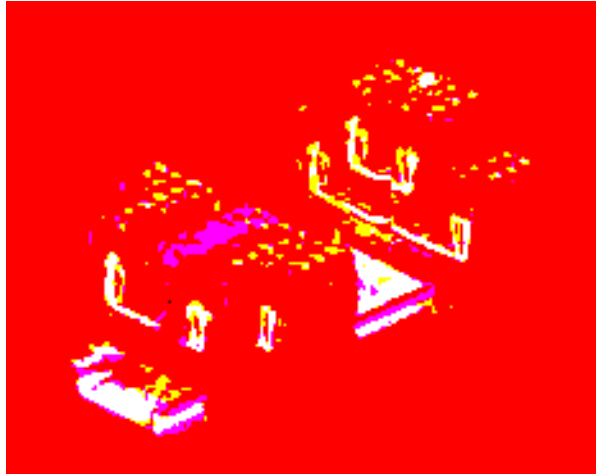


Spring Cage Component Terminal Blocks

Thanks to the different versions of double-level diode and light indicator terminal blocks, it is possible to carry out a great variety of switching tasks:

In a minimum of space the following circuits can be realized:

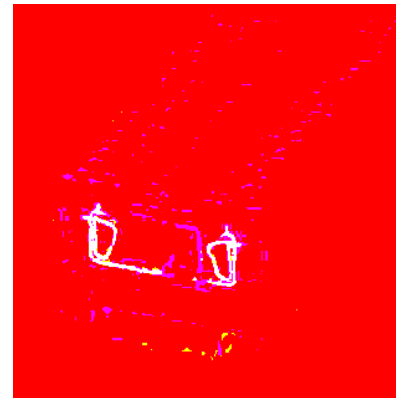
- damping diode,
- lamp test,
- message and fault message.



Spring Cage Component Terminal Block with Diode

ST 2,5-DIO/L-R

ST 2,5-DIO/R-L



(IEC) [mm ²]	rigid solid	flexible stranded	AWG	I [A]	U [V]
IEC 60 947-7-1	0.2-4	0.2-2.5	24-12	1 ¹⁾	500

Integrated: Diode 1N 4007
Reverse voltage: 1300 V
Maximum continuous current: 1 A

- 1) The max. current is determined by the diode.
2) Further colors on request.

Technical data

Spring cage terminal block, with integrated diode
1N 4007, conducting direction from left terminal width 5.2 to right, for mounting on

Spring cage terminal block, with integrated diode
1N 4007, conducting direction from right terminal width 5.2 to left, for mounting on

(1) End cover	gray	
(2) Insulating stop sleeve , prevents unintentional clamping of the insulation in the case of smaller cross sections Cross section range:	0.2 mm ² 0.25-0.5 mm ² 0.75-1 mm ²	white gray black
(3) Plug-in bridge , for cross-connections in the terminal center	2-pos. 3-pos. 4-pos. 5-pos. 10-pos. 20-pos.	
(4) Partition plate , for visual and electrical separation of terminal groups, 2 mm thick		
(5) Test adapter , for 4 mm Ø test connector PS and 4 mm Ø safety test connectors, making contact in the bridge shaft		
(6) 2.3 mm Ø test connector ²⁾ , consisting of metal part and red insulating sleeve		
(7) Reducing plug		
(8) Warning cover , for the operating shafts of the "mini-spring" ST spring cage terminal blocks		
(9) Screwdriver , for actuating the tension spring		
(10) Zack marker sheet , flat, 120-section, for labeling the outer marker grooves	white	
(11) Zack strip , 10-section, for labeling in the terminal center and on the plug-in bridges	white	

Dimensions

Width / length / end cover width	[mm]
Height (NS 35:7.5 / NS 35:15)	[mm]

Technical data in accordance with IEC/ DIN VDE

Maximum load current/ cross section	[A] / [mm ²]
Rated surge voltage / contamination class	[kV] / -
Surge voltage category / insulation material group	- / -

Capacity connection

Stranded with ferrule with plastic sleeve	[mm ²]
Stranded with ferrule without plastic sleeve	[mm ²]
Stranded with TWIN ferrule with plastic sleeve	[mm ²]
Stripping length	[mm]

Internal cylindrical gauge (IEC 60 947-1)

Insulating material

Inflammability class in acc. with UL 94

Type	Order No.	Pcs. Pkt.
ST 2,5-DIO/L-R	30 36 26 2	50
ST 2,5-DIO/R-L	30 36 51 8	50
D-ST 2,5	30 30 41 7	50
ISH 2,5/0,2	30 02 84 3	50
ISH 2,5/0,5	30 02 85 6	50
ISH 2,5/1	30 02 86 9	50
FBS 2-5	I_{max} : 24 A 30 30 16 1	10
FBS 3-5	24 A 30 30 17 4	10
FBS 4-5	24 A 30 30 18 7	10
FBS 5-5	24 A 30 30 19 0	10
FBS 10-5	24 A 30 30 21 3	10
FBS 20-5	24 A 30 30 22 6	10
ATP-ST 4	30 30 72 1	50
PAI 4	30 30 92 5	10
MPS-RD	02 01 55 3	10
RPS	02 01 64 7	10
WST 2,5	30 30 94 1	10
SZF 1 - 0,6 x 3,5	12 04 51 7	10
ZBFM 5 /WH:UNPRINTED	08 03 59 5	10
ZB 5:UNPRINTED	10 50 00 4	10

5.2 / 48.5 / 2.2

36.5 / 44

1) / 4

8 / 3

III / I

0.25 - 2.5

0.25 - 2.5

0.5

10

A 3

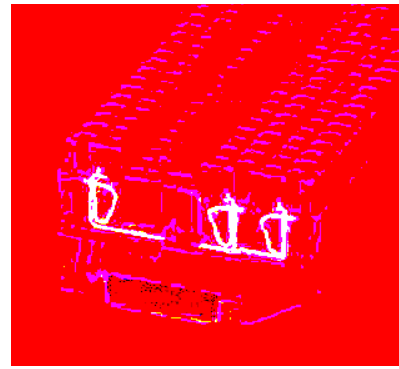
PA

V0

Spring Cage Component Terminal Block with Diode

ST 2,5-TWIN-DIO/L-R

ST 2,5-TWIN-DIO/R-L



(IEC) [mm ²]	rigid solid	flexible stranded	AWG	I [A]	U [V]
IEC 60 947-7-1	0.2-4	0.2-2.5	24-12	1 ¹⁾	500
Integrated: Diode 1N 4007					
Reverse voltage: 1300 V					
Maximum continuous current: 1 A					
1) The max. current is determined by the diode.					
2) Further colors on request.					

Technical data

Spring cage terminal block, with integrated diode
1N 4007, conducting direction from left terminal width 5.2 to right, for mounting on

Spring cage terminal block, with integrated diode
1N 4007, conducting direction from right terminal width 5.2 to left, for mounting on

(1) End cover	gray	
(2) Segment cover , for covering of multi-conductor terminals when two-conductor terminals are connected in series	gray	
(3) Insulating stop sleeve , prevents unintentional clamping of the insulation in the case of smaller cross sections Cross section range:	0.2 mm ² 0.25-0.5 mm ² 0.75-1 mm ²	white gray black
(4) Plug-in bridge , for cross-connections in the terminal center	2-pos. 3-pos. 4-pos. 5-pos. 10-pos. 20-pos.	
(5) Partition plate , for visual and electrical separation of terminal groups, 2 mm thick		
(6) Test adapter , for 4 mm ∅ test connector PS and 4 mm ∅ safety test connectors, making contact in the bridge shaft		
(7) 2.3 mm ∅ test connector ²⁾ , consisting of metal part and red insulating sleeve		
(8) Reducing plug		
(9) Screwdriver , for actuating the tension spring		
(10) Zack marker sheet , flat, 120-section, for labeling the outer marker grooves	white	
(11) Zack strip , 10-section, for labeling in the terminal center and on the plug-in bridges	white	

Dimensions

Width / length / end cover width	[mm]
Height (NS 35:7.5 / NS 35:15)	[mm]

Technical data in accordance with IEC/DIN VDE

Maximum load current/ cross section	[A] / [mm ²]
Rated surge voltage / contamination class	[kV] / -
Surge voltage category / insulation material group	- / -

Capacity connection

Stranded with ferrule with plastic sleeve	[mm ²]
Stranded with ferrule without plastic sleeve	[mm ²]
Stranded with TWIN ferrule with plastic sleeve	[mm ²]
Stripping length	[mm]

Internal cylindrical gauge (IEC 60 947-1)

Insulating material	
Inflammability class in acc. with UL 94	

Type	Order No.	Pcs. Pkt.
ST 2,5-TWIN-DIO/L-R	30 36 24 6	50
ST 2,5-TWIN-DIO/R-L	30 36 52 1	50
D-ST 2,5-TWIN	30 30 48 8	50
DS-ST 2,5	30 36 60 2	10
ISH 2,5/0,2	30 02 84 3	50
ISH 2,5/0,5	30 02 85 6	50
ISH 2,5/1	30 02 86 9	50
FBS 2-5	$I_{max}: 24 A$ 30 30 16 1	10
FBS 3-5	24 A 30 30 17 4	10
FBS 4-5	24 A 30 30 18 7	10
FBS 5-5	24 A 30 30 19 0	10
FBS 10-5	24 A 30 30 21 3	10
FBS 20-5	24 A 30 30 22 6	10
ATP 4-TWIN	30 30 78 9	50
PAI 4	30 30 92 5	10
MPS-RD	02 01 55 3	10
RPS	02 01 64 7	10
SZF 1 - 0,6 x 3,5	12 04 51 7	10
ZBFM 5 /WH:UNPRINTED	08 03 59 5	10
ZB 5:UNPRINTED	10 50 00 4	10

5.2 / 60.5 / 2.2

36.5 / 44

1) / 4

8 / 3

III / I

0.25 - 2.5

0.25 - 2.5

0.5

10

A 3

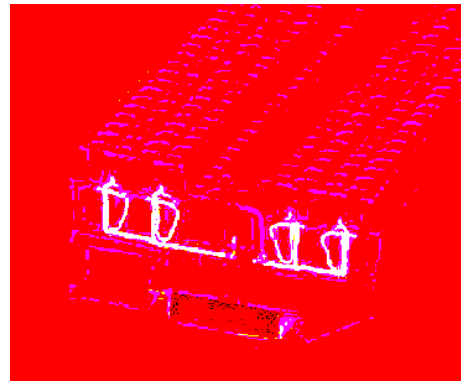
PA

V0

Spring Cage Component Terminal Block with Diode

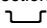
ST 2,5-QUATTRO-DIO/L-R

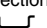
ST 2,5-QUATTRO-DIO/R-L

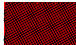


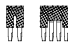








(IEC) [mm ²]	rigid solid	flexible stranded	AWG	I [A]	U [V]
IEC 60 947-7-1	0.2-4	0.2-2.5	24-12	1 ¹⁾	500
Integrated: Diode 1N 4007					
Reverse voltage: 1300 V					
Maximum continuous current: 1 A					
1) The max. current is determined by the diode.					
2) Further colors on request.					

Technical data

Spring cage terminal block, with integrated diode 1N 4007, conducting direction from left terminal width 5.2 to right, for mounting on 

Spring cage terminal block, with integrated diode 1N 4007, conducting direction from right terminal width 5.2 to left, for mounting on 

(1) End cover	gray	
(2) Segment cover , for covering of multi-conductor terminals when two-conductor terminals are connected in series	gray	
(3) Insulating stop sleeve , prevents unintentional clamping of the insulation in the case of smaller cross sections		
Cross section range:	0.2 mm ²	white
	0.25-0.5 mm ²	gray
	0.75-1 mm ²	black
(4) Plug-in bridge , for cross-connections in the terminal center	2-pos. 3-pos. 4-pos. 5-pos. 10-pos. 20-pos.	
(5) Partition plate , for visual and electrical separation of terminal groups, 2 mm thick		
(6) Test adapter , for 4 mm \varnothing test connector PS and 4 mm \varnothing safety test connectors, making contact in the bridge shaft		
(7) 2.3 mm \varnothing test connector ²⁾ , consisting of metal part and red insulating sleeve		
(8) Reducing plug		
(9) Screwdriver , for actuating the tension spring		
(10) Zack marker sheet , flat, 120-section, for labeling the outer marker grooves	white	
(11) Zack strip , 10-section, for labeling in the terminal center and on the plug-in bridges	white	

Dimensions

Width / length / end cover width	[mm]	5.2 / 72 / 2.2
Height (NS 35:7.5 / NS 35:15)	[mm]	36.5 / 44

Technical data in accordance with IEC/DIN VDE

Maximum load current/ cross section	[A] / [mm ²]	1 ¹⁾ / 4
Rated surge voltage / contamination class	[kV] / -	8 / 3
Surge voltage category / insulation material group	- / -	III / I

Capacity connection

Stranded with ferrule with plastic sleeve	[mm ²]	0.25 - 2.5
Stranded with ferrule without plastic sleeve	[mm ²]	0.25 - 2.5
Stranded with TWIN ferrule with plastic sleeve	[mm ²]	0.5
Stripping length	[mm]	10

Internal cylindrical gauge (IEC 60 947-1)

Insulating material		A 3
Inflammability class in acc. with UL 94		PA
		V0


Type	Order No.	Pcs. Pkt.
ST 2,5-QUATTRO-DIO/L-R	30 36 23 3	50
ST 2,5-QUATTRO-DIO/R-L	30 36 53 4	50
D-ST 2,5-QUATTRO	30 30 51 4	50
DS-ST 2,5	30 36 60 2	10
ISH 2,5/0,2	30 02 84 3	50
ISH 2,5/0,5	30 02 85 6	50
ISH 2,5/1	30 02 86 9	50
FBS 2-5	$I_{max.}: 24 A$ 30 30 16 1	10
FBS 3-5	24 A 30 30 17 4	10
FBS 4-5	24 A 30 30 18 7	10
FBS 5-5	24 A 30 30 19 0	10
FBS 10-5	24 A 30 30 21 3	10
FBS 20-5	24 A 30 30 22 6	10
ATP 4-QUATTRO	30 30 81 5	50
PAI 4	30 30 92 5	10
MPS-RD	02 01 55 3	10
RPS	02 01 64 7	10
SZF 1 - 0,6 x 3,5	12 04 51 7	10
ZBFM 5 /WH:UNPRINTED	08 03 59 5	10
ZB 5:UNPRINTED	10 50 00 4	10

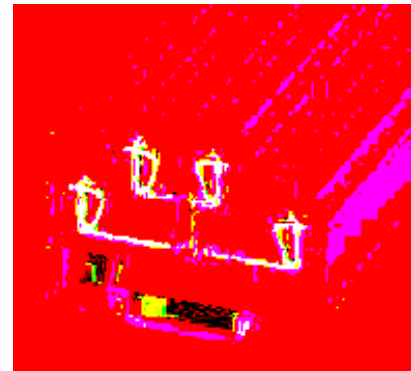
Spring Cage Component Terminal Block with Diode

STTB 2,5-DIO/O-U


STTB 2,5-DIO/U-O


(IEC) [mm ²]	rigid solid	flexible stranded	AWG	I [A]	U [V]
Connection data	0.2-4	0.2-2.5	24-12	26	500

Integrated: Diode 1N 4007
 Reverse voltage: 1300 V
 Maximum continuous current: 1 A





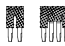
Technical data


Spring cage terminal block, with integrated diode
 1N 4007, conducting direction from top terminal width 5.2
 to bottom, for mounting on 


Spring cage terminal block, with integrated diode
 1N 4007, conducting direction from bottom terminal width 5.2
 to top, for mounting on 


(1) **End cover** gray 


(2) **Insulating stop sleeve**, prevents unintentional clamping
 of the insulation in the case of smaller cross sections
 Cross section range: 0.2 mm² white
 0.25-0.5 mm² gray
 0.75-1 mm² black 

(3) **Plug-in bridge**, for 2-pos. cross-connections in the terminal center
 3-pos. 
 4-pos.
 5-pos.
 10-pos.
 20-pos.

(4) **Partition plate**, for visual and electrical separation
 of terminal groups, 2 mm thick 

(5) **Test adapter**, for 4 mm Ø test connector PS
 and 4 mm Ø safety test connectors, making contact in the bridge shaft 

(6) **Double marker carrier**, snaps into double level spring cage terminal blocks, STTB 2,5 / 4,
 labeling with ZB 5 and ZBFM 5 

(7) **Warning cover**, for the operating shafts of the "mini-spring"
 ST spring cage terminal blocks 

(8) **Screwdriver**, for actuating the tension spring 

(9) **Zack marker sheet**, flat, 120-section, for labeling the outer marker grooves white

Dimensions

Width / length / end cover width	[mm]
Height (NS 35:7.5 / NS 35:15)	[mm]

Technical data in accordance with IEC/DIN VDE

Maximum load current/ cross section	[A] / [mm ²]
Rated surge voltage / contamination class	[kV] / -
Surge voltage category / insulation material group	- / -

Capacity connection

Stranded with ferrule with plastic sleeve	[mm ²]
Stranded with ferrule without plastic sleeve	[mm ²]
Stranded with TWIN ferrule with plastic sleeve	[mm ²]

Stripping length [mm]

Internal cylindrical gauge (IEC 60 947-1)

Insulating material

Inflammability class in acc. with UL 94

Approval data (UL and CSA/CUL)

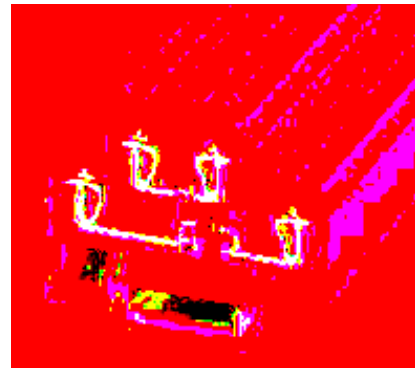
Nom. voltage / nom. current / conduc. sizes	UL: [V] / [A] / AWG
	CSA/CUL: [V] / [A] / AWG

Type	Order No.	Pcs. Pkt.
STTB 2,5-DIO/O-U	30 31 55 5	50
STTB 2,5-DIO/U-O	30 31 56 3	50
D-STTB 2,5	30 30 45 9	50
ISH 2,5/0,2	30 02 84 3	50
ISH 2,5/0,5	30 02 85 6	50
ISH 2,5/1	30 02 86 9	50
FBS 2-5 $I_{max}: 20 A$	30 30 16 1	10
FBS 3-5 $20 A$	30 30 17 4	10
FBS 4-5 $20 A$	30 30 18 7	10
FBS 5-5 $20 A$	30 30 19 0	10
FBS 10-5 $20 A$	30 30 21 3	10
FBS 20-5 $20 A$	30 30 22 6	10
ATP-STTB 4	30 30 74 7	50
PAI 4	30 30 92 5	10
STP 5-2	08 00 96 7	10
WST 2,5	30 30 94 1	10
SZF 1 - 0,6 x 3,5	12 04 51 7	10
ZBFM 5 /WH:UNPRINTED	08 03 59 5	10


5.2 / 67.5 / 2.2
47.5 / 55
26 / 4
6 / 3
III / I
0.25 - 2.5
0.25 - 2.5
0.5
10
A 3
PA
V0
300 / 20 / 26 - 12
300 / 20 / 26 - 12

Spring Cage Component Terminal Block with Diode

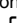



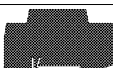




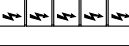

STTB 2,5-DIO/UL-UR



(IEC) [mm ²]	rigid solid	flexible stranded	AWG	I [A]	U [V]
Connection data	0.2-4	0.2-2.5	24-12	26	500

Integrated: Diode 1N 4007
Reverse voltage: 1300 V
Maximum continuous current: 1 A


Technical data

Spring cage terminal block , with integrated diode 1N 4007, conducting direction from left to right, for mounting on 		terminal width 5.2
(1) End cover	gray	
(2) Insulating stop sleeve , prevents unintentional clamping of the insulation in the case of smaller cross sections	Cross section range:	
	0.2 mm ²	white
	0.25-0.5 mm ²	gray
	0.75-1 mm ²	black
(3) Plug-in bridge , for cross-connections in the terminal center	2-pos. 3-pos. 4-pos. 5-pos. 10-pos. 20-pos.	
(4) Partition plate , for visual and electrical separation of terminal groups, 2 mm thick		
(5) Test adapter , for 4 mm  test connector PS and 4 mm  safety test connectors, making contact in the bridge shaft		
(6) Double marker carrier , snaps into double level spring cage terminal blocks, STTB 2,5 / 4, labeling with ZB 5 and ZBFM 5		
(7) Warning cover , for the operating shafts of the "mini-spring" ST spring cage terminal block		
(8) Screwdriver , for actuating the tension spring		
(9) Zack marker sheet , flat, 120-section, for labeling the outer marker grooves	white	

Dimensions

Width / length / end cover width	[mm]	5.2 / 67.5 / 2.2
Height (NS 35:7.5 / NS 35:15)	[mm]	47.5 / 55

Technical data in accordance with IEC/DIN VDE

Maximum load current/ cross section	[A] / [mm ²]	26 / 4
Rated surge voltage / contamination class	[kV] / -	6 / 3
Surge voltage category / insulation material group	- / -	III / I

Capacity connection

Stranded with ferrule with plastic sleeve	[mm ²]	0.25 - 2.5
Stranded with ferrule without plastic sleeve	[mm ²]	0.25 - 2.5
Stranded with TWIN ferrule with plastic sleeve	[mm ²]	0.5
Stripping length	[mm]	10
Internal cylindrical gauge (IEC 60 947-1)		A 3
Insulating material		PA
Inflammability class in acc. with UL 94		V0

Approval data (UL and CSA/CUL)

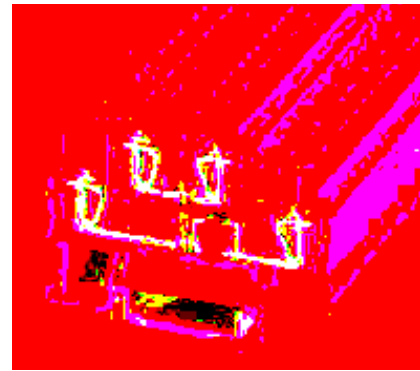
Nom. voltage / nom. current / conduc. sizes	UL: [V] / [A] / AWG	300 / 20 / 26 - 12
	CSA/CUL: [V] / [A] / AWG	300 / 20 / 26 - 12

Type	Order No.	Pcs. Pkt.	
STTB 2,5-DIO/UL-UR	30 31 57 1	50	
D-STTB 2,5	30 30 45 9	50	
ISH 2,5/0,2	30 02 84 3	50	
ISH 2,5/0,5	30 02 85 6	50	
ISH 2,5/1	30 02 86 9	50	
FBS 2-5	I_{max} : 20 A	30 30 16 1	10
FBS 3-5	20 A	30 30 17 4	10
FBS 4-5	20 A	30 30 18 7	10
FBS 5-5	20 A	30 30 19 0	10
FBS 10-5	20 A	30 30 21 3	10
FBS 20-5	20 A	30 30 22 6	10
ATP-STTB 4	30 30 74 7	50	
PAI 4	30 30 92 5	10	
STP 5-2	08 00 96 7	10	
WST 2,5	30 30 94 1	10	
SZF 1 - 0,6 x 3,5	12 04 51 7	10	
ZBFM 5 /WH:UNPRINTED	08 03 59 5	10	

Spring Cage Component Terminal Block with Diodes

STTB 2,5-2 DIO/O-UL/UR-UL

STTB 2,5-2 DIO/O-UL/O-UR



(IEC) [mm ²]	rigid solid	flexible stranded	AWG	I [A]	U [V]
Connection data	0.2-4	0.2-2.5	24-12	26	500

Integrated: Diode 1N 4007
 Reverse voltage: 1300 V
 Maximum continuous current: 1 A

Technical data

Spring cage terminal block, with two integrated diodes
 1N 4007, conducting direction from terminal width 5.2
 top to bottom left, and from bottom right
 to bottom left, for mounting on

Spring cage terminal block, with two integrated diodes
 1N 4007, conducting direction from terminal width 5.2
 top to bottom left, and from top
 to bottom right, for mounting on

(1) **End cover** gray

(2) **Insulating stop sleeve**, prevents unintentional clamping
 of the insulation in the case of smaller cross sections
 Cross section range: 0.2 mm² white
 0.25-0.5 mm² gray
 0.75-1 mm² black

(3) **Plug-in bridge**, for 2-pos.
 cross-connections in the 3-pos.
 terminal center 4-pos.
 5-pos.
 10-pos.
 20-pos.

(4) **Partition plate**, for visual and electrical separation
 of terminal groups, 2 mm thick

(5) **Test adapter**, for 4 mm test connector PS
 and 4 mm safety test connectors,
 making contact in the bridge shaft

(6) **Double marker carrier**, snaps into
 double level spring cage terminal blocks, STTB 2,5 / 4,
 labeling with ZB 5 and ZBFM 5

(7) **Warning cover**, for the
 operating shafts of the "mini-spring"
 ST spring cage terminal blocks

(8) **Screwdriver**, for
 actuating the tension spring

(9) **Zack marker sheet**, flat, 120-section,
 for labeling the outer marker grooves white

Dimensions

Width / length / end cover width	[mm]	5.2 / 67.5 / 2.2
Height (NS 35:7.5 / NS 35:15)	[mm]	47.5 / 55

Technical data in accordance with IEC/DIN VDE

Maximum load current/ cross section	[A] / [mm ²]	26 / 4
Rated surge voltage / contamination class	[kV] / -	6 / 3
Surge voltage category / insulation material group	- / -	III / I

Capacity connection

Stranded with ferrule with plastic sleeve	[mm ²]	0.25 - 2.5
Stranded with ferrule without plastic sleeve	[mm ²]	0.25 - 2.5
Stranded with TWIN ferrule with plastic sleeve	[mm ²]	0.5
Stripping length	[mm]	10

Internal cylindrical gauge (IEC 60 947-1)

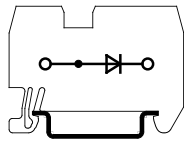
Insulating material		A 3
Inflammability class in acc. with UL 94		PA
		V0

Approval data (UL and CSA/CUL)

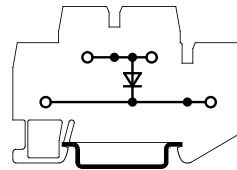
Nom. voltage / nom. current / conduc. sizes	UL: [V] / [A] / AWG	300 / 20 / 26 - 12
	CSA/CUL: [V] / [A] / AWG	300 / 20 / 26 - 12

Type	Order No.	Pcs. Pkt.	
STTB 2,5-2 DIO/O-UL/UR-UL	30 31 58 4	50	
STTB 2,5-2 DIO/O-UL/O-UR	30 31 59 7	50	
D-STTB 2,5	30 30 45 9	50	
ISH 2,5/0,2	30 02 84 3	50	
ISH 2,5/0,5	30 02 85 6	50	
ISH 2,5/1	30 02 86 9	50	
FBS 2-5	I_{max} : 20 A	30 30 16 1	10
FBS 3-5	20 A	30 30 17 4	10
FBS 4-5	20 A	30 30 18 7	10
FBS 5-5	20 A	30 30 19 0	10
FBS 10-5	20 A	30 30 21 3	10
FBS 20-5	20 A	30 30 22 6	10
ATP-STTB 4	30 30 74 7	50	
PAI 4	30 30 92 5	10	
STP 5-2	08 00 96 7	10	
WST 2,5	30 30 94 1	10	
SZF 1 - 0,6 x 3,5	12 04 51 7	10	
ZBFM 5 /WH:UNPRINTED	08 03 59 5	10	

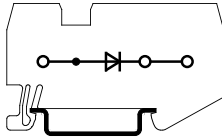
Technical data



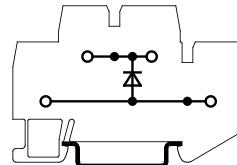
ST 2,5-DIO/L-R



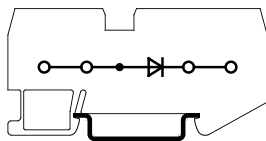
STTB 2,5-DIO/O-U



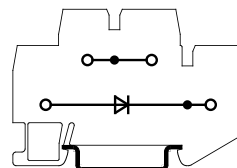
ST 2,5-TWIN-DIO/L-R



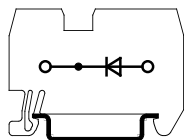
STTB 2,5-DIO/U-O



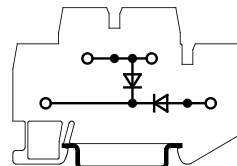
ST 2,5-QUATTRO-DIO/L-R



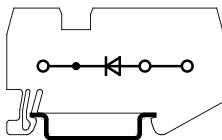
STTB 2,5-DIO/UL-UR



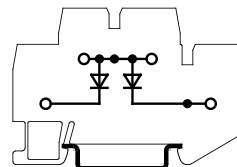
ST 2,5-DIO/R-L



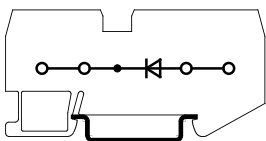
STTB 2,5-2 DIO/O-UL/UR-UL



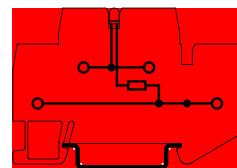
ST 2,5-TWIN-DIO/R-L



STTB 2,5-2 DIO/O-UL/O-UR



ST 2,5-QUATTRO-DIO/R-L



STTB 2,5-LA...