



Chipsmall Limited consists of a professional team with an average of over 10 year of expertise in the distribution of electronic components. Based in Hongkong, we have already established firm and mutual-benefit business relationships with customers from,Europe,America and south Asia,supplying obsolete and hard-to-find components to meet their specific needs.

With the principle of “Quality Parts,Customers Priority,Honest Operation,and Considerate Service”,our business mainly focus on the distribution of electronic components. Line cards we deal with include Microchip,ALPS,ROHM,Xilinx,Pulse,ON,Everlight and Freescale. Main products comprise IC,Modules,Potentiometer,IC Socket,Relay,Connector.Our parts cover such applications as commercial,industrial, and automotives areas.

We are looking forward to setting up business relationship with you and hope to provide you with the best service and solution. Let us make a better world for our industry!



## Contact us

Tel: +86-755-8981 8866 Fax: +86-755-8427 6832

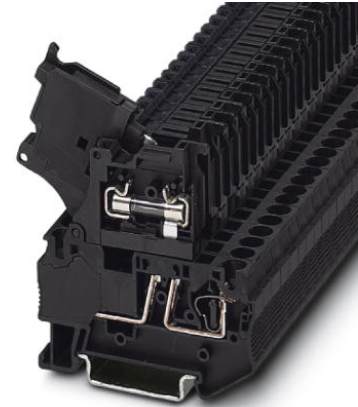
Email & Skype: info@chipsmall.com Web: www.chipsmall.com

Address: A1208, Overseas Decoration Building, #122 Zhenhua RD., Futian, Shenzhen, China



## ST 4-HESI (5X20)

Order No.: 3036369

<http://eshop.phoenixcontact.de/phoenix/treeViewClick.do?UID=3036369>

Fuse terminal block for assembly on NS 35, for 5 x 20 cartridge fuse inserts

### Commercial data

|                          |                    |
|--------------------------|--------------------|
| EAN                      | 4017918890476      |
| Pack                     | 50 pcs.            |
| Customs tariff           | 85369010           |
| Weight/Piece             | 0.01473 KG         |
| Catalog page information | Page 113 (CL-2009) |

### Product notes

WEEE/RoHS-compliant since:  
01/01/2003

<http://www.download.phoenixcontact.com>  
Please note that the data given here has been taken from the online catalog. For comprehensive information and data, please refer to the user documentation. The General Terms and Conditions of Use apply to Internet downloads.

### Technical data

#### General

|                                    |       |
|------------------------------------|-------|
| Number of levels                   | 1     |
| Number of connections              | 2     |
| Color                              | black |
| Insulating material                | PA    |
| Inflammability class acc. to UL 94 | V0    |

### Dimensions

|                  |         |
|------------------|---------|
| Width            | 6.2 mm  |
| Length           | 61.5 mm |
| Height NS 35/7,5 | 62.5 mm |
| Height NS 35/15  | 70 mm   |

### Technical data

|                                  |                                                                                                                |
|----------------------------------|----------------------------------------------------------------------------------------------------------------|
| Fuse                             | G / 5 x 20                                                                                                     |
| Fuse type                        | Glass                                                                                                          |
| Rated surge voltage              | 6 kV                                                                                                           |
| Pollution degree                 | 3                                                                                                              |
| Surge voltage category           | III                                                                                                            |
| Insulating material group        | I                                                                                                              |
| Connection in acc. with standard | IEC 60947-7-3                                                                                                  |
| Nominal current $I_N$            | 6.3 A (if used as disconnect terminal block. With fuse, the current is determined by the fuse used.)           |
| Nominal voltage $U_N$            | 500 V (if used as fuse terminal block)                                                                         |
|                                  | 500 V (if used as disconnect terminal block)                                                                   |
| Power loss                       | $\geq 1.6$ W (With single arrangement of the fuse terminal block in the event of overload)                     |
|                                  | $\geq 1.6$ W (With interconnected arrangement of several fuse terminal blocks in the event of overload)        |
|                                  | $\geq 4$ W (With single arrangement of the fuse terminal block in the event of a short-circuit)                |
|                                  | $\geq 2.5$ W (With interconnected arrangement of several fuse terminal blocks in the event of a short-circuit) |

### Connection data

|                                                                            |                      |
|----------------------------------------------------------------------------|----------------------|
| Conductor cross section solid min.                                         | 0.08 mm <sup>2</sup> |
| Conductor cross section solid max.                                         | 6 mm <sup>2</sup>    |
| Conductor cross section stranded min.                                      | 0.08 mm <sup>2</sup> |
| Conductor cross section stranded max.                                      | 4 mm <sup>2</sup>    |
| Conductor cross section AWG/kcmil min.                                     | 28                   |
| Conductor cross section AWG/kcmil max                                      | 10                   |
| Conductor cross section stranded, with ferrule without plastic sleeve min. | 0.14 mm <sup>2</sup> |
| Conductor cross section stranded, with ferrule without plastic sleeve max. | 4 mm <sup>2</sup>    |

|                                                                                         |                        |
|-----------------------------------------------------------------------------------------|------------------------|
| Conductor cross section stranded, with ferrule with plastic sleeve min.                 | 0.14 mm <sup>2</sup>   |
| Conductor cross section stranded, with ferrule with plastic sleeve max.                 | 4 mm <sup>2</sup>      |
| 2 conductors with same cross section, stranded, TWIN ferrules with plastic sleeve, min. | 0.5 mm <sup>2</sup>    |
| 2 conductors with same cross section, stranded, TWIN ferrules with plastic sleeve, max. | 1 mm <sup>2</sup>      |
| Type of connection                                                                      | Spring-cage connection |
| Stripping length                                                                        | 10 mm                  |
| Internal cylindrical gage                                                               | A4                     |

**Certificates / Approvals**



Certification CB, CSA, CUL, GL, GOST, KEMA, UL

**CSA**

|                                |       |
|--------------------------------|-------|
| Nominal voltage U <sub>N</sub> | 300 V |
| Nominal current I <sub>N</sub> | 6.3 A |
| AWG/kcmil                      | 28-10 |

**CUL**

|                                |       |
|--------------------------------|-------|
| Nominal voltage U <sub>N</sub> | 300 V |
| Nominal current I <sub>N</sub> | 10 A  |
| AWG/kcmil                      | 28-10 |

**UL**

|                                |       |
|--------------------------------|-------|
| Nominal voltage U <sub>N</sub> | 300 V |
| Nominal current I <sub>N</sub> | 10 A  |
| AWG/kcmil                      | 28-10 |

**Accessories**

| Item            | Designation | Description                                                             |
|-----------------|-------------|-------------------------------------------------------------------------|
| <b>Assembly</b> |             |                                                                         |
| 3030721         | ATP-ST 4    | Partition plate, Length: 61 mm, Width: 2 mm, Height: 42 mm, Color: gray |



|                |                         |                                                                                                                                                                                     |
|----------------|-------------------------|-------------------------------------------------------------------------------------------------------------------------------------------------------------------------------------|
| 3004207        | VS                      | Connection pin, Length: 1000 mm, Color: white                                                                                                                                       |
| <b>Bridges</b> |                         |                                                                                                                                                                                     |
| 3030336        | FBS 2-6                 | Cross connector/bridge, Number of positions: 2, Color: red                                                                                                                          |
| 3030242        | FBS 3-6                 | Cross connector/bridge, Number of positions: 3, Color: red                                                                                                                          |
| 3030255        | FBS 4-6                 | Cross connector/bridge, Number of positions: 4, Color: red                                                                                                                          |
| 3030349        | FBS 5-6                 | Cross connector/bridge, Number of positions: 5, Color: red                                                                                                                          |
| 3030271        | FBS 10-6                | Cross connector/bridge, Number of positions: 10, Color: red                                                                                                                         |
| 3030365        | FBS 20-6                | Cross connector/bridge, Number of positions: 20, Color: red                                                                                                                         |
| 3032224        | FBS 50-6                | Cross connector/bridge, Number of positions: 50, Color: red                                                                                                                         |
| <b>General</b> |                         |                                                                                                                                                                                     |
| 5023901        | UK 5-HESI-DM            | Contact metal in the form of a glass tube fuse insert 5 x 20 mm                                                                                                                     |
| <b>Marking</b> |                         |                                                                                                                                                                                     |
| 0800190        | ZB 5 /VT-100:UNBEDRUCKT | Zack strip, unprinted: 10-section, for individual labeling with M-PEN, ZB-T or CMS system, large batch, sufficient for labeling 1000 terminal blocks, color: violet                 |
| 1050004        | ZB 5 :UNBEDRUCKT        | Zack strip, unprinted, 10-section, for individual labeling with M-PEN, ZB-T or CMS system, pack is sufficient for 100 terminal blocks, for a terminal width of 5.2 mm, color: White |
| 1050127        | ZB 5,LGS:1-9            | Zack strip, printed horizontally: 9-section, with the numbers 1 - 9, color: white                                                                                                   |
| 1050017        | ZB 5,LGS:FORTL.ZAHLEN   | Zack strip, 10-section, printed horizontally: with the numbers, 1-10, 11-20 etc. up to 991-1000, color: white                                                                       |
| 1050033        | ZB 5,LGS:GLEICHE ZAHLEN | Zack marker strip, labeled horizontally: 10-section, with identical numbers, 1/1/1, 2/2/2 etc. up to 500/500/500, color: white                                                      |
| 1050415        | ZB 5,LGS:L1-N,PE        | Zack strip, printed horizontally, strips with 10 labels, L1, L2, L3, N, PE, L1, L2, L3, N, PE, color: white                                                                         |
| 1050020        | ZB 5,QR:FORTL.ZAHLEN    | Zack strip, 10-section, printed vertically: with consecutive numbers, 1-10, 11-20 a.s.o. up to 991-1000, color: white                                                               |
| 5061536        | ZB 5/BU-100:UNBEDRUCKT  | Zack strip, unprinted: 10-section, for individual labeling with M-PEN, ZB-T or CMS system, large batch, sufficient for labeling 1000 terminal blocks, color: blue                   |
| 5061497        | ZB 5/GN-100:UNBEDRUCKT  | Zack strip, unprinted: 10-section, for individual labeling with M-PEN, ZB-T or CMS system, large batch, sufficient for labeling 1000 terminal blocks, color: green                  |
| 1050211        | ZB 5/OG,LGS: 10-100     | Zack strip, printed horizontally: 10-section, with the numbers 10/20/30-100, (for decade labeling), color: orange                                                                   |
| 5061471        | ZB 5/RD-100:UNBEDRUCKT  | Zack strip, unprinted: 10-section, for individual labeling with M-PEN, ZB-T or CMS system, large batch, sufficient for labeling 1000 terminal blocks, color: red                    |

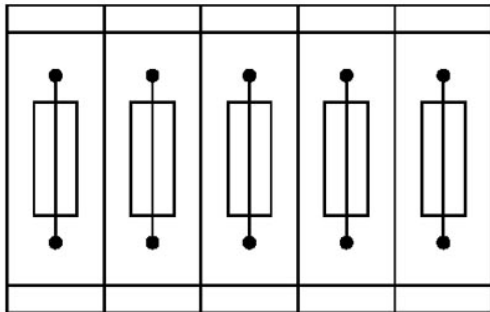
|         |                        |                                                                                                                                                                                                      |
|---------|------------------------|------------------------------------------------------------------------------------------------------------------------------------------------------------------------------------------------------|
| 5060906 | ZB 5/WH-100:UNBEDRUCKT | Zack strip, unprinted: 10-section, for individual labeling with M-PEN, ZB-T or CMS system, large batch, sufficient for labeling 1000 terminal blocks, for a terminal width of 5.2 mm, color: White   |
| 5061510 | ZB 5/YE-100:UNBEDRUCKT | Zack strip, unprinted: 10-section, for individual labeling with M-PEN, ZB-T or CMS system, large batch, sufficient for labeling 1000 terminal blocks, color: yellow                                  |
| 1050295 | ZB 5:SO/CMS            | Zack strip, 10-section, divisible, special printing, marking according to customer requirements                                                                                                      |
| 0807193 | ZBFM 6/OG:UNBEDRUCKT   | Zack marker sheet, flat, unprinted: 100-section, 10 strips à 10 markers, sufficient for 100 terminal blocks, for all terminal blocks, pitch 6.2 mm, labeling with M-PEN or CMS system, color: orange |
| 0803618 | ZBFM 6/WH:UNBEDRUCKT   | Zack marker sheet, flat, unprinted: 100-section, 10 strips à 10 markers, sufficient for 100 terminal blocks, for all terminal blocks, pitch 6.2 mm, labeling with M-PEN or CMS system, color: white  |
| 0803650 | ZBFM 6:SO/CMS          | Special printing, Zack marker sheet, flat, 100-section, divisible, marking according to customer requirements                                                                                        |

**Tools**

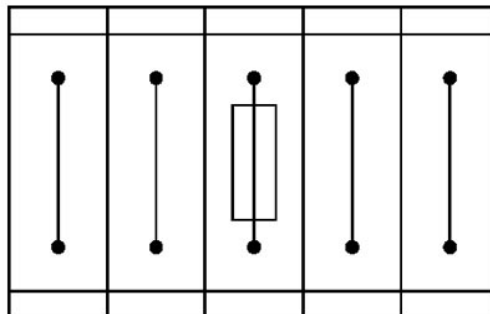
|         |               |                                                       |
|---------|---------------|-------------------------------------------------------|
| 1204517 | SZF 1-0,6X3,5 | Screwdriver, blade: 0.6 x 3.5 x 100 mm, length 180 mm |
|---------|---------------|-------------------------------------------------------|

**Diagrams/Drawings**

Application drawing

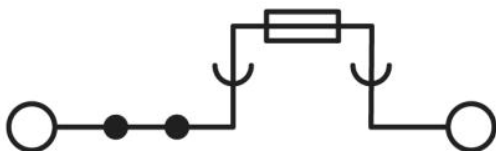


Fuse terminal blocks in interconnected arrangement, block consisting of 5 fuse terminal blocks



Fuse terminal block in single arrangement, block consisting of one fuse terminal block and 4 feed-through terminal blocks

Circuit diagram



**Address**

PHOENIX CONTACT Deutschland GmbH  
Flachmarktstr. 8  
32825 Blomberg, Germany  
Phone +49 5235 3 12000  
Fax +49 5235 3 41200  
<http://www.phoenixcontact.de>



© 2010 Phoenix Contact  
Technical modifications reserved;