



Chipsmall Limited consists of a professional team with an average of over 10 year of expertise in the distribution of electronic components. Based in Hongkong, we have already established firm and mutual-benefit business relationships with customers from,Europe,America and south Asia,supplying obsolete and hard-to-find components to meet their specific needs.

With the principle of “Quality Parts,Customers Priority,Honest Operation,and Considerate Service”,our business mainly focus on the distribution of electronic components. Line cards we deal with include Microchip,ALPS,ROHM,Xilinx,Pulse,ON,Everlight and Freescale. Main products comprise IC,Modules,Potentiometer,IC Socket,Relay,Connector.Our parts cover such applications as commercial,industrial, and automotives areas.

We are looking forward to setting up business relationship with you and hope to provide you with the best service and solution. Let us make a better world for our industry!



## Contact us

Tel: +86-755-8981 8866 Fax: +86-755-8427 6832

Email & Skype: info@chipsmall.com Web: www.chipsmall.com

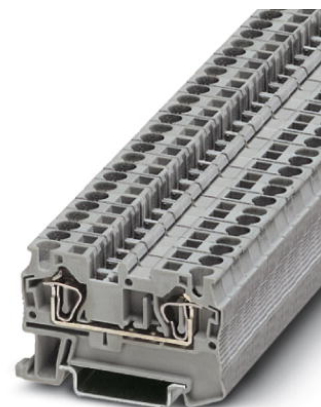
Address: A1208, Overseas Decoration Building, #122 Zhenhua RD., Futian, Shenzhen, China



## ST 4 OG


Order No.: 3037135

The illustration shows version ST 4 in gray

<http://eshop.phoenixcontact.de/phoenix/treeViewClick.do?UID=3037135>

Feed-through modular terminal block, Type of connection: Spring-cage connection, Cross section: 0.08 mm<sup>2</sup> - 6 mm<sup>2</sup>, AWG 28 - 10, Width: 6.2 mm, Color: orange, Mounting type: NS 35/7.5, NS 35/15

### Commercial data

|                          |   |
|--------------------------|---|
| GTIN (EAN)               |  |
| sales group              | A600  |
| Pack                     | 50 pcs.   |
| Customs tariff           | 85369010  |
| Catalog page information | Page 75 (CL-2009)   |

### Product notes

WEEE/RoHS-compliant since:  
01/01/2003

<http://www.download.phoenixcontact.com>  
Please note that the data given here has been taken from the online catalog. For comprehensive information and data, please refer to the user documentation. The General Terms and Conditions of Use apply to Internet downloads.

### Technical data

#### General

|                       |        |
|-----------------------|--------|
| Number of levels      | 1      |
| Number of connections | 2      |
| Color                 | orange |
| Insulating material   | PA     |

|                                    |    |
|------------------------------------|----|
| Inflammability class acc. to UL 94 | V0 |
|------------------------------------|----|

**Dimensions**

|                  |         |
|------------------|---------|
| Width            | 6.2 mm  |
| Length           | 56 mm   |
| Height NS 35/7.5 | 36.5 mm |
| Height NS 35/15  | 44 mm   |

**Technical data**

|                                  |   |
|----------------------------------|---|
| Maximum load current             | 40 A (with 6 mm <sup>2</sup> conductor cross section) |
| Rated surge voltage              | 8 kV  |
| Pollution degree                 | 3   |
| Surge voltage category           | III   |
| Insulating material group        | I   |
| Connection in acc. with standard | IEC 60947-7-1   |
| Nominal current I <sub>N</sub>   | 32 A  |
| Nominal voltage U <sub>N</sub>   | 800 V   |
| Open side panel                  | ja  |

**Connection data**

|   |                        |
|---|------------------------|
| Conductor cross section solid min.  | 0.08 mm <sup>2</sup>   |
| Conductor cross section solid max.  | 6 mm <sup>2</sup>      |
| Conductor cross section stranded min.   | 0.08 mm <sup>2</sup>   |
| Conductor cross section stranded max.   | 4 mm <sup>2</sup>      |
| Conductor cross section AWG/kcmil min.  | 28                     |
| Conductor cross section AWG/kcmil max   | 10                     |
| Conductor cross section stranded, with ferrule without plastic sleeve min.              | 0.14 mm <sup>2</sup>   |
| Conductor cross section stranded, with ferrule without plastic sleeve max.              | 4 mm <sup>2</sup>      |
| Conductor cross section stranded, with ferrule with plastic sleeve min.                 | 0.14 mm <sup>2</sup>   |
| Conductor cross section stranded, with ferrule with plastic sleeve max.                 | 4 mm <sup>2</sup>      |
| 2 conductors with same cross section, stranded, TWIN ferrules with plastic sleeve, min. | 0.5 mm <sup>2</sup>    |
| 2 conductors with same cross section, stranded, TWIN ferrules with plastic sleeve, max. | 1 mm <sup>2</sup>      |
| Type of connection  | Spring-cage connection |

|                           |       |
|---------------------------|-------|
| Stripping length          | 10 mm |
| Internal cylindrical gage | A4    |

### Certificates / Approvals



Certification: ABS, BV, CB, CSA, CUL, DNV, GL, GOST, KR, LR, NK, UL, VDE-PZI

Certification Ex: IECEX, KEMA-EX

### Accessories

| Item            | Designation                 | Description  |
|-----------------|-----------------------------|--|
| <b>Assembly</b> |                             |  |
| 3030721         | ATP-ST 4                    | Partition plate, Length: 61 mm, Width: 2 mm, Height: 42 mm, Color: gray  |
| 3022218         | CLIPFIX 35                  | Snap-on end bracket, for 35 mm NS 35/7.5 or NS 35/15 DIN rail, can be fitted with Zack strip ZB 8 and ZB 8/27, terminal strip marker KLM 2 and KLM, width: 9.5 mm, color: gray |
| 3030420         | D-ST 4                      | End cover, Length: 56 mm, Width: 2.2 mm, Height: 36.5 mm, Color: gray  |
| 1201442         | E/UK                        | End clamp, for assembly on NS 32 or NS 35/7.5 DIN rail   |
| 0801762         | NS 35/ 7,5 CU UNPERF 2000MM | DIN rail, material: Copper, unperforated, height 7.5 mm, width 35 mm, length: 2 m  |
| 0801733         | NS 35/ 7,5 PERF 2000MM      | DIN rail, material: Steel, galvanized and passivated with a thick layer, perforated, height 7.5 mm, width 35 mm, length: 2 m   |
| 0801681         | NS 35/ 7,5 UNPERF 2000MM    | DIN rail, material: Steel, unperforated, height 7.5 mm, width 35 mm, length: 2 m   |
| 1201756         | NS 35/15 AL UNPERF 2000MM   | DIN rail, deep-drawn, high profile, unperforated, 1.5 mm thick, material: Aluminum, height 15 mm, width 35 mm, length 2 m  |
| 1201895         | NS 35/15 CU UNPERF 2000MM   | DIN rail, material: Copper, unperforated, 1.5 mm thick, height 15 mm, width 35 mm, length: 2 m   |
| 1201730         | NS 35/15 PERF 2000MM        | DIN rail, material: Steel, perforated, height 15 mm, width 35 mm, length: 2 m  |
| 1201714         | NS 35/15 UNPERF 2000MM      | DIN rail, material: Steel, unperforated, height 15 mm, width 35 mm, length: 2 m  |
| 1201798         | NS 35/15-2,3 UNPERF 2000MM  | DIN rail, material: Steel, unperforated, 2.3 mm thick, height 15 mm, width 35 mm, length: 2 m  |

**Bridges**

|         |          |   |
|---------|----------|---|
| 3030336 | FBS 2-6  | Plug-in bridge, Number of positions: 2, Color: red  |
| 3030242 | FBS 3-6  | Plug-in bridge, Number of positions: 3, Color: red  |
| 3030255 | FBS 4-6  | Plug-in bridge, Number of positions: 4, Color: red  |
| 3030349 | FBS 5-6  | Plug-in bridge, Number of positions: 5, Color: red  |
| 3030271 | FBS 10-6 | Plug-in bridge, Number of positions: 10, Color: red |
| 3030365 | FBS 20-6 | Plug-in bridge, Number of positions: 20, Color: red |

**Marking**

|         |               |   |
|---------|---------------|---|
| 3030954 | WST 4         | Warning cover, 5-pos., for terminal width: 6.2 mm   |
| 1050499 | ZB 6:SO/CMS   | Zack strip, 10-section, divisible, special printing, marking according to customer requirements               |
| 0803650 | ZBFM 6:SO/CMS | Special printing, Zack marker sheet, flat, 100-section, divisible, marking according to customer requirements |

**Plug/Adapter**

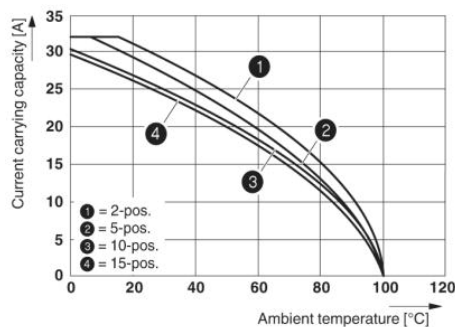
|         |           |                                 |
|---------|-----------|---------------------------------|
| 3002885 | ISH 4/0,5 | Insulating sleeve, Color: gray  |
| 3002898 | ISH 4/1,0 | Insulating sleeve, Color: black |
| 0201744 | MPS-MT    | Test plugs                      |
| 3030925 | PAI-4     | Test adapter, Color: gray       |
| 3030996 | PS-6      | Test adapter, Color: red        |
| 0201647 | RPS       | Reducing plug, Color: gray      |

**Tools**

|         |               |   |
|---------|---------------|---|
| 1204517 | SZF 1-0,6X3,5 | Actuation tool, for ST terminal blocks, also suitable for use as a bladed screwdriver, size: 0.6 x 3.5 x 100 mm, 2-component grip, with non-slip grip |
|---------|---------------|---|

**Diagrams/Drawings**

## Diagram



The figure shows the derating curve of the ST 4... terminal block in connection with the SP 4 connector

**Address**

PHOENIX CONTACT Deutschland GmbH  
Flachmarktstr. 8  
32825 Blomberg, Germany  
Phone +49 5235 3 12000  
Fax +49 5235 3 41200  
<http://www.phoenixcontact.de>



© 2011 Phoenix Contact  
Technical modifications reserved;