



Chipsmall Limited consists of a professional team with an average of over 10 year of expertise in the distribution of electronic components. Based in Hongkong, we have already established firm and mutual-benefit business relationships with customers from,Europe,America and south Asia,supplying obsolete and hard-to-find components to meet their specific needs.

With the principle of “Quality Parts,Customers Priority,Honest Operation,and Considerate Service”,our business mainly focus on the distribution of electronic components. Line cards we deal with include Microchip,ALPS,ROHM,Xilinx,Pulse,ON,Everlight and Freescale. Main products comprise IC,Modules,Potentiometer,IC Socket,Relay,Connector.Our parts cover such applications as commercial,industrial, and automotives areas.

We are looking forward to setting up business relationship with you and hope to provide you with the best service and solution. Let us make a better world for our industry!



Contact us

Tel: +86-755-8981 8866 Fax: +86-755-8427 6832

Email & Skype: info@chipsmall.com Web: www.chipsmall.com

Address: A1208, Overseas Decoration Building, #122 Zhenhua RD., Futian, Shenzhen, China



MINI QUARTER TURN WING KNOB



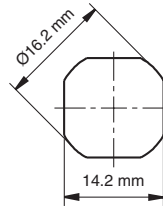
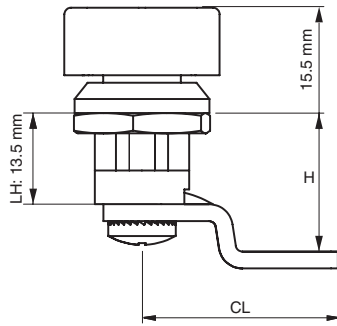
*Example with cam. Cam sold separately.

Specifications

- Material:
 - Housing: Zinc Alloy (Zamak) DIN-EN 1774-ZnAl4Cu1 or PA6 GFR 30
 - Knob: Zinc Alloy (Zamak) DIN-EN 1774-ZnAl4Cu1 or PA6 GFR 30
 - Cam: Steel

Features

- Wing operates as lock and serves as knob
- Sealing washer not supplied
- Applications: Electric panels, machinery covers

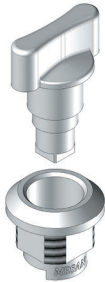


Cut Out

Zinc Alloy (Zamak) / Chrome

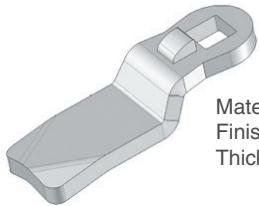
Zinc Alloy (Zamak) / Black Coated

Nylon

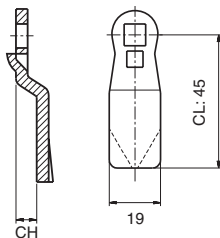


Item Number				
Zinc Alloy / Chrome	Zinc Alloy / Black	Nylon / Black	Driver	Cam
1661100	1661200	1662000	Wing Knob	Select Cam Below

Steel Cam



Material: Steel
Finish: Zinc plated
Thickness: 4 mm



Item Number	CH (mm)	CL (mm)	H (mm)
30403084	0	33	13.5
30403184	0	25	13.5
30403183	6	25	19.5
30403085	7	30	20.5
30403196	-6	25	7.5