



Chipsmall Limited consists of a professional team with an average of over 10 year of expertise in the distribution of electronic components. Based in Hongkong, we have already established firm and mutual-benefit business relationships with customers from,Europe,America and south Asia,supplying obsolete and hard-to-find components to meet their specific needs.

With the principle of “Quality Parts,Customers Priority,Honest Operation,and Considerate Service”,our business mainly focus on the distribution of electronic components. Line cards we deal with include Microchip,ALPS,ROHM,Xilinx,Pulse,ON,Everlight and Freescale. Main products comprise IC,Modules,Potentiometer,IC Socket,Relay,Connector.Our parts cover such applications as commercial,industrial, and automotives areas.

We are looking forward to setting up business relationship with you and hope to provide you with the best service and solution. Let us make a better world for our industry!



Contact us

Tel: +86-755-8981 8866 Fax: +86-755-8427 6832

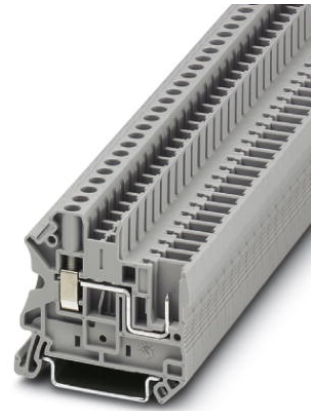
Email & Skype: info@chipsmall.com Web: www.chipsmall.com

Address: A1208, Overseas Decoration Building, #122 Zhenhua RD., Futian, Shenzhen, China



UT 4/ 1P

Order No.: 3045583

<http://eshop.phoenixcontact.de/phoenix/treeViewClick.do?UID=3045583>

Screw terminal block, Type of connection: Pluggable screw terminal block, Screw connection, Cross section: 0.14 mm² - 6 mm², AWG 26 - 10, Width: 6.2 mm, Color: gray, Mounting type: NS 35/7.5, NS 35/15

Commercial data

| | |
|--------------------------|--------------------|
| GTIN (EAN) | 4046356083096 |
| sales group | A870 |
| Pack | 50 pcs. |
| Customs tariff | 85369010 |
| Weight/Piece | 0.009298 KG |
| Catalog page information | Page 240 (CL-2009) |

Product notes

WEEE/RoHS-compliant since:
10/10/2005



<http://www.download.phoenixcontact.com>
Please note that the data given here has been taken from the online catalog. For comprehensive information and data, please refer to the user documentation. The General Terms and Conditions of Use apply to Internet downloads.

Technical data

General

| | |
|-----------------------|------|
| Number of levels | 1 |
| Number of connections | 2 |
| Color | gray |

| | |
|------------------------------------|-----------------------|
| Insulating material | PA |
| Inflammability class acc. to UL 94 | V0 |
| Bridge accessories | 3030271 FBS 10-6 32 A |

Dimensions

| | |
|------------------|---------|
| Width | 6.2 mm |
| Length | 47.6 mm |
| Height NS 35/7.5 | 47.5 mm |
| Height NS 35/15 | 55 mm |

Technical data

| | |
|----------------------------------|---|
| Maximum load current | 32 A (with 6 mm ² conductor cross section) |
| Rated surge voltage | 8 kV |
| Pollution degree | 3 |
| Surge voltage category | III |
| Insulating material group | I |
| Connection in acc. with standard | IEC 61984 |
| Nominal current I _N | 32 A |
| Nominal voltage U _N | 800 V |
| Open side panel | ja |

Connection data

| | |
|--|----------------------|
| Conductor cross section solid min. | 0.14 mm ² |
| Conductor cross section solid max. | 6 mm ² |
| Conductor cross section stranded min. | 0.14 mm ² |
| Conductor cross section stranded max. | 6 mm ² |
| Conductor cross section AWG/kcmil min. | 26 |
| Conductor cross section AWG/kcmil max | 10 |
| Conductor cross section stranded, with ferrule without plastic sleeve min. | 0.14 mm ² |
| Conductor cross section stranded, with ferrule without plastic sleeve max. | 4 mm ² |
| Conductor cross section stranded, with ferrule with plastic sleeve min. | 0.14 mm ² |
| Conductor cross section stranded, with ferrule with plastic sleeve max. | 4 mm ² |
| 2 conductors with same cross section, solid min. | 0.14 mm ² |
| 2 conductors with same cross section, solid max. | 1.5 mm ² |

| | |
|---|--------------------------------|
| 2 conductors with same cross section, stranded min. | 0.14 mm ² |
| 2 conductors with same cross section, stranded max. | 1.5 mm ² |
| 2 conductors with same cross section, stranded, TWIN ferrules with plastic sleeve, min. | 0.5 mm ² |
| 2 conductors with same cross section, stranded, TWIN ferrules with plastic sleeve, max. | 2.5 mm ² |
| 2 conductors with same cross section, stranded, ferrules without plastic sleeve, min. | 0.14 mm ² |
| 2 conductors with same cross section, stranded, ferrules without plastic sleeve, max. | 1.5 mm ² |
| Type of connection | Pluggable screw terminal block |
| Stripping length | 9 mm |
| Internal cylindrical gage | A4 |
| Screw thread | M3 |
| Tightening torque, min | 0.6 Nm |
| Tightening torque max | 0.8 Nm |

Certificates / Approvals



Certification CUL, UL

CUL

| | |
|-----------------------|-------|
| Nominal voltage U_N | 600 V |
| Nominal current I_N | 30 A |
| AWG/kcmil | 26-10 |

UL

| | |
|-----------------------|-------|
| Nominal voltage U_N | 600 V |
| Nominal current I_N | 30 A |
| AWG/kcmil | 26-10 |

| Accessories | | |
|--------------------|-----------------------------|--|
| Item | Designation | Description |
| Assembly | | |
| 3047167 | ATP-UT | Partition plate, Length: 50 mm, Width: 2 mm, Height: 48 mm, Color: gray |
| 3022276 | CLIPFIX 35-5 | Snap-on end bracket, for NS 35/7.5 or NS 35/15 DIN rail, can be fitted with Zack strip ZB 5 and ZBF 5, terminal strip marker KLM 2 and KLM, parking facility for FBS...5, FBS...6, KSS 5, KSS 6, width: 5,15 mm, color: gray |
| 3047154 | D-UT 2,5/1P | End cover, Length: 47.6 mm, Width: 2.2 mm, Height: 48.4 mm, Color: gray |
| 0801762 | NS 35/ 7,5 CU UNPERF 2000MM | DIN rail, material: Copper, unperforated, height 7.5 mm, width 35 mm, length: 2 m |
| 1207640 | NS 35/ 7,5 PERF 755MM | NS 35 DIN rail, height 7.5 mm, length 755 mm |
| 1207653 | NS 35/ 7,5 PERF 955MM | NS35 DIN rail, height 7.5 mm, length 955 mm |
| 1207666 | NS 35/ 7,5 PERF 1155MM | NS 35 DIN rail, height 7.5 mm, length 1155 mm |
| 0801733 | NS 35/ 7,5 PERF 2000MM | DIN rail, material: Steel, galvanized and passivated with a thick layer, perforated, height 7.5 mm, width 35 mm, length: 2 m |
| 0801681 | NS 35/ 7,5 UNPERF 2000MM | DIN rail, material: Steel, unperforated, height 7.5 mm, width 35 mm, length: 2 m |
| 1201756 | NS 35/15 AL UNPERF 2000MM | DIN rail, deep-drawn, high profile, unperforated, 1.5 mm thick, material: Aluminum, height 15 mm, width 35 mm, length 2 m |
| 1201895 | NS 35/15 CU UNPERF 2000MM | DIN rail, material: Copper, unperforated, 1.5 mm thick, height 15 mm, width 35 mm, length: 2 m |
| 1207679 | NS 35/15 PERF 755MM | NS 35 DIN rail, perforated, height 15 mm, length 755 mm |
| 1207682 | NS 35/15 PERF 955MM | NS 35 DIN rail, perforated, height 15 mm, length 955 mm |
| 1207695 | NS 35/15 PERF 1155MM | NS 35 DIN rail, perforated, height 15 mm, length 1155 mm |
| 1201730 | NS 35/15 PERF 2000MM | DIN rail, material: Steel, perforated, height 15 mm, width 35 mm, length: 2 m |
| 1201714 | NS 35/15 UNPERF 2000MM | DIN rail, material: Steel, unperforated, height 15 mm, width 35 mm, length: 2 m |
| 1201798 | NS 35/15-2,3 UNPERF 2000MM | DIN rail, material: Steel, unperforated, 2.3 mm thick, height 15 mm, width 35 mm, length: 2 m |
| Bridges | | |
| 3030336 | FBS 2-6 | Plug-in bridge, Number of positions: 2, Color: red |
| 3030242 | FBS 3-6 | Plug-in bridge, Number of positions: 3, Color: red |
| 3030255 | FBS 4-6 | Plug-in bridge, Number of positions: 4, Color: red |
| 3030349 | FBS 5-6 | Plug-in bridge, Number of positions: 5, Color: red |
| 3030271 | FBS 10-6 | Plug-in bridge, Number of positions: 10, Color: red |

| | | |
|---------|----------|---|
| 3030365 | FBS 20-6 | Plug-in bridge, Number of positions: 20, Color: red |
| 3032224 | FBS 50-6 | Plug-in bridge, Number of positions: 50, Color: red |

Marking

| | | |
|---------|------------------------|--|
| 3040588 | PC | Keying star, Length: 3 mm, Width: 3 mm, Height: 6 mm, Color: red |
| 0811228 | X-PEN 0,35 | Marker pen without ink cartridge, for manual labeling of markers, labeling extremely wipe-proof, line thickness 0.35 mm |
| 1051016 | ZB 6,LGS:FORTL.ZAHLEN | Zack marker strip, 10-section, printed horizontally: with the numbers 1 - 10, 11 - 20 and so on up to 491 - 500, color: white |
| 5060935 | ZB 6/WH-100:UNBEDRUCKT | Zack strip, unprinted: For individual labeling with M-PEN, ZB-T or CMS system, large batch, sufficient for labeling 1000 terminal blocks, for a terminal width of 6.2 mm, color: White |
| 1051003 | ZB 6:UNBEDRUCKT | Zack strip, unprinted, strips with 10 labels for individual labeling with M-PEN or CMS system, for terminal block width: 6.2 mm, color: white |

Plug/Adapter

| | | |
|---------|-----------|---------------------------------|
| 0201689 | MPS-IH BU | Insulating sleeve, Color: blue |
| 0201676 | MPS-IH RD | Insulating sleeve, Color: red |
| 0201663 | MPS-IH WH | Insulating sleeve, Color: white |
| 0201744 | MPS-MT | Test plugs |
| 3030925 | PAI-4 | Test adapter, Color: gray |
| 3030996 | PS-6 | Test adapter, Color: red |

Tools

| | | |
|---------|-------------|--|
| 1205053 | SZS 0,6X3,5 | Actuation tool, for ST terminal blocks, insulated, also suitable for use as a bladed screwdriver, size: 0.6 x 3.5 x 100 mm, 2-component grip, with non-slip grip |
|---------|-------------|--|

Additional products

| Item | Designation | Description |
|---------------------|--------------|---|
| Plug/Adapter | | |
| 3060115 | UP 4/ 1 | Connectors, Type of connection: Screw connection, Screw connection, Number of positions: 1, Cross section: 0.2 mm ² - 6 mm ² , AWG 24 - 10, Width: 6.2 mm, Height: 41 mm, Color: gray |
| 3060021 | UP 4/ 1-L | Connectors, Type of connection: Screw connection, Screw connection, Number of positions: 1, Cross section: 0.2 mm ² - 6 mm ² , AWG 24 - 10, Width: 6.2 mm, Height: 41 mm, Color: gray |
| 3060034 | UP 4/ 1-L BU | Connectors, Type of connection: Screw connection, Screw connection, Number of positions: 1, Cross section: 0.2 mm ² - 6 mm ² , AWG 24 - 10, Width: 6.2 mm, Height: 41 mm, Color: blue |

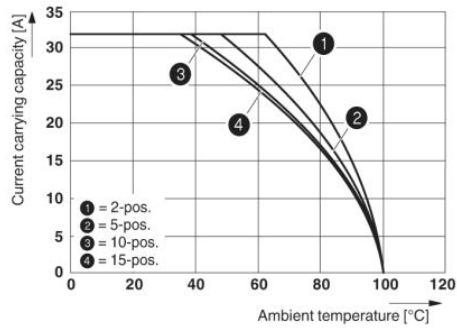
| | | |
|---------|----------------|---|
| 3060047 | UP 4/ 1-L GNYE | Connectors, Type of connection: Screw connection, Screw connection, Number of positions: 1, Cross section: 0.2 mm ² - 6 mm ² , AWG 24 - 10, Width: 6.2 mm, Height: 41 mm, Color: green-yellow |
| 3060050 | UP 4/ 1-M | Connectors, Type of connection: Screw connection, Screw connection, Number of positions: 1, Cross section: 0.2 mm ² - 6 mm ² , AWG 24 - 10, Width: 6.2 mm, Height: 41 mm, Color: gray |
| 3060063 | UP 4/ 1-M BU | Connectors, Type of connection: Screw connection, Screw connection, Number of positions: 1, Cross section: 0.2 mm ² - 6 mm ² , AWG 24 - 10, Width: 6.2 mm, Height: 41 mm, Color: blue |
| 3060076 | UP 4/ 1-M GNYE | Connectors, Type of connection: Screw connection, Screw connection, Number of positions: 1, Cross section: 0.2 mm ² - 6 mm ² , AWG 24 - 10, Width: 6.2 mm, Height: 41 mm, Color: green-yellow |
| 3060089 | UP 4/ 1-R | Connectors, Type of connection: Screw connection, Screw connection, Number of positions: 1, Cross section: 0.2 mm ² - 6 mm ² , AWG 24 - 10, Width: 6.2 mm, Height: 41 mm, Color: gray |
| 3060092 | UP 4/ 1-R BU | Connectors, Type of connection: Screw connection, Screw connection, Number of positions: 1, Cross section: 0.2 mm ² - 6 mm ² , AWG 24 - 10, Width: 6.2 mm, Height: 41 mm, Color: blue |
| 3060102 | UP 4/ 1-R GNYE | Connectors, Type of connection: Screw connection, Screw connection, Number of positions: 1, Cross section: 0.2 mm ² - 6 mm ² , AWG 24 - 10, Width: 6.2 mm, Height: 41 mm, Color: green-yellow |
| 3060128 | UP 4/ 2 | Connectors, Type of connection: Screw connection, Screw connection, Number of positions: 2, Cross section: 0.2 mm ² - 6 mm ² , AWG 24 - 10, Width: 12.4 mm, Height: 41 mm, Color: gray |
| 3060131 | UP 4/ 3 | Connectors, Type of connection: Screw connection, Screw connection, Number of positions: 3, Cross section: 0.2 mm ² - 6 mm ² , AWG 24 - 10, Width: 18.6 mm, Height: 41 mm, Color: gray |
| 3060144 | UP 4/ 4 | Connectors, Type of connection: Screw connection, Screw connection, Number of positions: 4, Cross section: 0.2 mm ² - 6 mm ² , AWG 24 - 10, Width: 24.8 mm, Height: 41 mm, Color: gray |
| 3060157 | UP 4/ 5 | Connectors, Type of connection: Screw connection, Screw connection, Number of positions: 5, Cross section: 0.2 mm ² - 6 mm ² , AWG 24 - 10, Width: 31 mm, Height: 41 mm, Color: gray |
| 3060160 | UP 4/ 6 | Connectors, Type of connection: Screw connection, Screw connection, Number of positions: 6, Cross section: 0.2 mm ² - 6 mm ² , AWG 24 - 10, Width: 37.2 mm, Height: 41 mm, Color: gray |
| 3060173 | UP 4/ 7 | Connectors, Type of connection: Screw connection, Screw connection, Number of positions: 7, Cross section: 0.2 mm ² - 6 mm ² , AWG 24 - 10, Width: 43.4 mm, Height: 41 mm, Color: gray |
| 3060186 | UP 4/ 8 | Connectors, Type of connection: Screw connection, Screw connection, Number of positions: 8, Cross section: 0.2 mm ² - 6 mm ² , AWG 24 - 10, Width: 49.6 mm, Height: 41 mm, Color: gray |
| 3060199 | UP 4/ 9 | Connectors, Type of connection: Screw connection, Screw connection, Number of positions: 9, Cross section: 0.2 mm ² - 6 mm ² , AWG 24 - 10, Width: 55.8 mm, Height: 41 mm, Color: gray |

| | | |
|---------|------------------|--|
| 3060209 | UP 4/10 | Connectors, Type of connection: Screw connection, Screw connection, Number of positions: 10, Cross section: 0.2 mm ² - 6 mm ² , AWG 24 - 10, Width: 62 mm, Height: 41 mm, Color: gray |
| 3060212 | UP 4/11 | Connectors, Type of connection: Screw connection, Screw connection, Number of positions: 11, Cross section: 0.2 mm ² - 6 mm ² , AWG 24 - 10, Width: 68.2 mm, Height: 41 mm, Color: gray |
| 3060225 | UP 4/12 | Connectors, Type of connection: Screw connection, Screw connection, Number of positions: 12, Cross section: 0.2 mm ² - 6 mm ² , AWG 24 - 10, Width: 74.4 mm, Height: 41 mm, Color: gray |
| 3060238 | UP 4/13 | Connectors, Type of connection: Screw connection, Screw connection, Number of positions: 13, Cross section: 0.2 mm ² - 6 mm ² , AWG 24 - 10, Width: 80.6 mm, Height: 41 mm, Color: gray |
| 3060241 | UP 4/14 | Connectors, Type of connection: Screw connection, Screw connection, Number of positions: 14, Cross section: 0.2 mm ² - 6 mm ² , AWG 24 - 10, Width: 86.8 mm, Height: 41 mm, Color: gray |
| 3060254 | UP 4/15 | Connectors, Type of connection: Screw connection, Screw connection, Number of positions: 15, Cross section: 0.2 mm ² - 6 mm ² , AWG 24 - 10, Width: 93 mm, Height: 41 mm, Color: gray |
| 3045800 | UPBV 4/ 1 | Connectors, Type of connection: Screw connection, Screw connection, Number of positions: 1, Cross section: 0.14 mm ² - 6 mm ² , AWG 26 - 10, Width: 6.2 mm, Height: 47 mm, Color: gray |
| 3045716 | UPBV 4/ 1-L | Connectors, Type of connection: Screw connection, Screw connection, Number of positions: 1, Cross section: 0.14 mm ² - 6 mm ² , AWG 26 - 10, Width: 6.2 mm, Height: 47 mm, Color: gray |
| 3045729 | UPBV 4/ 1-L BU | Connectors, Type of connection: Screw connection, Screw connection, Number of positions: 1, Cross section: 0.14 mm ² - 6 mm ² , AWG 26 - 10, Width: 6.2 mm, Height: 47 mm, Color: blue |
| 3045732 | UPBV 4/ 1-L GNYE | Connectors, Type of connection: Screw connection, Screw connection, Number of positions: 1, Cross section: 0.14 mm ² - 6 mm ² , AWG 26 - 10, Width: 6.2 mm, Height: 47 mm, Color: green-yellow |
| 3045745 | UPBV 4/ 1-M | Connectors, Type of connection: Screw connection, Screw connection, Number of positions: 1, Cross section: 0.14 mm ² - 6 mm ² , AWG 26 - 10, Width: 6.2 mm, Height: 47 mm, Color: gray |
| 3045758 | UPBV 4/ 1-M BU | Connectors, Type of connection: Screw connection, Screw connection, Number of positions: 1, Cross section: 0.14 mm ² - 6 mm ² , AWG 26 - 10, Width: 6.2 mm, Height: 47 mm, Color: blue |
| 3045761 | UPBV 4/ 1-M GNYE | Connectors, Type of connection: Screw connection, Screw connection, Number of positions: 1, Cross section: 0.14 mm ² - 6 mm ² , AWG 26 - 10, Width: 6.2 mm, Height: 47 mm, Color: green-yellow |
| 3045774 | UPBV 4/ 1-R | Connectors, Type of connection: Screw connection, Screw connection, Number of positions: 1, Cross section: 0.14 mm ² - 6 mm ² , AWG 26 - 10, Width: 6.2 mm, Height: 47 mm, Color: gray |
| 3045787 | UPBV 4/ 1-R BU | Connectors, Type of connection: Screw connection, Screw connection, Number of positions: 1, Cross section: 0.14 mm ² - 6 mm ² , AWG 26 - 10, Width: 6.2 mm, Height: 47 mm, Color: blue |

| | | |
|---------|------------------|--|
| 3045790 | UPBV 4/ 1-R GNYE | Connectors, Type of connection: Screw connection, Screw connection, Number of positions: 1, Cross section: 0.14 mm ² - 6 mm ² , AWG 26 - 10, Width: 6.2 mm, Height: 47 mm, Color: green-yellow |
| 3045813 | UPBV 4/ 2 | Connectors, Type of connection: Screw connection, Screw connection, Number of positions: 2, Cross section: 0.14 mm ² - 6 mm ² , AWG 26 - 10, Width: 12.4 mm, Height: 47 mm, Color: gray |
| 3045826 | UPBV 4/ 3 | Connectors, Type of connection: Screw connection, Screw connection, Number of positions: 3, Cross section: 0.14 mm ² - 6 mm ² , AWG 26 - 10, Width: 18.6 mm, Height: 47 mm, Color: gray |
| 3045839 | UPBV 4/ 4 | Connectors, Type of connection: Screw connection, Screw connection, Number of positions: 4, Cross section: 0.14 mm ² - 6 mm ² , AWG 26 - 10, Width: 24.8 mm, Height: 47 mm, Color: gray |
| 3045842 | UPBV 4/ 5 | Connectors, Type of connection: Screw connection, Screw connection, Number of positions: 5, Cross section: 0.14 mm ² - 6 mm ² , AWG 26 - 10, Width: 31 mm, Height: 47 mm, Color: gray |
| 3045855 | UPBV 4/ 6 | Connectors, Type of connection: Screw connection, Screw connection, Number of positions: 6, Cross section: 0.14 mm ² - 6 mm ² , AWG 26 - 10, Width: 37.2 mm, Height: 47 mm, Color: gray |
| 3045868 | UPBV 4/ 7 | Connectors, Type of connection: Screw connection, Screw connection, Number of positions: 7, Cross section: 0.14 mm ² - 6 mm ² , AWG 26 - 10, Width: 43.4 mm, Height: 47 mm, Color: gray |
| 3045871 | UPBV 4/ 8 | Connectors, Type of connection: Screw connection, Screw connection, Number of positions: 8, Cross section: 0.14 mm ² - 6 mm ² , AWG 26 - 10, Width: 49.6 mm, Height: 47 mm, Color: gray |
| 3045884 | UPBV 4/ 9 | Connectors, Type of connection: Screw connection, Screw connection, Number of positions: 9, Cross section: 0.14 mm ² - 6 mm ² , AWG 26 - 10, Width: 55.8 mm, Height: 47 mm, Color: gray |
| 3045897 | UPBV 4/10 | Connectors, Type of connection: Screw connection, Screw connection, Number of positions: 10, Cross section: 0.14 mm ² - 6 mm ² , AWG 26 - 10, Width: 62 mm, Height: 47 mm, Color: gray |
| 3045907 | UPBV 4/11 | Connectors, Type of connection: Screw connection, Screw connection, Number of positions: 11, Cross section: 0.14 mm ² - 6 mm ² , AWG 26 - 10, Width: 68.2 mm, Height: 47 mm, Color: gray |
| 3045910 | UPBV 4/12 | Connectors, Type of connection: Screw connection, Screw connection, Number of positions: 12, Cross section: 0.14 mm ² - 6 mm ² , AWG 26 - 10, Width: 74.4 mm, Height: 47 mm, Color: gray |
| 3045923 | UPBV 4/13 | Connectors, Type of connection: Screw connection, Screw connection, Number of positions: 13, Cross section: 0.14 mm ² - 6 mm ² , AWG 26 - 10, Width: 80.6 mm, Height: 47 mm, Color: gray |
| 3045936 | UPBV 4/14 | Connectors, Type of connection: Screw connection, Screw connection, Number of positions: 14, Cross section: 0.14 mm ² - 6 mm ² , AWG 26 - 10, Width: 86.8 mm, Height: 47 mm, Color: gray |
| 3045949 | UPBV 4/15 | Connectors, Type of connection: Screw connection, Screw connection, Number of positions: 15, Cross section: 0.14 mm ² - 6 mm ² , AWG 26 - 10, Width: 93 mm, Height: 47 mm, Color: gray |

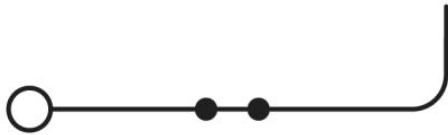
Diagrams/Drawings

Diagram



The figure shows the derating curve of the UT 4/1P... terminal block in connection with the UPVB 4 connector

Circuit diagram



Address

PHOENIX CONTACT Inc., USA
586 Fulling Mill Road
Middletown, PA 17057, USA
Phone (800) 888-7388
Fax (717) 944-1625
<http://www.phoenixcon.com>



© 2010 Phoenix Contact
Technical modifications reserved;