



Chipsmall Limited consists of a professional team with an average of over 10 year of expertise in the distribution of electronic components. Based in Hongkong, we have already established firm and mutual-benefit business relationships with customers from,Europe,America and south Asia,supplying obsolete and hard-to-find components to meet their specific needs.

With the principle of “Quality Parts,Customers Priority,Honest Operation,and Considerate Service”,our business mainly focus on the distribution of electronic components. Line cards we deal with include Microchip,ALPS,ROHM,Xilinx,Pulse,ON,Everlight and Freescale. Main products comprise IC,Modules,Potentiometer,IC Socket,Relay,Connector.Our parts cover such applications as commercial,industrial, and automotives areas.

We are looking forward to setting up business relationship with you and hope to provide you with the best service and solution. Let us make a better world for our industry!



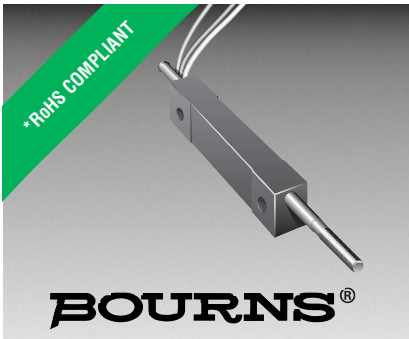
Contact us

Tel: +86-755-8981 8866 Fax: +86-755-8427 6832

Email & Skype: info@chipsmall.com Web: www.chipsmall.com

Address: A1208, Overseas Decoration Building, #122 Zhenhua RD., Futian, Shenzhen, China





Features

- Compact
- Lightweight
- Long life
- Infinite resolution
- Free shaft rotation
- AC or DC
- Shaft options available
- Flexible wire leads
- Economical
- RoHS compliant*

3048 Linear Motion Potentiometer

Specifications†

Standard Electrical Travel	0.2, 0.3, 0.4, 0.5 in. (5.08, 7.62, 10.16, 12.70 mm)
Standard Resistances	1K ohms to 50K ohms (± 20 %)
Independent Linearity	± 5 %
Resolution	Infinite
Power Rating @ 70 °C (158 °F)	
Range 2, 3	0.12 watt
Range 4, 5	0.25 watt
Operating Temperature Range	-55 °C to +125 °C
Temperature Coefficient	1000 PPM/°C
Insulation Resistance	50 megohms @ 500 VDC
Backlash	Negligible
Shaft Actuating Force	4 oz. max. @ 70 °F
Life	500,000 cycles
Shock	50 G for 7 msec
Vibration	20 G, 10-2 kHz
Marking	Manufacturer's trademark, resistance code, wiring diagram, date code, manufacturer's model number and style

Specifications are typical. Contact factory for special requirements.
 † Specifications applicable from 5 % to 95 % of electrical travel.

How to Order

3048 L - 2 - 502

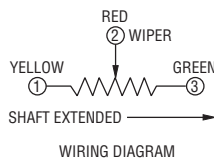
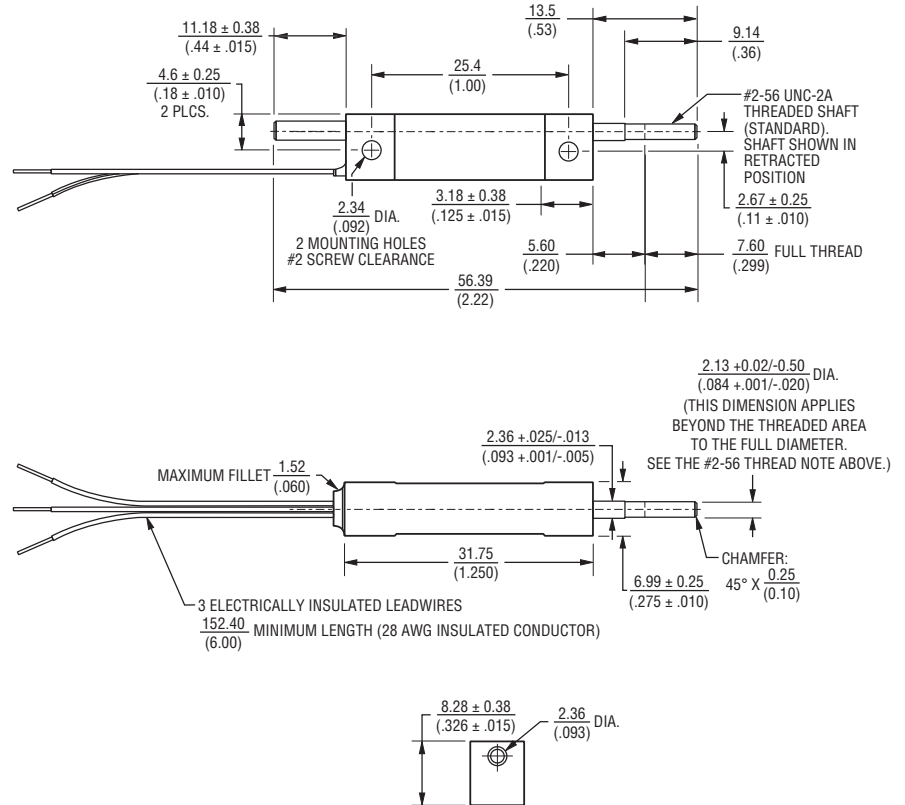
Model	_____
Style	_____
Range (Travel)	_____
2	= 0.2" (5.08 mm)
3	= 0.3" (7.62 mm)
4	= 0.4" (10.16 mm)
5	= 0.5" (12.70 mm)
Resistance Value	_____

Stainless steel shaft is available upon request.

Standard Resistance Table

Resistance (Ohms)	Resistance Code
1,000	102
2,500	252
5,000	502
10,000	103
20,000	203
50,000	503

Product Dimensions



TOLERANCES: ± .010 (0.25) EXCEPT WHERE NOTED

DIMENSIONS: $\frac{\text{MM}}{\text{(INCHES)}}$