



Chipsmall Limited consists of a professional team with an average of over 10 year of expertise in the distribution of electronic components. Based in Hongkong, we have already established firm and mutual-benefit business relationships with customers from,Europe,America and south Asia,supplying obsolete and hard-to-find components to meet their specific needs.

With the principle of “Quality Parts,Customers Priority,Honest Operation,and Considerate Service”,our business mainly focus on the distribution of electronic components. Line cards we deal with include Microchip,ALPS,ROHM,Xilinx,Pulse,ON,Everlight and Freescale. Main products comprise IC,Modules,Potentiometer,IC Socket,Relay,Connector.Our parts cover such applications as commercial,industrial, and automotives areas.

We are looking forward to setting up business relationship with you and hope to provide you with the best service and solution. Let us make a better world for our industry!



Contact us

Tel: +86-755-8981 8866 Fax: +86-755-8427 6832

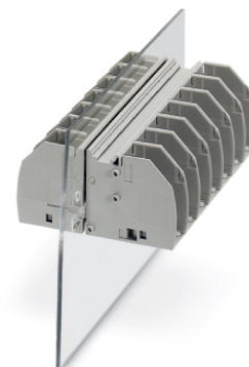
Email & Skype: info@chipsmall.com Web: www.chipsmall.com

Address: A1208, Overseas Decoration Building, #122 Zhenhua RD., Futian, Shenzhen, China



RWO 5/S

Order No.: 3056129



<http://eshop.phoenixcontact.de/phoenix/treeViewClick.do?UID=3056129>

Bolt connection terminal block, Connection method: Bolt connection,
Load current : 76 A, Cross-section: 0.1 mm² - 16 mm², AWG 26 - 6,
Connection direction of the conductor to plug-in direction: 0 °,
Width: 16.3 mm, Color: gray

Commercial data

GTIN (EAN)	 4 046356 427135
Note	Made-to-order
sales group	A420
Pack	10 pcs.
Customs tariff	85369010
Catalog page information	Page 58 (NTK-2010)

Product notes

WEEE/RoHS-compliant since:
06/24/2008



<http://www.download.phoenixcontact.com>
Please note that the data given here has been taken from the online catalog. For comprehensive information and data, please refer to the user documentation. The General Terms and Conditions of Use apply to Internet downloads.

Technical data

General

Number of levels	1
Number of connections	2
Color	gray

Insulating material	PA
Inflammability class acc. to UL 94	V0

Dimensions

Width	16.3 mm
-------	---------

Technical data

Rated surge voltage	8 kV
Pollution degree	3
Surge voltage category	III
Insulating material group	I
Connection in acc. with standard	IEC 60947-7-1
Nominal current I_N	76 A
Nominal voltage U_N	1000 V

Connection data

Conductor cross section solid min.	0.1 mm ²
Conductor cross section solid max.	16 mm ²
Conductor cross section stranded min.	0.1 mm ²
Conductor cross section stranded max.	16 mm ²
Conductor cross section AWG/kcmil min.	26
Conductor cross section AWG/kcmil max	6
Connection method	Bolt connection
Screw thread	M5
Tightening torque, min	2.5 Nm
Tightening torque max	3 Nm

Accessories

Item	Designation	Description
General		
3075155	RW 5-F	Flange cover, Color: gray
Marking		
0828295	TMT (EX9,5)R	Terminal marking with 9.5 mm strip height, continuous, without color print, for all terminals with ZB or ZBF groove, can be labeled using a thermal transfer printer, 1 roll = 50 m

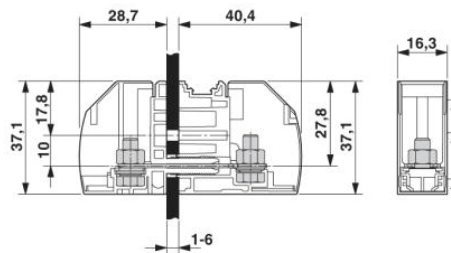
0819194	UC-TM 12	UniCard materials for labeling terminal blocks with a marker groove, 40-section, can be labeled with BLUEMARK X1 and CMS-P1-PLOTTER, color: white
0819217	UC-TM 16	UniCard materials for labeling terminal blocks with a marker groove, 32-section, can be labeled with BLUEMARK X1 and CMS-P1-PLOTTER, color: white
0819233	UC-TMF 12	UniCard sheets, for labeling terminal blocks using a flat Zack marker strip groove, 40-section, can be labeled with BLUEMARK X1 and CMS-P1-PLOTTER, color: White
0819262	UC-TMF 16	UniCard sheets, for labeling terminals using a flat Zack marker strip groove, 32-section, can be labeled with BLUEMARK X1 and CMS-P1-PLOTTER, color: White

Tools

1205079	SZS 1,0X6,5 VDE	Screwdriver, bladed, VDE insulated, size: 1.0 x 6.5 x 150 mm, 2-component grip, with non-slip grip
---------	-----------------	--

Diagrams/Drawings

Dimensioned drawing



Address

PHOENIX CONTACT Inc., USA
586 Fulling Mill Road
Middletown, PA 17057, USA
Phone (800) 888-7388
Fax (717) 944-1625
<http://www.phoenixcon.com>



© 2011 Phoenix Contact
Technical modifications reserved;