



Chipsmall Limited consists of a professional team with an average of over 10 year of expertise in the distribution of electronic components. Based in Hongkong, we have already established firm and mutual-benefit business relationships with customers from,Europe,America and south Asia,supplying obsolete and hard-to-find components to meet their specific needs.

With the principle of “Quality Parts,Customers Priority,Honest Operation,and Considerate Service”,our business mainly focus on the distribution of electronic components. Line cards we deal with include Microchip,ALPS,ROHM,Xilinx,Pulse,ON,Everlight and Freescale. Main products comprise IC,Modules,Potentiometer,IC Socket,Relay,Connector.Our parts cover such applications as commercial,industrial, and automotives areas.

We are looking forward to setting up business relationship with you and hope to provide you with the best service and solution. Let us make a better world for our industry!



## Contact us

Tel: +86-755-8981 8866 Fax: +86-755-8427 6832

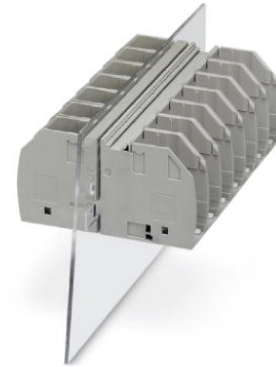
Email & Skype: info@chipsmall.com Web: www.chipsmall.com

Address: A1208, Overseas Decoration Building, #122 Zhenhua RD., Futian, Shenzhen, China



## RWO 8


Order No.: 3056132



<http://eshop.phoenixcontact.de/phoenix/treeViewClick.do?UID=3056132>

Feed-through terminal block, Connection method: Bolt connection,  
Load current : 125 A, Cross-section: 2.5 mm<sup>2</sup> - 35 mm<sup>2</sup>, AWG 14 - 2,  
Connection direction of the conductor to plug-in direction: 0 °,  
Width: 20.3 mm, Color: gray

### Commercial data

GTIN (EAN)	 4 046356 427142
Note	Made-to-order
sales group	A420
Pack	10 pcs.
Customs tariff	85369010
Catalog page information	Page 60 (NTK-2010)

### Product notes

WEEE/RoHS-compliant since:  
06/24/2008



<http://www.download.phoenixcontact.com>  
Please note that the data given here has been taken from the online catalog. For comprehensive information and data, please refer to the user documentation. The General Terms and Conditions of Use apply to Internet downloads.

### Technical data

#### General

Number of levels	1
Number of connections	2
Color	gray

Insulating material	PA
Inflammability class acc. to UL 94	V0

**Dimensions**

Width	20.3 mm
-------	---------

**Technical data**

Maximum load current	125 A
Rated surge voltage	6 kV
Pollution degree	3
Surge voltage category	III
Insulating material group	I
Connection in acc. with standard	IEC 60947-7-1
Nominal current $I_N$	125 A
Nominal voltage $U_N$	1000 V

**Connection data**

Conductor cross section solid min.	2.5 mm <sup>2</sup>
Conductor cross section solid max.	35 mm <sup>2</sup>
Conductor cross section stranded min.	2.5 mm <sup>2</sup>
Conductor cross section stranded max.	35 mm <sup>2</sup>
Conductor cross section AWG/kcmil min.	14
Conductor cross section AWG/kcmil max	2
Connection method	Bolt connection
Screw thread	M8
Tightening torque, min	4.5 Nm
Tightening torque max	5 Nm

**Accessories**

Item	Designation	Description
<b>General</b>		
3075171	RW 8-F	Flange cover, Color: gray
0820222	ZB 16,3:UNPRINTED	Terminal marking
0820248	ZB 20,3:UNPRINTED	Terminal marking

**Marking**

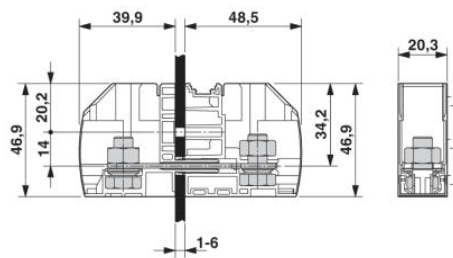
0828295	TMT (EX9,5)R	Terminal marking with 9.5 mm strip height, continuous, without color print, for all terminals with ZB or ZBF groove, can be labeled using a thermal transfer printer, 1 roll = 50 m
---------	--------------	---

**Tools**

1205079	SZS 1,0X6,5 VDE	Screwdriver, bladed, VDE insulated, size: 1.0 x 6.5 x 150 mm, 2-component grip, with non-slip grip
---------	-----------------	--

**Diagrams/Drawings**

## Dimensioned drawing



**Address**

PHOENIX CONTACT Inc., USA  
586 Fulling Mill Road  
Middletown, PA 17057, USA  
Phone (800) 888-7388  
Fax (717) 944-1625  
<http://www.phoenixcon.com>



© 2011 Phoenix Contact  
Technical modifications reserved;