



Chipsmall Limited consists of a professional team with an average of over 10 year of expertise in the distribution of electronic components. Based in Hongkong, we have already established firm and mutual-benefit business relationships with customers from,Europe,America and south Asia,supplying obsolete and hard-to-find components to meet their specific needs.

With the principle of "Quality Parts,Customers Priority,Honest Operation,and Considerate Service",our business mainly focus on the distribution of electronic components. Line cards we deal with include Microchip,ALPS,ROHM,Xilinx,Pulse,ON,Everlight and Freescale. Main products comprise IC,Modules,Potentiometer,IC Socket,Relay,Connector.Our parts cover such applications as commercial,industrial, and automotives areas.

We are looking forward to setting up business relationship with you and hope to provide you with the best service and solution. Let us make a better world for our industry!



Contact us

Tel: +86-755-8981 8866 Fax: +86-755-8427 6832

Email & Skype: info@chipsmall.com Web: www.chipsmall.com

Address: A1208, Overseas Decoration Building, #122 Zhenhua RD., Futian, Shenzhen, China





TECHNICAL DATA

Busmann

RANGE TRACTION

REF. KTH

CURRENT RATING

3-65 AMPS

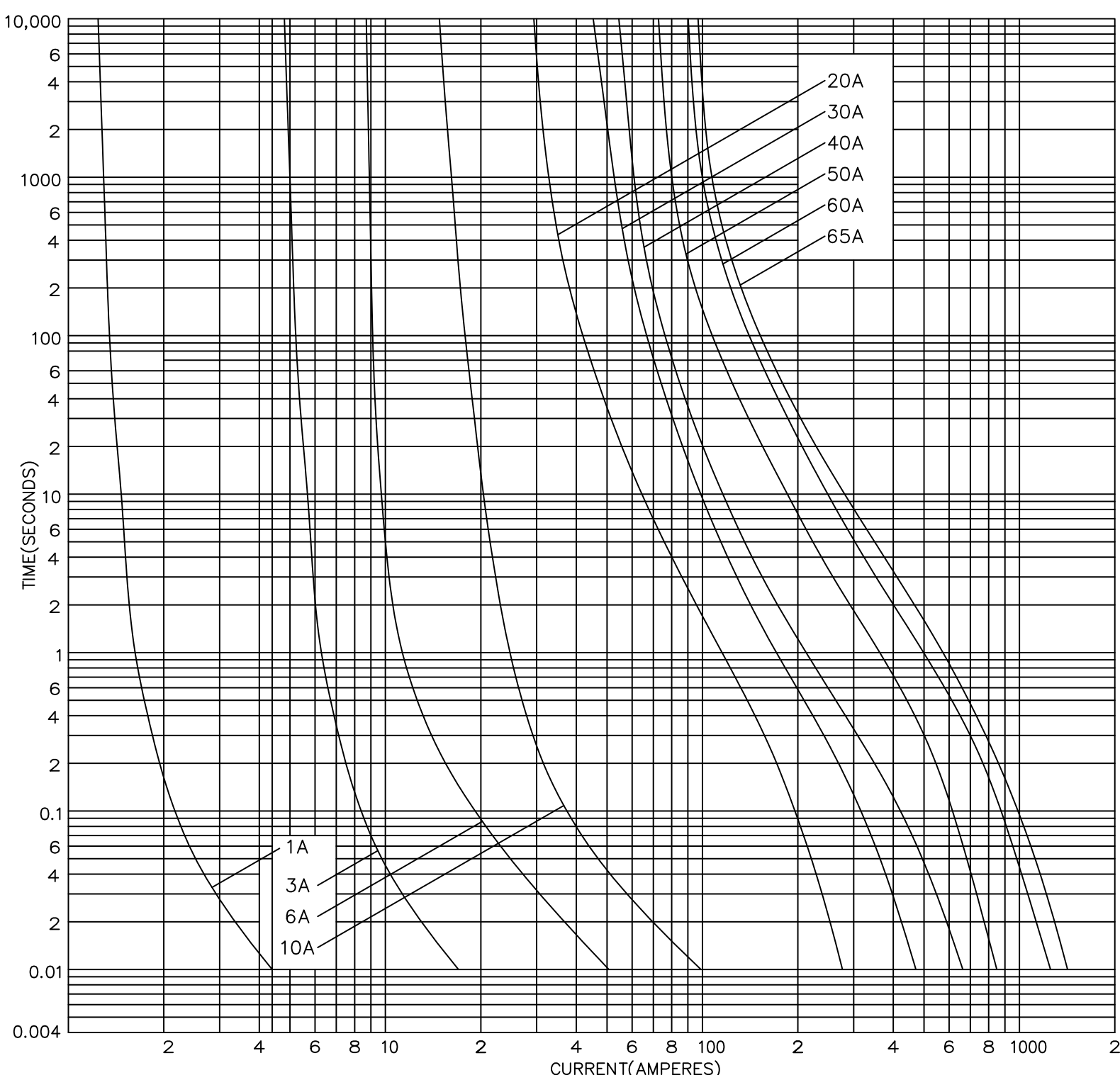
SPECIFICATION

BRITISH RAIL

DRG. No. E5785108
Rev B, Aug 00

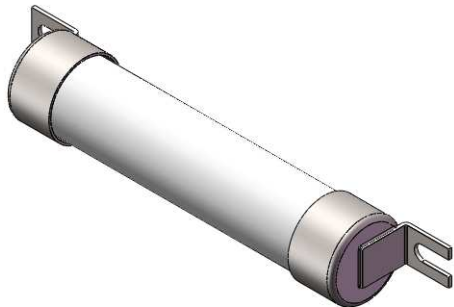
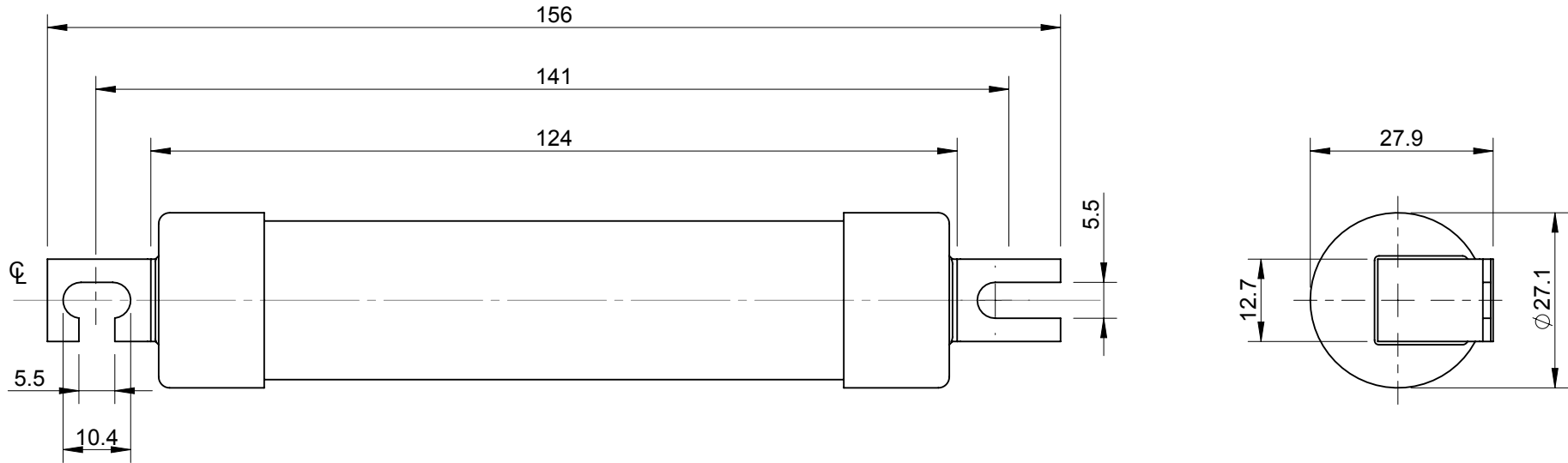
DATE APRIL 1987


RATING AND TYPE	I ² t (AMPERE ² SECONDS)			NOM. WATTS LOSS
	PRE-ARCING	TOTAL AT 1000Vd.c	TOTAL AT 1200Va.c	
1KTH	0.2	0.7	1	1.7
3KTH	3.1	9.3	10	3.9
6KTH	27	81	86	6.4
10KTH	110	320	350	9.0
20KTH	675	1,550	1,650	5.6
30KTH	1,850	4,300	4,600	7.1
40KTH	3,650	8,500	9,000	10.0
50KTH	7,500	17,500	18,000	9.0
60KTH	14,500	34,000	36,000	11.0
65KTH	19,000	44,000	47,000	10.0



ITEM No. 5778861

REV	DESCRIPTION	BY	DATE	CHANGE NO.
C	NOMINAL DIMENSIONS UPDATED	JW	10/11/2015	BUEB19366



MODEL VERSION: 00 MODEL SOURCE FILE: 5778861	UNLESS OTHERWISE SPECIFIED, ALL DIMENSIONS ARE IN MILLIMETERS. TOLERANCES UNLESS OTHERWISE SPECIFIED: GENERAL ± 0.4mm ANGULAR ± 1°	OUTLINE FOR KTH FUSE LINKS (3-65A)					 <i>Powering Business Worldwide</i>
	UNCONTROLLED COPY	DRAWN BY: RAG	DATE: 14/06/2013	SCALE: NTS	ANGLE: THIRD	SIZE: A4	
	THIS DRAWING IS CONFIDENTIAL AND THE COPYRIGHT OF EATON AND MUST NOT BE COPIED OR PASSED ON TO A THIRD PARTY WITHOUT WRITTEN CONSENT	MATERIAL: VARIOUS		FINISH: NONE			
DWG NO: 5778861						REV: C	SHEET: 1 OF 1