



Chipsmall Limited consists of a professional team with an average of over 10 year of expertise in the distribution of electronic components. Based in Hongkong, we have already established firm and mutual-benefit business relationships with customers from,Europe,America and south Asia,supplying obsolete and hard-to-find components to meet their specific needs.

With the principle of “Quality Parts,Customers Priority,Honest Operation,and Considerate Service”,our business mainly focus on the distribution of electronic components. Line cards we deal with include Microchip,ALPS,ROHM,Xilinx,Pulse,ON,Everlight and Freescale. Main products comprise IC,Modules,Potentiometer,IC Socket,Relay,Connector.Our parts cover such applications as commercial,industrial, and automotives areas.

We are looking forward to setting up business relationship with you and hope to provide you with the best service and solution. Let us make a better world for our industry!



Contact us

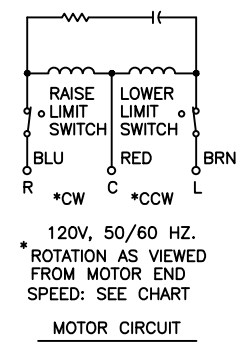
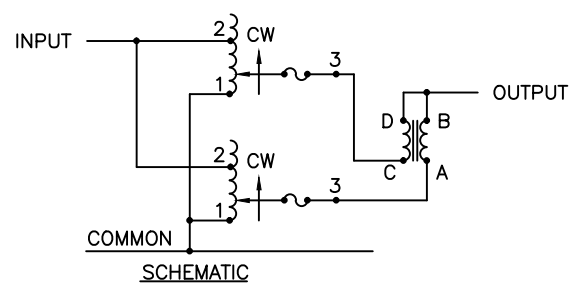
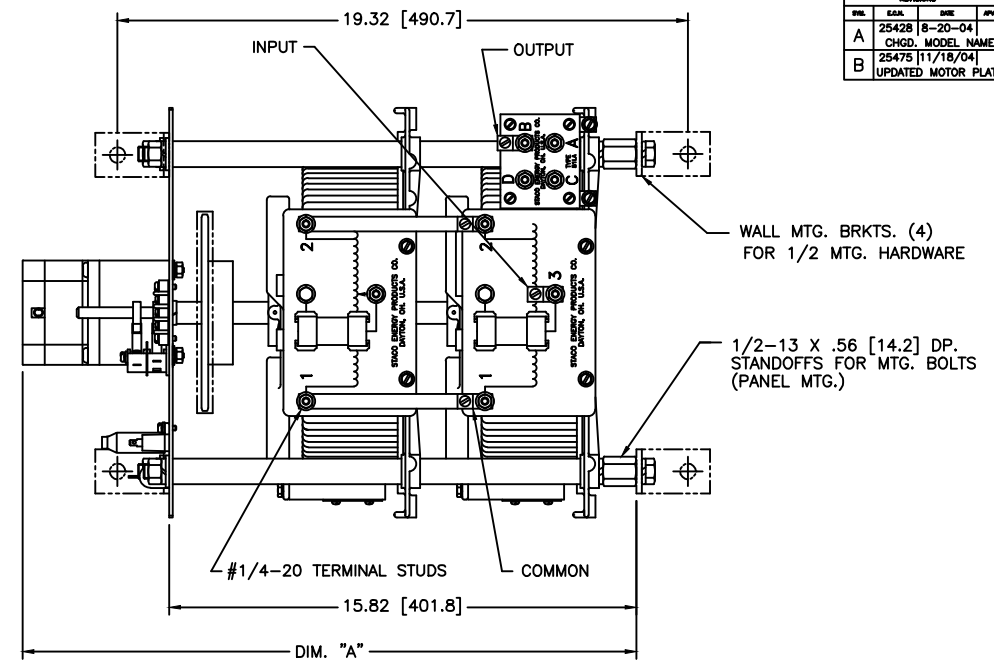
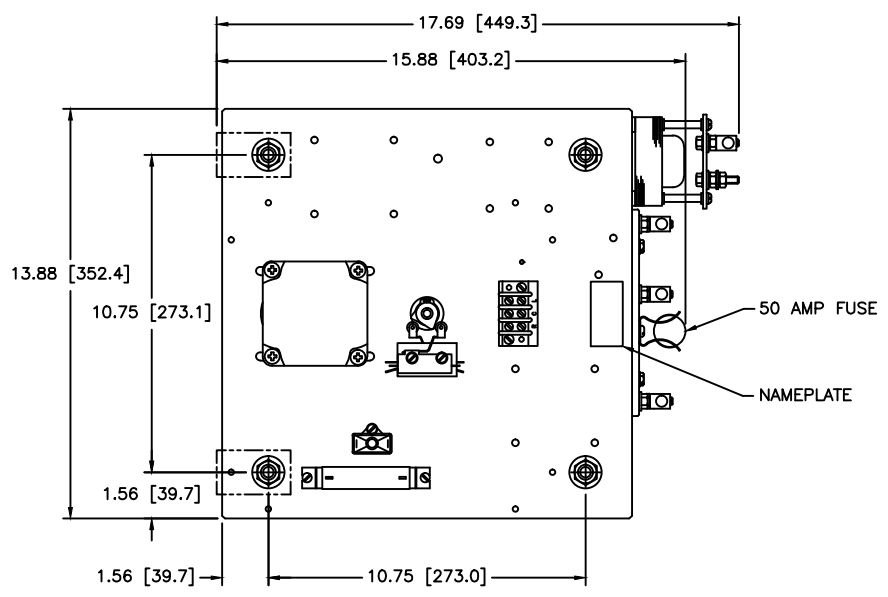
Tel: +86-755-8981 8866 Fax: +86-755-8427 6832

Email & Skype: info@chipsmall.com Web: www.chipsmall.com

Address: A1208, Overseas Decoration Building, #122 Zhenhua RD., Futian, Shenzhen, China



REV.	REV. NO.	031-6205		
REVISIONS				
REV.	CAUSE	DATE	APPROV.	
A	25428	8-20-04	CHGD. MODEL NAME	
B	25475	11/18/04	UPDATED MOTOR PLATE	



SPEED (SECONDS)	MODEL NUMBER	DIM. "A"
5	5M5011-2P	20.38 [517.6]
15	15M5011-2P	20.78 [527.8]
30	30M5011-2P	20.78 [527.8]
60	60M5011-2P	20.78 [527.8]

WIRING	INPUT		OUTPUT			SHAFT ROTATION FOR INCREASE VOLTAGE	TERMINAL CONNECTIONS FOR INCREASING VOLTAGE AS VIEWED FROM ROTOR END	
	VOLTS	HERTZ	VOLTS	MAX. AMPS	MAX. KVA		INPUT	OUTPUT
SINGLE PHASE PARALLEL	120	50/60	0-140	100	14	CW	1-2	1-B

UNLESS OTHERWISE SPECIFIED, TOLERANCE IS AS SHOWN IN PARENT DIMENSIONS.	ALL DIMENSIONS ARE IN INCHES UNLESS OTHERWISE SPECIFIED.	DATE	10/15/97	DESIGNED BY	TIM RAU	SCALE	1:1
SPEC. CONTROL DRAWING VARIABLE MOTORIZED XFMR. MODEL: M5011-2P		DATE	10/15/97	APPROVED BY	TIM RAU	SCALE	1:1
The information and design disclosed herein are confidential and are the property of STAGS ENERGY PRODUCTS CO. which reserves all rights in this design. Any unauthorized disclosure or use of this information is strictly prohibited. The design is the property of STAGS ENERGY PRODUCTS CO. and is not to be used for any other purpose without the written consent of STAGS ENERGY PRODUCTS CO.		DATE	10/15/97	APPROVED BY	TIM RAU	SCALE	1:1



REV. NO. D 031-6205