



Chipsmall Limited consists of a professional team with an average of over 10 year of expertise in the distribution of electronic components. Based in Hongkong, we have already established firm and mutual-benefit business relationships with customers from,Europe,America and south Asia,supplying obsolete and hard-to-find components to meet their specific needs.

With the principle of “Quality Parts,Customers Priority,Honest Operation,and Considerate Service”,our business mainly focus on the distribution of electronic components. Line cards we deal with include Microchip,ALPS,ROHM,Xilinx,Pulse,ON,Everlight and Freescale. Main products comprise IC,Modules,Potentiometer,IC Socket,Relay,Connector.Our parts cover such applications as commercial,industrial, and automotives areas.

We are looking forward to setting up business relationship with you and hope to provide you with the best service and solution. Let us make a better world for our industry!



## Contact us

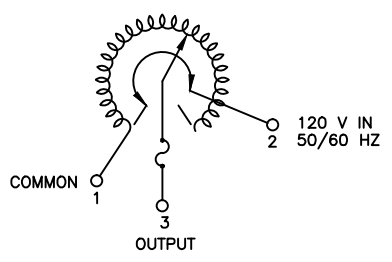
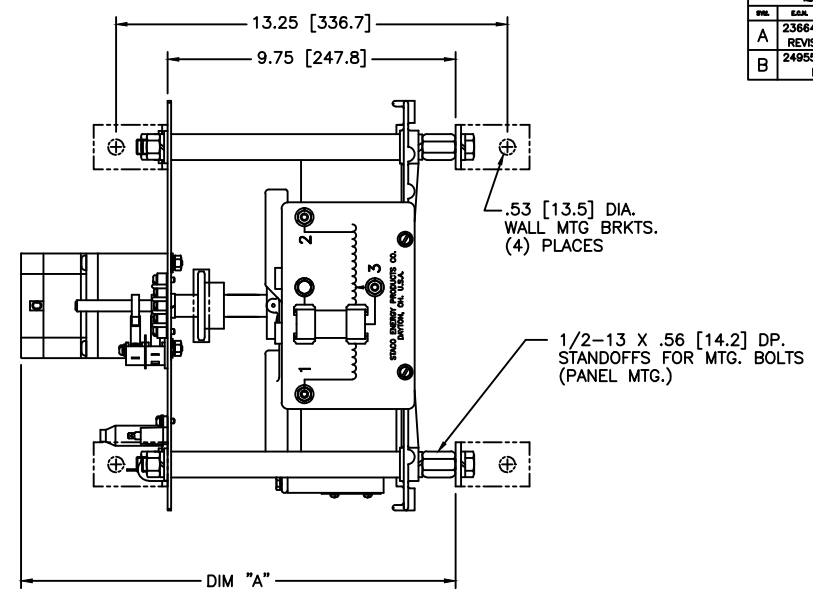
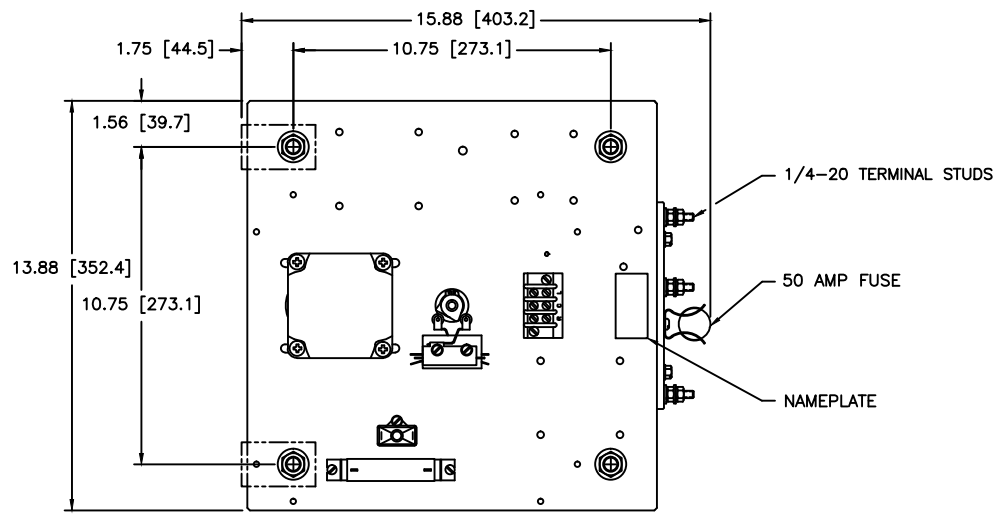
Tel: +86-755-8981 8866 Fax: +86-755-8427 6832

Email & Skype: info@chipsmall.com Web: www.chipsmall.com

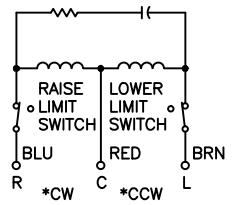
Address: A1208, Overseas Decoration Building, #122 Zhenhua RD., Futian, Shenzhen, China



REV. NO.	031-6175		
REVISIONS			
REV.	CA.	DATE	APPROV.
A	23664	1/21/98	
REVISED & UPDATED			
B	24955	11/18/02	
NEW MOTOR			



SCHMATIC  
VIEW FROM ROTOR END



120V, 50/60 HZ.  
\* ROTATION AS VIEWED FROM MOTOR END  
SPEED: SEE CHART

MOTOR CIRCUIT

SPEED (SECONDS)	MODEL NUMBER	DIM. "A"
5	5M5011	13.45 [341.6]
15	15M5011	14.72 [373.8]
30	30M5011	14.72 [373.8]
60	60M5011	14.72 [373.8]

WIRING	INPUT		OUTPUT				SHAFT ROTATION TO INCREASE VOLTAGE	TERMINAL CONNECTIONS FOR INCREASING VOLTAGE AS VIEWED FROM ROTOR END	
	VOLTS	HERTZ	VOLTS	CONSTANT CURRENT LOAD		INPUT		OUTPUT	
				MAX. AMPS	MAX. KVA				
SINGLE PHASE	120	50/60	0-140	50	7.0	CW	1-2	1-3	

SPEC. CONTROL DRAWING MOTORIZED VARIABLE XFMR. TYPE: M5011			
DESIGNED BY TIM RAU	DATE 10/21/02	FIRST USED ON DATE 10/21/02	REV. NO. DATE 03008
CHECKED BY DATE	APPROVED BY DATE	SCALE .5=1	REV. NO. DATE D 031-6175