

Chipsmall Limited consists of a professional team with an average of over 10 year of expertise in the distribution of electronic components. Based in Hongkong, we have already established firm and mutual-benefit business relationships with customers from,Europe,America and south Asia,supplying obsolete and hard-to-find components to meet their specific needs.

With the principle of “Quality Parts,Customers Priority,Honest Operation,and Considerate Service”,our business mainly focus on the distribution of electronic components. Line cards we deal with include Microchip,ALPS,ROHM,Xilinx,Pulse,ON,Everlight and Freescale. Main products comprise IC,Modules,Potentiometer,IC Socket,Relay,Connector.Our parts cover such applications as commercial,industrial, and automotives areas.

We are looking forward to setting up business relationship with you and hope to provide you with the best service and solution. Let us make a better world for our industry!



## Contact us

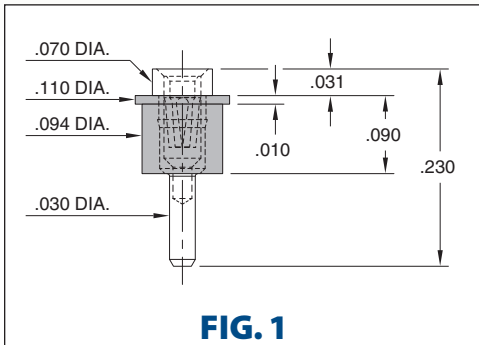
Tel: +86-755-8981 8866 Fax: +86-755-8427 6832

Email & Skype: [info@chipsmall.com](mailto:info@chipsmall.com) Web: [www.chipsmall.com](http://www.chipsmall.com)

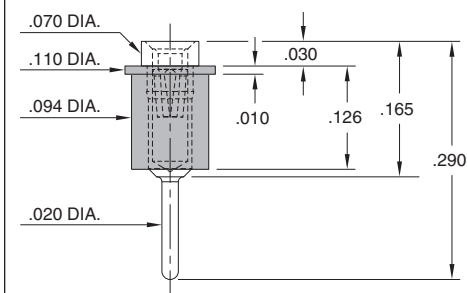
Address: A1208, Overseas Decoration Building, #122 Zhenhua RD., Futian, Shenzhen, China

# INTERCONNECTS

## SERIES 305, 310 DISCRETE INSULATED RECEPTACLES

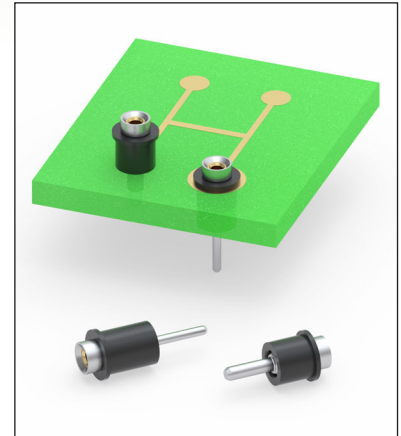


**FIG. 1**



**FIG. 2**

- Series 305 and 310 single position insulated parts are offered in standard and low profile styles  
305-43-001-30-010800 uses pin #0501-0  
310-43-001-30-010800 uses pin #1001-0  
See pages 162 and 165 for details
- Insulated terminals are used to electrically isolate single pin interconnects in an assembly. The plastic sleeve provides insulation of the terminal from nearby conductive components or for applications such as mounting through a metal panel or other non-insulated housing. The sleeve also facilitates the handling of small, individual terminals and can provide mechanical support for pins mounted on or through printed circuit boards
- Insulators are high temperature thermoplastic, suitable for most soldering operations



### ORDERING INFORMATION

<b>FIG. 1</b>	<b>Series 305...010800</b>	<b>Receptacle with Sleeve</b>
	305-43-001-30-010800	
<b>FIG. 2</b>	<b>Series 310...010800</b>	<b>Receptacle with Sleeve</b>
	310-43-001-30-010800	

#### SPECIFICATIONS:



Insulating Sleeve tolerance:  $\pm .003$

Packaging: Bulk



XX=Plating Code  
See Below

For  
Electrical, Mechanical  
& Environmental Data,  
See page 264

<b>SPECIFY PLATING CODE XX=</b>			43				
Sleeve (Pin) 			200 $\mu$ " Sn				
Contact (Clip) 			30 $\mu$ " Au				

