



Chipsmall Limited consists of a professional team with an average of over 10 year of expertise in the distribution of electronic components. Based in Hongkong, we have already established firm and mutual-benefit business relationships with customers from,Europe,America and south Asia,supplying obsolete and hard-to-find components to meet their specific needs.

With the principle of “Quality Parts,Customers Priority,Honest Operation,and Considerate Service”,our business mainly focus on the distribution of electronic components. Line cards we deal with include Microchip,ALPS,ROHM,Xilinx,Pulse,ON,Everlight and Freescale. Main products comprise IC,Modules,Potentiometer,IC Socket,Relay,Connector.Our parts cover such applications as commercial,industrial, and automotives areas.

We are looking forward to setting up business relationship with you and hope to provide you with the best service and solution. Let us make a better world for our industry!



## Contact us

Tel: +86-755-8981 8866 Fax: +86-755-8427 6832

Email & Skype: info@chipsmall.com Web: www.chipsmall.com

Address: A1208, Overseas Decoration Building, #122 Zhenhua RD., Futian, Shenzhen, China

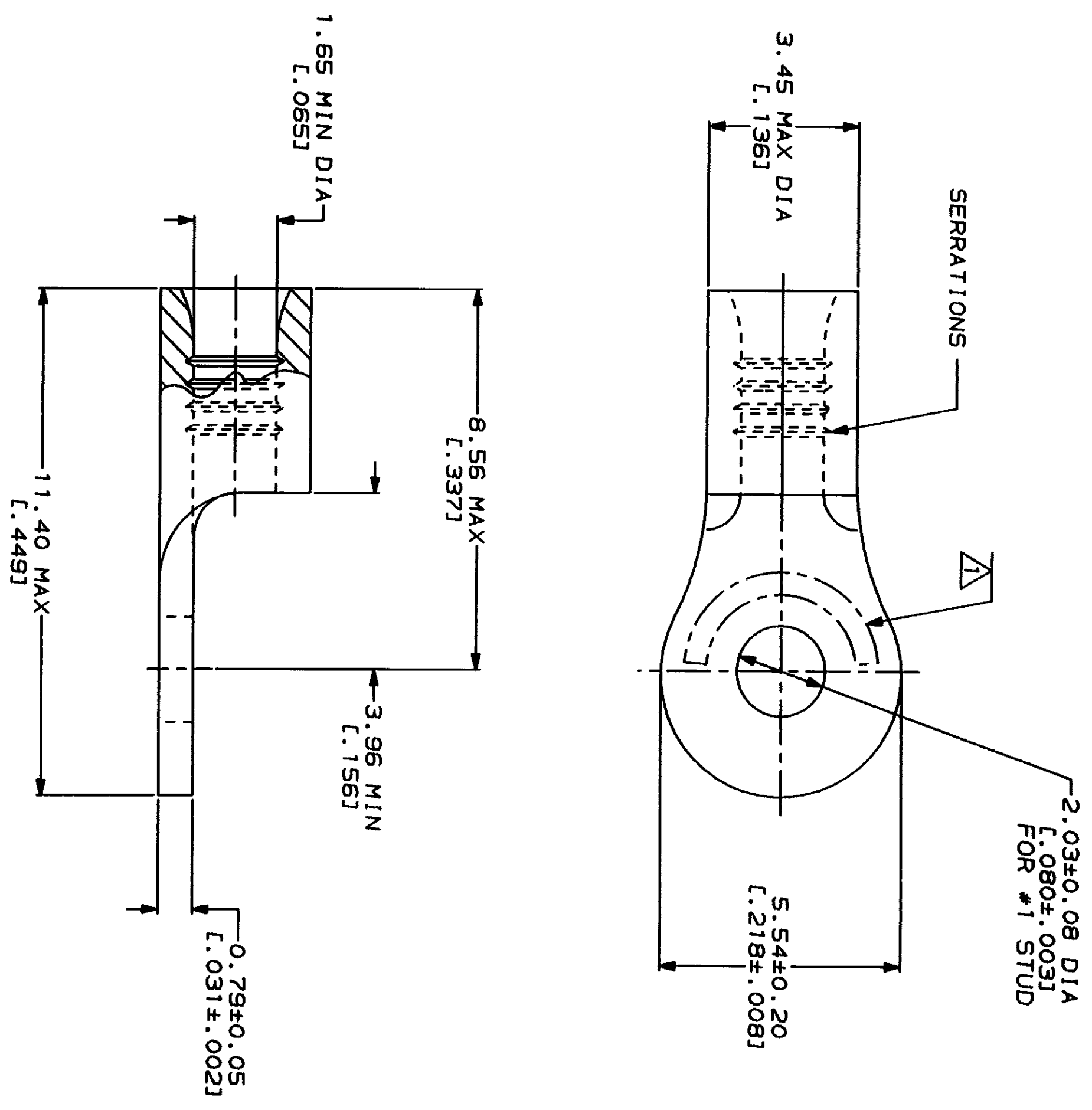


LOC	QTY	REV	ZONE	LTR	DESCRIPTION	DATE	APPD
G	14				REVISED PER 0720-0230-93	2/25/94	AMP

**METRIC**  
DIMENSIONS LISTED IN mm [ INCHES ]

<b>AMP</b> WIRE RANGE	<b>UL</b> E13288 Listed
22-16 AWG STRANDED	22-16 AWG STRANDED
<b>LR7189</b> Certified	MILITARY P/N AND CLASS
NOT CERTIFIED	NOT APPLICABLE

△ STAMP AMP 22-18\* APPROX AS SHOWN  
22-16 TERMINALS ARE STAMPED 22-18 IN  
ACCORDANCE WITH MILITARY SPECIFICATION  
MIL-T-7928, COMMERCIAL WIRE RANGE IS 22-16



**AMP INCORPORATED**  
CUSTOMER SERVICE SYSTEMS

FOR ADDITIONAL PRODUCT INFORMATION OR COPIES OF DRAWINGS AND TECHNICAL DOCUMENTS  
1-800-522-6752  
PRODUCT INFORMATION CENTER

FOR APPLICATION TOOLING INFORMATION  
1-800-722-1111  
TOOLING ASSISTANCE CENTER

FOR ORDER ENTRY  
1-800-526-5142

MAX RECOMMENDED OPERATING TEMPERATURE: 170°C MAX  
VOLTAGE RATING: NOT APPLICABLE  
WIRE CROSS SECTIONAL AREA RANGE: 0.26-1.65mm<sup>2</sup> [509-3,260] CIR MILS STRANDED

DO NOT SCALE PRINT. DIMENSIONS SPECIFIED UNLESS OTHERWISE INDICATED. DIMENSIONS IN MILLIMETERS. TOLERANCES ON DIMENSIONS: 2 PLC DEC # - - 3 PLC DEC # - - ANGLES - - MATERIAL COPPER PER ASTM B-152 ANNEALED

FINISH TIN PLATE  
0.00254[L.000100] MIN THK PER MIL-T-10727

DR 1-27-93 TA BRINKMAN  
CHK 1-27-93 DA PATTERSON  
APPD 1-27-93 DE MILLER  
APPD 1-27-93 JL HECKLEY  
PRODUCT SPEC

AMP  
AMP Incorporated  
Harrisburg, PA 17105-3508

APPLICATION SPEC  
NAME  
TERMINAL, RING TONGUE, BUDGET  
SIZE  
CAGE CODE  
DRAWING NO  
SCALE  
10:1

31087  
PART NO

31087

CUSTOMER DRAWING  
1 OF 1