



Chipsmall Limited consists of a professional team with an average of over 10 year of expertise in the distribution of electronic components. Based in Hongkong, we have already established firm and mutual-benefit business relationships with customers from,Europe,America and south Asia,supplying obsolete and hard-to-find components to meet their specific needs.

With the principle of "Quality Parts,Customers Priority,Honest Operation,and Considerate Service",our business mainly focus on the distribution of electronic components. Line cards we deal with include Microchip,ALPS,ROHM,Xilinx,Pulse,ON,Everlight and Freescale. Main products comprise IC,Modules,Potentiometer,IC Socket,Relay,Connector.Our parts cover such applications as commercial,industrial, and automotives areas.

We are looking forward to setting up business relationship with you and hope to provide you with the best service and solution. Let us make a better world for our industry!



## Contact us

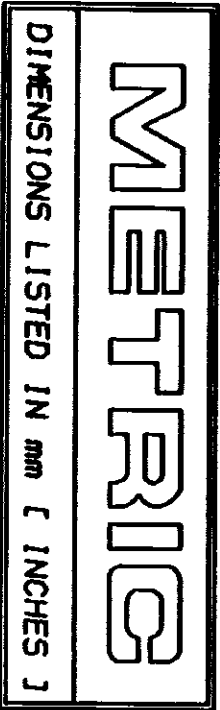
Tel: +86-755-8981 8866 Fax: +86-755-8427 6832

Email & Skype: [info@chipsmall.com](mailto:info@chipsmall.com) Web: [www.chipsmall.com](http://www.chipsmall.com)

Address: A1208, Overseas Decoration Building, #122 Zhenhua RD., Futian, Shenzhen, China

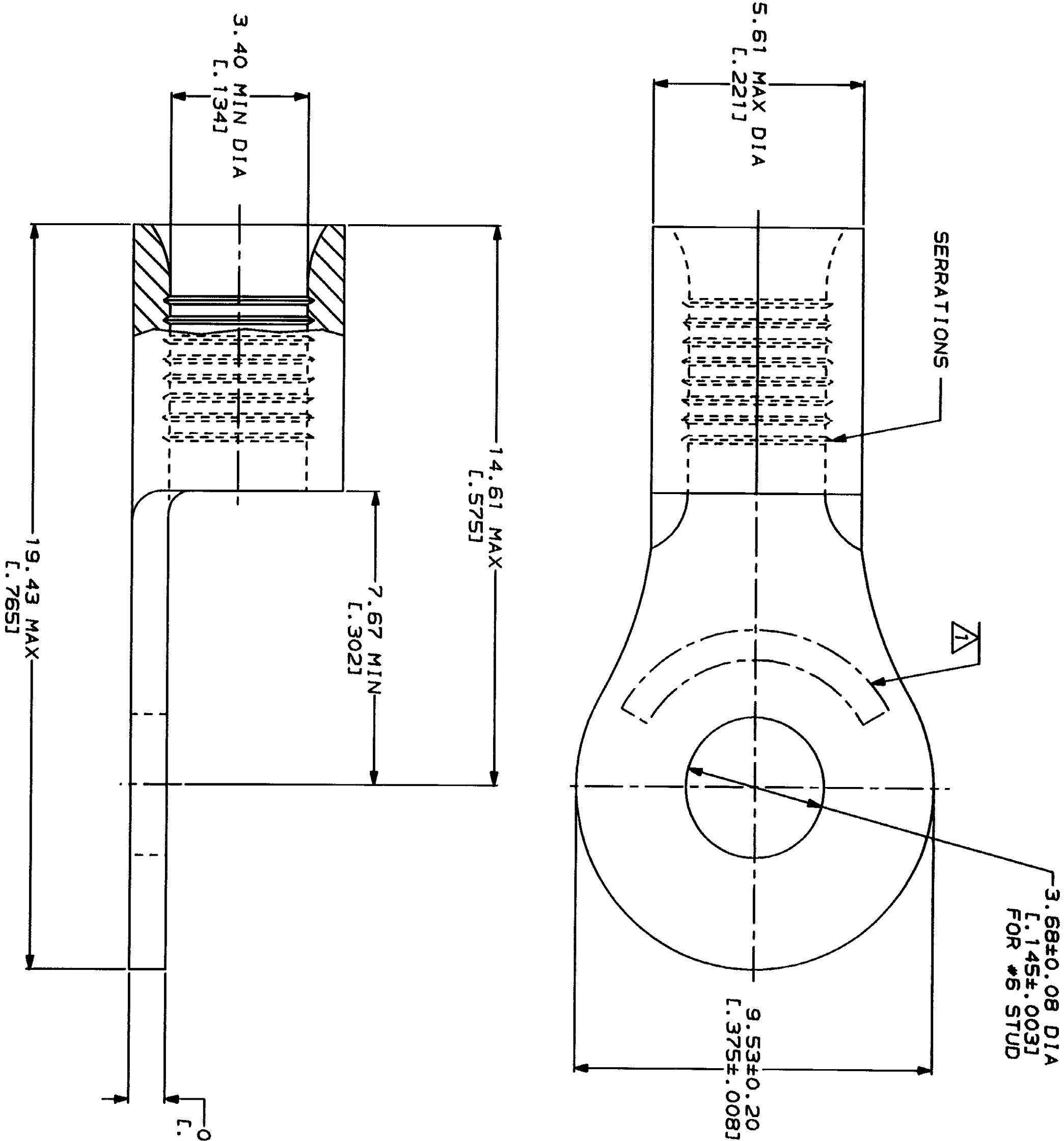


LOC	DIST	ZONE	LTR	REVISIONS	DATE	APPD
G	14					
				REVISED PER 0720-0230-93	2/25/94	DLB



AMP	E13288 Listed
WIRE RANGE	
12-10 AWG STRANDED	12-10 AWG STRANDED
LR7189 Certified	MILITARY P/N AND CLASS
NOT CERTIFIED	NOT APPLICABLE

△ STAMP AMP 12-10\* APPROX AS SHOWN



AMP INCORPORATED  
CUSTOMER SERVICE SYSTEMS

FOR ADDITIONAL  
PRODUCT INFORMATION OR  
COPIES OF DRAWINGS  
AND TECHNICAL DOCUMENTS

FOR APPLICATION  
TOOLING INFORMATION

FOR ORDER ENTRY

MAX RECOMMENDED OPERATING  
TEMPERATURE: 170°C MAX

VOLTAGE RATING:  
NOT APPLICABLE

WIRE CROSS SECTIONAL AREA RANGE:  
2.62-6.64mm² (5,180-13,100) CIR MILS  
STRANDED

THIS DRAWING IS A CONTROLLED DOCUMENT FOR  
AMP INCORPORATED. IT IS SUBJECT TO CHANGE  
WITHOUT NOTICE. FOR THE LATEST REVISION,  
SHOULD BE CONSULTED FOR THE LATEST REVISION.

DO NOT SCALE PRINT.  
UNLESS SPECIFIED  
DIMENSIONS IN - - - - -  
TOLERANCES ON - - - - -  
2 PLC DEC ± - - - - -  
3 PLC DEC ± - - - - -  
ANGLES

MATERIAL  
COPPER PER  
ASTM B-152  
ANNEALED

FINISH  
TIN PLATE  
0.00254(1,000100) MIN  
THK PER MIL-T-10727

DR 2-9-93  
TA BRINKMAN  
CHK 2-9-93  
DA PATTERSON

APPD 2-9-93  
DE MILLER  
APPD 2-9-93  
JL NECKLEY  
PRODUCT SPEC

APPLICATION SPEC  
WEIGHT -

AMP  
AMP Incorporated  
Harrisburg, PA 17125-3608

TERMINAL, RING TONGUE,  
BUDGET

SIZE  
CAGE CODE  
00779  
DRAWING NO  
31112

CUSTOMER DRAWING