



Chipsmall Limited consists of a professional team with an average of over 10 year of expertise in the distribution of electronic components. Based in Hongkong, we have already established firm and mutual-benefit business relationships with customers from,Europe,America and south Asia,supplying obsolete and hard-to-find components to meet their specific needs.

With the principle of “Quality Parts,Customers Priority,Honest Operation,and Considerate Service”,our business mainly focus on the distribution of electronic components. Line cards we deal with include Microchip,ALPS,ROHM,Xilinx,Pulse,ON,Everlight and Freescale. Main products comprise IC,Modules,Potentiometer,IC Socket,Relay,Connector.Our parts cover such applications as commercial,industrial, and automotives areas.

We are looking forward to setting up business relationship with you and hope to provide you with the best service and solution. Let us make a better world for our industry!



Contact us


Tel: +86-755-8981 8866 Fax: +86-755-8427 6832

Email & Skype: info@chipsmall.com Web: www.chipsmall.com

Address: A1208, Overseas Decoration Building, #122 Zhenhua RD., Futian, Shenzhen, China



LOC	DIST	REVISIONS				
G	14	P	LTR	DESCRIPTION	DATE	DWN
			F1	REV PER ECR 08-002293	25JAN08	JR
						APVD
						TM

AMP WIRE RANGE	 Listed FILE E13288
12-10 AWG STRANDED	12-10 AWG STRANDED

- 1

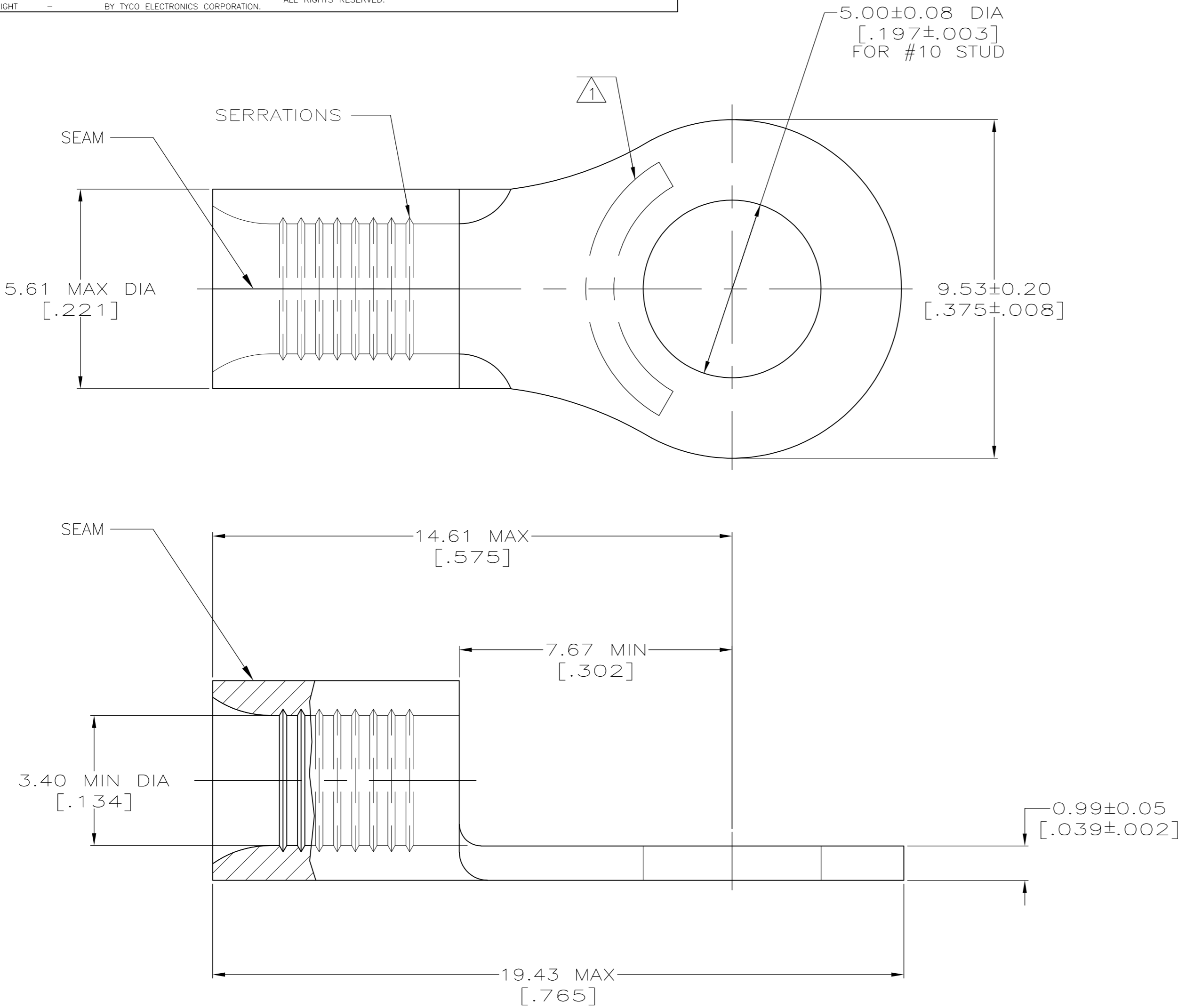
STAMP AMP 12-10* APPROX AS SHOWN
- 2

SEAM FACING UPWARD ON TAPE
- 3

SEAM FACING DOWNWARD ON TAPE
- 4

COPPER PER ASTM B-152, ANNEALED
- 5

TIN PLATE 0.00254 [.000100] MIN THK
PER ASTM B545



50	LOOSE PIECE, BOX	8-31114-2
2500	ON TAPE, REEL <div>3</div>	31114-3
2500	ON TAPE, REEL <div>2</div>	31114-2
-	LOOSE PIECE	31114
QTY	PACKAGE TYPE	PART NO.

AMP INCORPORATED CUSTOMER SERVICE SYSTEMS			MAX RECOMMENDED OPERATING TEMPERATURE: 170°C MAX	THIS DRAWING IS A CONTROLLED DOCUMENT.		DWN TA BRINKMAN 2-8-93	Tyco Electronics Corporation Harrisburg, PA 17105-3608							
FOR ADDITIONAL PRODUCT INFORMATION OR COPIES OF DRAWINGS AND TECHNICAL DOCUMENTS		PRODUCT INFORMATION CENTER 1-800-522-6752	VOLTAGE RATING: N/A	DIMENSIONS: MM [INCHES]	TOLERANCES UNLESS OTHERWISE SPECIFIED: 0 PLC ± - 1 PLC ± - 2 PLC ± - 3 PLC ± - 4 PLC ± - ANGLES ± -	CHK DA PATTERSON 2-8-93	APVD JL MECKLEY 2-8-93	PRODUCT SPEC -	APPLICATION SPEC -	NAME TERMINAL, RING TONGUE, BUDGET -				
										SIZE A2				
FOR APPLICATION TOOLING INFORMATION		TOOLING ASSISTANCE CENTER 1-800-722-1111	CIRCULAR MIL AREA: 2.62-6.64mm² [5,180-13,100] STRANDED		FINISH -			WEIGHT -	CUSTOMER DRAWING	SCALE 10:1	SHEET 1 of 1	REV F1		
FOR ORDER ENTRY 1-800-526-5142		THIS DRAWING IS A CONTROLLED DOCUMENT FOR AMP INCORPORATED. IT IS SUBJECT TO CHANGE AND THE CONTROLLING ENGINEERING ORGANIZATION SHOULD BE CONTACTED FOR THE LATEST REVISION.												