



Chipsmall Limited consists of a professional team with an average of over 10 year of expertise in the distribution of electronic components. Based in Hongkong, we have already established firm and mutual-benefit business relationships with customers from,Europe,America and south Asia,supplying obsolete and hard-to-find components to meet their specific needs.

With the principle of “Quality Parts,Customers Priority,Honest Operation,and Considerate Service”,our business mainly focus on the distribution of electronic components. Line cards we deal with include Microchip,ALPS,ROHM,Xilinx,Pulse,ON,Everlight and Freescale. Main products comprise IC,Modules,Potentiometer,IC Socket,Relay,Connector.Our parts cover such applications as commercial,industrial, and automotives areas.

We are looking forward to setting up business relationship with you and hope to provide you with the best service and solution. Let us make a better world for our industry!



Contact us

Tel: +86-755-8981 8866 Fax: +86-755-8427 6832

Email & Skype: info@chipsmall.com Web: www.chipsmall.com

Address: A1208, Overseas Decoration Building, #122 Zhenhua RD., Futian, Shenzhen, China



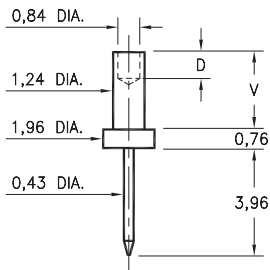
MALE PCB PINS

PRINTED CIRCUIT PINS

3116

3116-X-00-XX-00-00-08-0

Swage mount in 1,32 hole

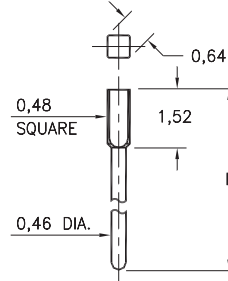


Basic Part Number	Board Thickness	Length V	Depth D
3116-1	0,79	1,30	0,89
3116-2	1,57	2,08	1,57
3116-3	2,39	2,87	1,57
3116-4	3,18	3,68	1,57

X435

X435-X-05-XX-00-00-03-0

Square press-fit in 0,56 plated through-hole

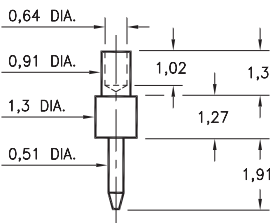


Basic Part Number	Length L
5435-0	7,70
5435-1	5,08
5435-2	10,49
6435-0	7,11

3135

3135-1-00-XX-00-00-08-0

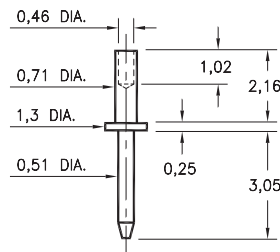
Swage mount in 1,02 hole
For 0,79 thick board



3210

3210-2-00-XX-00-00-08-0

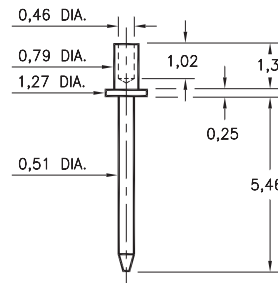
Swage mount in 0,79 hole
For 1,57 thick board



3129

3129-1-00-XX-00-00-08-0

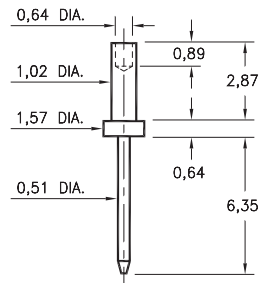
Swage mount in 0,89 hole
For 0,79 thick board



3147

3147-3-00-XX-00-00-08-0

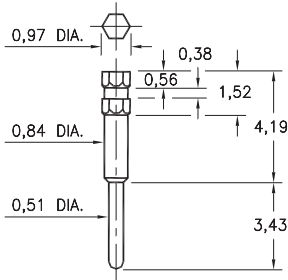
Swage mount in 1,09 hole
For 2,39 thick board



4366

4366-0-00-XX-00-00-03-0

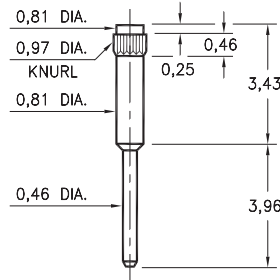
Hex press-fit in 0,86 plated through-hole



1267

1267-0-00-XX-00-00-03-0

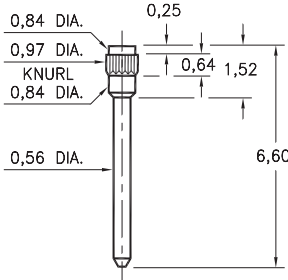
Press-fit in 0,89 mounting hole



7827

7827-0-00-XX-00-00-03-0

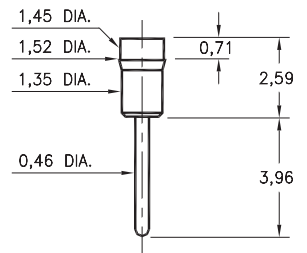
Press-fit in 0,89 mounting hole



1130

1130-0-00-XX-00-00-03-0

Press-fit in 1,45 mounting hole
Pin material is Phosphor Bronze 544 (B2)



SPECIFICATIONS:

Pin Material: Brass Alloy 360, 1/2 Hard
(Except where noted)

Dimensions: Millimeters

Tolerances On: Lengths: $\pm 0,13$
Diameters: $\pm 0,051$
Angles: $\pm 2^\circ$



ORDER CODE: XXXX - X - 0X - XX - 00 - 00 - XX - 0

BASIC PART #

SPECIFY PIN FINISH:

- 01 5,08 μ m TIN/LEAD OVER NICKEL
- ◆ 80 5,08 μ m TIN OVER NICKEL (RoHS)
- ◆ 15 0,25 μ m GOLD OVER NICKEL (RoHS)
- ◆ 21 0,51 μ m GOLD OVER NICKEL (RoHS)
- ◆ 34 1,27 μ m GOLD OVER NICKEL (RoHS)

