



Chipsmall Limited consists of a professional team with an average of over 10 year of expertise in the distribution of electronic components. Based in Hongkong, we have already established firm and mutual-benefit business relationships with customers from,Europe,America and south Asia,supplying obsolete and hard-to-find components to meet their specific needs.

With the principle of “Quality Parts,Customers Priority,Honest Operation,and Considerate Service”,our business mainly focus on the distribution of electronic components. Line cards we deal with include Microchip,ALPS,ROHM,Xilinx,Pulse,ON,Everlight and Freescale. Main products comprise IC,Modules,Potentiometer,IC Socket,Relay,Connector.Our parts cover such applications as commercial,industrial, and automotives areas.

We are looking forward to setting up business relationship with you and hope to provide you with the best service and solution. Let us make a better world for our industry!



## Contact us

Tel: +86-755-8981 8866 Fax: +86-755-8427 6832

Email & Skype: info@chipsmall.com Web: www.chipsmall.com

Address: A1208, Overseas Decoration Building, #122 Zhenhua RD., Futian, Shenzhen, China



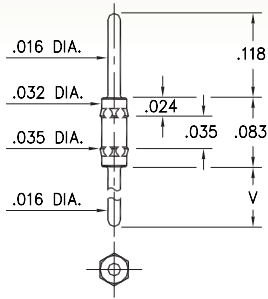
# MALE PCB PINS

## PRINTED CIRCUIT PINS

### 4006

4006-X-00-XX-00-00-03-0

Hex press-fit in .034 mounting hole

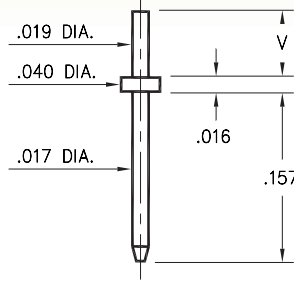


Basic Part Number	Length V
4006-0	.118
4006-1	.188
4006-2	.288

### 3121

3121-X-00-XX-00-00-08-0

Solder mount in .023 mounting hole  
Material is annealed.

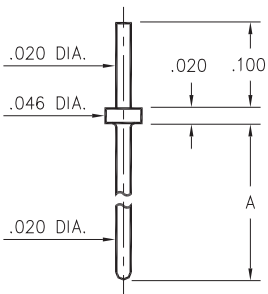


Basic Part Number	Substrate Thickness	Length V
3121-1	.025	.061
3121-2	.040	.075

### 3128

3128-X-00-XX-00-00-08-0

Solder mount in .024 min. mounting hole

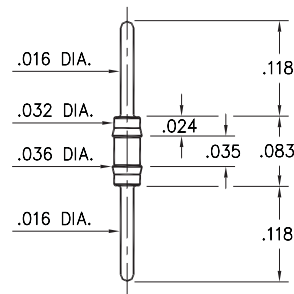


Basic Part Number	Length A
3128-1	.250
3128-2	.425
3128-3	.525
3128-4	.550
3128-5	.930

### 3006

3006-0-00-XX-00-00-03-0

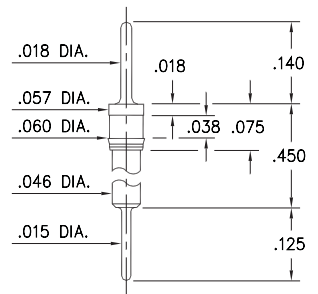
Press-fit in .034 mounting hole



### 8885

8885-0-00-XX-00-00-03-0

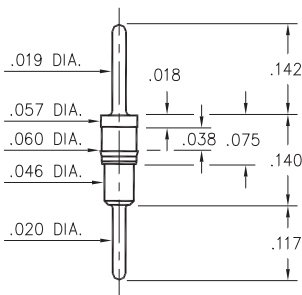
Press-fit in .057 mounting hole



### 6218

6218-0-00-XX-00-00-03-0

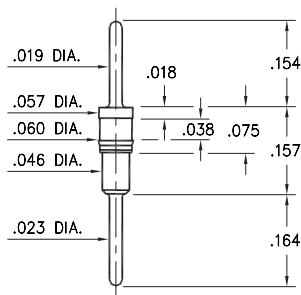
Press-fit in .057 mounting hole



### 5012

5012-0-00-XX-00-00-03-0

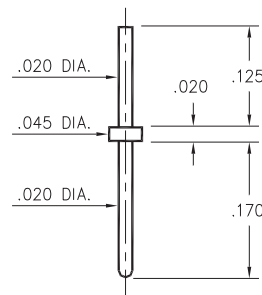
Press-fit in .057 mounting hole



### 9081

9081-0-00-XX-00-00-08-0

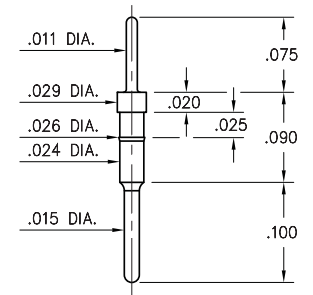
Solder mount in .024 mounting hole



### 3039

3039-0-00-15-00-00-03-0

Press-fit in .025 mounting hole



#### SPECIFICATIONS:

**Pin Material:** Brass Alloy 360, 1/2 Hard  
(Except where noted)

**Dimensions:** Inches

**Tolerances On:** Lengths:  $\pm .005$   
Diameters:  $\pm .002$   
Angles:  $\pm 2^\circ$



ORDER CODE: XXXX - X - 00 - XX - 00 - 00 - XX - 0

BASIC PART #

SPECIFY PIN FINISH:

- 01 200  $\mu$ m TIN/LEAD OVER NICKEL
- ◆ 80 200  $\mu$ m TIN OVER NICKEL (RoHS)
- ◆ 15 10  $\mu$ m GOLD OVER NICKEL (RoHS)
- ◆ 21 20  $\mu$ m GOLD OVER NICKEL (RoHS)
- ◆ 34 50  $\mu$ m GOLD OVER NICKEL (RoHS)

