



Chipsmall Limited consists of a professional team with an average of over 10 year of expertise in the distribution of electronic components. Based in Hongkong, we have already established firm and mutual-benefit business relationships with customers from,Europe,America and south Asia,supplying obsolete and hard-to-find components to meet their specific needs.

With the principle of "Quality Parts,Customers Priority,Honest Operation,and Considerate Service",our business mainly focus on the distribution of electronic components. Line cards we deal with include Microchip,ALPS,ROHM,Xilinx,Pulse,ON,Everlight and Freescale. Main products comprise IC,Modules,Potentiometer,IC Socket,Relay,Connector.Our parts cover such applications as commercial,industrial, and automotives areas.

We are looking forward to setting up business relationship with you and hope to provide you with the best service and solution. Let us make a better world for our industry!



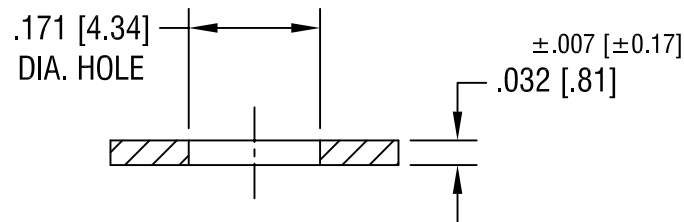
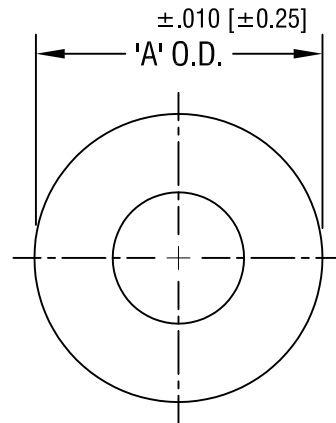
Contact us

Tel: +86-755-8981 8866 Fax: +86-755-8427 6832

Email & Skype: info@chipsmall.com Web: www.chipsmall.com

Address: A1208, Overseas Decoration Building, #122 Zhenhua RD., Futian, Shenzhen, China





'A' O.D. DIM.	MAT'L: FIBRE	MAT'L: NYLON
.312 [7.92]	3124	3127
.375 [9.52]	3125	-
.437 [11.09]	3126	3128

KEYSTONE ELECTRONICS CORP.

ASTORIA, N.Y. 11105-2017

PART NAME			
FLAT WASHER			
MATERIAL			
AS NOTED			
FINISH -		DRN BY	DATE
		BOONE	8.23.82
		APP'D	SCALE
		LN	4X
TOLERANCES INCH [MM]		CODE	DWG NO.
DECIMAL ± .005 [± 0.15]		C/M	3124-3128
ANGULAR ± 1°			
UNLESS OTHERWISE SPECIFIED			

9.15.94 | CHANGE AS PER ECR 94-053 | A

DATE | DESCRIPTION | REV.