



Chipsmall Limited consists of a professional team with an average of over 10 year of expertise in the distribution of electronic components. Based in Hongkong, we have already established firm and mutual-benefit business relationships with customers from,Europe,America and south Asia,supplying obsolete and hard-to-find components to meet their specific needs.

With the principle of “Quality Parts,Customers Priority,Honest Operation,and Considerate Service”,our business mainly focus on the distribution of electronic components. Line cards we deal with include Microchip,ALPS,ROHM,Xilinx,Pulse,ON,Everlight and Freescale. Main products comprise IC,Modules,Potentiometer,IC Socket,Relay,Connector.Our parts cover such applications as commercial,industrial, and automotives areas.

We are looking forward to setting up business relationship with you and hope to provide you with the best service and solution. Let us make a better world for our industry!



Contact us

Tel: +86-755-8981 8866 Fax: +86-755-8427 6832

Email & Skype: info@chipsmall.com Web: www.chipsmall.com

Address: A1208, Overseas Decoration Building, #122 Zhenhua RD., Futian, Shenzhen, China



NUMBER C-316062
METRIC
三角錐 (3rd ANGLE PROJECTION)

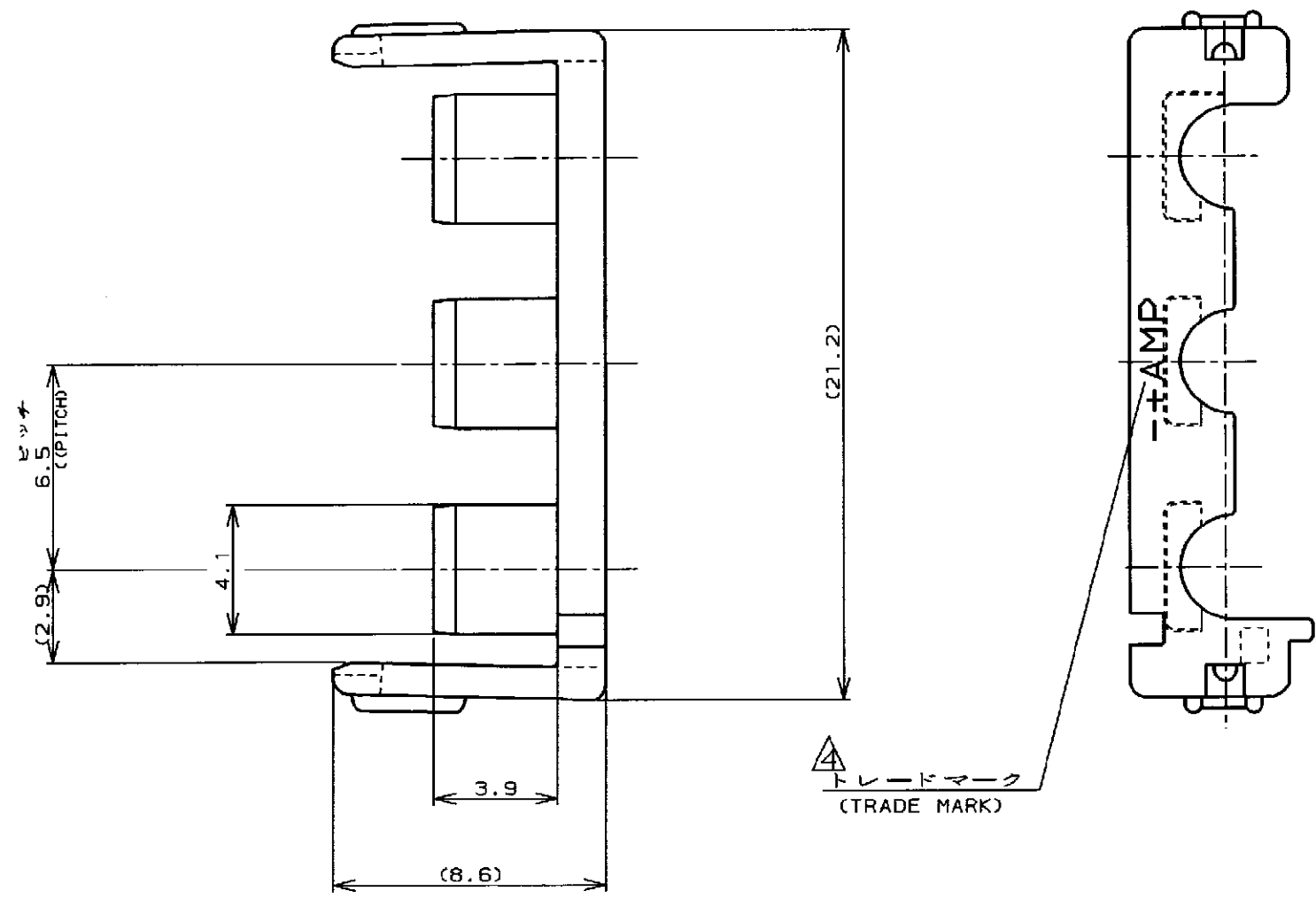
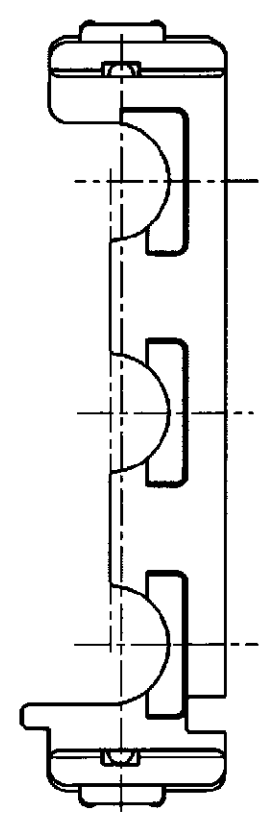
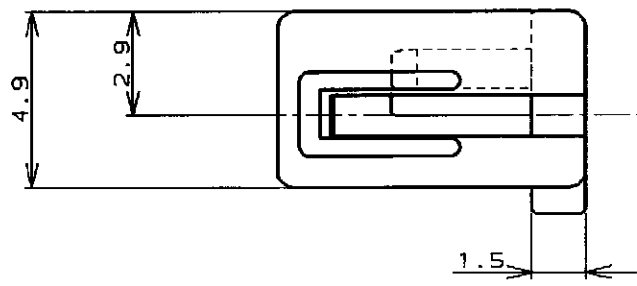


表 2 (TABLE 2)

トレードマーク (TRADE MARK)	生産場所 (MANUFACTURING PLACE)
-AMP OR AMP	日本 (JAPAN)
--+AMP OR AMP	中国 (CHINA (PRC))



プラグハウジング (PLUG HOUSING)	3	179938-□
	6	□-179862-□
適用製品 (APPLICABLE PRODUCT)	極数 (Pos.)	型番 (P/N)

表 1
TABLE. 1

自然色 (NATURAL)	3	316062-1
プレート色調 (PLATE COLOR)	極数 (Pos.)	型番 (P/N)

- 注;
 1. 通用製品規格: 108-5410
 2. 通用製品型番: 表 1 参照
 3. 取扱説明書: 411-5638
 ▲表 2 参照
- NOTES;
 1. PRODUCT SPEC: 108-5410
 2. APPLICABLE CONN, P/N: SEE FIG. 1
 3. INSTRUCTION SHEET: 411-5638
 ▲SEE TABLE 2

LTR	変更 (REVISION RECORD)	DR	CHK	DATE
A	変更 FJ00-0953-98	T.Y.	As	22.AUG '95
O	作成 FJ00-2472-95	N.Y.	Y.K.	22.AUG '95

Copyright ©1993年 AMP (Japan) LTD. ALL RIGHTS RESERVED.		Copyright ©1993 AMP (Japan) LTD. ALL RIGHTS RESERVED.	
相合電線断面 (WIRE RANGE)	絶縁外径 (INSULATION DIA.)	名称 (NAME) アンパ パワー ダブルロック コネクタ	
— mm ² (AWG -)	1.3 ~ 2.8 mmφ	3極 6.5mmピッチ ダブルロック プレート	
材料 (MATERIAL) 6/6 ナイロン (UL94V-0) 5/5 NYLON GLASS FILLED	仕上 (FINISH)	AMP POWER DOUBLE LOCK CONN. 6.5mm PITCH DBL LOCK PLATE 3Pos	
DR. 22.AUG '95 N.YAMASAKI	DE. 22.AUG '95 Y.KASHIWA	一般公差 (GENERAL TOLERANCE)	
CHK. 22.AUG '95 Y.KASHIWA	APP. 22.AUG '95 Y.KASHIWA	10以下: ±0.2 10を超え 30以下: ±0.25 30を超え 100以下: ±0.3 角 度: ±3°	

AMP		日本エー・エム・ピー株式会社 Tokyo, Japan	
LOC	番号 (No.)	C-316062	
B	J	尺度 (SCALE)	REV. A
SHEET		1 OF 1	

PRINT DIST
単位: mm DIMENSIONS IN MM. DO NOT SCALE PRINT