



Chipsmall Limited consists of a professional team with an average of over 10 year of expertise in the distribution of electronic components. Based in Hongkong, we have already established firm and mutual-benefit business relationships with customers from,Europe,America and south Asia,supplying obsolete and hard-to-find components to meet their specific needs.

With the principle of “Quality Parts,Customers Priority,Honest Operation,and Considerate Service”,our business mainly focus on the distribution of electronic components. Line cards we deal with include Microchip,ALPS,ROHM,Xilinx,Pulse,ON,Everlight and Freescale. Main products comprise IC,Modules,Potentiometer,IC Socket,Relay,Connector.Our parts cover such applications as commercial,industrial, and automotives areas.

We are looking forward to setting up business relationship with you and hope to provide you with the best service and solution. Let us make a better world for our industry!



Contact us

Tel: +86-755-8981 8866 Fax: +86-755-8427 6832

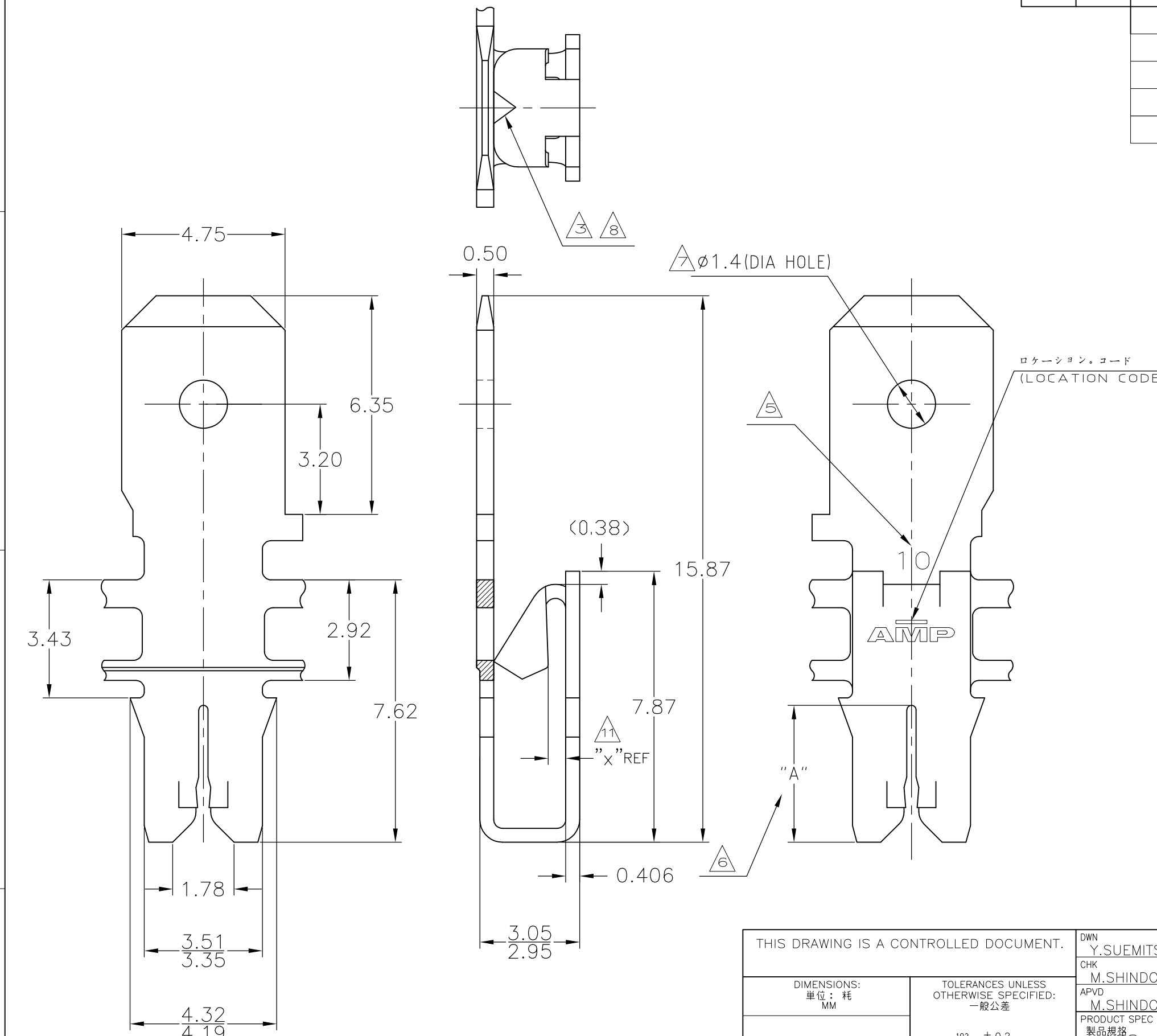
Email & Skype: info@chipsmall.com Web: www.chipsmall.com

Address: A1208, Overseas Decoration Building, #122 Zhenhua RD., Futian, Shenzhen, China



THIS DRAWING IS UNPUBLISHED. RELEASED FOR PUBLICATION
 © COPYRIGHT BY TYCO ELECTRONICS CORPORATION. ALL RIGHTS RESERVED.

LOC	DIST	REVISIONS						
		P	LTR	DESCRIPTION	DATE	DWN	APVD	
J	—		E1	REVISED	ECR-05-003146	16MAY05	J.S	N.Y
			E2	REVISED	ECR-05-016374	24NOV05	J.S	N.Y
			F	REVISED	ECR-06-018980	08AUG06	S.I	N.Y
			F1	REVISED	ECR-08-011809	09MAY08	S.I	S.M
			F2	REVISED PER ECO-09-021510		02SEP09	KK	AEG



注記: 1. 連続状の端子のピッチは、5.59 ±0.08 である。
 △ 圧接するマグネットワイヤーは軟銅線のみであり、
 スロットは1本のマグネットワイヤーのみ圧接できる。
 △ 3 ポークイン部は、0.5~0.8mm² (AWG#20~#18) の単線、錫コート線、
 または半田付したより線を装着できる。但しポークインタブ端子のかん合は不可
 4. キャビティに圧入後、タブ部を45°~90°まで曲げるか、
 ポッティングによる封入を行ない、
 △ 嵌合リセプタクルを引き抜く時に端子が抜けないようにする。
 適用ワイヤー毎のスロットサイズの I.D. ナンバー。
 △ 6 スロット高さについては、TABLE参照のこと。
 △ 7 穴の有無については、TABLE参照のこと。
 △ 8 ポークインタブ端子をかん合できる。但しポークインワイヤーの装着は不可
 △ 9 適用リセプタクル端子: 187シリーズポジティブロックEX,187シリーズFASTON
 ×尚、かん合時はマグメイト端子に変形がない様注意すること。
 10. ポークインかん合及び187リセプタクルかん合を併用は不可
 △ 11 表参照

NOTES: 1. CONTINUOUS STRIP ON REELS WITH TERMINALS
 LOCATED ON 5.59 ±0.08 CENTERS.
 △ 2 SLOT ACCEPTS SINGLE COPPER MAGNET WIRE ONLY.
 △ 3 POKE-IN ACCEPTS A 0.5~0.8mm² (#20~#18)AWG
 SOLID OR FUSED STRANDED LEAD WIRE.BUT POKE-IN TAB IS NOT
 APPLICABLE.
 4. AFTER INSERTION INTO PLASTIC HOLDER TAB PORTION
 MUST BE BENT OVER 45 ° TO 90 ° OR POTTED-IN TO PREVENT
 PULL-OUT WHEN MATING RECEPTACLE IS DISCONNECTED.
 △ 5 IDENTIFICATION NUMBER FOR MAGNET WIRE SLOT SIZE.
 △ 6 SLOT HEIGHT:SEE TABLE.
 △ 7 HOLE IN TAB:SEE TABLE.
 △ 8 APPLICABLE POKE-IN TAB.BUT POKE-IN TWIRE IS NOT APPLICABLE.
 △ 9 APPLICABLE RECEPTACLE CONT: 187 SERIES POSITIVE LOCK EX,
 187SERIES FASTON.
 ×WHEN RECEPTACLE MATE WITH 187 TAB,MUST ATTEND NO DAMAGE TO
 MAG-MATE TERMINAL.
 10 BOTH OF POKE-IN MATING AND 187 RECEPTACLE
 MATING IS NOT AVAILABLE
 △ 11 SEE TABLE
 △ OBSOLETE PARTS: OBSOLETE CIS STREAMLINING PER D.RENAUD/D.SINISI

AS FOR THE P/N,SEE SHEET 2 OF 2

THIS DRAWING IS A CONTROLLED DOCUMENT.		DWN	Y.SUEMITSU	25.SEP.'01	tyco Electronics	Tyco Electronics AMP K.K. Kawasaki, Japan			
DIMENSIONS: 単位: 耗 MM		CHK	M.SHINDO	25.SEP.'01		NAME 名称	STD MAG-MATE POKE-IN WITH .187 TAB		
TOLERANCES UNLESS OTHERWISE SPECIFIED: 一般公差		APVD	M.SHINDO	25.SEP.'01	PRODUCT SPEC 製品規格		スタンダード マグメイト .187 タブ付 ポークイン端子		
10? ± 0.2 30? >10 ± 0.25		APPLICATION SPEC 取付適用規格	108-5500			SIZE	CAGE CODE	DRAWING NO 番号	RESTRICTED TO
MATERIAL 材料 黄銅(BRASS)	FINISH 仕上 SEE TABLE	WEIGHT	0.383g/ea		A3	00779	G-316300	—	
CUSTOMER DRAWING					SCALE 尺度	8:1	SHEET 1	OF 2	REV F2

THIS DRAWING IS UNPUBLISHED. RELEASED FOR PUBLICATION
 © COPYRIGHT BY TYCO ELECTRONICS CORPORATION. ALL RIGHTS RESERVED.

LOC	DIST	REVISIONS 変更		
J	—	P	LTR	DESCRIPTION
		—	—	SEE SHEET 1
		DATE	DWN	APVD
		—	—	—

			↑	0.4	穴有り (WITH HOLE)	錫めっき仕上 (TIN PLATED)	4.57	33	1.20φ~1.30φ	6-316300-7	
△12	OBSOLETE			0.4	穴有り (WITH HOLE)	錫めっき仕上 (TIN PLATED)	4.57	24	0.90φ~1.15φ	6-316300-6	
△12	OBSOLETE			0.4	穴有り (WITH HOLE)	錫めっき仕上 (TIN PLATED)	4.06	15	0.64φ~0.89φ	6-316300-5	
△12	OBSOLETE	△ POKE-IN TAB APPLICABLE		0.4	穴有り (WITH HOLE)	錫めっき仕上 (TIN PLATED)	4.06	10	0.35φ~0.63φ	6-316300-4	
			↑	0.5	穴無し (WITHOUT HOLE)	錫めっき仕上 (TIN PLATED)	4.57	24	0.90φ~1.15φ	2-316300-9	
				0.5	穴無し (WITHOUT HOLE)	錫めっき仕上 (TIN PLATED)	4.06	15	0.64φ~0.89φ	2-316300-8	
		△ POKE-IN TAB NOT APPLICABLE		0.5	穴無し (WITHOUT HOLE)	錫めっき仕上 (TIN PLATED)	4.06	10	0.35φ~0.63φ	2-316300-7	
OBSOLETE					穴無し (WITHOUT HOLE)	半田めっき仕上 (TIN-LEAD PLATED)	4.57	24	0.90φ~1.30φ	316300-9	
OBSOLETE					穴無し (WITHOUT HOLE)	半田めっき仕上 (TIN-LEAD PLATED)	4.06	15	0.64φ~0.89φ	316300-8	
OBSOLETE					穴無し (WITHOUT HOLE)	半田めっき仕上 (TIN-LEAD PLATED)	4.06	10	0.35φ~0.63φ	316300-7	
			↑	0.5	穴有り (WITH HOLE)	錫めっき仕上 (TIN PLATED)	4.57	24	0.90φ~1.15φ	316300-6	
				0.5	穴有り (WITH HOLE)	錫めっき仕上 (TIN PLATED)	4.06	15	0.64φ~0.89φ	316300-5	
		△ POKE-IN TAB NOT APPLICABLE		0.5	穴有り (WITH HOLE)	錫めっき仕上 (TIN PLATED)	4.06	10	0.35φ~0.63φ	316300-4	
OBSOLETE					穴有り (WITH HOLE)	半田めっき仕上 (TIN-LEAD PLATED)	4.57	24	0.90φ~1.30φ	316300-3	
OBSOLETE					穴有り (WITH HOLE)	半田めっき仕上 (TIN-LEAD PLATED)	4.06	15	0.64φ~0.89φ	316300-2	
OBSOLETE					穴有り (WITH HOLE)	半田めっき仕上 (TIN-LEAD PLATED)	4.06	10	0.35φ~0.63φ	316300-1	
		ポーキン部かん合 MATING TO POKE-IN	△11 "X" REF	△7	タブ穴 (HOLE IN TAB)	仕上 (FINISH)	△6 "A"	△5	1. Dマーク (I.D MARK)	△2 ワイヤレンジ(导体径) {WIRE RANGE(BARE WIRE DIA)}	型番 (PART No.)

△9 TABLE 1

187 SERIES POSITIVE LOCK EX	STRAIGHT TYPE	173722-1
		173723-1
		173724-X
		173725-X
	FLAG TYPE	175019-1

THIS DRAWING IS A CONTROLLED DOCUMENT.		DWN Y.SUEMITSU 25.SEP.'01	tyco Electronics	Tyco Electronics AMP K.K. Kawasaki, Japan	
DIMENSIONS: 単位: 耗 MM		CHK M.SHINDO 25.SEP.'01		NAME	
TOLERANCES UNLESS OTHERWISE SPECIFIED: 一般公差		APVD M.SHINDO 25.SEP.'01	STD MAG-MATE POKE-IN WITH .187 TAB		
MATERIAL 材料		PRODUCT SPEC 製品規格	SIZE	CAGE CODE	DRAWING NO 番号
FINISH 仕上		APPLICATION SPEC 取付適用規格	A3	00779	G-316300
		WEIGHT	RESTRICTED TO		—
CUSTOMER DRAWING			SCALE 尺度 1:1	SHEET 2 OF 2	REV F2