



Chipsmall Limited consists of a professional team with an average of over 10 year of expertise in the distribution of electronic components. Based in Hongkong, we have already established firm and mutual-benefit business relationships with customers from,Europe,America and south Asia,supplying obsolete and hard-to-find components to meet their specific needs.

With the principle of “Quality Parts,Customers Priority,Honest Operation,and Considerate Service”,our business mainly focus on the distribution of electronic components. Line cards we deal with include Microchip,ALPS,ROHM,Xilinx,Pulse,ON,Everlight and Freescale. Main products comprise IC,Modules,Potentiometer,IC Socket,Relay,Connector.Our parts cover such applications as commercial,industrial, and automotives areas.

We are looking forward to setting up business relationship with you and hope to provide you with the best service and solution. Let us make a better world for our industry!



Contact us

Tel: +86-755-8981 8866 Fax: +86-755-8427 6832

Email & Skype: info@chipsmall.com Web: www.chipsmall.com

Address: A1208, Overseas Decoration Building, #122 Zhenhua RD., Futian, Shenzhen, China



deRFgateway for ARM based radio modules

Datasheet

- The deRFgateway is a development and application platform for dresden elektronik radio modules based on ARM microcontroller.
- The deRFgateway supports pluggable dresden elektronik radio modules.
- Useful for Gateway function is the onboard Ethernet interface on deRFgateway, only available in combination with ARM based radio modules.
- The USB interface allows the radio module communication with a host PC or notebook.
- The platform can be powered over USB, DC-Plug or battery.
- Onboard sensors for transmission of environmental data like temperature, luminosity and acceleration.
- Onboard memory sufficient for data storage and over-the-air firmware updates.

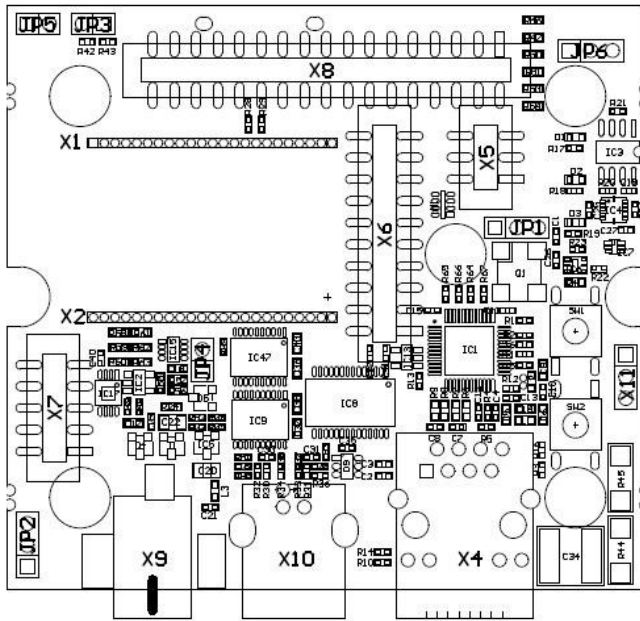


Technical Data

Dimensions	70 x 68 x 33 mm
IP protection	IP 00
Operating temperature	-40 to +85°C
Control and display elements	2x Buttons and 3x LED
Power supply	DC: 5 VDC USB: 5 VDC over USB Battery: 3 x AA
Power consumption	I _{idle} < 17 mA deRFgateway with deRFarm7 module and Ethernet deactivated I _{idle} = 40 mA (typ.) I _{TxRxOn} = 54 mA (typ.) deRFgateway with deRFarm7 module with Ethernet and 100BASE-TX Connection I _{idle} = 161 mA (typ.) I _{TxRxOn} = 175 mA (typ.)
Interfaces	JTAG (AVR & ARM), Debug, USB, Ethernet, I2C, UART, SPI, ADC
Onboard Sensors	Temperature, Luminosity, Acceleration
Onboard Memory	4 Mbit Serial Flash
Supported Radio Modules	deRFarm7 series (pluggable)
Certification	CE pending (The deRFgateway is intended for laboratory, development, demonstration or evaluation purposes only)

Technical Data

Board Overlay



Top View deRFgateway

- X1 & X2: Radio Module
- X4: Ethernet RJ45
- X5: Debug & Trace
- X6: JTAG for ARM
- X7: JTAG for AVR
- X8: 34 Pin User Interface
- X9: DC
- X10: USB Type-B

- JP1: Acc. INT or SW2
- JP2: Bat or DC/USB
- JP3: VBAT monitor
- JP4: RST Supervisor
- JP5: VCC module
- JP6: SW1

Overlay

Scope of delivery

deRFgateway for ARM

Accessories (optional)

RS232 level shifter

DC power supply 5 V / 1.2 A

Board variants

deRFnode for ARM

deRFnode for AVR/ARM

Order No.

BN-031633

BN-028560

BN-023431

BN-031632

BN-031634

Order Information

Variants

More information about the variants is described in detail in the user manual.

Order online: <https://shop.dresden-elektronik.de>

Contact