



Chipsmall Limited consists of a professional team with an average of over 10 year of expertise in the distribution of electronic components. Based in Hongkong, we have already established firm and mutual-benefit business relationships with customers from,Europe,America and south Asia,supplying obsolete and hard-to-find components to meet their specific needs.

With the principle of “Quality Parts,Customers Priority,Honest Operation,and Considerate Service”,our business mainly focus on the distribution of electronic components. Line cards we deal with include Microchip,ALPS,ROHM,Xilinx,Pulse,ON,Everlight and Freescale. Main products comprise IC,Modules,Potentiometer,IC Socket,Relay,Connector.Our parts cover such applications as commercial,industrial, and automotives areas.

We are looking forward to setting up business relationship with you and hope to provide you with the best service and solution. Let us make a better world for our industry!



Contact us

Tel: +86-755-8981 8866 Fax: +86-755-8427 6832

Email & Skype: info@chipsmall.com Web: www.chipsmall.com

Address: A1208, Overseas Decoration Building, #122 Zhenhua RD., Futian, Shenzhen, China



deRFnode for AVR and ARM based radio modules

Datasheet

- The deRFnode is a development and application platform optimized for dresden elektronik radio modules based on AVR and ARM microcontrollers.
- The deRFnode platform supports pluggable dresden elektronik radio modules.
- Designed for low power current consumption.
- The serial USB interface allows the radio module communication with a host PC or notebook.
- The platform can be powered over USB, DC-Plug or battery.
- Onboard sensors for transmission of environmental data like temperature, luminosity and acceleration.
- Onboard memory sufficient for data storage and over-the-air firmware updates.

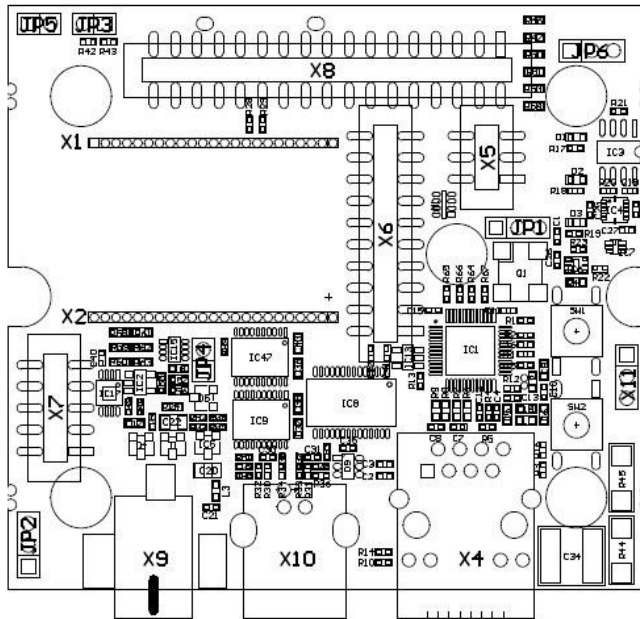


Technical Data

Dimensions	70 x 68 x 33 mm
IP protection	IP 00
Operating temperature	-40 to +85°C
Control and display elements	2x Buttons and 3x LED
Power supply	DC: 5 VDC USB: 5 VDC over USB Battery: 3 x AA
Power consumption	deRFnode with deRFmega128 radio module I _{sleep} = 10 µA I _{idle} = 10 mA I _{TxRxOn} = 28 mA (TXpwr = +3 dBm)
Interfaces	JTAG (AVR & ARM), Debug, USB, I2C, UART, SPI, ADC
Onboard Sensors	Temperature, Luminosity, Acceleration
Onboard Memory	4 Mbit Serial Flash
Supported Radio Modules	deRFarm7 series (pluggable), deRFmega128 series (pluggable), deRFmega256 series (pluggable), deRFsam3 series (pluggable)
Certification	CE

Technical Data

Board Overlay



Top View deRFnode

- X1 & X2: Radio Module
- X4: Ethernet RJ45
- X5: Debug & Trace
- X6: JTAG for ARM
- X7: JTAG for AVR
- X8: 34 Pin User Interface
- X9: DC
- X10: USB Type-B

- JP1: Acc. INT or SW2
- JP2: Bat or DC/USB
- JP3: VBAT monitor
- JP4: RST Supervisor
- JP5: VCC module
- JP6: SW1

Overlay

Scope of delivery

deRFnode for AVR/ARM

Accessories (optional)

RS232 level shifter
DC power supply 5 V / 1.2 A

Board variants

deRFgateway for ARM
deRFnode for ARM

Order No.

BN-031634

BN-028560
BN-023431

BN-031633
BN-031632

Order Information

Variants

More information about the variants are described in detail in the user manual.
Order online: <https://shop.dresden-elektronik.de>

Contact