



Chipsmall Limited consists of a professional team with an average of over 10 year of expertise in the distribution of electronic components. Based in Hongkong, we have already established firm and mutual-benefit business relationships with customers from,Europe,America and south Asia,supplying obsolete and hard-to-find components to meet their specific needs.

With the principle of "Quality Parts,Customers Priority,Honest Operation,and Considerate Service",our business mainly focus on the distribution of electronic components. Line cards we deal with include Microchip,ALPS,ROHM,Xilinx,Pulse,ON,Everlight and Freescale. Main products comprise IC,Modules,Potentiometer,IC Socket,Relay,Connector.Our parts cover such applications as commercial,industrial, and automotives areas.

We are looking forward to setting up business relationship with you and hope to provide you with the best service and solution. Let us make a better world for our industry!



Contact us

Tel: +86-755-8981 8866 Fax: +86-755-8427 6832

Email & Skype: info@chipsmall.com Web: www.chipsmall.com

Address: A1208, Overseas Decoration Building, #122 Zhenhua RD., Futian, Shenzhen, China





(images/317010003 1.jpg)

433MHz wireless ISM transceiver module

SKU: 317010003



(https://www.kickstarter.com/projects/seeed/wio-link-3-steps-5-minutes-build-your-iot-applicat/description?ref=banner_depot)

Description

WT-4432G are highly integrated wireless ISM transceiver module. Very low receive sensitivity (-121dBm/1200bps), coupled with industry leading +20dBm output power ensures extended range and improved link performance. Built-in antenna diversity and support for frequency hopping can be used to further extend range and enhance performance.

Features

- Frequency Range: 433 MHz
(other frequencies need to be customized)
- Sensitivity = -121 dBm at 1200bps
- Max output power: 20dBm
- 85mA@+20dBm transmit
- Data Rate = 0.123 to 256 kbps
- FSK, GFSK = 1.8 to 3.6 V
- Ultra low pK and OOK modulation
- Power Suower shutdown mode
- Digital RSSI
- Wake-up timer
- Auto-frequency calibration (AFC)
- Configurable packet handler

- Antenna diversity and TR switch
- Preamble detector
- TX and RX 64 byte FIFOs
- Low battery detector
- Temperature sensor and 8-bit
- -40 to +85 °C temperature range
- Integrated voltage regulators
- Frequency hopping capability
- Power-on-reset (POR)
- On-chip crystal tuning

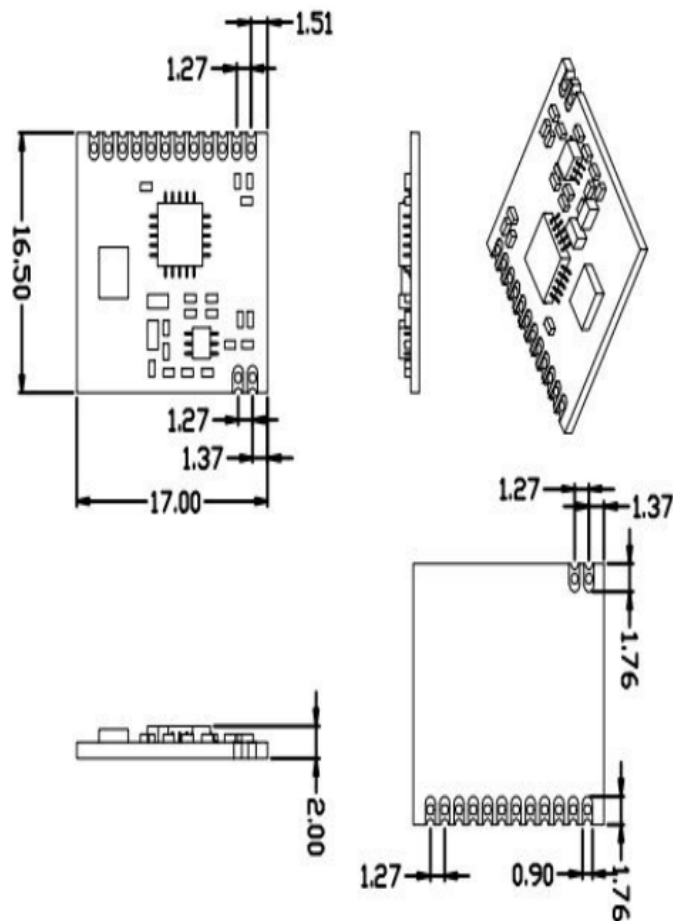
Specification

Applications

- Remote control
- Telemetry
- Home security & alarm
- Home automation
- Remote keyless entry
- Industrial control
- Toy control
- Personal data logging
- Remote meter reading
- Sensor networks
- Tire pressure monitoring
- Health monitors
- Wireless PC peripherals
- Tag readers

Characteristics

Parameter	Min	Typ	Max	Units	Conditions
Operating Condition					
Supply Voltage Range	1.8	3.3	3.6	V	-
Operating Temperature	-20	-	85	V	-
DC Characteristics					
Rx Mode Current	-	18.5	-	mA	-
Tx Mode Current	-	85	-	mA	@20dBm
Sleep Mode Current	-	<1	-	uA	-
RF Parameter					
Frequency range	428	433	438	MHZ	@433MHZ
Modulation rate	0.123	-	256	Kbps	FSK
Output power range	0	-	20	dBm	-
Sensitivity	-	-121	-	dBm	@data=1.2kbps,Fdev=30kHz



Overview



(<http://www.seeedstudio.com/depot/Shenzhen-2U-t-11.html?ref=pinfo>)

(<http://www.seeedstudio.com/depot/Others-m-24.html?ref=pinfo>)

Weight: 2 g

Designer: Others
Other Products From
This Designer