



Chipsmall Limited consists of a professional team with an average of over 10 year of expertise in the distribution of electronic components. Based in Hongkong, we have already established firm and mutual-benefit business relationships with customers from,Europe,America and south Asia,supplying obsolete and hard-to-find components to meet their specific needs.

With the principle of "Quality Parts,Customers Priority,Honest Operation,and Considerate Service",our business mainly focus on the distribution of electronic components. Line cards we deal with include Microchip,ALPS,ROHM,Xilinx,Pulse,ON,Everlight and Freescale. Main products comprise IC,Modules,Potentiometer,IC Socket,Relay,Connector.Our parts cover such applications as commercial,industrial, and automotives areas.

We are looking forward to setting up business relationship with you and hope to provide you with the best service and solution. Let us make a better world for our industry!



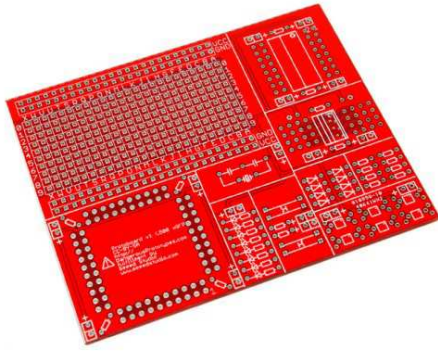
## Contact us

Tel: +86-755-8981 8866 Fax: +86-755-8427 6832

Email & Skype: info@chipsmall.com Web: www.chipsmall.com

Address: A1208, Overseas Decoration Building, #122 Zhenhua RD., Futian, Shenzhen, China





(images/product/QFP surface.jpg)

## QFP surface mount protoboard - 0.50mm

SKU: 319010047



([https://www.kickstarter.com/projects/seeed/wio-link-3-steps-5-minutes-build-your-iot-applicat/description?ref=banner\\_depot](https://www.kickstarter.com/projects/seeed/wio-link-3-steps-5-minutes-build-your-iot-applicat/description?ref=banner_depot))

### Description

A multi-purpose surface mount protoboard from Dangerous Prototypes. Great for getting started ([http://dangerousprototypes.com/docs/Main\\_Page#Processor\\_overviews](http://dangerousprototypes.com/docs/Main_Page#Processor_overviews)) with a new microcontroller. It has footprints for:

- 32-80pin xQFP packages (TQFP, VQFP, LQFP, etc)
- SOIC(W) chips from .150" to .3" (max 32 pins)
- xSSOP chips (max 32 pins)
- Button with pull-up resistor input area (2x)
- LED with resistor output area (8x)
- SMD or through hole crystal with capacitors
- SOT-23-3/5/6 (6x)
- 0805 R and C (8x, plus extras near IC footprints)
- DO-323 (8x)
- 24x10 pin through-hole prototype area
- Power bus routed near all components
- Silk labels on top and bottom
- Open source (CC-BY-SA)

Don't know your size? See choosing a prototype board ([http://dangerousprototypes.com/docs/Choosing\\_a\\_breakout\\_board](http://dangerousprototypes.com/docs/Choosing_a_breakout_board)).

Documentation ([http://dangerousprototypes.com/docs/Dangerous\\_Protoboards#xQFP\\_protoboard](http://dangerousprototypes.com/docs/Dangerous_Protoboards#xQFP_protoboard))

If you encounter any problems when using this product, here is the forum (<http://dangerousprototypes.com/forum/index.php>) from which you can get the technical support.

## Overview



(<http://www.seeedstudio.com/depot/Maker-Pro-t-1672.html?ref=pinfo>)

(<http://dangerousprototypes.com/forum/>)

Other Products From This Designer (<http://www.seeedstudio.com/depot/Dangerous-Prototypes-m-9.html?ref=pinfo>)

Weight: 24 g