



Chipsmall Limited consists of a professional team with an average of over 10 year of expertise in the distribution of electronic components. Based in Hongkong, we have already established firm and mutual-benefit business relationships with customers from,Europe,America and south Asia,supplying obsolete and hard-to-find components to meet their specific needs.

With the principle of “Quality Parts,Customers Priority,Honest Operation,and Considerate Service”,our business mainly focus on the distribution of electronic components. Line cards we deal with include Microchip,ALPS,ROHM,Xilinx,Pulse,ON,Everlight and Freescale. Main products comprise IC,Modules,Potentiometer,IC Socket,Relay,Connector.Our parts cover such applications as commercial,industrial, and automotives areas.

We are looking forward to setting up business relationship with you and hope to provide you with the best service and solution. Let us make a better world for our industry!



Contact us

Tel: +86-755-8981 8866 Fax: +86-755-8427 6832

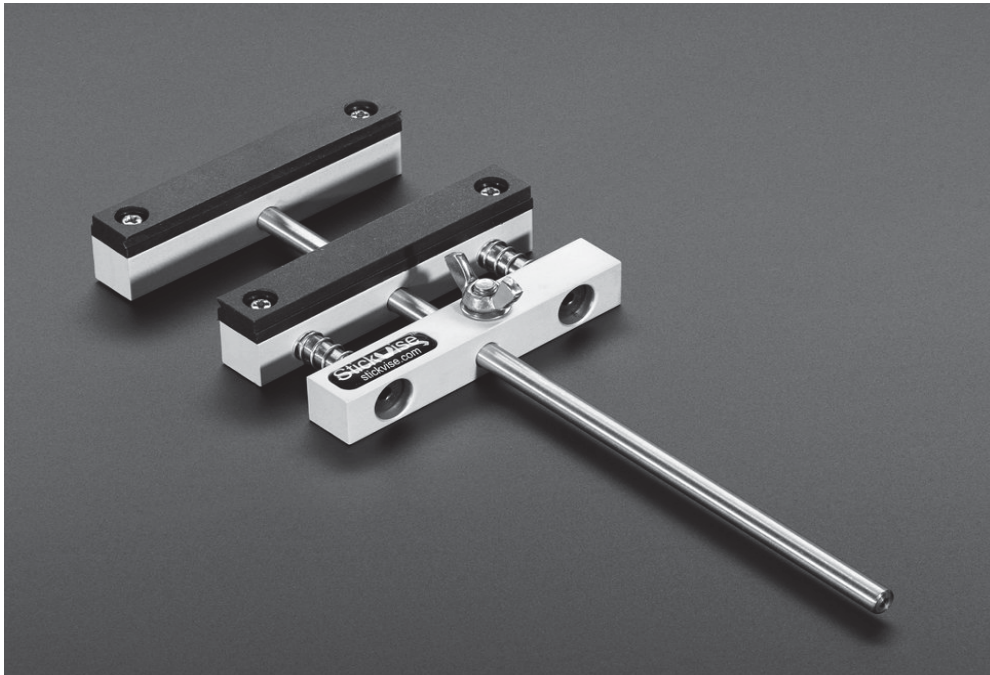
Email & Skype: info@chipsmall.com Web: www.chipsmall.com

Address: A1208, Overseas Decoration Building, #122 Zhenhua RD., Futian, Shenzhen, China



Stickwise PCB Vise

PRODUCT ID: 3197



Description

Are you still looking for that perfect PCB holder? The low profile **PCB Stickwise** might be just the thing you need!

In performing the simple task of holding a PCB near table level, the Stickwise is great because your hands can rest directly on the table, allowing you to steady yourself with minimal effort for fine soldering and probing. The Stickwise also fits easily under a microscope and keeps PCBs consistently in focus.

Set the width slightly smaller than the size of your work-piece, compress the spring, slide your PCB into place, and release the springs. Easy, fast, and repeatable.

While the design is simple, it doesn't limit you and is totally hackable. The nylon jaws that come with the vise hold a PCB 5mm or so from the shaft, giving you clearance for most layouts. If you need something a little taller, there are 3D printable designs on the site for taller jaws, jaws with slots to keep cables out of the way, and even High Temperature PTFE Jaws.

Features

Hold your PCB flat -- give your arms a rest! Stickwise is not up in the air, it holds your circuit board flat so you can solder with stability at table level.

Simple design -- No half baked features or gimmicks, Stickwise just holds a circuit board in a simple, intuitive way.

Hackable -- have a special application? 3D print custom jaw plates or choose from many more tested mods to make Stickwise work for your application.

Comes with one set of standard nylon jaws.

Technical Details

Stickwise is designed with simple, high quality parts. The jaws are machined, bead blasted and anodized aluminum. The jaw plates are made with insulating Nylon 6/6. All all other components are metric standard sizes.

Product Dimensions: 200.0mm x 76.0mm x 25.0mm / 7.9" x 3.0" x 1.0"

Product Weight: 170.0g / 6.0oz

[Holding Capacity](#)

[Outside Dimensions](#)

[Mounting Specifications](#)

Engineered in NYC Adafruit®