



Chipsmall Limited consists of a professional team with an average of over 10 year of expertise in the distribution of electronic components. Based in Hongkong, we have already established firm and mutual-benefit business relationships with customers from,Europe,America and south Asia,supplying obsolete and hard-to-find components to meet their specific needs.

With the principle of “Quality Parts,Customers Priority,Honest Operation,and Considerate Service”,our business mainly focus on the distribution of electronic components. Line cards we deal with include Microchip,ALPS,ROHM,Xilinx,Pulse,ON,Everlight and Freescale. Main products comprise IC,Modules,Potentiometer,IC Socket,Relay,Connector.Our parts cover such applications as commercial,industrial, and automotives areas.

We are looking forward to setting up business relationship with you and hope to provide you with the best service and solution. Let us make a better world for our industry!



Contact us

Tel: +86-755-8981 8866 Fax: +86-755-8427 6832

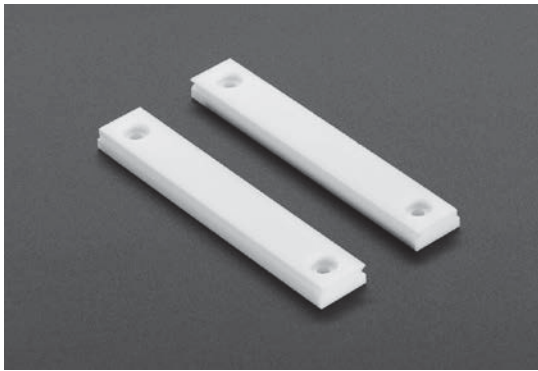
Email & Skype: info@chipsmall.com Web: www.chipsmall.com

Address: A1208, Overseas Decoration Building, #122 Zhenhua RD., Futian, Shenzhen, China



Stickwise High Temperature PTFE Jaws (pair)

PRODUCT ID: 3198



Description

Are you concerned that your smokin' hot soldering skills will set your project alight? There is no more need to fear the heat! These High-Temperature PTFE Jaws are a great hack for your PCB Stickwise, keeping your board safe from incineration.

Made from Teflon, their main advantage is high temperature resistance. You can take a hot soldering iron and touch it directly to the jaw plates without leaving a mark. Neat! Or should we say... *~cool~*

Does **not** include PCB vise.

Technical Details

Product weight (pair): 23.5g

Product weight (single): 11.8g

Product Dimensions: 76.2mm x 12.7mm x 6.2mm / 3.0" x 0.5" x 0.2"