



Chipsmall Limited consists of a professional team with an average of over 10 year of expertise in the distribution of electronic components. Based in Hongkong, we have already established firm and mutual-benefit business relationships with customers from,Europe,America and south Asia,supplying obsolete and hard-to-find components to meet their specific needs.

With the principle of “Quality Parts,Customers Priority,Honest Operation,and Considerate Service”,our business mainly focus on the distribution of electronic components. Line cards we deal with include Microchip,ALPS,ROHM,Xilinx,Pulse,ON,Everlight and Freescale. Main products comprise IC,Modules,Potentiometer,IC Socket,Relay,Connector.Our parts cover such applications as commercial,industrial, and automotives areas.

We are looking forward to setting up business relationship with you and hope to provide you with the best service and solution. Let us make a better world for our industry!



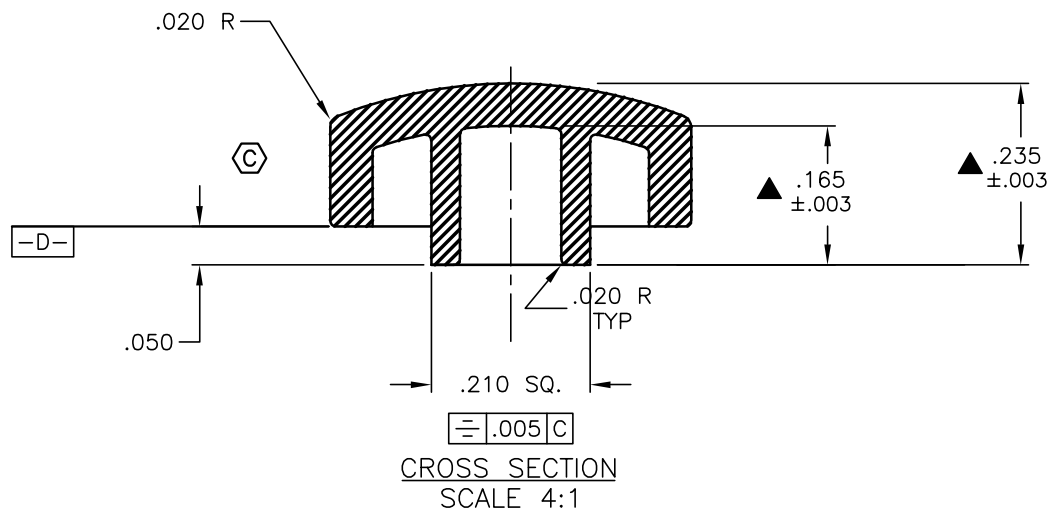
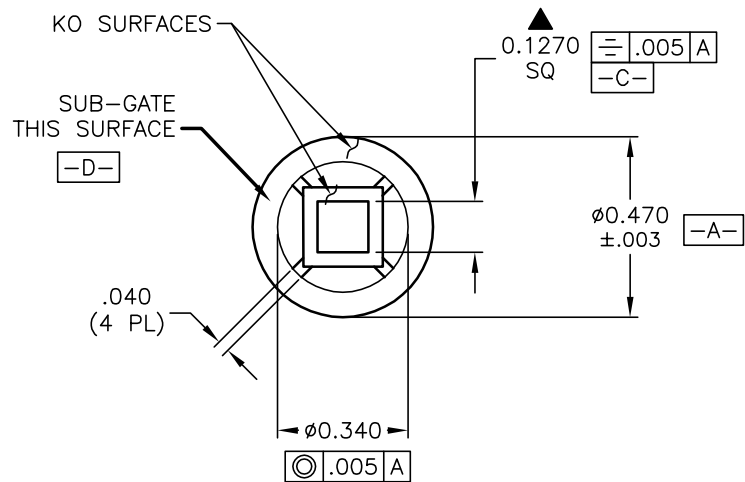
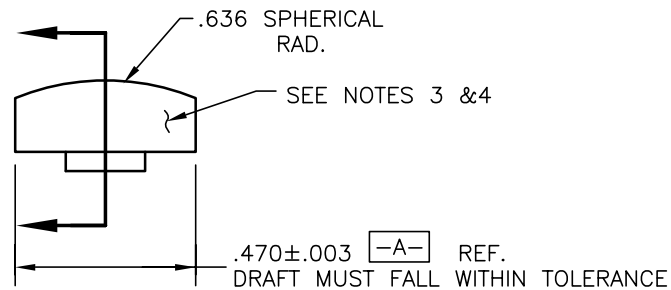
## Contact us

Tel: +86-755-8981 8866 Fax: +86-755-8427 6832

Email & Skype: [info@chipsmall.com](mailto:info@chipsmall.com) Web: [www.chipsmall.com](http://www.chipsmall.com)

Address: A1208, Overseas Decoration Building, #122 Zhenhua RD., Futian, Shenzhen, China





## NOTES:

1. ALL DIMENSIONS IN INCHES
2. MATERIAL: ABS RTP600 SC50425A  
COLOR RED
- ▲ 3. EXTERNAL SURFACES TO BE FREE OF SINK MARKS & BLEMISHES
- ▲ 4. SURFACE FINISH: FINE EDM MACHINE FINISH
5. ▲ DESIGNATE MAJOR FEATURE:
6. UNLESS OTHERWISE SPECIFIED TOLERANCE TO BE ±.005

C	14446	REMOVE DIM	11/1/04	AR
B	12555	DIMENSION CHANGE	11/13/02	CB
A	11567	RELEASED FOR PRODUCTION	2/12/02	CB
REV.	ECN No.	DESCRIPTION	DATE	CHKD
THE INFORMATION CONTAINED IN THIS DOCUMENT IS PROPRIETARY TO E-SWITCH AND IS NOT TO BE COPIED OR TRANSFERRED				

**E-SWITCH®**

TITLE

320.08 CAP RED

SCALE

2:1

DATE

2/12/02

DR

CB

DWG

B099404

REV

C