



Chipsmall Limited consists of a professional team with an average of over 10 year of expertise in the distribution of electronic components. Based in Hongkong, we have already established firm and mutual-benefit business relationships with customers from,Europe,America and south Asia,supplying obsolete and hard-to-find components to meet their specific needs.

With the principle of "Quality Parts,Customers Priority,Honest Operation,and Considerate Service",our business mainly focus on the distribution of electronic components. Line cards we deal with include Microchip,ALPS,ROHM,Xilinx,Pulse,ON,Everlight and Freescale. Main products comprise IC,Modules,Potentiometer,IC Socket,Relay,Connector.Our parts cover such applications as commercial,industrial, and automotives areas.

We are looking forward to setting up business relationship with you and hope to provide you with the best service and solution. Let us make a better world for our industry!



Contact us

Tel: +86-755-8981 8866 Fax: +86-755-8427 6832

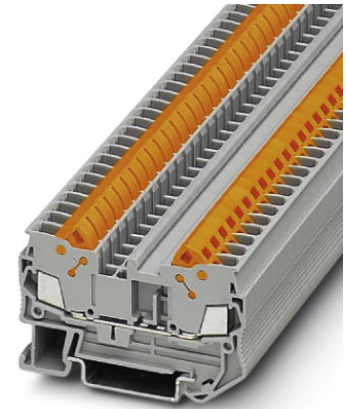
Email & Skype: info@chipsmall.com Web: www.chipsmall.com

Address: A1208, Overseas Decoration Building, #122 Zhenhua RD., Futian, Shenzhen, China



QTC 2,5

Order No.: 3206416



<http://eshop.phoenixcontact.de/phoenix/treeViewClick.do?UID=3206416>

Quick connection feed-through terminal block, Type of connection: Quick connection, Quick connection, Cross section: 0.5 mm² - 2.5 mm², AWG 20 - 14, Width: 6.2 mm, Color: gray, Mounting type: NS 35/7,5, NS 35/15



| Commercial data | |
|--------------------------|--------------------|
| EAN | 4017918976033 |
| Pack | 50 pcs. |
| Customs tariff | 85369010 |
| Weight/Piece | 0.01065 KG |
| Catalog page information | Page 218 (CL-2009) |

Product notes

WEEE/RoHS-compliant since:
01/01/2003



<http://www.download.phoenixcontact.com>
Please note that the data given here has been taken from the online catalog. For comprehensive information and data, please refer to the user documentation. The General Terms and Conditions of Use apply to Internet downloads.

Technical data

General

| | |
|-----------------------|------|
| Number of levels | 1 |
| Number of connections | 2 |
| Color | gray |

| | |
|------------------------------------|----|
| Insulating material | PA |
| Inflammability class acc. to UL 94 | V0 |

Dimensions

| | |
|------------------|---------|
| Width | 6.2 mm |
| Length | 62.6 mm |
| Height NS 35/7,5 | 39.3 mm |
| Height NS 35/15 | 46.8 mm |

Technical data

| | |
|----------------------------------|---|
| Maximum load current | 24 A (with 2.5 mm ² conductor cross section) |
| Rated surge voltage | 8 kV |
| Pollution degree | 3 |
| Surge voltage category | III |
| Insulating material group | I |
| Connection in acc. with standard | IEC 60947-7-1 |
| Nominal current I _N | 24 A |
| Nominal voltage U _N | 800 V |
| Open side panel | ja |

Connection data

| | |
|---|---------------------|
| Conductor cross section solid min. | 0.5 mm ² |
| Conductor cross section solid max. | 2.5 mm ² |
| Conductor cross section stranded min. | 0.5 mm ² |
| Conductor cross section stranded max. | 2.5 mm ² |
| Conductor cross section AWG/kcmil min. | 20 |
| Conductor cross section AWG/kcmil max | 14 |
| Type of connection | Quick connection |
| Material wire insulation | PVC / PE |
| Structure of individual litz in acc. with VDE 0295 / smallest wire diameter | VDE 0295 Cl.1-5 |

Certificates / Approvals

Certification

ABS, BV, CSA, CUL, GL, NK, UL

Certification Ex: IECEX, KEMA-EX

CSA

| | |
|-----------------------|-------|
| Nominal voltage U_N | 600 V |
| Nominal current I_N | 15 A |
| AWG/kcmil | 20-14 |

CUL

| | |
|-----------------------|-------|
| Nominal voltage U_N | 600 V |
| Nominal current I_N | 15 A |
| AWG/kcmil | 20-14 |

UL

| | |
|-----------------------|-------|
| Nominal voltage U_N | 600 V |
| Nominal current I_N | 15 A |
| AWG/kcmil | 20-14 |

Accessories

| Item | Designation | Description |
|-----------------|-----------------------------|--|
| Assembly | | |
| 3206209 | ATP-QTC | Partition plate, Length: 64.4 mm, Width: 2 mm, Height: 46 mm, Color: gray |
| 3022218 | CLIPFIX 35 | Snap-on end bracket, for 35 mm NS 35/7.5 or NS 35/15 DIN rail, can be fitted with Zack strip ZB 8 and ZB 8/27, terminal strip marker KLM 2 and KLM, width: 9.5 mm, color: gray |
| 3022276 | CLIPFIX 35-5 | Snap-on end bracket, for NS 35/7.5 or NS 35/15 DIN rail, can be fitted with Zack strip ZB 5 and ZBF 5, terminal strip marker KLM 2 and KLM, parking facility for FBS...5, FBS...6, KSS 5, KSS 6, width: 5,15 mm, color: gray |
| 3206568 | D-QTC 2,5 | End cover, Length: 62.6 mm, Width: 2.2 mm, Height: 39.3 mm, Color: gray |
| 0801762 | NS 35/ 7,5 CU UNPERF 2000MM | DIN rail, material: Copper, unperforated, height 7.5 mm, width 35 mm, length: 2 m |
| 0801733 | NS 35/ 7,5 PERF 2000MM | DIN rail, material: Steel, galvanized and passivated with a thick layer, perforated, height 7.5 mm, width 35 mm, length: 2 m |
| 0801681 | NS 35/ 7,5 UNPERF 2000MM | DIN rail, material: Steel, unperforated, height 7.5 mm, width 35 mm, length: 2 m |
| 1201756 | NS 35/15 AL UNPERF 2000MM | DIN rail, deep-drawn, high profile, unperforated, 1.5 mm thick, material: Aluminum, height 15 mm, width 35 mm, length 2 m |
| 1201895 | NS 35/15 CU UNPERF 2000MM | DIN rail, material: Copper, unperforated, 1.5 mm thick, height 15 mm, width 35 mm, length: 2 m |

| | | |
|---------|----------------------------|---|
| 1201714 | NS 35/15 UNPERF 2000MM | DIN rail, material: Steel, unperforated, height 15 mm, width 35 mm, length: 2 m |
| 1201798 | NS 35/15-2,3 UNPERF 2000MM | DIN rail, material: Steel, unperforated, 2.3 mm thick, height 15 mm, width 35 mm, length: 2 m |
| 3038943 | RB ST (2,5/4)-1,5 | Cross connector/bridge, Number of positions: 2, Color: red |

Bridges

| | | |
|---------|----------|---|
| 3030336 | FBS 2-6 | Cross connector/bridge, Number of positions: 2, Color: red |
| 3030242 | FBS 3-6 | Cross connector/bridge, Number of positions: 3, Color: red |
| 3030255 | FBS 4-6 | Cross connector/bridge, Number of positions: 4, Color: red |
| 3030349 | FBS 5-6 | Cross connector/bridge, Number of positions: 5, Color: red |
| 3030271 | FBS 10-6 | Cross connector/bridge, Number of positions: 10, Color: red |
| 3030365 | FBS 20-6 | Cross connector/bridge, Number of positions: 20, Color: red |
| 3032224 | FBS 50-6 | Cross connector/bridge, Number of positions: 50, Color: red |

Plug/Adapter

| | | |
|---------|-------|---------------------------|
| 3030925 | PAI-4 | Test adapter, Color: gray |
| 3030996 | PS-6 | Test adapter, Color: red |

Tools

| | | |
|---------|---------------|---|
| 1204517 | SZF 1-0,6X3,5 | Screwdriver, blade: 0.6 x 3.5 x 100 mm, length 180 mm |
|---------|---------------|---|

Diagrams/Drawings

Circuit diagram



Approbationslogos (EX-Bereich)



Address

PHOENIX CONTACT Inc., USA
586 Fulling Mill Road
Middletown, PA 17057, USA
Phone (800) 888-7388
Fax (717) 944-1625
<http://www.phoenixcon.com>



© 2010 Phoenix Contact
Technical modifications reserved;