



Chipsmall Limited consists of a professional team with an average of over 10 year of expertise in the distribution of electronic components. Based in Hongkong, we have already established firm and mutual-benefit business relationships with customers from,Europe,America and south Asia,supplying obsolete and hard-to-find components to meet their specific needs.

With the principle of “Quality Parts,Customers Priority,Honest Operation,and Considerate Service”,our business mainly focus on the distribution of electronic components. Line cards we deal with include Microchip,ALPS,ROHM,Xilinx,Pulse,ON,Everlight and Freescale. Main products comprise IC,Modules,Potentiometer,IC Socket,Relay,Connector.Our parts cover such applications as commercial,industrial, and automotives areas.

We are looking forward to setting up business relationship with you and hope to provide you with the best service and solution. Let us make a better world for our industry!



Contact us

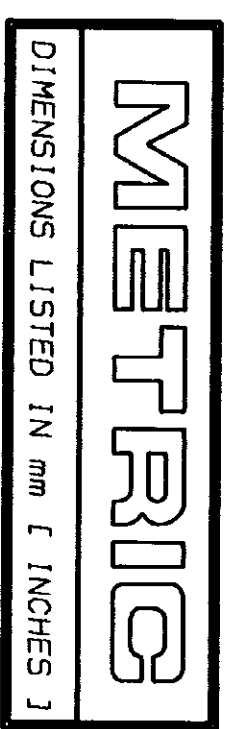
Tel: +86-755-8981 8866 Fax: +86-755-8427 6832

Email & Skype: info@chipsmall.com Web: www.chipsmall.com

Address: A1208, Overseas Decoration Building, #122 Zhenhua RD., Futian, Shenzhen, China

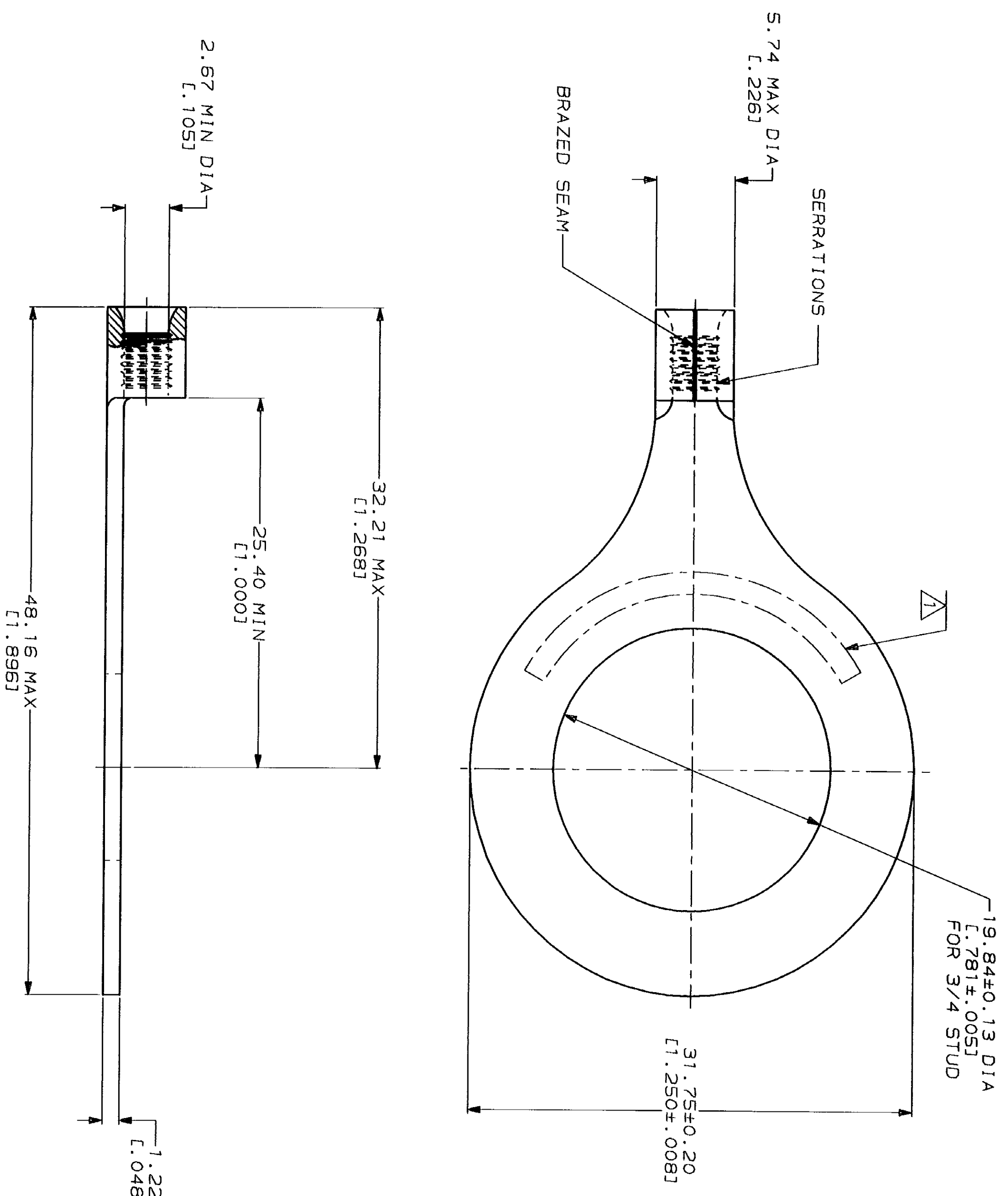


LOC		DIST		REV		DATE		APPRO	
G	14	P	F	ZONE	LTR	DESCRIPTION	DATE	APPRO	18 DAY
				C		REV & REDRAWN PER 0720-0040-93	3-17-93		



AMP WIRE RANGE		UL E13288 Listed	
16-14HD AWG	SOLID OR STRANDED	16-14HD AWG	STRANDED
LR7189 Certified		MILITARY P/N AND CLASS	
16-14HD AWG	SOLID OR STRANDED	NOT APPLICABLE	

△ STAMP AMP 16-14HD* APPROX AS SHOWN



AMP INCORPORATED
CUSTOMER SERVICE SYSTEMS

FOR ADDITIONAL PRODUCT INFORMATION OR COPIES OF DRAWINGS AND TECHNICAL DOCUMENTS	PRODUCT INFORMATION CENTER 1-800-522-6752
FOR APPLICATION TOOLING INFORMATION	TOOLING ASSISTANCE CENTER 1-800-722-1111
FOR ORDER ENTRY	1-800-526-5142

MAX RECOMMENDED OPERATING TEMPERATURE:	170°C MAX
VOLTAGE RATING:	NOT APPLICABLE
WIRE CROSS SECTIONAL AREA RANGE:	1.04-2.62mm² (2,050-5,180) CIR MILS SOLID OR STRANDED

DO NOT SCALE PRINT. UNLESS SPECIFIED DIMENSIONS IN mm [INCHES] TOLERANCES ON:	DR 3-17-93 TA BRINKMAN
2 PLG DEC ±	CHK 3-17-93 DA PATTERSON
3 PLG DEC ±	APPD 3-17-93 DE MILLER
ANGLES	APPD 3-17-93 JL MECKLEY
MATERIAL	PRODUCT SPEC
COPPER PER ASTM B-152 ANNEALED	
FINISH	APPLICATION SPEC
TIN PLATE 0.00254L (0.00100) MIN THK PER MIL-T-10727	
WEIGHT	



AMP Incorporated
Harrisburg, PA 17105-3608

TERMINAL, RING TONGUE,
HEAVY DUTY, SOLISTRAND™

SIZE	CAGE CODE	DRAWING NO
00779	00779	320759
SCALE	4:1	SHEET
		1 OF 1