



Chipsmall Limited consists of a professional team with an average of over 10 year of expertise in the distribution of electronic components. Based in Hongkong, we have already established firm and mutual-benefit business relationships with customers from,Europe,America and south Asia,supplying obsolete and hard-to-find components to meet their specific needs.

With the principle of “Quality Parts,Customers Priority,Honest Operation,and Considerate Service”,our business mainly focus on the distribution of electronic components. Line cards we deal with include Microchip,ALPS,ROHM,Xilinx,Pulse,ON,Everlight and Freescale. Main products comprise IC,Modules,Potentiometer,IC Socket,Relay,Connector.Our parts cover such applications as commercial,industrial, and automotives areas.

We are looking forward to setting up business relationship with you and hope to provide you with the best service and solution. Let us make a better world for our industry!



Contact us

Tel: +86-755-8981 8866 Fax: +86-755-8427 6832

Email & Skype: info@chipsmall.com Web: www.chipsmall.com

Address: A1208, Overseas Decoration Building, #122 Zhenhua RD., Futian, Shenzhen, China

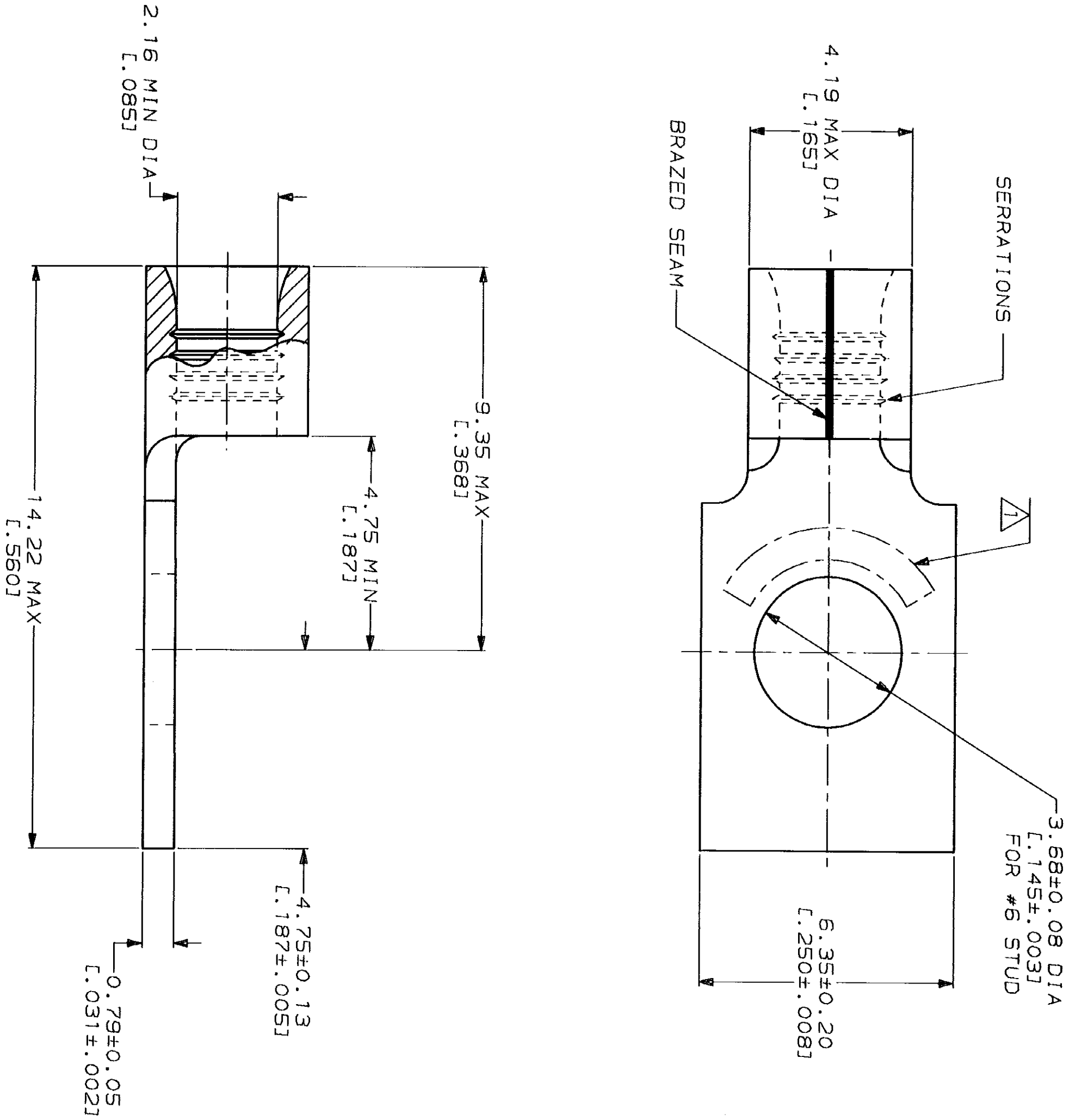


LOC		DIST		ZONE		LTR		REV		DATE		APPRO	
G	1	4		P	F			C	REV 8 REDRAWN PER 0720-0040-93	3-26-93	1	W	DAP

METRIC
DIMENSIONS LISTED IN mm [INCHES]

AMP WIRE RANGE		UL E13288 Listed	
16-14 AWG SOLID OR STRANDED		16-14 AWG SOLID OR STRANDED	
UL LR7189 Certified 16-14 AWG SOLID OR STRANDED		MILITARY P/N AND CLASS NOT APPLICABLE	

1 STAMP AMP 16-14* APPROX AS SHOWN



AMP INCORPORATED
CUSTOMER SERVICE SYSTEMS

FOR ADDITIONAL PRODUCT INFORMATION OR COPIES OF DRAWINGS AND TECHNICAL DOCUMENTS	PRODUCT INFORMATION CENTER 1-800-522-6752	MAX RECOMMENDED OPERATING TEMPERATURE: 170°C MAX
FOR APPLICATION TOOLING INFORMATION	TOOLING ASSISTANCE CENTER 1-800-722-1111	VOLTAGE RATING: NOT APPLICABLE
FOR ORDER ENTRY	1-800-526-5142	WIRE CROSS SECTIONAL AREA RANGE: 1.04-2.62mm² [2,050-5,180] CIR MILS SOLID OR STRANDED

DO NOT SCALE PRINT.
UNLESS SPECIFIED
DIMENSIONS IN mm FINISHES
TOLERANCES ON:
2 PLC DEC ±
3 PLC DEC ±
ANGLES
MATERIAL
COPPER PER
ASTM B-152
ANNEALED
FINISH
TIN PLATE
0.00254 [.000100] MIN
THK PER MIL-T-10727

DR 3-26-93 TA BRINKMAN	CHK 3-26-93 DA PATTERSON	APPD 3-26-93 DE MILLER	APPD 3-26-93 JL MECKLEY	PRODUCT SPEC	APPLICATION SPEC	WEIGHT
---------------------------	-----------------------------	---------------------------	----------------------------	--------------	------------------	--------

AMP
AMP Incorporated
Harrisburg, PA 17105-3608
NAME
TERMINAL, RECTANGULAR
TONGUE, SOLISTRAND™

SIZE	CAGE CODE	DRAWING NO
SCALE 10:1	00779	320815

320815
PART NO

320815