



Chipsmall Limited consists of a professional team with an average of over 10 year of expertise in the distribution of electronic components. Based in Hongkong, we have already established firm and mutual-benefit business relationships with customers from,Europe,America and south Asia,supplying obsolete and hard-to-find components to meet their specific needs.

With the principle of “Quality Parts,Customers Priority,Honest Operation,and Considerate Service”,our business mainly focus on the distribution of electronic components. Line cards we deal with include Microchip,ALPS,ROHM,Xilinx,Pulse,ON,Everlight and Freescale. Main products comprise IC,Modules,Potentiometer,IC Socket,Relay,Connector.Our parts cover such applications as commercial,industrial, and automotives areas.

We are looking forward to setting up business relationship with you and hope to provide you with the best service and solution. Let us make a better world for our industry!



Contact us

Tel: +86-755-8981 8866 Fax: +86-755-8427 6832

Email & Skype: info@chipsmall.com Web: www.chipsmall.com

Address: A1208, Overseas Decoration Building, #122 Zhenhua RD., Futian, Shenzhen, China



DRAWING MADE IN THIRD ANGLE PROJECTION

THIS DRAWING IS UNPUBLISHED.

RELEASED FOR PUBLICATION

, 19

© COPYRIGHT 19

BY AMP INCORPORATED. ALL INTERNATIONAL RIGHTS RESERVED.

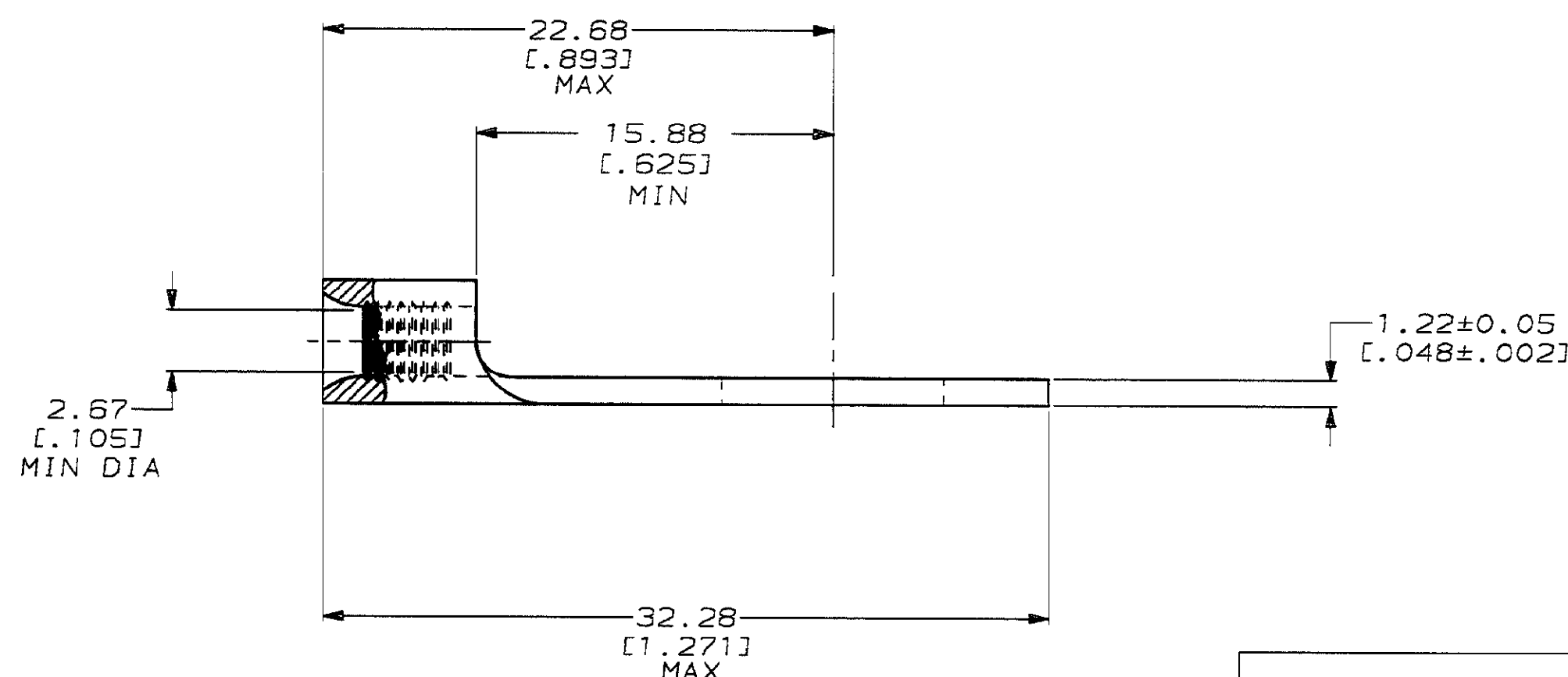
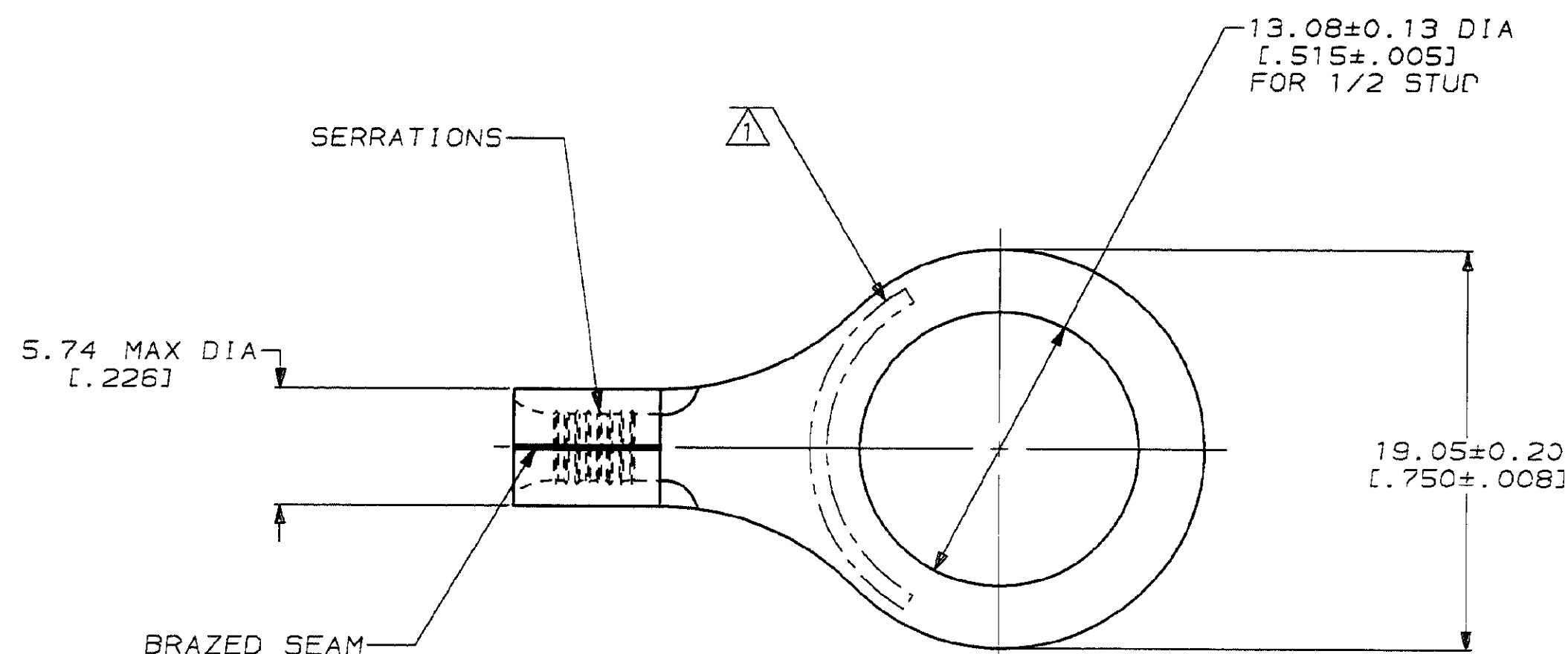
LOC		DIST		P		F		REVISIONS			
G		14						ZONE	LTR	DESCRIPTION	DATE
								C		REV, RDRW, & SM PKG PER 0720-0040-93	3-17-93
											1 st DAP

METRIC

DIMENSIONS LISTED IN mm [INCHES]

AMP WIRE RANGE	UL E13288 Listed
16-14HD AWG SOLID OR STRANDED	16-14HD AWG STRANDED
LR7189 Certified	MILITARY P/N AND CLASS
16-14HD AWG SOLID OR STRANDED	NOT APPLICABLE

1 STAMP AMP 16-14HD* APPROX AS SHOWN

**AMP INCORPORATED
CUSTOMER SERVICE SYSTEMS**FOR ADDITIONAL
PRODUCT INFORMATION OR
COPIES OF DRAWINGS
AND TECHNICAL DOCUMENTSPRODUCT INFORMATION CENTER
1-800-522-6752FOR APPLICATION
TOOLING INFORMATIONTOOLING ASSISTANCE CENTER
1-800-722-1111

FOR ORDER ENTRY

1-800-526-5142

MAX RECOMMENDED OPERATING
TEMPERATURE:
170°C MAXVOLTAGE RATING:
NOT APPLICABLEWIRE CROSS SECTIONAL AREA RANGE:
1.04-2.62mm² [2,050-5,180] CIR MILS
SOLID OR STRANDEDTHIS DRAWING IS A CONTROLLED DOCUMENT FOR
AMP INCORPORATED. IT IS SUBJECT TO CHANGE
AND THE CONTROLLING ENGINEERING ORGANIZATION
SHOULD BE CONTACTED FOR THE LATEST REVISION.DO NOT SCALE PRINT.
UNLESS SPECIFIED
DIMENSIONS IN mm [INCHES]
TOLERANCES ON:
2 PLC DEC ± -
3 PLC DEC ± -
ANGLES ± -MATERIAL
COPPER PER
ASTM B-152
ANNEALEDFINISH
TIN PLATE
0.00254[.000100] MIN
THK PER MIL-T-10727DR 3-17-93
TA BRINKMAN
CHK 3-17-93
DA PATTERSONAPPD 3-17-93
DE MILLER
APPD 3-17-93
JL HECKLEY

PRODUCT SPEC

APPLICATION SPEC

WEIGHT -

AMPAMP Incorporated
Harrisburg, PA 17105-3608

NAME

TERMINAL, RING TONGUE,
HEAVY DUTY, SOLISTRAND™

SIZE

C

CAGE CODE

00779

DRAWING NO

C-321165

SCALE 4:1

SHEET

1 OF 1

AMP 1471-5 REV 3-92

10 SEP 1993 09:40:06 AMP26463 <US128A>DEPT1123>DWG1123>U_SOLISTRAND>U_INLINE

CUSTOMER DRAWING