



Chipsmall Limited consists of a professional team with an average of over 10 year of expertise in the distribution of electronic components. Based in Hongkong, we have already established firm and mutual-benefit business relationships with customers from,Europe,America and south Asia,supplying obsolete and hard-to-find components to meet their specific needs.

With the principle of “Quality Parts,Customers Priority,Honest Operation,and Considerate Service”,our business mainly focus on the distribution of electronic components. Line cards we deal with include Microchip,ALPS,ROHM,Xilinx,Pulse,ON,Everlight and Freescale. Main products comprise IC,Modules,Potentiometer,IC Socket,Relay,Connector.Our parts cover such applications as commercial,industrial, and automotives areas.

We are looking forward to setting up business relationship with you and hope to provide you with the best service and solution. Let us make a better world for our industry!



Contact us

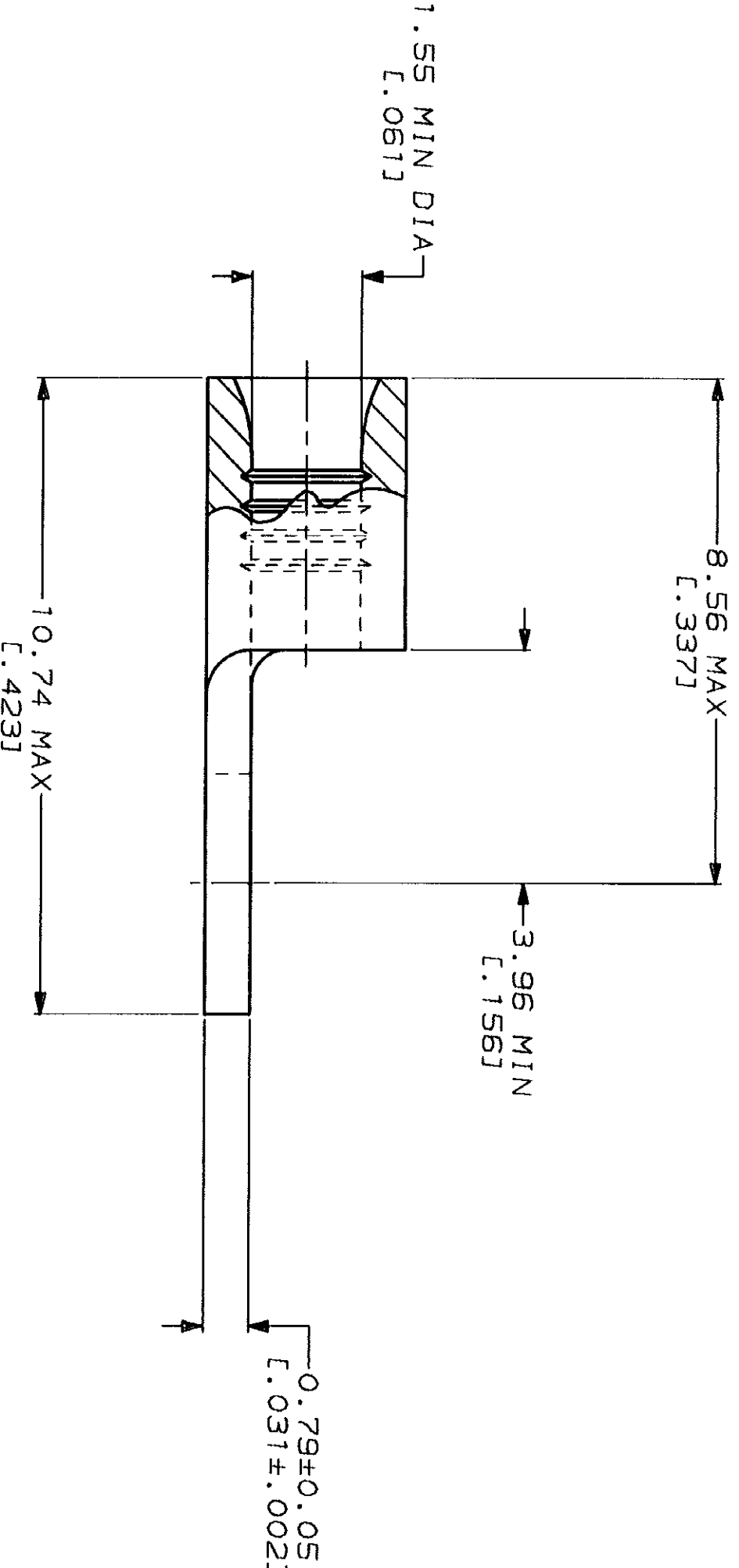
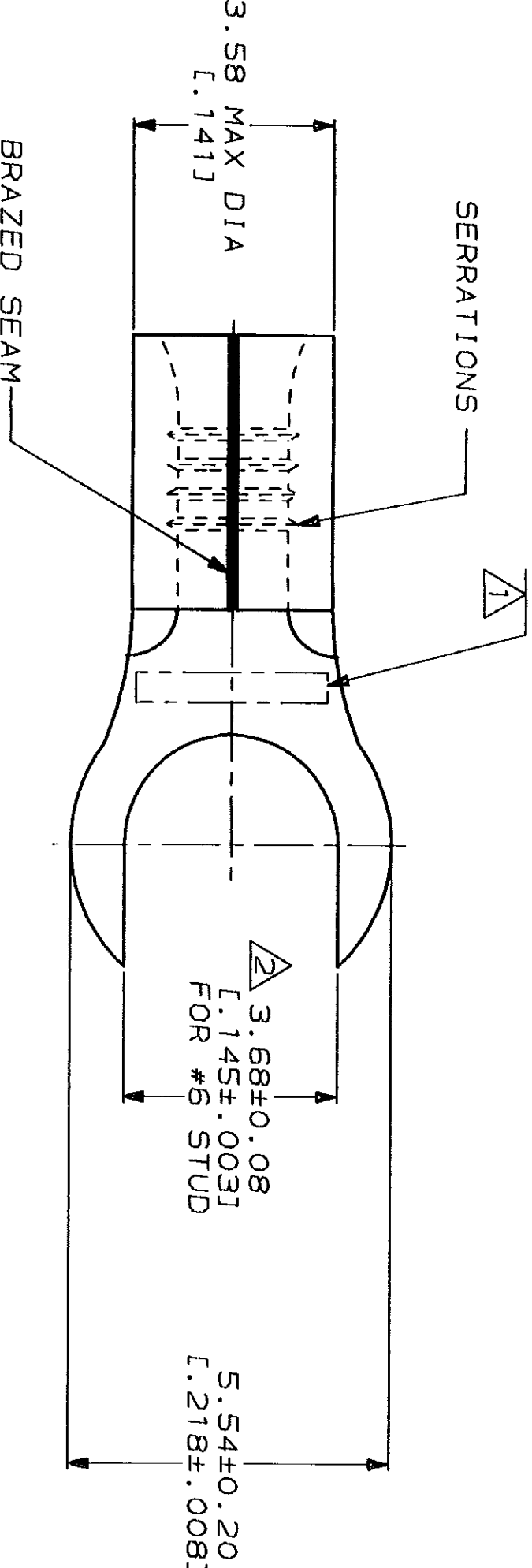
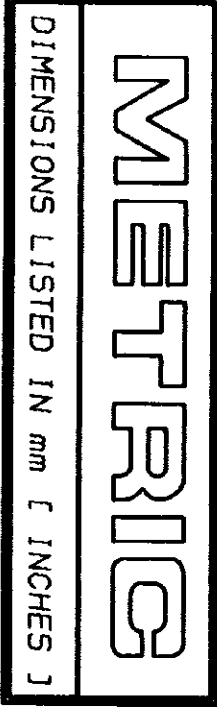
Tel: +86-755-8981 8866 Fax: +86-755-8427 6832

Email & Skype: info@chipsmall.com Web: www.chipsmall.com

Address: A1208, Overseas Decoration Building, #122 Zhenhua RD., Futian, Shenzhen, China



LOC	DIST	REV	ZONE	LTR	DESCRIPTION	DATE	APPD
G	14	P		H	REV 8 REDRAWN PER 0720-0040-93	4-8-93	18 DAP



AMP WIRE RANGE		E13288 Listed	
22-16 AWG SOLID OR STRANDED		22-16 AWG SOLID OR STRANDED	
LR7189 Certified		MILITARY P/N AND CLASS	
22-16 AWG SOLID OR STRANDED		NOT APPLICABLE	

1 STAMP AMP 22-18* APPROX AS SHOWN
22-16 TERMINALS ARE STAMPED 22-18 IN
ACCORDANCE WITH MILITARY SPECIFICATION
MIL-T-7928, COMMERCIAL WIRE RANGE IS 22-16
MINIMUM DIMENSION ACROSS TIPS OF SLOT TO BE
.130 FOR PART NUMBER 2-321289-1

AMP INCORPORATED
CUSTOMER SERVICE SYSTEMS

FOR ADDITIONAL PRODUCT INFORMATION OR COPIES OF DRAWINGS AND TECHNICAL DOCUMENTS	PRODUCT INFORMATION CENTER 1-800-526-6752	VOLTAGE RATING: NOT APPLICABLE	DO NOT SCALE PRINT. UNLESS SPECIFIED DIMENSIONS IN -mm- [INCHES] TOLERANCES ON : 2 PLC DEC ± - 3 PLC DEC ± - ANGLES
FOR APPLICATION TOOLING INFORMATION	TOOLING ASSISTANCE CENTER 1-800-722-1111	WIRE CROSS SECTIONAL AREA RANGE: 0.26-1.65mm² [509-3,260] CIR MILS SOLID OR STRANDED	DR 4-8-93 TA BRINKMAN DA PATTERSON
FOR ORDER ENTRY	1-800-526-5142	THIS DRAWING IS A CONTROLLED DOCUMENT FOR AMP INCORPORATED. IT IS SUBJECT TO CHANGE WITHOUT NOTICE. THE LATEST REVISION SHOULD BE CONSULTED FOR THE LATEST REVISION.	APPD 4-8-93 DE MILLER APPD 4-8-93 JL MECKLEY PRODUCT SPEC APPLICATION SPEC FINISH TIN PLATE 0.00254L [.000100] MIN THK PER MIL-T-10727

TERMINAL, SLOTTED
RING TONGUE, SOLISTRAND™

5000	ON TAPE	2-321289-1
---	LOOSE PIECE	321289
QUANTITY	PACKAGING TYPE	PART NO
AMP AMP Incorporated Harrisburg, PA 17105-3608		
NAME		
SIZE	CAGE CODE	DRAWING NO
C	00779	C-321289
SCALE	10:1	SHEET 1 OF 1

CUSTOMER DRAWING