



Chipsmall Limited consists of a professional team with an average of over 10 year of expertise in the distribution of electronic components. Based in Hongkong, we have already established firm and mutual-benefit business relationships with customers from,Europe,America and south Asia,supplying obsolete and hard-to-find components to meet their specific needs.

With the principle of "Quality Parts,Customers Priority,Honest Operation,and Considerate Service",our business mainly focus on the distribution of electronic components. Line cards we deal with include Microchip,ALPS,ROHM,Xilinx,Pulse,ON,Everlight and Freescale. Main products comprise IC,Modules,Potentiometer,IC Socket,Relay,Connector.Our parts cover such applications as commercial,industrial, and automotives areas.

We are looking forward to setting up business relationship with you and hope to provide you with the best service and solution. Let us make a better world for our industry!



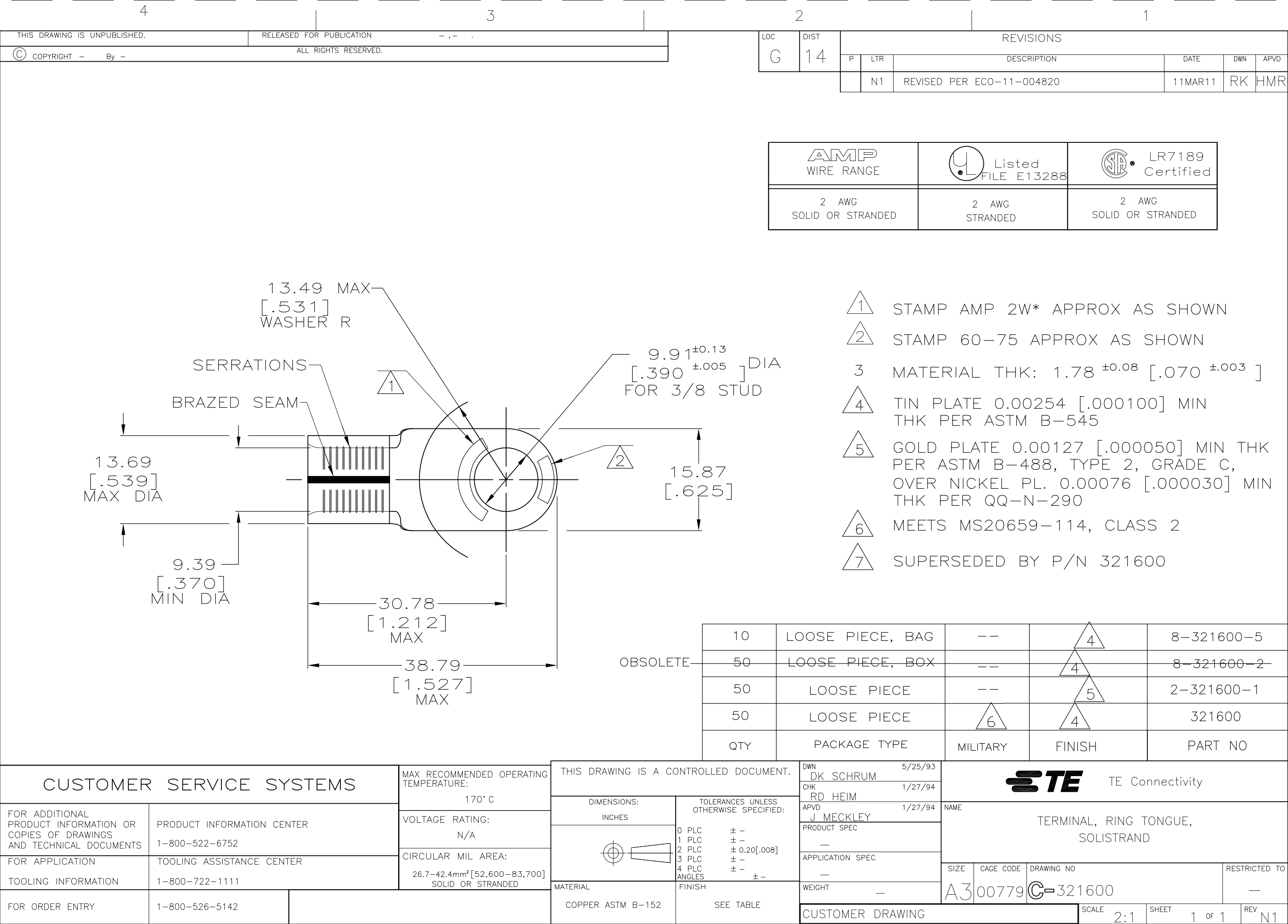
## Contact us

Tel: +86-755-8981 8866 Fax: +86-755-8427 6832

Email & Skype: [info@chipsmall.com](mailto:info@chipsmall.com) Web: [www.chipsmall.com](http://www.chipsmall.com)

Address: A1208, Overseas Decoration Building, #122 Zhenhua RD., Futian, Shenzhen, China





13.49 MAX

[.531]

WASHER R

SERRATIONS

BRAZED SEAM

13.69

[.539]

MAX DIA

9.39

[.370]

MIN DIA

30.78

[1.212]

MAX

38.79

[1.527]

MAX

9.91<sup>±0.13</sup>

[.390<sup>±0.005</sup>]

DIA

FOR 3/8 STUD

15.87

[.625]

1

2

10

50

50

50

QTY

LOOSE PIECE, BAG

LOOSE PIECE, BOX

LOOSE PIECE

LOOSE PIECE

PACKAGE TYPE

--

--

--

6

MILITARY

4

4

5

4

FINISH

8-321600-5

8-321600-2

2-321600-1

321600

PART NO

CUSTOMER SERVICE SYSTEMS

FOR ADDITIONAL PRODUCT INFORMATION OR COPIES OF DRAWINGS AND TECHNICAL DOCUMENTS

FOR APPLICATION TOOLING INFORMATION

FOR ORDER ENTRY

PRODUCT INFORMATION CENTER

1-800-522-6752

TOOLING ASSISTANCE CENTER

1-800-722-1111

1-800-526-5142

MAX RECOMMENDED OPERATING TEMPERATURE:

170° C

VOLTAGE RATING:

N/A

CIRCULAR MIL AREA:

26.7-42.4mm² [52,600-83,700]

SOLID OR STRANDED

THIS DRAWING IS A CONTROLLED DOCUMENT.

DIMENSIONS: INCHES

0 PLC

1 PLC

2 PLC

3 PLC

4 PLC

ANGLES

± -

± -

± 0.20[.008]

± -

± -

± -

FINISH

SEE TABLE

MATERIAL

COPPER ASTM B-152

DWN

DK SCHRUM

5/25/93

CHK

RD HEIM

1/27/94

APVD

J MECKLEY

1/27/94

PRODUCT SPEC

—

APPLICATION SPEC

—

WEIGHT

—

CUSTOMER DRAWING

STE

TE Connectivity

NAME

TERMINAL, RING TONGUE, SOLISTRAND

SIZE

CAGE CODE

DRAWING NO

RESTRICTED TO

A3

00779

C-321600

—

SCALE

2:1

SHEET

1 OF 1

REV

N1