



Chipsmall Limited consists of a professional team with an average of over 10 year of expertise in the distribution of electronic components. Based in Hongkong, we have already established firm and mutual-benefit business relationships with customers from,Europe,America and south Asia,supplying obsolete and hard-to-find components to meet their specific needs.

With the principle of “Quality Parts,Customers Priority,Honest Operation,and Considerate Service”,our business mainly focus on the distribution of electronic components. Line cards we deal with include Microchip,ALPS,ROHM,Xilinx,Pulse,ON,Everlight and Freescale. Main products comprise IC,Modules,Potentiometer,IC Socket,Relay,Connector.Our parts cover such applications as commercial,industrial, and automotives areas.

We are looking forward to setting up business relationship with you and hope to provide you with the best service and solution. Let us make a better world for our industry!



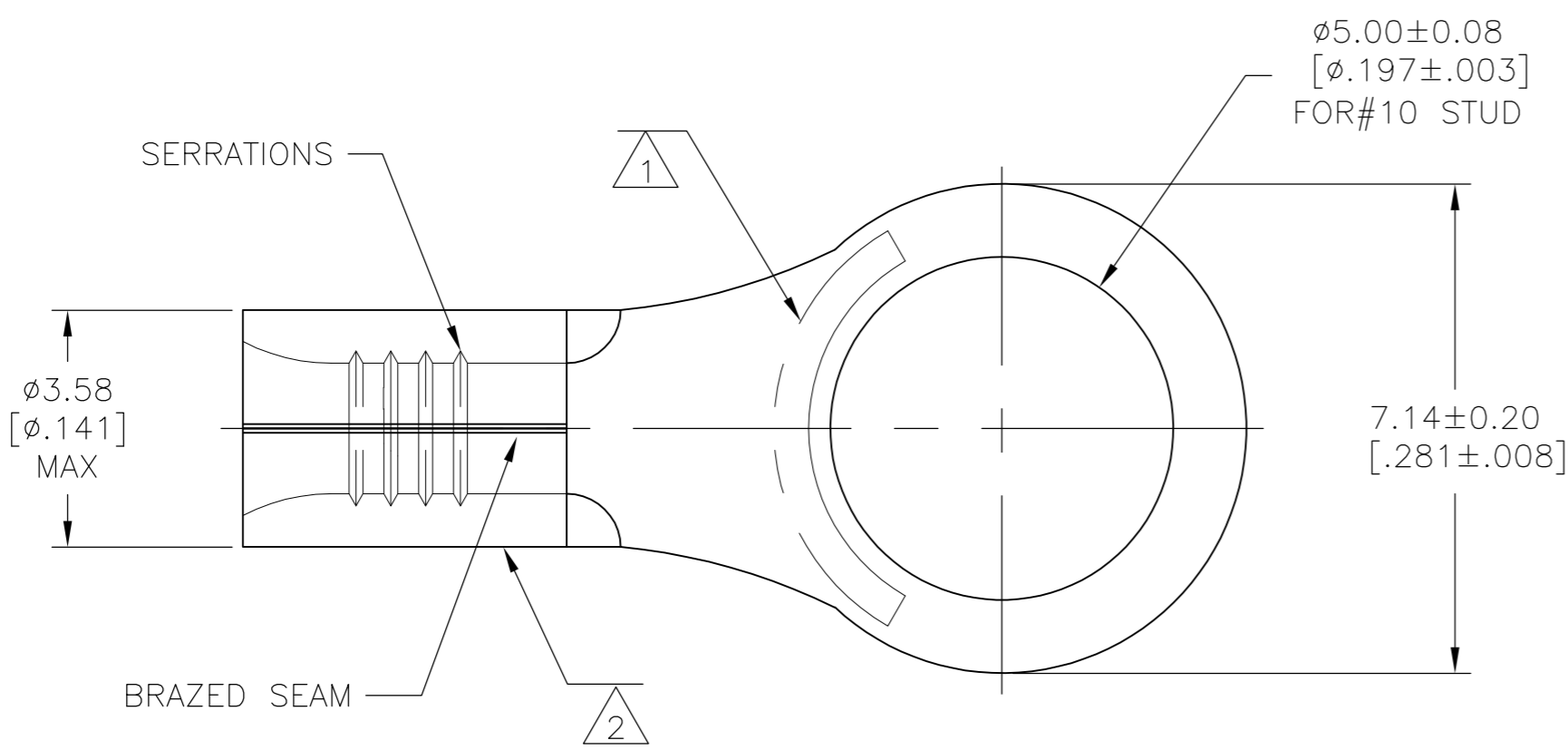
Contact us

Tel: +86-755-8981 8866 Fax: +86-755-8427 6832

Email & Skype: info@chipsmall.com Web: www.chipsmall.com

Address: A1208, Overseas Decoration Building, #122 Zhenhua RD., Futian, Shenzhen, China





AMP
WIRE RANGE

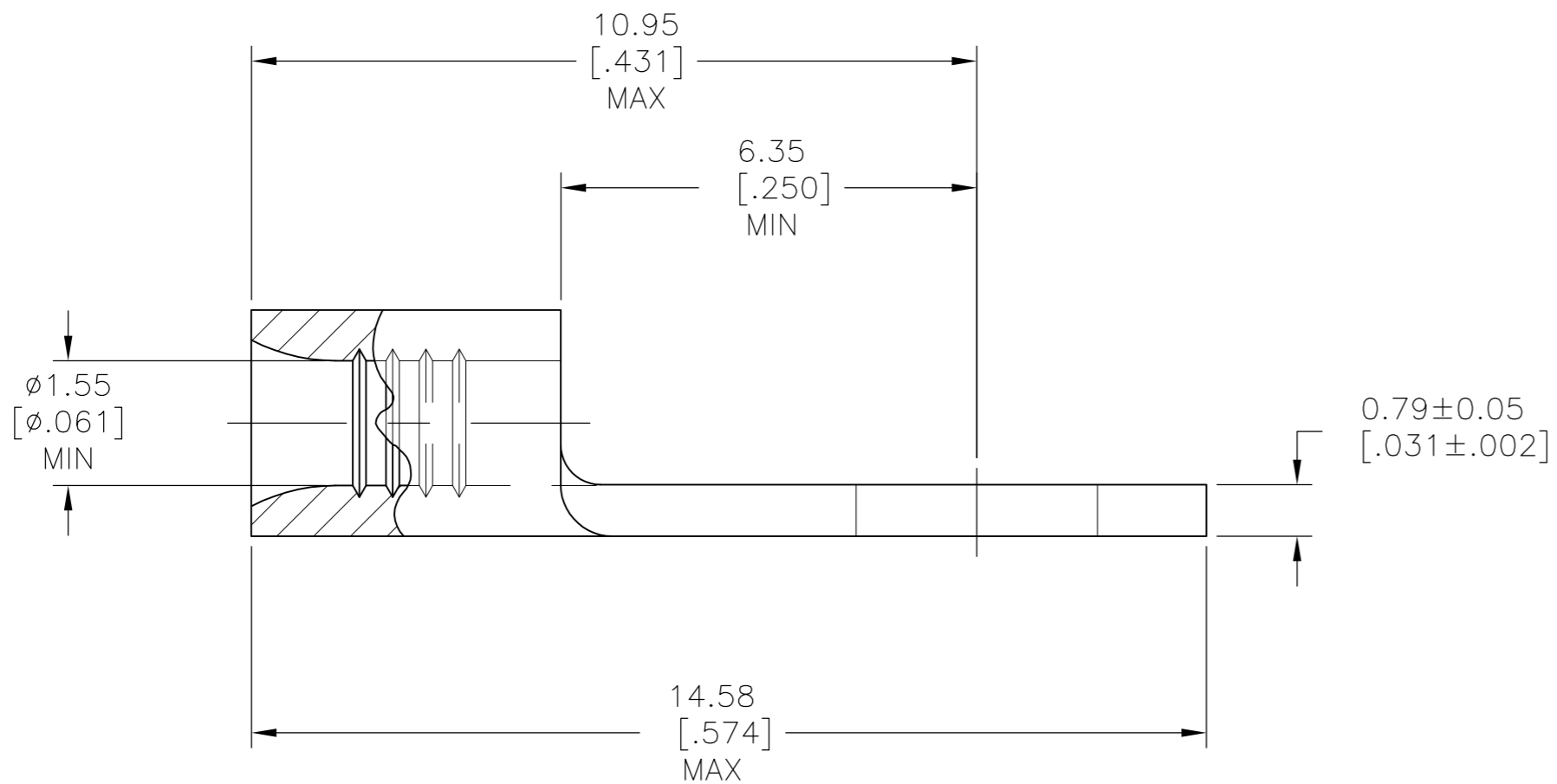
22-16 AWG
SOLID OR STRANDED

- 1
- STAMP AMP 22-18 APPROX AS SHOWN
-
- 22-16 TERMINALS ARE STAMPED 22-18 IN
-
- ACCORDANCE WITH MILITARY SPECIFICATION
-
- SAE AS7928 COMMERCIAL WIRE RANGE IS 22-16

2

3

4



2	-	649°C[1200°F]	100	LOOSE PIECE, BOX	8-321891-1
4	3	260°C[500°F]	1000	LOOSE PIECE	321891-1
2	-	649°C[1200°F]	1000	LOOSE PIECE	321891
FINISH		MAX OPERATING TEMP	QUANTITY	PACKAGE TYPE	PART NO

AMP INCORPORATED
CUSTOMER SERVICE SYSTEMS

FOR ADDITIONAL
PRODUCT INFORMATION OR
COPIES OF DRAWINGS
AND TECHNICAL DOCUMENTS

FOR APPLICATION
TOOLING INFORMATION

FOR ORDER ENTRY

PRODUCT INFORMATION CENTER
1-800-522-6752

TOOLING ASSISTANCE CENTER
1-800-722-1111

1-800-526-5142

MAX RECOMMENDED OPERATING
TEMPERATURE:
SEE TABLE

VOLTAGE RATING:
NOT APPLICABLE

WIRE CROSS SECTIONAL AREA RANGE:
0.26-1.65mm²[509-3,260] CIR MILS
SOLID OR STRANDED

THIS DRAWING IS A CONTROLLED DOCUMENT FOR
AMP INCORPORATED. IT IS SUBJECT TO CHANGE
AND THE CONTROLLING ENGINEERING ORGANIZATION
SHOULD BE CONTACTED FOR THE LATEST REVISION.

THIS DRAWING IS A CONTROLLED DOCUMENT.

DIMENSIONS:
mm [INCHES]

TOLERANCES UNLESS
OTHERWISE SPECIFIED:

0 PLC ± -
1 PLC ± -
2 PLC ± -
3 PLC ± -
4 PLC ± -
ANGLES ± -

MATERIAL
NICKEL PER
ASTM B-162
ANNEALED

FINISH
SEE TABLE

DWN
TA BRINKMAN
4-15-93

CHK
DA PATTERSON
4-15-93

APVD
DE MILLER
4-15-93

PRODUCT SPEC
APPLICATION SPEC

WEIGHT
-

CUSTOMER DRAWING

TE Connectivity

NAME
TERMINAL, RING TONGUE,
HIGH TEMPERATURE,
STRATO-THERM™

SIZE
A2

CAGE CODE
00779

DRAWING NO
C-321891

RESTRICTED TO
-

SCALE
10:1

SHEET
1 OF 1

REV
F1