



Chipsmall Limited consists of a professional team with an average of over 10 year of expertise in the distribution of electronic components. Based in Hongkong, we have already established firm and mutual-benefit business relationships with customers from,Europe,America and south Asia,supplying obsolete and hard-to-find components to meet their specific needs.

With the principle of "Quality Parts,Customers Priority,Honest Operation,and Considerate Service",our business mainly focus on the distribution of electronic components. Line cards we deal with include Microchip,ALPS,ROHM,Xilinx,Pulse,ON,Everlight and Freescale. Main products comprise IC,Modules,Potentiometer,IC Socket,Relay,Connector.Our parts cover such applications as commercial,industrial, and automotives areas.

We are looking forward to setting up business relationship with you and hope to provide you with the best service and solution. Let us make a better world for our industry!



## Contact us

Tel: +86-755-8981 8866 Fax: +86-755-8427 6832

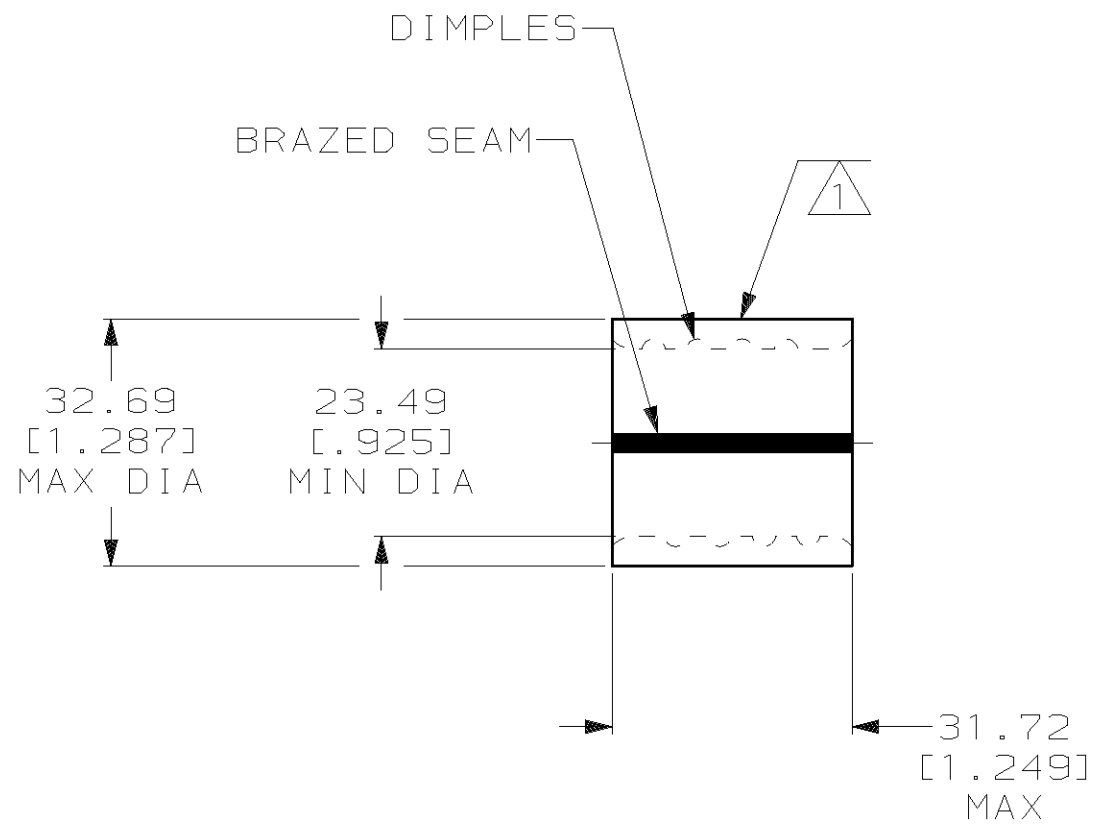
Email & Skype: info@chipsmall.com Web: www.chipsmall.com

Address: A1208, Overseas Decoration Building, #122 Zhenhua RD., Futian, Shenzhen, China



THIS DRAWING IS UNPUBLISHED. RELEASED FOR PUBLICATION, 19  
 © COPYRIGHT 19 BY AMP INCORPORATED. ALL INTERNATIONAL RIGHTS RESERVED.

| LOC | DIST | P | F | ZONE | LTR | DESCRIPTION          | DATE    | APPD  |
|-----|------|---|---|------|-----|----------------------|---------|-------|
| G   | 14   |   |   |      | D   | REV PER 063A-0435-02 | 30SEP02 | JR MS |



|                               |                            |
|-------------------------------|----------------------------|
| <b>AMP</b><br>WIRE RANGE      | <b>UL</b> E13288<br>Listed |
| 400 MCM<br>STRANDED           | 400 MCM<br>STRANDED        |
| <b>SA</b> LR7189<br>Certified | MILITARY P/N<br>AND CLASS  |
| 400 MCM<br>STRANDED           | NOT<br>APPLICABLE          |

- ① STAMP AMP W\* 400 MCM APPROX AS SHOWN
- 2 MATERIAL THK: 3.91<sup>±0.10</sup> [.154<sup>±.004</sup>]
- 3 STAMP FOR MANUFACTURING LOCATION OR CODE PERMISSIBLE.

|  |  |   |   |  |   |
|--|--|---|---|--|---|
| <b>AMP INCORPORATED<br/>CUSTOMER SERVICE SYSTEMS</b>                             |  | MAX RECOMMENDED OPERATING TEMPERATURE:<br>170°C MAX   |   | 322275   |   |
| FOR ADDITIONAL PRODUCT INFORMATION OR COPIES OF DRAWINGS AND TECHNICAL DOCUMENTS | PRODUCT INFORMATION CENTER<br>1-800-522-6752 | VOLTAGE RATING:<br>NOT APPLICABLE   | DO NOT SCALE PRINT. UNLESS SPECIFIED DIMENSIONS IN mm [INCHES] TOLERANCES ON:<br>2 PLC DEC ± 0.20 [.008]<br>3 PLC DEC ± -<br>ANGLES ± - | DR 5/6/93<br>DK SCHRUM<br>CHK 5/14/93<br>AJ KAUFMAN    | <b>AMP</b> AMP Incorporated<br>Harrisburg, PA 17105-3608    |
| FOR APPLICATION TOOLING INFORMATION  | TOOLING ASSISTANCE CENTER<br>1-800-722-1111  | CIRCULAR MIL AREA:<br>192.5-242.2mm <sup>2</sup> [380-478] MCM STRANDED   | MATERIAL<br>COPPER PER ASTM B-152 ANNEALED  | APPD 5/14/93<br>RE ROSER<br>APPD 5/14/93<br>CR RHOADS  |   |
| FOR ORDER ENTRY  | 1-800-526-5142                               | THIS DRAWING IS A CONTROLLED DOCUMENT FOR AMP INCORPORATED. IT IS SUBJECT TO CHANGE AND THE CONTROLLING ENGINEERING ORGANIZATION SHOULD BE CONTACTED FOR THE LATEST REVISION. | FINISH<br>TIN PLATE<br>0.00254 [.000100] MIN THK PER MIL-T-10727  | PRODUCT SPEC<br>-<br>APPLICATION SPEC<br>-<br>WEIGHT - | NAME<br>SPLICE, PARALLEL, SOLISTRAND,<br>WIRE SIZE: 400 MCM |
|  |  |   |   | SIZE<br><b>B</b>                                       | CAGE CODE<br>00779  |
|  |  |   |   | DRAWING NO<br><b>C-322277</b>                          |   |
|  |  |   |   | SCALE<br>1:1   | SHEET<br>1 OF 1   |