



Chipsmall Limited consists of a professional team with an average of over 10 year of expertise in the distribution of electronic components. Based in Hongkong, we have already established firm and mutual-benefit business relationships with customers from,Europe,America and south Asia,supplying obsolete and hard-to-find components to meet their specific needs.

With the principle of “Quality Parts,Customers Priority,Honest Operation,and Considerate Service”,our business mainly focus on the distribution of electronic components. Line cards we deal with include Microchip,ALPS,ROHM,Xilinx,Pulse,ON,Everlight and Freescale. Main products comprise IC,Modules,Potentiometer,IC Socket,Relay,Connector.Our parts cover such applications as commercial,industrial, and automotives areas.

We are looking forward to setting up business relationship with you and hope to provide you with the best service and solution. Let us make a better world for our industry!



Contact us

Tel: +86-755-8981 8866 Fax: +86-755-8427 6832

Email & Skype: info@chipsmall.com Web: www.chipsmall.com

Address: A1208, Overseas Decoration Building, #122 Zhenhua RD., Futian, Shenzhen, China



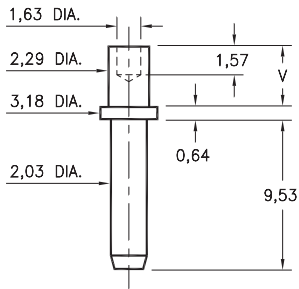
MALE PCB PINS

PRINTED CIRCUIT PINS

3231

3231-X-00-XX-00-00-08-0

Swage mount in 2,39 hole

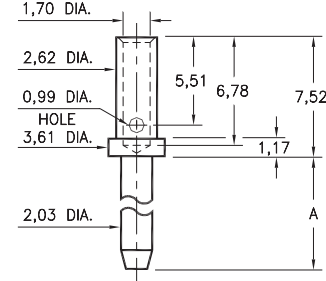


Basic Part Number	Board Thickness	Length V
3231-2	1,57	2,39
3231-3	2,39	3,18
3231-4	3,18	3,96

3609

3609-X-07-XX-00-00-08-0

Wire crimp termination. Accepts wire sizes 16 AWG Max. / 20 AWG Min.

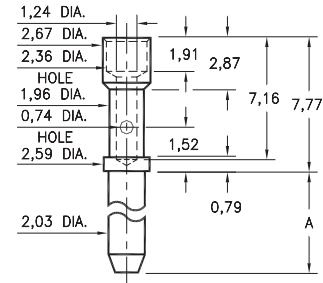


Basic Part Number	Pin Length A
3609-1	5,08
3609-2	9,53
3609-3	12,7

3601

3601-X-07-XX-00-00-08-0

Wire crimp termination. Accepts wire sizes 20 AWG Max. / 24 AWG Min.

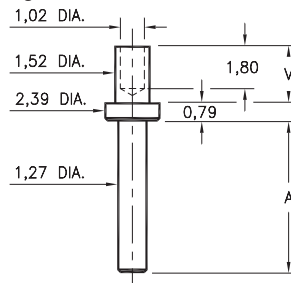


Basic Part Number	Pin Length A
3601-1	5,08
3601-2	9,53
3601-3	12,7

3133/3138/3152

31XX-X-00-XX-00-00-08-0

Specify board thickness
Swage mount in 1,63 hole



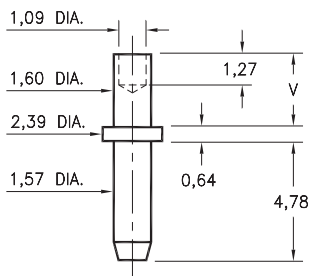
Basic Part Number	Pin Length A
3152-X	2,39
3133-X	5,56
3138-X	7,16

- X -	Board Thickness	Length V
1	0,79	1,60
2	1,57	2,39
3	2,39	3,18
4	3,18	3,96

3144

3144-X-00-XX-00-00-08-0

Swage mount in 1,70 hole

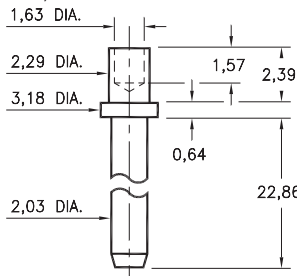


Basic Part Number	Board Thickness	Length V
3144-1	0,79	1,35
3144-2	1,57	2,13
3144-3	2,39	2,92

3233

3233-2-00-XX-00-00-08-0

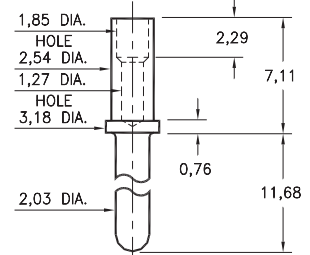
Swage mount in 2,39 hole
For a 1,57 thick board



0520

0520-0-00-XX-00-00-03-0

Annealed
Wire crimp termination. Accepts wire sizes 20 AWG Max. / 24 AWG Min.



SPECIFICATIONS:

Pin Material: Brass Alloy 360, 1/2 Hard
(Except swage pins which are annealed)

Dimensions: Millimeters

Tolerances On: Lengths: $\pm 0,13$
Diameters: $\pm 0,051$
Angles: $\pm 2^\circ$



ORDER CODE: XXXX - X - 0X - XX - 00 - 00 - XX - 0

BASIC PART #

SPECIFY PIN FINISH:

- 01 5,08µm TIN/LEAD OVER NICKEL
- ◆ 80 5,08µm TIN OVER NICKEL (RoHS)
- ◆ 15 0,25µm GOLD OVER NICKEL (RoHS)
- ◆ 21 0,51µm GOLD OVER NICKEL (RoHS)
- ◆ 34 1,27µm GOLD OVER NICKEL (RoHS)

