



Chipsmall Limited consists of a professional team with an average of over 10 year of expertise in the distribution of electronic components. Based in Hongkong, we have already established firm and mutual-benefit business relationships with customers from,Europe,America and south Asia,supplying obsolete and hard-to-find components to meet their specific needs.

With the principle of "Quality Parts,Customers Priority,Honest Operation,and Considerate Service",our business mainly focus on the distribution of electronic components. Line cards we deal with include Microchip,ALPS,ROHM,Xilinx,Pulse,ON,Everlight and Freescale. Main products comprise IC,Modules,Potentiometer,IC Socket,Relay,Connector.Our parts cover such applications as commercial,industrial, and automotives areas.

We are looking forward to setting up business relationship with you and hope to provide you with the best service and solution. Let us make a better world for our industry!



Contact us

Tel: +86-755-8981 8866 Fax: +86-755-8427 6832

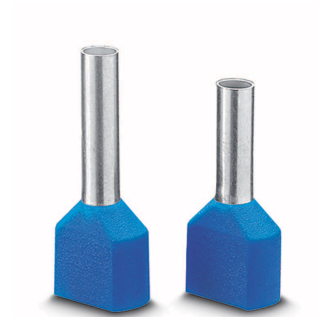
Email & Skype: info@chipsmall.com Web: www.chipsmall.com

Address: A1208, Overseas Decoration Building, #122 Zhenhua RD., Futian, Shenzhen, China



AI-TWIN...

Ferrules With Insulating Collar for Two Wires



CLIPLINE

Data Sheet
103091_en_01

© PHOENIX CONTACT 2011-07-05

1 Description

AI-TWIN... ferrules enable practical crimping of two wires in a ferrule. Chain bridges can be easily implemented using these ferrules.

Different versions of the individual TWIN ferrules are available for individual applications. The color coding of the individual cross sections corresponds to DIN 46228-4.



Make sure you always use the latest documentation.
It can be downloaded at www.phoenixcontact.net/catalog.



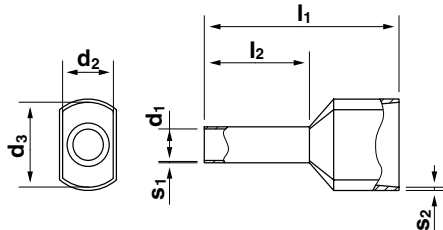
This data sheet is valid for all products listed on the following page:

2 Dimensions and Ordering Data

Ferrules With Insulating Collar for Two Wires

Cross Section	l_1	l_2	d_1	s_1	d_2	d_3	s_2	Color	Type	Order No.	Pcs./Pck.
2 x 0.5 mm ²	15.0 mm	8.0 mm	1.5 mm	0.15 mm	2.5 mm	4.6 mm	0.25 mm	White	AI-TWIN 2X 0,5 - 8 WH	3200933	100
2 x 0.75 mm ²	15.0 mm	8.0 mm	1.8 mm	0.15 mm	2.7 mm	5.2 mm	0.3 mm	Gray	AI-TWIN 2X 0,75- 8 GY	3200807	100
2 x 0.75 mm ²	15.0 mm	8.0 mm	1.8 mm	0.15 mm	2.7 mm	5.2 mm	0.3 mm	Blue ¹	AI-TWIN 2X 0,75- 8 BU	3240668	100
2 x 0.75 mm ²	17.0 mm	10.0 mm	1.8 mm	0.15 mm	2.7 mm	5.2 mm	0.3 mm	Gray	AI-TWIN 2X 0,75-10 GY	3200975	100
2 x 1 mm ²	15.0 mm	8.0 mm	2.05 mm	0.15 mm	3.4 mm	5.2 mm	0.35 mm	Red	AI-TWIN 2X 1 - 8 RD	3200810	100
2 x 1 mm ²	17.0 mm	10.0 mm	2.05 mm	0.15 mm	3.4 mm	5.2 mm	0.35 mm	Red	AI-TWIN 2X 1 -10 RD	3200988	100
2 x 1 mm ²	19.0 mm	12.0 mm	2.05 mm	0.15 mm	3.4 mm	5.2 mm	0.35 mm	Red	AI-TWIN 2X 1 -12 RD	3240679	100
2 x 1.5 mm ²	16.0 mm	8.0 mm	2.3 mm	0.15 mm	3.5 mm	6.4 mm	0.35 mm	Black	AI-TWIN 2X 1,5 - 8 BK	3200823	100
2 x 1.5 mm ²	18.0 mm	10.0 mm	2.3 mm	0.15 mm	3.5 mm	6.4 mm	0.35 mm	Black	AI-TWIN 2X 1,5 -10 BK	3201534	100
2 x 1.5 mm ²	20.0 mm	12.0 mm	2.3 mm	0.15 mm	3.5 mm	6.4 mm	0.35 mm	Black	AI-TWIN 2X 1,5 -12 BK	3200991	100
2 x 2.5 mm ²	18.5 mm	10.0 mm	2.9 mm	0.2 mm	4.1 mm	7.5 mm	0.35 mm	Blue	AI-TWIN 2X 2,5 -10 BU	3200836	100
2 x 2.5 mm ²	18.5 mm	10.0 mm	2.9 mm	0.2 mm	4.1 mm	7.5 mm	0.35 mm	Gray ¹	AI-TWIN 2X 2,5 -10 GY	3240669	100
2 x 2.5 mm ²	21.5 mm	13.0 mm	2.9 mm	0.2 mm	4.1 mm	7.5 mm	0.35 mm	Blue	AI-TWIN 2X 2,5 -13 BU	3200878	100
2 x 4 mm ²	23.0 mm	12.0 mm	3.8 mm	0.2 mm	4.8 mm	8.5 mm	0.4 mm	Gray	AI-TWIN 2X 4 -12 GY	3201000	100
2 x 6 mm ²	25.0 mm	14.0 mm	4.6 mm	0.2 mm	5.8 mm	9.6 mm	0.5 mm	Yellow	AI-TWIN 2X 6 -14 YE	3201013	100
2 x 10 mm ²	26.0 mm	14.0 mm	6.5 mm	0.2 mm	7.0 mm	12.6 mm	0.6 mm	Red	AI-TWIN 2X10 -14 RD	3201026	100
2 x 16 mm ²	31.0 mm	16.0 mm	8.5 mm	0.2 mm	8.8 mm	16.6 mm	0.6 mm	Blue	AI-TWIN 2X16 -16 BU	3202847	50

¹ Color code according to NF C 63-023



- l_1 = Total length
- l_2 = Sleeve length
- d_1 = Inside diameter of sleeve
- s_1 = Wall thickness of sleeve
- d_2 = Inside diameter of insulating collar
- d_3 = Inside diameter of insulating collar
- s_2 = Wall thickness of insulating collar

Figure 1 Dimensions (tolerances according to DIN 46228-4)

Assortment Boxes

Description	Type	Order No.	Pcs./Pck.
Assortment box, rectangular, blue Comprises: 50 pcs. each of AI-TWIN 2X 0,5-8 WH, AI-TWIN 2X 0,75-8 GY, AI-TWIN 2X 1-8 RD, AI-TWIN 2X 1,5-8 BK, 25 pcs. of AI-TWIN 2X 2,5-10 BU	AI-TWIN SORTI BOX BU	3202986	1
Assortment box, rectangular, gray Comprises: 20 pcs. of AI-TWIN 2X 4-12 GY, 10 pcs. each of AI-TWIN 2X 6-14 YE, AI-TWIN 2X10-14 RD	AI-TWIN SORTI BOX GY	3202999	1
Assortment box, round, clear Comprises: 50 pcs. each of AI-TWIN 2 x 0,75-8 GY, AI-TWIN 2 x 1-8 RD, AI-TWIN 2 x 1,5-8 BK, AI-TWIN 2 x 2,5-10 BU	AI-TWIN-SORTI-BOX I	3200946	1
Assortment box, round, clear Comprises: 30 pcs. each of AI-TWIN 2 x 1,5-8 BK, AI-TWIN 2 x 2,5-10 BU, AI-TWIN 2 x 4-12 GY, 10 pcs of AI-TWIN 2 x 6-14 YE	AI-TWIN-SORTI-BOX II	3201039	1

3 Technical Data

General Data

Material

Collar

Polypropylene PP (UL94 HB), heat resistant up to 105°C

Sleeve

E-CU, tin-plated surface