



Chipsmall Limited consists of a professional team with an average of over 10 year of expertise in the distribution of electronic components. Based in Hongkong, we have already established firm and mutual-benefit business relationships with customers from,Europe,America and south Asia,supplying obsolete and hard-to-find components to meet their specific needs.

With the principle of "Quality Parts,Customers Priority,Honest Operation,and Considerate Service",our business mainly focus on the distribution of electronic components. Line cards we deal with include Microchip,ALPS,ROHM,Xilinx,Pulse,ON,Everlight and Freescale. Main products comprise IC,Modules,Potentiometer,IC Socket,Relay,Connector.Our parts cover such applications as commercial,industrial, and automotives areas.

We are looking forward to setting up business relationship with you and hope to provide you with the best service and solution. Let us make a better world for our industry!



Contact us

Tel: +86-755-8981 8866 Fax: +86-755-8427 6832

Email & Skype: info@chipsmall.com Web: www.chipsmall.com

Address: A1208, Overseas Decoration Building, #122 Zhenhua RD., Futian, Shenzhen, China



THIS DRAWING IS UNPUBLISHED.

RELEASED FOR PUBLICATION

LOC

DIST

REVISIONS

© COPYRIGHT - BY TYCO ELECTRONICS CORPORATION.

ALL INTERNATIONAL RIGHTS RESERVED.

G

02

P

LTR

DESCRIPTION

DATE

DWN

APVD

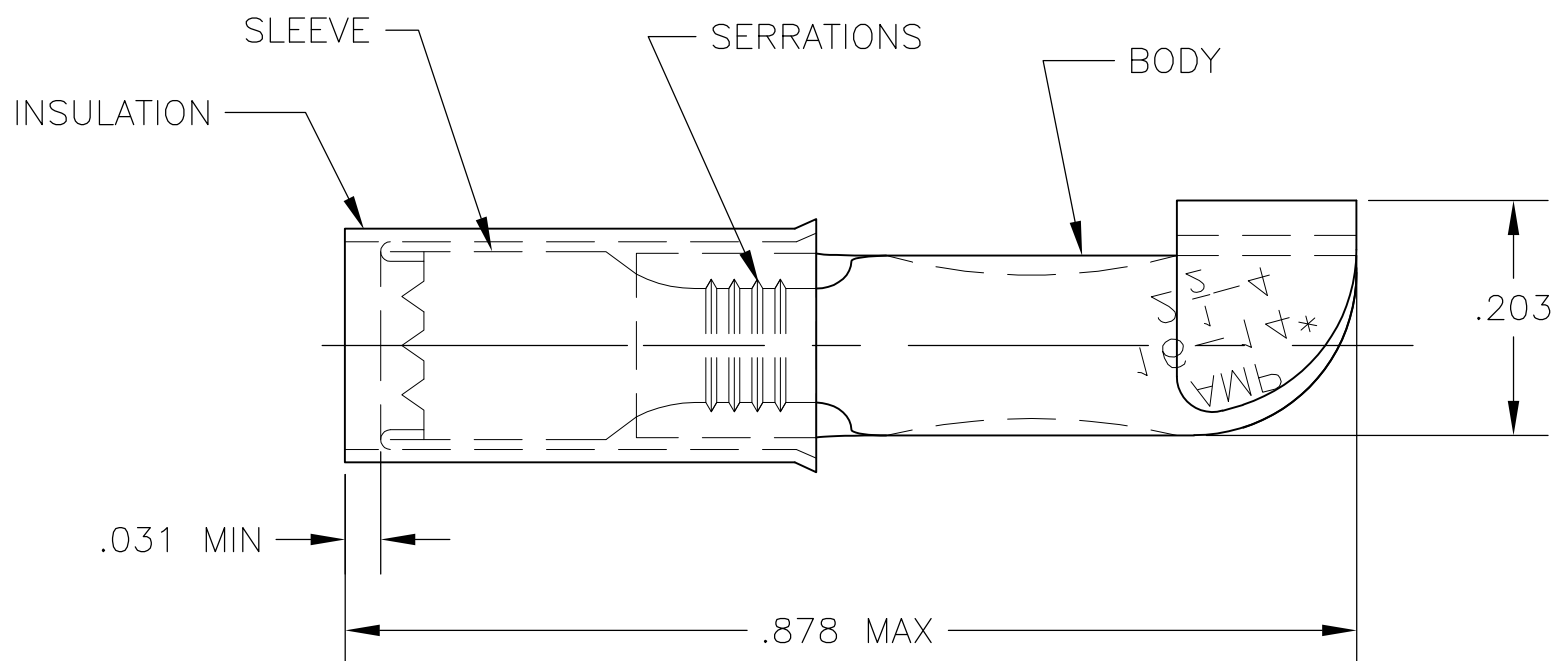
D1

REDRAWN PER ECR 09-005983

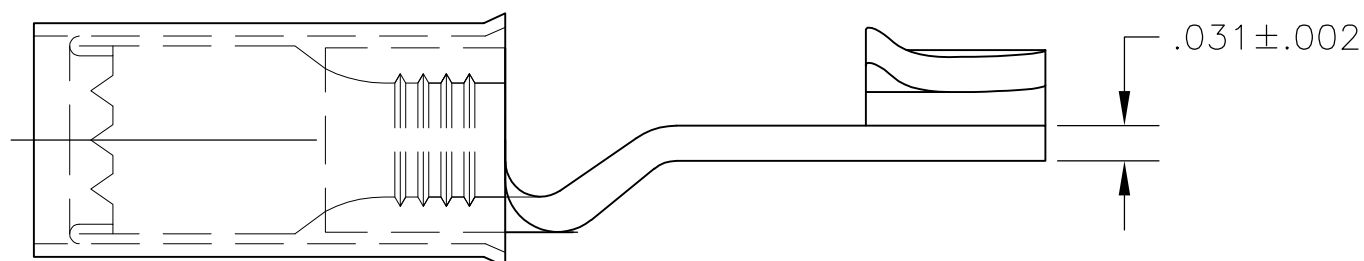
13MAR09

JR

TM



- 1 FOREIGN PRODUCTION ONLY.
- 2 FOR .105 TO .150 WIRE INSULATION DIA.



OBSOLETE

32447 ON TAPE	INSULATION: PVC, COLOR BLUE SLEEVE: COPPER PER ASTM B152 BODY: COPPER PER ASTM B152 TIN PLATE PER ASTM B545	2-32447-1
WIRE TERMINAL		1 32447
DESCRIPTION	MATERIAL	PART NO

THIS DRAWING IS A CONTROLLED DOCUMENT.		DWN jr_ruth 13MAR09	Tyco Electronics Corporation Harrisburg, PA 17105-3608	
DIMENSIONS: INCHES	TOLERANCES UNLESS OTHERWISE SPECIFIED:	CHK TOM MICHIELUTTI 13MAR09	NAME TERMINAL, PIDG KNIFE DISONNECT, WIRE SIZE 16-14 AWG	
	0 PLC ± -	APVD TOM MICHIELUTTI 13MAR09	PRODUCT SPEC	
	1 PLC ± -		APPLICATION SPEC	
	2 PLC ± -		SIZE	CAGE CODE
	3 PLC ± .008		DRAWING NO	
	4 PLC ± -		RESTRICTED TO	
	ANGLES ± 5'		-	
MATERIAL SEE TABLE	FINISH SEE TABLE	WEIGHT -	A3 00779 C-32447	
CUSTOMER DRAWING			SCALE 8:1	SHEET 1 OF 1
			REV D1	